



1D & 2D



Mobile Reading



Visual Feedback



CMOS



Dual Interface



IP65



Infrared



EasySet



Warranty 2 Years



FM3080 Hind
Stationary Scanners

Features

Snappy on-screen barcode capture.

The FM3080 Hind is armed with Newland's sixth-generation of UIMG® technology. This CPU-based scanner excels at reading on-screen barcodes that contain a large amount of data.

Instant visual feedback.

With up to 4 color options available, the white scanning window of the FM3080 Hind can light up each scan. It can be programmed for different barcodes, a successful read, or to match your company brand.

Small form factor.

Dimensions of 78.7 x 67.7 x 47.5mm make the FM3080 Hind the smallest of the FM30 series. As a result, it takes up minimal space in a kiosk or at the POS.

IR and light sensors.

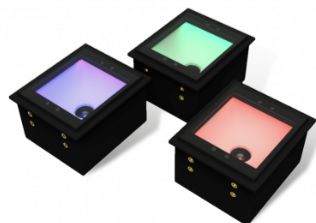
In order to achieve higher productivity, the FM3080 Hind has a combination of an IR sensor and light sensor. This combination creates improved sensitivity in activating the scanner to scan the presented barcode.

IP65 sealing.

The FM3080 Hind possesses a high IP-rating of IP65, making it resistant to water and dust.

Anti Reflection

The updated FM3080 Hind has a coating on the underside of the glass to reduce the reflection and glare, making reading barcodes from screens, even snappier and user friendly.



Suggested industries



Entertainment



Finance



Hospitality



Retail



Transportation

FM3080 Hind Technical specifications

Performance

Image Sensor	800x800 CMOS
Illumination	White LED
Depth of Field EAN 13 (13mil)	0-190mm
Depth of Field Code 39 (20mil)	40-210mm
Depth of Field Code 128 (10mil)	0-185mm
Depth of Field QR (20mil)	0-130mm
Minimal Print Contrast	25%
Scan Angle Roll	360°
Scan Angle Pitch	±40°
Scan Angle Pitch	±40°
Scan Angle Skew	±40°
Field of View Horizontal	74°
Field of View Vertical	74°
Scan Modes	Sense Mode, Continuous Mode
Scan Window	50mm x 50mm

Data Capture

1D	All major 1D symbologies, including EAN-8, EAN-13, UPC-A, UPC-E, ISSN, ISBN, Codabar, Standard 2 of 5, Code 128, Code93, ITF-6, ITF-14, GS1 Databar, MSI-Plessey, Code 39, Interleaved 2 of 5, Industrial 2 of 5, Matrix 2 of 5, Code 11, Plessey.
2D	All major 2D symbologies, including PDF417, Data Matrix, QR Code, Micro QR Code, Aztec.

Physical

Dimensions (mm)	78.7(W)x67.7(D)x47.5(H)mm
Weight	132g
Interfaces	RS-232, USB
Notifications	Beep, LED indicator
Input Voltage	5VDC±5%
Current @ 5VDC Operating	250mA (typical), 266mA (max.)
Power Consumption	869mW (typical)

Environmental

Operating Temperature	-20°C to 60°C (-4°F to 140°F)
Storage Temperature	-40°C to 70°C (-40°F to 158°F)
Humidity	5% to 95% (non-condensing)
Electro Static Discharge (ESD)	±15 kV (air discharge), ±8 kV (direct discharge)
IP Rating	IP65

Software

Configuration Tools	EasySet
---------------------	---------

Newland EMEA HQ

+31 (0) 345 87 00 33
info@newland-id.com
newland-id.com

Feel free to contact us or a partner near you

visit newland-id.com/partners

Specifications are subject to change without notice

© Newland EMEA 2022, all rights reserved

FM3080 Hind Technical specifications

Certifications

Hardware	FCC Part15 Class B, CE EMC Class B
----------	------------------------------------

Warranty

Standard	2 years
----------	---------

Newland EMEA HQ

+31 (0) 345 87 00 33
info@newland-id.com
newland-id.com

Feel free to contact us or a partner near you

visit newland-id.com/partners

Specifications are subject to change without notice

© Newland EMEA 2022, all rights reserved

