

CA-CF460-680

Capture offers an assortment of high quality cash drawers.

They include bill trays with metal clips, flexible coin trays and front access slot for checks and credit card receipts etc.

All features a 3-position lock, Micro Switch and both 12 and 24 Volt operation.

SPECIFICATIONS

Type

Flip top.

Materials

Metal and steel.

Bill Tray

Six compartments.

Coin Tray

Two-row tray with eight compartment.

Media Slot

Front access slot for fx checs and credit card receipts.

Lock

2-position Key Lock.

Micro Switch

Open by driver signal to the solenoid.

I/O Interface

12V/24V for RJ11/RJ12.

Durability

One million operations.

Color

Silver.

DIMENSIONS

Drawer Size (WxHxD): 460 x 100 x 170 mm without feet.

Packaging Size (WxHxD): 505 x 140 x 220 mm.

Weight (Net): 5.1 kgs.

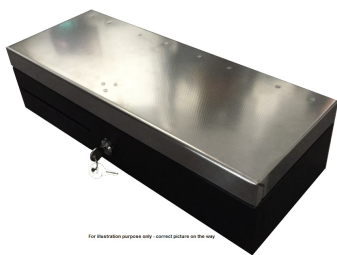
Weight (Gross): 6.1 kgs.

ITEM

Item No: CA-CF460-680S

EAN: 5706998551498

QTY in carton: 1 pc.



EET Group A/S
We accept no liability for printing errors.
Specifications are subject to change without notice.
Document ver. 2

capture