

Customer Name: \_\_\_\_\_

Fabric Number: \_\_\_\_\_

## SHIRT ORDER FORM

### SHIRT COLLAR:



Standard



Standard Short



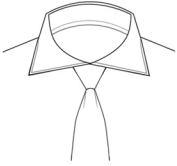
Spread



Short Spread



Button Down



Wide Spread



Rounded



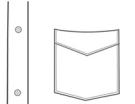
Hidden Button

### SHIRT POCKET:

None



Square



Chevron

### MONOGRAM:

Block | Script

### SHIRT CUFF:



1 Notch



2 Notch



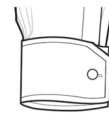
1 Round



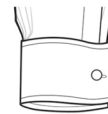
2 Square



Convertible



French Notch



French Square



French Countour

\* Don't forget to take posture pics of client

#### MEASUREMENTS

CHEST	
FRONT CHEST	
BACK	
STOMACH (WAIST)	
SEAT	
SHOULDERS POINT TO POINT	
R. SLEEVE LENGTH	
L. SLEEVE LENGTH	
JACKET LENGTH	
ARMHOLE	
BICEP	
FOREARM	
WRIST	
NECK	
<b>ADDITIONAL MEASUREMENTS</b>	
SHIRT LENGTH	
BACK JACKET LENGTH	
OVERARM	
FRONT SHOULDER	
NAPE TO WAIST	
FRONT WAIST LENGTH	

### SHIRT PLACKET:



Plain Front

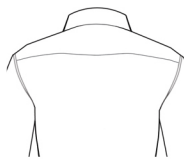


Placket



Hidden Placket

### REAR PLEATS:



Plain



Center Box Pleat



Side Pleat

**SPECIAL INFORMATION / FIT**

# Shirt

## Additional Options

### SHIRT COLLOR:

More Options:

*Hidden Button | Tuxedo | Narrow | Tall | Standard W/Bar |  
Rounded W/Bar | Mandarin Shirt | Snap Tab | Short Cutaway |  
Wide Cutaway*

Collar Details:

*Specify Point Length \_\_\_\_\_ | Specify Point Width \_\_\_\_\_ |  
Tipped Collar (Fabric) \_\_\_\_\_ | Stack Button Color \_\_\_\_\_ |  
Stiffer Collar | Double Fold Collar | Soft Collar |  
Permanent Collar Stays | Edge Stitched Collar & Cuff*

### SHIRT CUFF:

More Options:

*French No Fold | French Reverse | Portofino | French Coutour*

Cuff Details:

*No Sleeve Vent Button | Fold Up Corner | Specify Cuff Height \_\_\_\_\_ |  
Wears Watch on Left Wrist | Wears Watch on Right Wrist | Double Fold Cuff*

### SHIRT POCKET:

More Options:

*Round | Button Flap | Hexagon | Square W/Pen | Square W/Pleat*

Shirt Button Stance:

*Standard 2.5" | Low First Button 3.5" | Double Button Stance*

### SHIRT PLACKET:

More Options:

*Pleated Tuxedo Front | Plain W/Tux Holes*

### SHIRT REAR PLEATS:

More Options:

*No Pleats W/Darts*

Additional Customizations:

Yoke Style:

*Plain | Split | Western | Shoulder Epaulets*

Bottom Cut:

*Standard Swoop | Round Swoop | Straight Cut | Notch/Vent*

Gusset Style:

*Standard Triangle | No Gusset | Pentagon Gusset | Triangle Under*

### SHIRT MONOGRAM:

Additional Customizations:

Shirt Fabric Contrast:

*Contrast Collar | Collar & Cuff | Collar & Cuff & Placket | Collar Inlay |  
Collar & Cuff Inlay | Collar & Cuff & Placket Inlay |  
Contrast Fabric #: \_\_\_\_\_*

Shirt Button Color (Standard):

Accent Buttonholes:

*Slanted Buttons | Accent Buttonhole Format: All One Color /  
Accent Cuff Only / Bottom Placket Only / Collar Only / Cuff & Sleeve Vent /  
Collar & Cuff & Sleeve Vent*

Accent Buttonhole Color: \_\_\_\_\_

Button Attaching Thread: \_\_\_\_\_