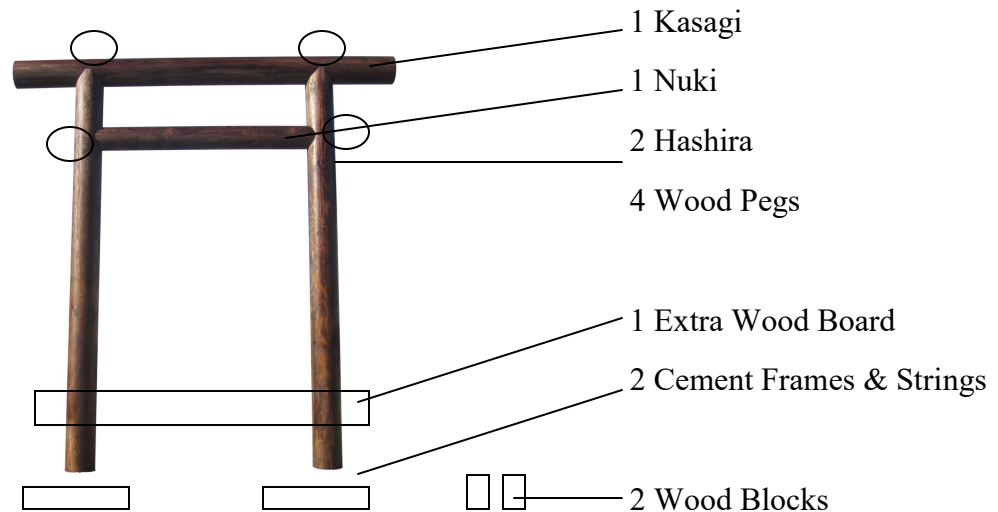




SamsGazebos® Japanese Shinmei Style Torii Gate

Assembly Instructions & Installation Guide



Thank you for purchasing a Japanese Myojin Style Torii Gate from SamsGazebos. Assembling it may take 45 minutes and an hour to set with cement. Minimum two persons are recommended to assemble this item for your safety. Please work on a clean level floor for the best result. Remove the wrapping material, prepare the tools and material, and lay out the parts before assembly in order to save you time and effort. Each kit is custom built with pilot holes for your convenience. Wash hands after handling.

Tools / things you need:

- ◇ Cordless Screw Driver or Philips Screw Driver(+)
- ◇ 2 Socket Wrenches
- ◇ Hammer
- ◇ Level
- ◇ Ladder
- ◇ Square
- ◇ Knife
- ◇ Pencil / Pen
- ◇ Measure Tape
- ◇ Shovel
- ◇ Minimum 4 bags of ready mix cement (Get extra bags of cement if you have large holes.)
- ◇ Wheelbarrow or container to mix cement
- ◇ Water
- ◇ Nitrile Gloves (included)
- ◇ 2 Strings (included)
- ◇ Hardware is included: four 1/2" x 10" lag bolts with washers and four screws (2-1/2")

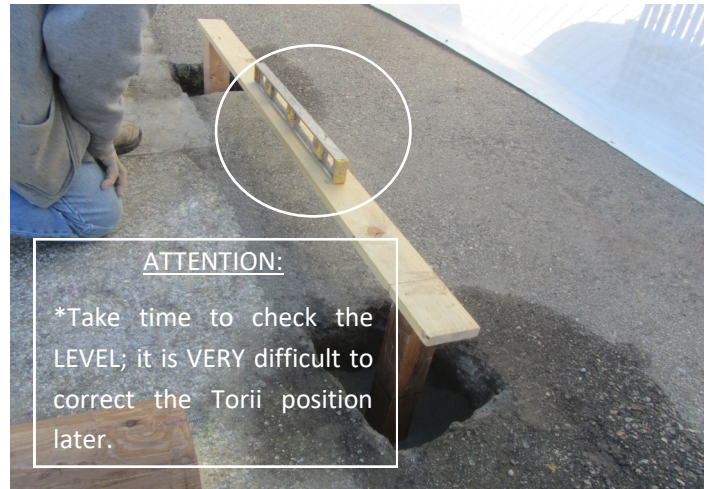


HANDLE With CARE

Round and Heavy.



1. Making two holes for Torii poles. Remember that you need to set minimum 6" with cement.(See marks on posts.)



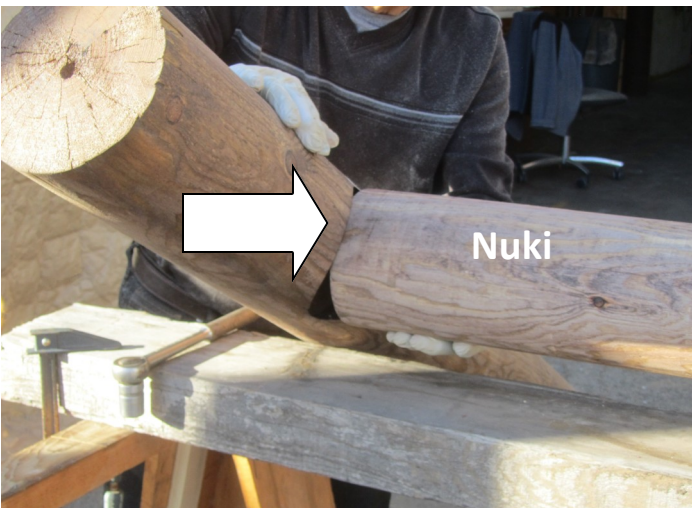
2. Place two wood blocks in the holes. Put a temporary wood board at top to check the level; it will facilitate the Torii installation. Remove the wood blocks.



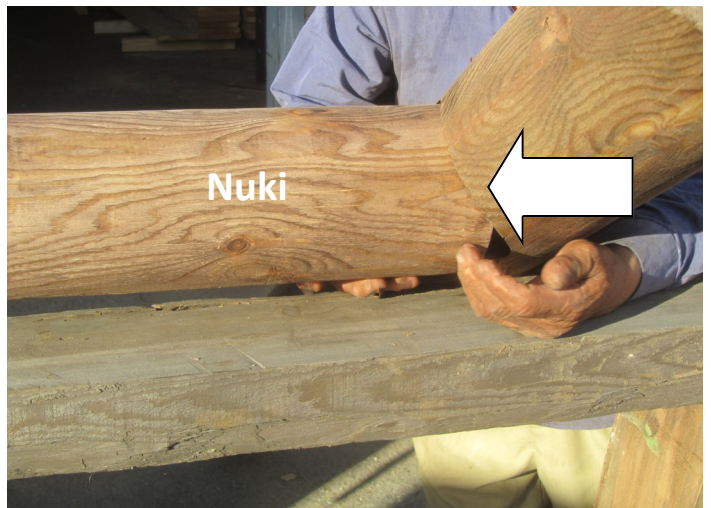
3. Place two Hashira poles with holes inside. Alternatively, you can do it on the ground.



4. The holes are fragile. Handle with care.



5. GENTLY Insert a NUKI through pole holes. Nuki is the smallest pole without holes. Do it one pole (HASHIRA) at a time.



6. Do the same on the other side.



7. Fasten the Nuki and the HASHIRA poles with lag bolts from a side. Leave loose until later.



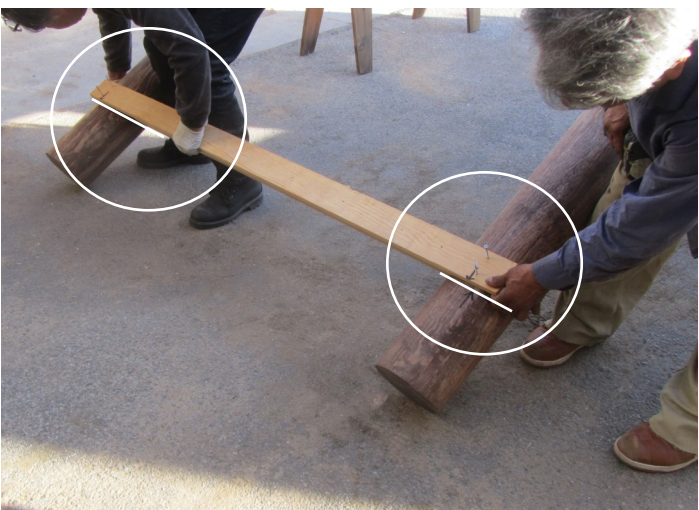
8. Do the same on the other side. Leave loose until later.



9. A view from the other side.



10. Insert square frames and tie them to the NUKI. Skip this step if you prefer not to use them.



11. Place a temporary wood board where marked.



12. Be sure to align the marked lines.



13. Fasten the temporary wood board to the Hashira poles with two screws each.



14. Do the same on the other Hashira pole.



15. Gently put Kasagi from top.



16. Handle with care.



17. Fasten the KASAGI and the Hashira poles with lag bolts.



18. Two lag bolts from top.



19. Fasten wood pegs to cover the holes with nails. Match the number or alphabet.



20. Fasten the loose lag bolts from sides (steps 7 and 8).



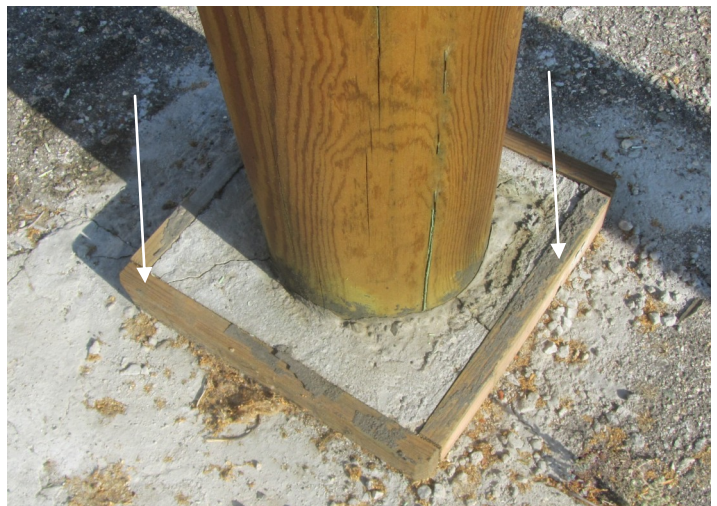
21. Fasten wood pegs to cover the holes with nails. Match the number or alphabet.



22. Pour mixed concrete into the holes and insert the poles. Check the level and adjust the pole positions if it is not level.



23. Check the level from front or back. Adjust the pole positions if not level.



24. Untie the strings to pull down the cement frames, place them at the bottom, and finish the cement work. Remove the wood board when the cement is cured.

RECOMMENDED FINISHES



This product is treated with oil-based semi-transparent brown wood preservative. The color of the wood preservative is not permanent, will show trace of green from Copper and become lighter over time. Copper-Green® BROWN wood preservative is available at your local Home Depot® for a darker, rustic look.

Finishing with a deck stain is highly recommended; it is a matt finish will look same for 5 to 10 years.

Behr® Premium paint is primer and paint in a can, available at Home Depot® if you prefer gross or semi-gross finish.

Thank You for choosing **SamsGazebos®**.

Customer service: 1(800)376-7267 or (310)523-3778

Another web site is just launched, www.SamsGazebo.com Craftsman Style Garden Structures.

We appreciate your business and your fabulous reviews :)



CALIFORNIA - Proposition 65 Warning

California's Proposition 65, also called the Safe Drinking Water and Toxic Enforcement Act is a Right to know law regarding Californians being able to make informed decisions to protect themselves from chemicals known to cause cancer, birth defects, or other reproductive harm. The law states that Californians have a right to know if a chemical may cause "more than 1 extra case of cancer in 100,000 people over a 70-year lifetime".

Products and fasteners on both SamsGazebo.com and SamsGazebos.com can expose you to chemicals such as nickel, chromium, lead, or saw dust, which are known to the State of California to cause cancer and birth defects or other reproductive harm. May be harmful if eaten or chewed. May generate dust containing these chemicals. Wash hands after handling. Keep out of reach of children. May contain these chemicals in a smaller amount than Proposition 65's concern, or not at all, however we have chosen to issue this warning on all of our products as an act of caution and because our customers have the right to know. For more information go to: www.P65Warnings.ca.gov



SamsGazebos®

Japanese Shinmei Style Torii Gate

Care and Use

info@samsgazebos.com

1(800) 376-7267

Torii CARE AND USE

This product is made for a gate. This is not a structure to climb.
Do not leave it without permanent cement installation.

This product is treated with oil-based semi-transparent brown wood preservative. The color of the wood preservative is not permanent, will show trace of green from Copper, and turn to light brown over time. Copper-Green® BROWN wood preservative is available at your local Home Depot® if you prefer a rustic look.

Finishing with a deck stain is highly recommended; it is a matt finish but will look same for 10 to 15 years. Behr® offers exterior latex paint that comes primer and paint in one can, available at Home Depot®.

Thank You for choosing **SamsGazebos®** products.

Another web site is just launched, www.SamsGazebo.com.

We appreciate your business.



SamsGazebos®

Japanese Shinmei Style Torii Gate

Parts List

info@samsgazebos.com

1(800) 376-7267

