



DAWNER PRINCE ELECTRONICS

www.dawnerprince.com

STARLA™ OWNER'S MANUAL

Congratulations! You have just purchased STARLA effect pedal from Dawner Prince Electronics!

It is the smallest size, all-feature tap tempo tremolo effect pedal available nowadays!

Being fully professionally designed and handmade in combination of Surface Mount and Through Hole technology, with audiophile components, pure analog audio signal path and true bypass switching system incorporated, makes Starla a top quality guitar effect.

VOLUME (potentiometer) 1

controls the output volume level. You can adjust your STARLA to attenuate or boost your signal easily. Unity gain is around 11 o'clock.

WAVEFORM (potentiometer) 2

provides eight different waveforms including RANDOM waveform, for extreme versatility.

SPEED (potentiometer) 3

controls the speed of the tremolo effect. This control is affected by the 1/2/3 switch (5). If the switch is set at the higher rate position, SPEED knobs sweep will change as well.

DEPTH (potentiometer) 4

controls the depth of the tremolo effect. On a minimum settings the Starla can be used as a volume boost, you can bring up the depth enough for slight shimmers in your signal, or all out depth, for maximum effect.

1/3/2 - STEP SWITCH (switch) 5

is a tap tempo multiplier switch. Since the Starla can operate at much higher speeds than one could tap out, this control takes your tap tempo and multiplies it. 1 position represents the same tempo that you tap out, 2 position represents double speed tempo and 3 position represents triplet. Once the tempo has been tapped in, step switch can function as an in-time rate control.

DUTY (trim potentiometer) 6

modifies the duty cycle of all waveforms excepting Random one. At 12 o'clock waveform will represent the shape on the Waveform control (2), but to either side this shape will slant, providing numerous new sounds.

EXT.TAP (RCA connector) 7

serves two functions: Sync IN or Sync OUT function, depends on how the internal jumper (15) is set (remove the backplate to reach the jumper). In Sync OUT mode, it outputs LFO signal and in Sync IN mode, it accepts control voltage signal or a remote tap foot switch to synchronize Starla's LFO.

TRUE BYPASS SWITCHING SYSTEM with STATUS LED (footswitch) 8, 10

switches effect ON and OFF. When in ON mode, status LED will glow white.

TAP / RESYNC SWITCH with TAP LED (footswitch) 9, 11

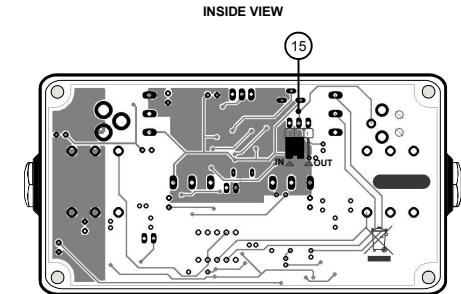
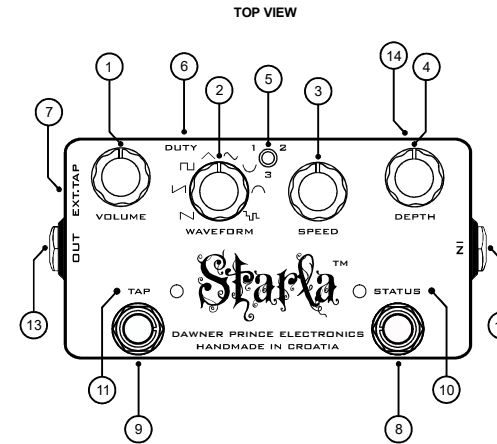
is used to set the speed of the tremolo effect by tapping twice or to resync the tempo by tapping once. TAP LED glows red in the rate of the Starla's LFO.

IN and OUT (jack) 12, 13

IN jack (12) takes signal from guitar or previous effect pedal in chain. OUT jack (13) delivers signal to the amplifier or to the next effect pedal in the chain.

POWER SUPPLY (jack) 14

Unit operates at voltages from 9VDC up to 18VDC. Use regulated adapter 9VDC-18VDC/100mA. Starla has built in advanced reverse polarity power protection circuitry.



SPECIFICATIONS:

Input impedance :	470 KOhm
Output impedance:	1 KOhm
Power supply:	Adapter 9V-18V DC
Power supply connector type:	Barrel, 5.5mm/2.1mm, Center Negative
Current draw (max.):	~ 30 mA
Length:	112 mm / 4.42 inch
Width (W/O jacks):	60 mm / 2.37 inch
Height (W/O potentiometers):	31 mm / 1.22 inch
Weight (W/O packaging):	0.26 kg / 0.57 lb
Weight (with packaging):	0.38 kg / 0.83 lb
Standard colour:	Purple Stardust

WARRANTY:

Dawner Prince Electronics warrant this product to be free from defects in materials and workmanship under normal use and service. Dawner Prince Electronics liability under this warranty is limited to repairing or replacing defective materials that show evidence of defect, provided the product is returned to Dawner Prince Electronics WITH RETURN AUTHORIZATION, where all parts and labor will be covered up to a period of two (2) years. A Return Authorization number can be obtained from Dawner Prince Electronics by e-mail. Return transportation costs for the service within the warranty period are paid by the owner of goods.

This warranty does not cover loss or theft of products, and excludes failures caused by misuse, mechanical damage, liquid damage of any kind, device falling, unauthorized modification, shock surge in electricity supply, lightning, improper storage and natural disasters. Dawner Prince Electronics assumes no liability for any damages resulting from the use of this product. Using the product, the customer accepts all conditions set forth hereby. Dawner Prince Electronics reserves the right to make changes in design, or make additions to, or improvements upon this product without incurring any obligation to install the same on products previously manufactured.

NOTE: The information contained in this manual is subject to change at any time without notification. Some information contained in this manual may also be inaccurate due to undocumented changes in the product after this version of the manual was completed. The information in this version of the owner's manual supersedes all previous versions.



If you want to dispose of this product, do not mix it with general household waste. There is a separate collection system for used electronic products in accordance with legislation that requires proper treatment, recovery, and recycling.

Private households in the 25 member states of the EU, in Switzerland and Norway may return their used electronic product free of charge to designated collection facilities or to a retailer (if you purchase similar new one).

For countries not mentioned above, please contact your local authorities for a correct method of disposal.

By doing so you will ensure that your disposed product undergoes the necessary treatment, recovery and recycling and thus prevent potential negative effects on the environment and human health.

WARNING

For your protection, read the following:

Important Safety Instructions

1. Read these instructions.
2. Keep these instructions.
3. Heed all warnings.
4. Do not use this apparatus near water.
5. Clean only with dry cloth.
6. Install in accordance with manufacturer's instructions.
7. Do not install near any heat sources such as radiators, heat registers, stoves, or other apparatus (including amplifiers) that produce heat.
8. Protect the power cord from being walked on or pinched particularly at plugs, convenience receptacles, and the point where they exit from the apparatus.
9. Unplug this apparatus during lightning storms or when unused for long periods of time.
10. No user serviceable parts inside. Refer all servicing to qualified service personnel. Servicing is required when the apparatus has been damaged in any way, such as power-supply cord or plug is damaged, liquid has been spilled or objects have fallen into the apparatus, the apparatus has been exposed to rain or moisture, does not operate normally, or has been dropped.
11. **WARNING:** To reduce the risk of fire or electric shock, do not expose this apparatus to rain or moisture.
12. Refer to labels on the unit, including bottom cover, or other markings and pertinent information.