



# DAWNER PRINCE ELECTRONICS

www.dawnerprince.com

## PULSE™ OWNER'S MANUAL

Congratulations! You have just purchased a PULSE effect pedal from Dawner Prince Electronics. Pulse is an open cabinet revolving speaker emulator, inspired by Pink Floyd's legendary rotary speaker Doppola and Gibson® Maestro Rover RO-1.

It is professionally designed and handmade with audiophile quality components for superb sound quality and long-term durability.

### **SLOW SPEED** (potentiometer) 1

controls the speed of the speaker rotation when the unit is in SLOW mode. Minimum setting yields the slowest speed of 0.4 rps (revolutions per second) and maximum setting yields the fastest speed of 4 rps.

### **FAST SPEED** (potentiometer) 2

controls the speed of the speaker rotation when the unit is in FAST mode. Minimum setting yields the slowest speed of 4 rps and maximum setting yields the fastest speed of 8 rps.

### **DISTANCE** (potentiometer) 3

controls the distance between virtual microphones and the revolving speaker cabinet. Minimum setting is the furthest distance and maximum setting is the closest distance.

### **INERTIA** (potentiometer) 4

controls the amount of time it takes for the speaker to accelerate from SLOW to FAST and to decelerate from FAST to SLOW mode.

### **MIX** (potentiometer) 5

controls the amount of dry input signal in the output mixer. Minimum setting is 100% dry, maximum setting is 100% effect. 12:00 position yields 50% - 50% effect/dry mix.

### **ON/OFF TRUE BYPASS SWITCHING SYSTEM with STATUS LED** (footswitch) 6

switches the effect ON and OFF. When in ON mode, status LED will glow yellow.

### **FAST/SLOW SWITCHING SYSTEM with STATUS LEDs** (footswitch) 7

switches between SLOW and FAST speaker rotation. Yellow LED indicates SLOW mode and blue LED indicates FAST mode.

### **TRS STEREO IN** (jack) 8

accepts either mono or TRS stereo signals selectable via internal jumper. However, for the rotary effect only the TIP IN (right) is used. In bypass mode both TIP (right) and RING (left) inputs are routed to their corresponding outputs in stereo. The pedal ships preset in mono mode.

### **OUT R MONO, OUT L** (jack) 9, 10

PULSE provides a stereo output by two virtual microphones placed on each side of the speaker cabinet. Using solely OUT R - MONO output engages a single virtual microphone in front of the speaker cabinet.

### **EXT IN** (jack) 11

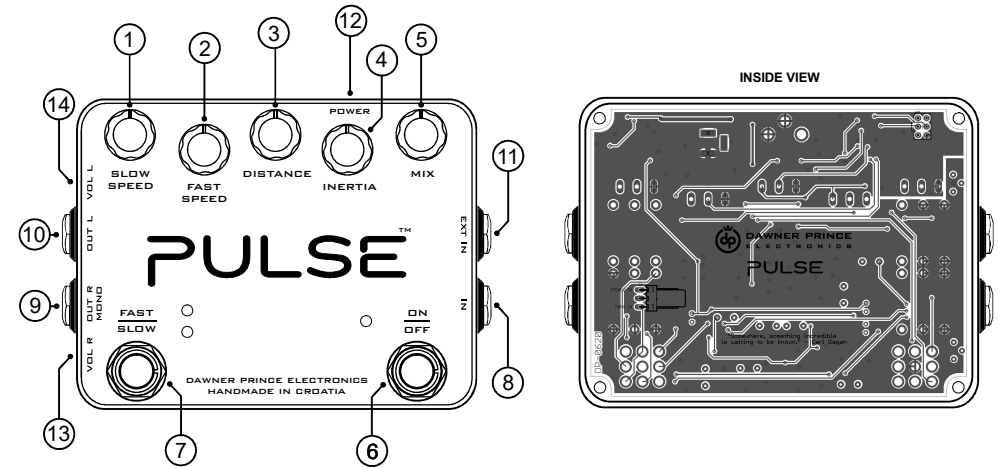
accepts expression pedal or remote switch connection for external speed control. To use an expression pedal, plug it in, set it to minimum (HEEL) position and adjust SLOW SPEED potentiometer to desired value. Now set the pedal to its maximum (TOE) position and adjust FAST SPEED potentiometer to desired value. Finally, move the pedal back and forth to hear the results. To use the remote switch, connect SPDT (ON/ON) switch wired TIP - center lug, RING - outer lug, SLEEVE - second outer lug. Onboard SLOW/FAST switch (7) is automatically disengaged when expression pedal or remote switch is connected. For expression pedal we suggest using Roland® EV-5 but it will operate with almost any type of pedal available.

### **POWER** (DC jack) 12

Unit operates at voltage of 9V DC and draws ~70mA. Always use regulated 9V DC/100mA power supply with center negative tip. Unregulated power supplies and/or higher voltages may damage the unit, voiding the warranty.

### **VOL R, VOL L** (trimmer potentiometer) 13, 14

control the levels of the output signals on OUT R (9) and OUT L (10) channels. Unity gain is at 12:00 position. When using Pulse in mono out mode, make sure to set both trimmers at the same level to maintain realistic effect.



### **SPECIFICATIONS:**

Input impedance:	3.3 MΩ
Output impedance (RIGHT):	3.3 kΩ
Output impedance (LEFT):	3.3 kΩ
DAC / ADC resolution:	24 bits
Power supply:	adapter 9V DC
Power supply connector type:	barrel, 5.5mm / 2.1mm, center-negative
Current draw:	~ 70 mA
Length:	91 mm / 3.58 inch
Width (W/O jacks):	116 mm / 4.17 inch
Height (W/O potentiometers):	34 mm / 1.33 inch
Weight (W/O packaging):	0.452 kg / 0.99 lb
Weight (with packaging):	0.541 kg / 1.19 lb
Standard colour:	black grain / gunpowder grey

### **WARRANTY:**

Dawner Prince Electronics warrant this product to be free from defects in materials and workmanship under normal use and service. Dawner Prince Electronics liability under this warranty is limited to repairing or replacing defective materials that show evidence of defect, provided the product is returned to Dawner Prince Electronics WITH RETURN AUTHORIZATION, where all parts and labor will be covered up to a period of two (2) years. A Return Authorization number can be obtained from Dawner Prince Electronics by e-mail. Return transportation costs for the service within the warranty period are paid by the owner of goods.

This warranty does not cover loss or theft of products, and excludes failures caused by misuse, mechanical damage, liquid damage of any kind, device falling, unauthorized modification, shock surge in electricity supply, lightning, improper storage and natural disasters. Dawner Prince Electronics assumes no liability for any damages resulting from the use of this product. Using the product, the customer accepts all conditions set forth hereby. Dawner Prince Electronics reserves the right to make changes in design, or make additions to, or improvements upon this product without incurring any obligation to install the same on products previously manufactured.

**NOTE:** The information contained in this manual is subject to change at any time without notification. Some information contained in this manual may also be inaccurate due to undocumented changes in the product after this version of the manual was completed. The information in this version of the owner's manual supersedes all previous versions.

*\*Roland® and Gibson® are registered trademarks of their respective owners*

Dawner Prince Electronics Ltd  
Zmijavci, Croatia  
info@dawnerprince.com  
www.dawnerprince.com



If you want to dispose of this product, do not mix it with general household waste. There is a separate collection system for used electronic products in accordance with legislation that requires proper treatment, recovery, and recycling.

Private households in the 25 member states of the EU, in Switzerland and Norway may return their used electronic product free of charge to designated collection facilities or to a retailer (if you purchase similar new one).

For countries not mentioned above, please contact your local authorities for a correct method of disposal.

By doing so you will ensure that your disposed product undergoes the necessary treatment, recovery and recycling and thus prevent potential negative effects on the environment and human health.

## **WARNING**

### **For your protection, read the following:**

Important Safety Instructions

1. Read these instructions.
2. Keep these instructions.
3. Heed all warnings.
4. Do not use this apparatus near water.
5. Clean only with dry cloth.
6. Install in accordance with manufacturer's instructions.
7. Do not install near any heat sources such as radiators, heat registers, stoves, or other apparatus (including amplifiers) that produce heat.
8. Protect the power cord from being walked on or pinched particularly at plugs, convenience receptacles, and the point where they exit from the apparatus.
9. Unplug this apparatus during lightning storms or when unused for long periods of time.
10. No user serviceable parts inside. Refer all servicing to qualified service personnel. Servicing is required when the apparatus has been damaged in any way, such as power-supply cord or plug is damaged, liquid has been spilled or objects have fallen into the apparatus, the apparatus has been exposed to rain or moisture, does not operate normally, or has been dropped.
11. **WARNING:** To reduce the risk of fire or electric shock, do not expose this apparatus to rain or moisture.
12. Refer to labels on the unit, including bottom cover, or other markings and pertinent information.