



DAWNER PRINCE ELECTRONICS

www.dawnerprince.com

DIKTATOR MKII™ OWNER'S MANUAL

Congratulations! You have just purchased a DIKTATOR MKII effect pedal from Dawner Prince Electronics! It is a unique 2-channel combination of clean, transparent preamp / booster and flexible tube amp-style overdrive. The Diktator MKII pays homage to its predecessor, the original Diktator unit, which we proudly designed a decade ago. We embarked on a complete redesign journey, deconstructing the original design while maintaining its tonal character. Diktator MKII is professionally designed and handmade with audiophile-grade components for superb sound quality and long-term durability.

DETONATOR channel:

LEVEL (potentiometer) 1
controls your Diktator MKII's output volume with precision. From silent to unity gain or crank it up for a fuller tone.

BASS (potentiometer) 2
controls the amount of low frequencies coming out of the drive section. Active tone control allows you to easily sweep between fatter or more tighter tones.

TREBLE (potentiometer) 3
controls the amount of higher frequencies which affects the overall character of your sound. You can easily cut or boost the upper frequencies as it is also an active tone control.

DRIVE (potentiometer) 4
controls the amount of overdrive in the signal and can take your tone from mild breakup through warm overdrive, all the way to creamy saturation with tons of sustain.

HARD / SOFT (switch) 5
toggles between different types of clipping diodes within the drive section. Hard mode provides higher headroom and sparkle, while Soft mode delivers a compressed, creamy tone with a more vintage feel.

DARK / BRIGHT (switch) 6
activates or deactivates the post-drive output filter, which adjusts the tone in a manner similar to the presence control found in the power amp section of a tube amplifier. This feature guarantees seamless compatibility with both bright-voiced and darker guitar amplifiers.

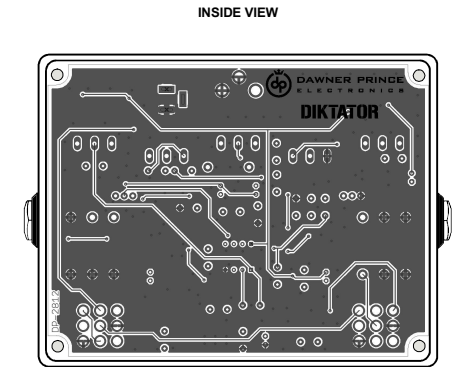
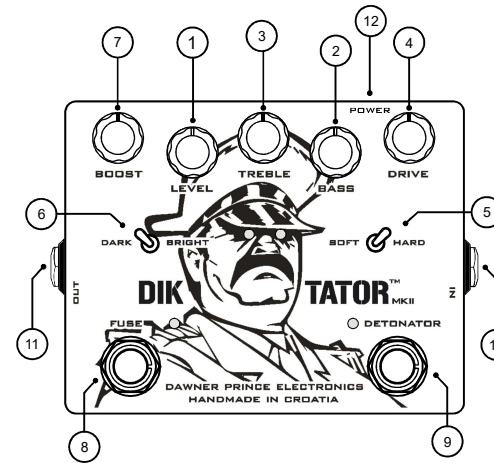
FUSE channel:

BOOST (potentiometer) 7
governs the gain of the preamp, enabling you to finely tune your level from unity gain up to a fairly hot signal, reaching up to approximately 30dB of boost.

TRUE BYPASS SWITCHING SYSTEM with STATUS LED (footswitch) 8, 9
switches effect ON and OFF. When in ON mode, status LED will glow orange in DETONATOR channel and red in FUSE channel.

IN and OUT (jack) 10, 11
IN jack (10) takes signal from guitar or previous effect pedal in chain. OUT jack (11) delivers signal to the amplifier or to the next effect pedal in the chain.

POWER SUPPLY (DC jack) 12
Unit operates at voltages from 9VDC up to 18VDC. Use regulated adapter 9VDC-18VDC/50mA.



SPECIFICATIONS:

Input impedance (DETONATOR):	3.3 Mohm
Input impedance (FUSE):	1 Mohm
Output impedance (DETONATOR):	10 Kohm
Output impedance (FUSE):	5 Kohm
Power supply:	Adapter 9V-18V DC
Power supply connector type:	Barrel, 5.5mm/2.1mm, center negative
Current draw (typical at 9VDC):	~ 15 mA
Length:	91 mm / 3.58 inch
Width (W/O jacks):	116 mm / 4.17 inch
Height (W/O potentiometers):	34 mm / 1.33 inch
Weight (W/O packaging):	0.390 kg / 0.85 lb
Weight (with packaging):	0.480 kg / 1.05 lb
Standard colour:	OBD green

WARRANTY:

Dawner Prince Electronics warrant this product to be free from defects in materials and workmanship under normal use and service. Dawner Prince Electronics liability under this warranty is limited to repairing or replacing defective materials that show evidence of defect, provided the product is returned to Dawner Prince Electronics WITH RETURN AUTHORIZATION, where all parts and labor will be covered up to a period of two (2) years. A Return Authorization number can be obtained from Dawner Prince Electronics by e-mail. Return transportation costs for the service within the warranty period are paid by the owner of goods.

This warranty does not cover loss or theft of products, and excludes failures caused by misuse, mechanical damage, liquid damage of any kind, device falling, unauthorized modification, shock surge in electricity supply, lightning, improper storage and natural disasters. Dawner Prince Electronics assumes no liability for any damages resulting from the use of this product. Using the product, the customer accepts all conditions set forth hereby. Dawner Prince Electronics reserves the right to make changes in design, or make additions to, or improvements upon this product without incurring any obligation to install the same on products previously manufactured.

NOTE: The information contained in this manual is subject to change at any time without notification. Some information contained in this manual may also be inaccurate due to undocumented changes in the product after this version of the manual was completed. The information in this version of the owner's manual supersedes all previous versions.



If you want to dispose of this product, do not mix it with general household waste. There is a separate collection system for used electronic products in accordance with legislation that requires proper treatment, recovery, and recycling.

Private households in the 25 member states of the EU, in Switzerland and Norway may return their used electronic product free of charge to designated collection facilities or to a retailer (if you purchase similar new one).

For countries not mentioned above, please contact your local authorities for a correct method of disposal.

By doing so you will ensure that your disposed product undergoes the necessary treatment, recovery and recycling and thus prevent potential negative effects on the environment and human health.

WARNING

For your protection, read the following:

Important Safety Instructions

1. Read these instructions.
2. Keep these instructions.
3. Heed all warnings.
4. Do not use this apparatus near water.
5. Clean only with dry cloth.
6. Install in accordance with manufacturer's instructions.
7. Do not install near any heat sources such as radiators, heat registers, stoves, or other apparatus (including amplifiers) that produce heat.
8. Protect the power cord from being walked on or pinched particularly at plugs, convenience receptacles, and the point where they exit from the apparatus.
9. Unplug this apparatus during lightning storms or when unused for long periods of time.
10. No user serviceable parts inside. Refer all servicing to qualified service personnel. Servicing is required when the apparatus has been damaged in any way, such as power-supply cord or plug is damaged, liquid has been spilled or objects have fallen into the apparatus, the apparatus has been exposed to rain or moisture, does not operate normally, or has been dropped.
11. **WARNING:** To reduce the risk of fire or electric shock, do not expose this apparatus to rain or moisture.
12. Refer to labels on the unit, including bottom cover, or other markings and pertinent information.