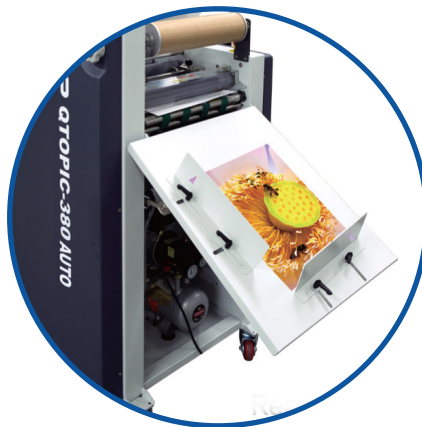


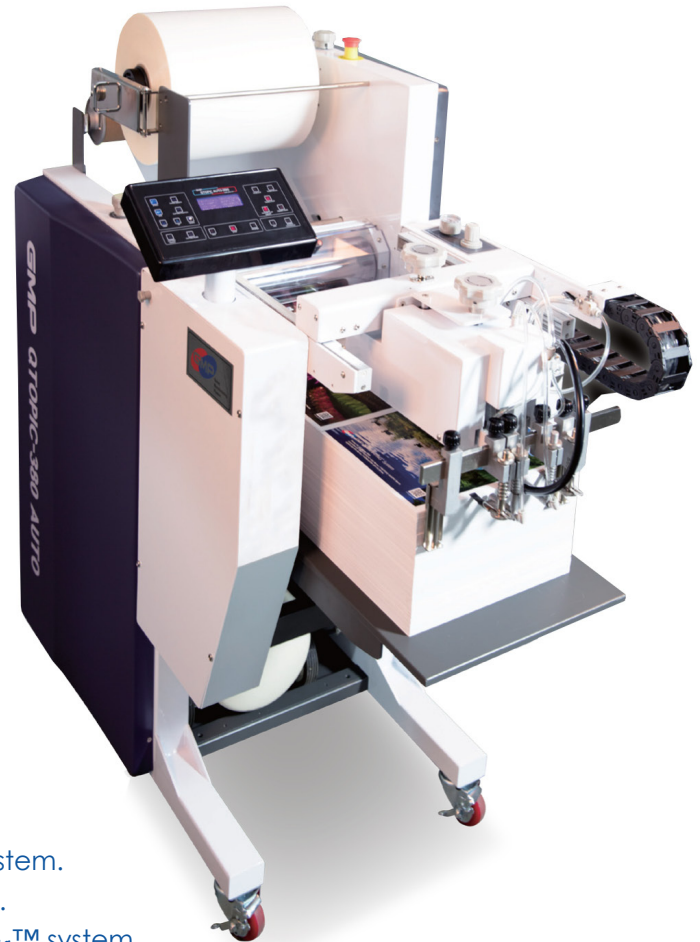
QTOPIC-380 AUTO

AUTOMATIC THERMAL LAMINATOR

- Ideal for:
 - Polynex (BOPP base) Film
 - Nylonex (Nylon base) Film
 - Perfex (PET base) Film
- Sleeking™ Foils:
 - Gloss
 - Matt
 - Holographic
 - Metallic

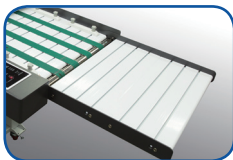


Rear view



FEATURES

- Automatic paper feed with patented gap control system.
- Integrated air compressor with reduced noise output.
- Strengthened laminating pressure for bond and Sleeking™ system.
- Ergonomic touch screen.
- Cantilever design for easy film loading.
- Integrated tension control and de-curling device.
- Optional patented embossing rollers.
- Automatic burst cutting system.
- Laminating 10m/per minute.
- Up to SRA3 (380mm x 500mm).



ATTACHABLE EXTENSION FEEDING TABLE (OPTIONAL)



TOP FILM PERFORATOR (OPTIONAL)



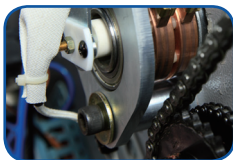
CAPACITIVE TOUCH SCREEN



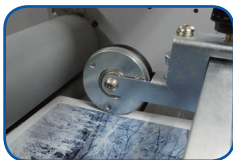
DECURLING DEVICE



AUTOMATIC FEEDING GAP CONTROL DEVICE



THERMO-COUPLE INSERTED FOR TEMP. SENSING



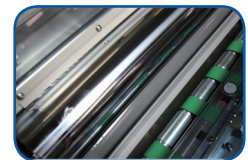
IN-LINE PERFORATOR



CANTILEVER TYPE FILM SHAFT



AIR COMPRESSOR

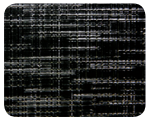


HIGH GLOSSY CHROME ROLLER

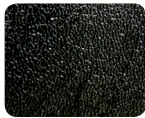
APPLICATIONS

- Posters
- Pop-up Signs
- Menus
- Book covers
- Photograph Albums
- Name cards
- Gift certificates
- Greetings Cards
- Yearbooks
- Calendars
- Labels (Micronex Lamination)
- Magazines and inner pages
- Packaging
- Leaflets
- Business Brochures
- Business Cards
- Wedding Invites
- Party Invites

BASIC PATTERNS OF EMBOSING ROLLER (OPTIONAL)



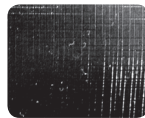
FINE
TEXTURE



LEATHER
TEXTURE



SPARKLE
TEXTURE



SILKY
TEXTURE



LINEN
TEXTURE

Model Name	QTOPIC-380 AUTO
Dimensions (WxLxH)	720 x 1700 x 1350mm
Laminating Speed	1.5m/min ~ 10m/min
Paper Size (WxL)	Max: 380 x 500mm (optional 1200mm) Min: 180 x 250mm
Laminating Films	<ul style="list-style-type: none"> • Single Side <ul style="list-style-type: none"> - Polynex (20 ~ 43mic) - Perfex (25mic) - Nylonex (27 ~ 44mic) • Micronex (6 ~ 10mic) <ul style="list-style-type: none"> - Gloss/Matt/Holographic
<i>Sleeking™</i>	Gloss / Matt / Holographic / Metallic
Substrate Thickness	120 ~ 350g/m ²
Front roller diameter (Top)	high gloss chrome Ø 100
Front roller diameter (Bottom)	silicon Ø 80
Rear roller diameter	silicon Ø 55
Power Requirements	AC 220 ~ 240V, 50/60Hz, 12A
Power Consumption	2.8kw
Warm-up Time	5 minutes
Heating System	Infrared Heater
Laminating Temperature	Max. 150°C
Temperature Control	Capacitive Touch Screen
Speed Control	Capacitive Touch Screen
Display System	LCD Panel
Pressure Control	Pneumatic cylinder
Film Core Size	77mm (3") / Dual - 58mm, 50mm
Air Compressor	2 HP, 19L
Vacuum Pump	250W, 120L / min
Temperature Sensing Method	Thermo-couple inserted in the roller shell

GMP reserves the right to change specifications without prior notice.