

# EXCELTOPIC-380

## DESKTOP POD LAMINATOR

- Ideal for:
  - BOPP Lamination
  - Digital BOPP Lamination
  - PET Lamination
  - Nylon Lamination
  - Sleeking™ Foils:
- Usage of eco-friendly GMP Thermalami® film
- Perfect solution for all digital prints.



## FEATURES

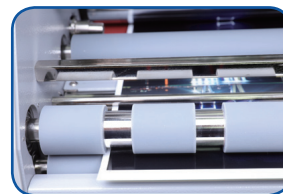
- Ideal entry level machine for Sleeking (gloss / matt / holographic / metallic).
- Semi-automatic paper feed with patented gap control system.
- No air compressor to reduce noise output.
- Strengthened laminating pressure for bond and Sleeking system.
- Integrated tension control and de-curling device.
- Optional patented embossing rollers.
- Automatic burst cutting system.
- Integrated perforation solution.
- Hot roller designed to avoid silvering.
- Lamination of up to 1.5m guillotine ready sheets/per minute.
- Up to SRA3 (380mm x 500mm)



Using household power supply (220 ~ 240V)

## APPLICATIONS

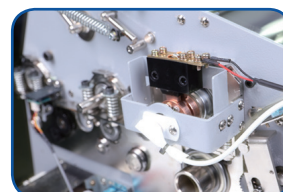
- Posters
- Pop-up signs
- Menus
- Book covers
- Photographs
- Photo albums
- Business cards
- Gift certificates
- Labels (with Micronex Label films)
- Greetings cards



BURSTING ROLLER



TOP AND IN-LINE PERFORATOR

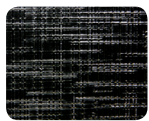


TEMPERATURE SENSOR INSIDE ROLLER



REMOVABLE FEEDING TABLE

## BASIC PATTERNS OF EMBOSSING ROLLER (OPTIONAL)



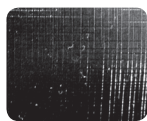
FINE  
TEXTURE



LEATHER  
TEXTURE



SPARKLE  
TEXTURE



SILKY  
TEXTURE



LINEN  
TEXTURE

| Model Name                     | EXCELTOPIC-380  |
|--------------------------------|---|
| Dimensions (WxLxH)             | 700 x 630 x 560mm   |
| Laminating Speed               | 1.5m/min ~ 8m/min   |
| Paper Size (WxL)               | Max: 380 x 500mm<br>(optional 1200mm)<br>Min: 180 x 210mm   |
| Laminating Films               | <ul style="list-style-type: none"> <li>• Single Side               <ul style="list-style-type: none"> <li>- Polynex (20 ~ 43mic)</li> <li>- Perfex (25mic)</li> <li>- Nylonex (27 ~ 44mic)</li> </ul> </li> <li>• Micronex (6 ~ 10mic)               <ul style="list-style-type: none"> <li>- Gloss/Matt/Holographic</li> </ul> </li> </ul> |
| <i>Sleeking™</i>               | Gloss / Matt / Holographic / Metallic   |
| Substrate Thickness            | 120 ~ 350g/m <sup>2</sup>   |
| Front Roller Diameter (Top)    | high gloss chrome Ø 80  |
| Front Roller Diameter (Bottom) | silicon Ø 80  |
| Rear Roller Diameter           | silicon Ø 40  |
| Power Requirements             | AC 220 ~ 240V, 50/60Hz, 12A   |
| Power Consumption              | 2.8kw   |
| Warm-up Time                   | 5 minutes   |
| Heating System                 | Infrared Heater   |
| Laminating Temperature         | Max. 150°C  |
| Temperature Control            | Jog dial  |
| Speed Control                  | Jog dial  |
| Display System                 | LCD Panel   |
| Roller Pressure                | Manual  |
| Film Core Size                 | 77mm (3")   |
| Temperature Sensing Method     | Thermo-couple inserted in the roller shell  |

GMP reserves the right to change specifications without prior notice.