



# ALPHA TT-1

SETUP AND OPERATING INSTRUCTIONS

## **Welcome to the Silence family!**

You now own a turntable built with same care and precision as a fine musical instrument.

### **Crafted for Audiophiles, Designed for Collectors.**

Every piece is made by hand, tuned by ear, and tested with precision. From the resonance balanced Baltic Birch plinth to diamond cut aluminum and carbon fiber arm, Silence is designed to reveal music — not color it.

This manual will help you get started. For everything else, trust your ears. Music starts with Silence.

Marko, Founder of Silence

## Important Safety Instructions

Read and understand this entire manual before using this product.  
Keep these instructions for future reference.

1. Read these instructions carefully
2. Keep these instructions for later reference
3. Heed all warnings
4. Follow all instructions
5. Do not use the device near water
6. Clean only with a dry cloth
7. Do not block any ventilation openings. Always ensure a sufficient ventilation. Install in accordance with the manufacturer's instructions
8. Do not install near any heat sources such as radiators, heat registers, stoves, or other devices (including amplifiers) that produce or radiate heat
9. Do not defeat the safety purpose of the polarized or grounding-type plug. A polarized plug has two blades, one being wider than the other. A grounding-type plug has two blades and a third grounding prong. The wide blade or the third prong is provided for your safety. If the provided plug does not fit into your outlet, consult an electrician for replacement of the obsolete outlet
10. Protect the power cord from being walked on or pinched or otherwise damaged, particularly at plugs, convenience receptacles, and the point where they exit from the device
11. Only use attachments/accessories that have been specified by the manufacturer
12. Use only with a cart, stand, tripod, bracket or table specified by the manufacturer, or sold along with the device. When a cart is used, use caution when moving the cart/device combination to avoid injury from tip-over
13. Unplug this device during lightning storms or when not being used for longer periods of time
14. Refer all servicing to qualified service personnel only. Servicing is required when the device has been damaged in any way, such as: Power-supply cord or plug has been damaged, liquid has been spilled or entered the device, the device has been exposed to rain or moisture, or objects have fallen into the device, the device does not work normally, or it has been dropped
15. Where a mains plug is used as the disconnect device, the disconnect device shall remain readily operable
16. Please keep the unit in a good ventilation environment at any time.

### Caution:

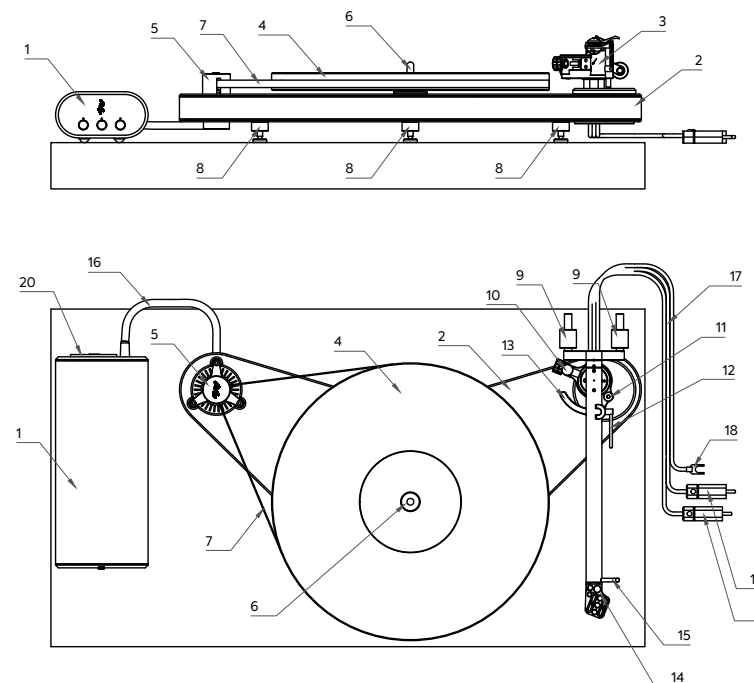
- Marking and rating plate was located under enclosure of the apparatus
- When the mains plug or appliance coupler is used as disconnect device, it shall remain readily operable
- The ventilation should not be impeded by covering the ventilation openings with items, such as newspapers, tablecloths, curtains, etc.; Minimum distances 10cm around the apparatus for sufficient ventilation
- No naked flame sources, such as lighted candles, should be placed on the apparatus
- Use the apparatus only in a moderate climate.

## Items in this package

Before throwing away any packaging materials, please check thoroughly and make sure you find the following items that come along with this package:

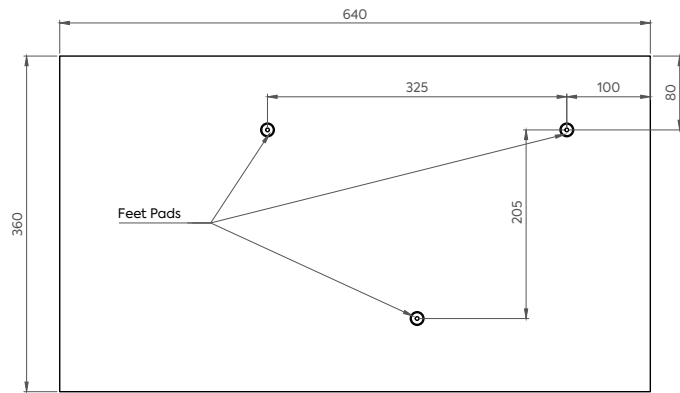
- |  |                                |
|--|--------------------------------|
| 1. Setup and Operating Instructions Manual       | 7. Turntable Power Supply Unit |
| 2. Tonearm Protractor                            | 8. Turntable Platter           |
| 3. Tool Set and a pair of White Gloves           | 9. Turntable Felt Slip Mat     |
| 4. Turntable Silicone Belt                       | 10. Mains Power Cable          |
| 5. Turntable Feet Washers                        |                                |
| 6. Turntable and Tonearm assembly with RCA Cable |                                |

## Product Description

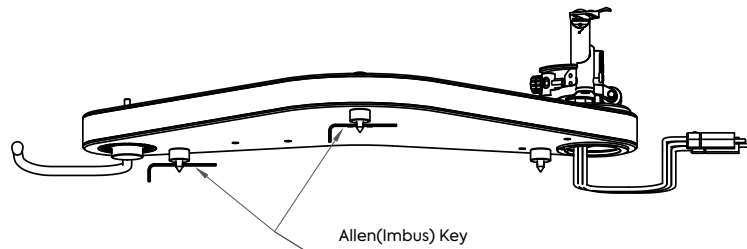


- |                              |                          |
|------------------------------|--------------------------|
| 1. Power Supply Unit PSU     | 11. VTA Adjuster         |
| 2. Turntable Plinth          | 12. Tonearm Lift         |
| 3. Tonearm Assembly          | 13. Tonearm Lift Console |
| 4. Platter                   | 14. Headshell            |
| 5. Motor Assembly            | 15. Finger Lift          |
| 6. Platter Bearing           | 16. PSU Cable            |
| 7. Silicone Belt SILBELT(TM) | 17. Tonearm Cable        |
| 8. Adjustable Feet           | 18. GND Connector        |
| 9. Tonearm Counterweight     | 19. RCA Connector        |
| 10. Antiskating Adjuster     | 20. Mains Switch         |

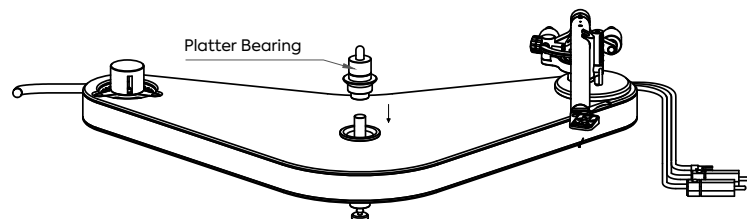
## Initial Setup



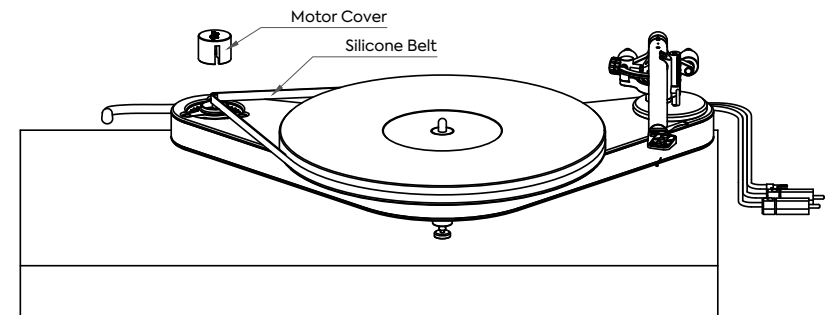
1. Provide at least 640x360mm of space for your turntable
2. Place your Feet Pads to a recommended arrangement in the picture above
3. Insert two Allen(Imbus) keys into Two of the three feet on the turntable, the Front and one of the rear ones. This will help you level the turntable
4. Position the turntable with inserted Allen(Imbus) keys onto the Feet Pads



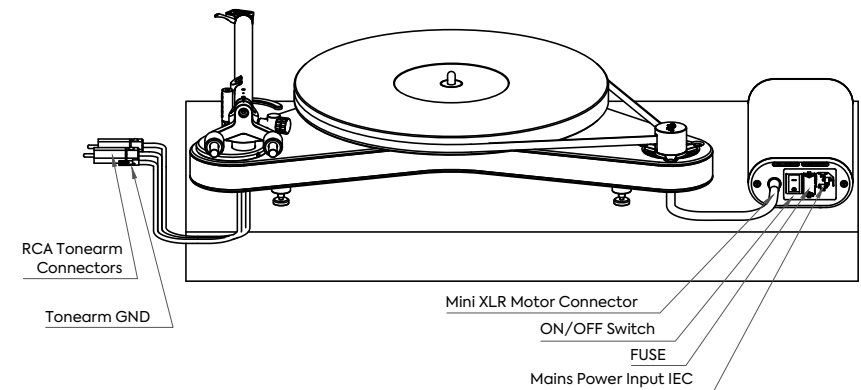
5. Using the provided Spirit-Level adjust the feet so you achieve a level position of the turntable Plinth
6. Locate a Platter Bearing inside the packaging and lubricate the bearing with 5 drops of Provided Oil
7. Position the Platter Bearing carefully on the bearing shaft:



8. Carefully Position the Platter onto the Platter Bearing
9. Remove Motor Cover
10. Locate the Silicone Belt and carefully place it on the Platter first and then on the Motor Pulley
11. Carefully place the Motor Cover back into its position so it doesn't touch the Belt
12. Check the operation of the Platter and Belt by spinning the platter by hand



13. Position the Power Supply Unit and plug in the motor cable with Mini XLR connector
14. Plug in the Mains Power Input IEC cable and switch the power ON



15. Plug the RCA Tonearm connectors into your MM Phono amplifier input
16. Connect the Tonearm GND cable onto the appropriate Grounding GND connector
17. Place the provided Felt-Mat onto the Platter

## Congratulations!

**You have now finished the Initial Setup of your turntable.**

Your Silence Alpha TT-1 turntable comes pre-set from the factory and is ready to play after the Initial Setup.

---

