

NFBIC-6INCAT
6" Line Voltage Incandescent IC / Non-IC Housing
2 Hour Fire & Sound Dampening Rated
Source: 6" - 90W PAR39=8 Max. (Varies with trim)

PRODUCT DESCRIPTION

Specification grade fire-rated new construction housing. The double wall fixture incorporates a non-combustible fiber insulation to prevent passage of flames, toxic gases, ignitable gasses into ceiling plenums. The UL Classified housing is rated for a minimum of 2 hours protection. The noncombustible fiber fill also acts as sound deadening material eliminating the transfer of sound between floors. Suitable for commercial, multi-family and residential applications.

FEATURES

- Rated for direct contact with insulation
- cULus listed for damp location and through branch circuit wiring
- Quick connect provided
- 24-1/2" Bar hangers with captive nails and alignment foot
- Accommodates 1-3/4" maximum ceiling thickness

CONSTRUCTION

Plaster Frame

High quality 0.03" steel die cut one piece frame.

Housing

Die formed 20 guage galvanized steel construction. Housing interior is comprised of a flexible non-combustible insulation.

Air Flow Restriction

Housing has factory installed gaskets to restrict airflow from room into ceiling plenum to <2CFM (cubic feet per minute) in accordance with ASTM-283 Air-Tight requirements.

Socket

Porcelain medium base socket with nickel plated screw shell is pre-wired with 18 guage leads junction box. Socket is adjustable and installs to new trims equipped with socket brackets. Utilizes one 120V incandescent medium base lamp (4"=35W max, 5"=75W max, 6"=90W max). Protective cap included to protect socket interior during ceiling painting.

Bar Hangers

Two 13-3/4" to 24-1/2" adjustable bar hangers with captive nails are included on frame. Bar hangers are parallel to junction box, but can be repositioned 90° perpendicular to junction box if desired. "L" Shaped bar hanger foot to align to bottom of construction joist. A T-Bar notch allow for easy installation in a suspended ceiling.

Junction Box

Prewired 0.03" thick galvanized steel, with seven 1/2" knockouts, four Romex® pryouts, and snap on covers. All leads are #18AWG wire, the ground wire is connected to the bottom, and quick connectors are supplied on all leads. Through branch circuit wiring, (4-in, 4-out).

Quick Connect Feature

Housing contains three UL approved quick connections that allow insertion of 1/4" stripped solid or tinned standard conductors to be inserted into the connector. Connectors are pre-attached to fixture power, common, and ground circuits.

Thermal Protector

Standard UL thermal protector rated for 90°C is affixed to inner top surface of housing.

Installation

Number of luminaires not to exceed the ratio, one per 25sq ft of the total ceiling area, with minimum separation of 3ft between luminaires.

Lamp

Number of luminaires not exceed the ratio, one per 25sq ft of the total ceiling area, with minimum separation of 3ft between luminaires.

Labels and Listings

UL Classified. Two Hour Fire Rating
cULus Listed for Damp Location w/ Feed Through
cULus Wet Listed (Only with designated trims)
Meets or exceeds ASTM-283 Air-Tight Requirements
ANSI/UL 263
ANSI/UL 1598

6" Firebox Incandescent

NFBIC-6INCAT: Line Voltage Incandescent IC/Non-IC Housing, 90W max

NORALIGHTING®

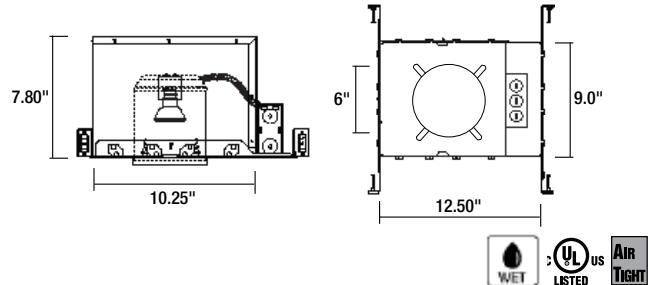
Type

Project

Catalog No.

Lamp/Wattage

DIMENSIONS



Trim Options

Lamp Type:		
PAR 30 75W max		PAR38 90W max
NTA-730B	NTM-50C	NTA-730B
NTA-730W	NTM-50G	NTA-730W
NTS-714B	NTM-54B	NTS-714B
NTS-714C	NTM-54BZ	NTS-714C
NTS-714G	NTM-54CO	NTS-714G
NTS-714W	NTM-54N	NTS-714W
NTM-713BAL	NTM-54W	NTM-713BAL
NTM-713WAL	NTM-56B	NTM-713WAL
NTM-716WAL	NTM-56BG	NTM-716WAL
NTM-716BZ	NTM-56C	NTM-716BZ
NTM-716N	NTM-56G	NTM-716N
NTM-726B	NTM-56W	NTM-726B
NTM-726BZ	NTS-49B	NTM-726BZ
NTM-726CO	NTS-49C	NTM-726CO
NTM-726N	NTS-49G	NTM-726N
NTM-726W	NTS-49W	NTM-726W
NTM-38	NTM-300B	NTM-53B
NTM-39	NTM-300BZ	NTM-53BZ
NT-28	NTM-300CO	NTM-53CO
NT-28B	NTM-300N	NTM-53G
NT-28BZ	NTM-300W	NTM-53N
NT-28CO		NTM-53W
NT-28N		NTM-55B
NT-28W		NTM-55BZ
NT-29C		NTM-55CO
NT-29G		NTM-55N
NTM-52B		NTM-55W
NTM-52BZ		NTM-57B
NTM-52C		NTM-57C
NTM-52CO		NTM-57G
NTM-52G		NTM-57W
NTM-52N		
NTM-52W		
NTM-48		
NTM-48BB		
NTM-49BZ		
NTM-49CO		
NTM-49N		

NORALIGHTING®

6505 Gayhart St., Commerce, CA 90040
www.noralighting.com • Specifications subject to change without notice. © 2011
Phone: 800.686.6672 • FAX: 800.500.9955 • e-mail: nora@noralighting.com