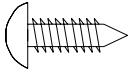
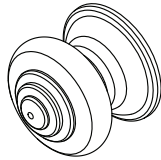


# #284200 INSTRUCTIONS

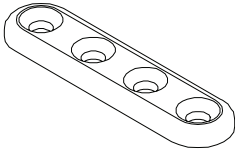


#1 - (8) #3 x 12mm PLATE SCREWS  
4553

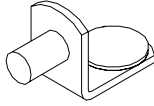


#4 - (2) KNOB  
5222

**HUTCH**  
SHOWN WITH  
REMOVABLE SHELF  
INSTALLED



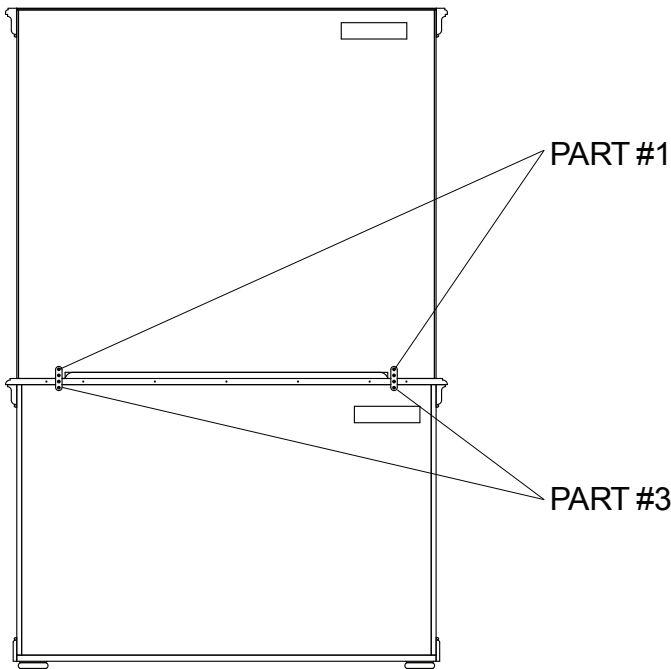
#3 - (2) PLATES  
1536



#2 - (4) - SHELF SUPPORT  
4545



#5 - (2) #7-32 x 25mm SCREW  
5224



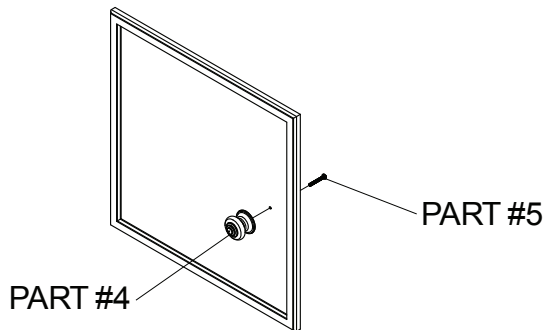
## STEPS:

1. INSTALL PLATES (PART #3) TO BACK OF THE HUTCH USING 4 SCREWS (PART #1) INTO THE PRE-DRILLED HOLES.

2. INSTALL 4 SCREWS (PART #1) THROUGH THE PLATE (PART #3) INTO THE BACK OF THE COMBO UNIT INTO THE PRE-DRILLED HOLES.

3. YOUR HUTCH HAS BEEN PROVIDED WITH A REMOVABLE SHELF DO NOT INSTALL THE SHELF WHILE USING THE COMBO UNIT AS A CHANGING SURFACE. TO INSTALL THE REMOVABLE SHELF INSERT THE SHELF SUPPORTS (PART #2) INTO THE PRE-DRILLED HOLES IN THE SIDE OF THE HUTCH AND PLACE SHELF ON THE SUPPORTS.

4. INSTALL 1 SCREW (PART #5) THROUGH BACK OF DOOR IN PRE-DRILLED HOLE INTO (PART #4) KNOB. REPEAT THIS STEP ON 2 SECOND DOOR.



SIMMONS JUVENILE FURNITURE  
A DIVISION OF DELTA ENTERPRISE CORP.  
114 WEST 26TH STREET  
NEW YORK, NY 10001  
PHONE: 1-800-218-2741  
TÉLÉPHONE: 1-800-218-2741  
TELÉFONO: 1-800-218-2741  
FAX: (920) 882-7069

Trademark is a registered trademark of Dreamwell, LTD., a subsidiary of Simmons Bedding Company, Atlanta, GA  
Manufactured by Delta Enterprise Corp under license from the trademark owner, Dreamwell, LTD., a subsidiary of Simmons Bedding Company, Atlanta, GA

MAY 26, 2009  
5223