

Outdoor Cat Hammock Assembly Instructions

Visit us at www.luxeypets.com
Contact Us at contact@luxeypets.com

IMPORTANT NOTICE:

Check your Outdoor Cat Hammock regularly for damage or fatigue. Some components are made from steel and the coating may need maintenance over time. We recommend regularly rinsing with potable water, especially if you live in an area that is coastal. If rust spots do develop, repair the area. If unsure how to do this, seek professional advice.

This product is intended for use by cats only. Upon completion of your new outdoor cat hammock, customers are advised to closely monitor the initial behavior of your cats' when inside the enclosure.

WARNING: CHOKING HAZARD SMALL PARTS. KEEP CHILDREN UNDER 3 AND PETS CLEAR OF PRODUCT DURING ASSEMBLY

Components supplied with your Outdoor Cat Hammock purchase:



1 x Hammock



2 x Mounting Rails



2 x Screw + Wingnut



8 x Wall Screw + Plug



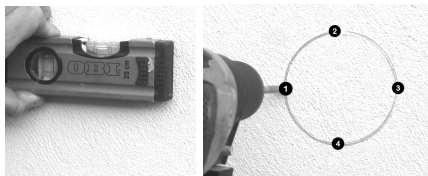
2 x Washers

BEFORE YOU BEGIN: : Read all instructions before set-up to familiarize yourself with parts. Scan QR above to view assembly video if required,

PART ONE: ENCLOSURE ASSEMBLY

Step 1. (Brick or Concrete Surface)

If you are installing onto a brick wall, LuxeyPets recommend first marking out where the hammock will be installed and then pre-drilling and hammering in wall plugs. This will help anchor the hammock to the surface.



Step 2. (Timber Surface)

On a wooden surface you will be able to use the mounting screws to drill the mounting rail directly to the surface. We suggest pre drilling pilot holes to avoid wood splitting.



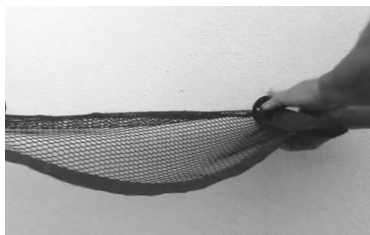
Step 3.

Slide the hem of the hammock over the mounted rail.



Step 4.

Slide the second rail into the other side hem of the hammock, pull it across to stretch out the hammock and hold the rail up against the wall.



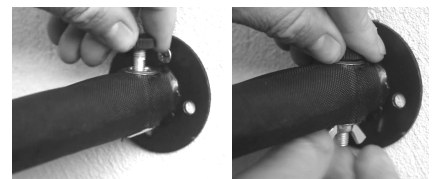
Step 5.

Drill the second mounting rail into position whilst ensuring the hammock is nice and taught.



Step 6.

Insert the 2 Assembly Screws with a washer through the holes at the top of the hammock. Secure using a wingnut from underneath the hammock.



NOTE: In no event shall our company be liable for any direct, indirect, punitive, incidental, special, consequential damages to property or life, whatsoever arising out of or connected with the use or misuse of our products. Please read instructions carefully and use products with caution.