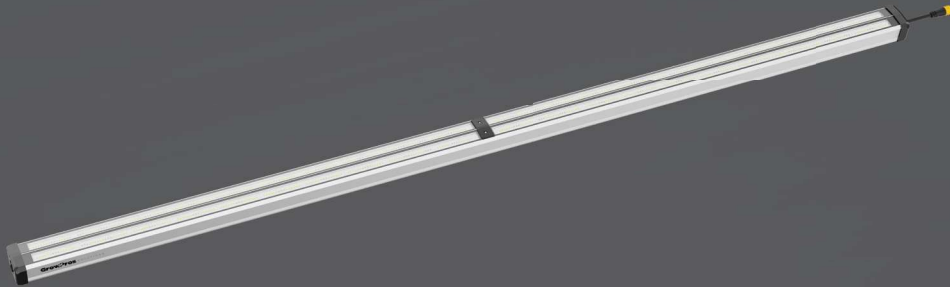


COMMERCIAL SOLUTIONS DESIGNED SPECIFICALLY FOR INDOOR CANNABIS CULTIVATION

Under Canopy Lighting 8Ft

GPS-UCL4-300W

Upgrade your cultivation and leave no buds behind. By utilizing our specially designed under canopy lights you can maximize your growth and yields by illuminating the previously underlit areas of your plants.



FEATURES & BENEFITS

- Improve B-bud size, structure, density, and coloring.
- Optimized full spectrum proven by growers - great for veg and exceptional for boosting flower - includes 4000k, 660nm Deep Red, and 730nm infrared diodes.
- IP65 rated for easy cleaning and protection from IPM sprays, irrigation leaks, and employees getting crazy with the watering wand.
- Compact and lightweight, quick to set up, easy to work around for harvest or quick to uninstall when between trellis layers.
- One Under Canopy Light will cover 7' in length and 6' in width of under canopy, add a second row to further increase your yields!



LINK UP MULTIPLE FIXTURES

Power Chaining and Data Chaining through same connections, no extra wires required.

Daisy chain option:

5 pcs @ 120V

6 pcs @ 208V

7 pcs @ 220V

8 pcs @ 240V

9 pcs @ 277V

ADJUSTABLE HEIGHT

Telescopic legs adjust to the plant growth for the perfect light coverage.

*Legs sold separately

use our height adjustable legs with rolling benches.



Aluminum housing results in 10x faster heat dissipation compared to plastic shells.

Rated IP65; worry free when spraying

LED LIGHTING SOLUTION FOR COMMERCIAL, INDOOR, AND GREENHOUSE APPLICATIONS

SPECIFICATIONS

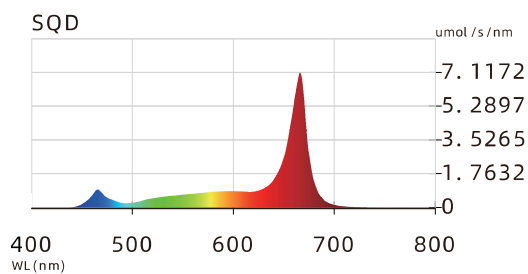
WATTAGE	300W (Channel 1: 250W R/W) (Channel 2: 50W IR)
INPUT VOLTAGE	120V-277V
CONTROL	0-10V DIMMING
DATA CONNECTION	RJ-12
POWER FACTOR	>0.9
THERMAL MANAGEMENT	PASSIVE
WORKING TEMPERATURE	0°F to 104°F
IP RATING	Waterproof IP65
LIFETIME	L90: >36,000 hrs
WARRANTY	5 YEARS
CERTIFICATIONS	ETL
HEAT LOAD PER FIXTURE	1023 BTUs

MAXIMUM POWER ELECTRICAL DATA

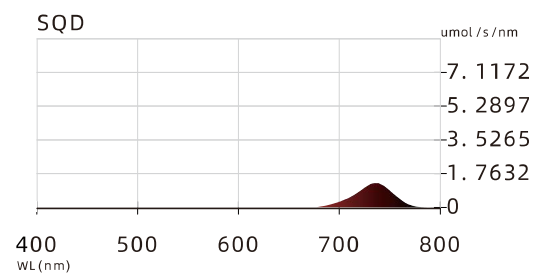
	120V	208V	220V	240V	277V
AC CURRENT	2.54A	1.46A	1.37A	1.25A	1.07A
AC POWER	305W	303W	302W	300W	297W
POWER FACTOR	0.99	0.98	0.98	0.97	0.97
DAISY CHAIN		6	7	8	9

SPECTRUM GRAPH

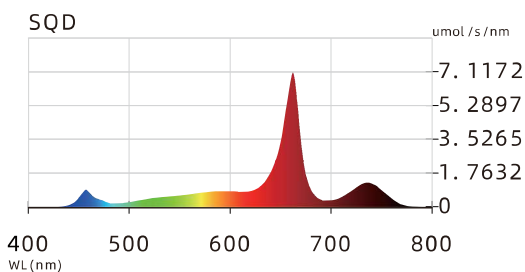
CHANNEL 1 100%



CHANNEL 2 100%



ALL CHANNEL 100%



PERFORMANCE DATA

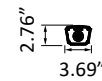
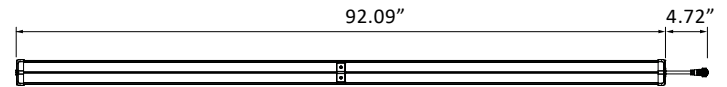
PERFORMANCE DATA	MAX POWER
PPE	3.0 $\mu\text{mol/s}$
PPF	900 $\mu\text{mol/s}$

DIMENSIONS

Side View:



Top View:



BOX GROSS WEIGHT: 61 lbs