

570 PH-BT, FRESH TEST PROCEDURE



The 570 pH-BT, Fresh test procedure utilizes the **STANDARD LIQUID METHOD** to accurately achieve a pH reading with the eXact iDip® 570 Smart Photometer System®. For tips on achieving best accuracy, and additional information regarding features of the eXact iDip® 570 photometer and the eXact iDip® app, please refer to the eXact iDip® Smart Guide. You can download a copy on our website at exactdip.com. **Test procedures can vary from test to test. Read full instructions and watch instructional video within the app.**

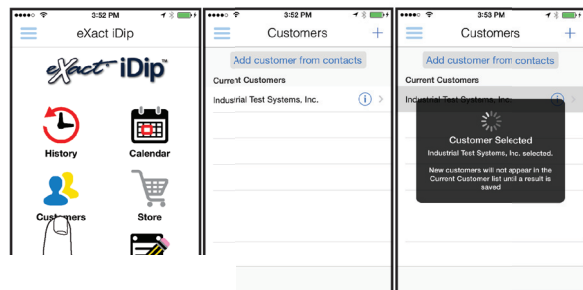
YOU WILL NEED

- eXact iDip® 570 photometer
- Your smartphone/tablet with the eXact iDip® app installed
- 2 drops eXact® Reagent P-pH (Part No. 486657)
- Water sample for rinsing and testing

1 SELECT CUSTOMER

- Select '**Customers**' from the Home screen.
- Choose customer from list
OR Tap '**Add customer from contacts**' and choose customer from your contacts list
OR Tap '+' to create a new customer
 Android users: If no address is found, tap "No addresses found"
- Verify customer has been selected

Note: To take full advantage of the GPS and Data Storage features, each test result must be linked to a contact. Individual users may select their contact listing.

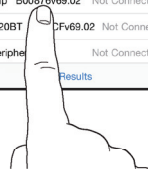
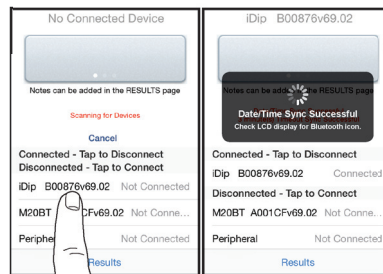


b c

4 CONNECT EXACT IDIP® 570

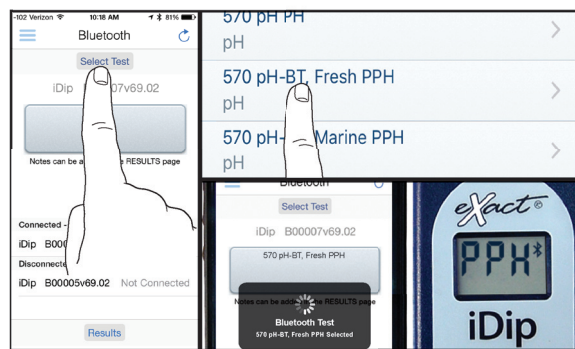
The eXact iDip® app will automatically connect to the most recently used eXact iDip® 570 photometer. If not, select your eXact iDip® 570 from the bottom of the screen.

Note: Always connect your eXact iDip® photometer via the Bluetooth® connection within the app. If you experience an issue connecting your device, check that your smartphone/tablet's Bluetooth® is turned on and your device is compatible.



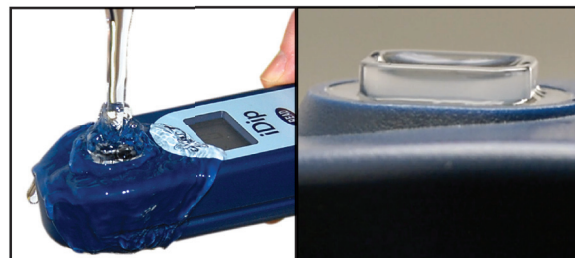
5 SELECT TEST

Tap '**SELECT** Test' at the top and select **570 pH-BT, Fresh PPH** (if this is not visible, purchase the test from the Store). The eXact iDip® 570 photometer and eXact iDip® app will both display the test selection for pH-BT.



6 FILL CELL

Before testing, rinse CELL and clean with brush thoroughly. Finally, rinse the cell 3 times with the water sample to be tested, then **FILL** cell to capacity to begin test (refer to video in app). Tilt meter to remove about 0.2mL of sample to leave room for liquid reagent.

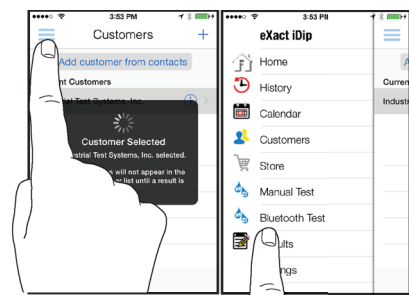


ICT IDIP® 570

to power on the eXact iDip® 570

OOOTH TEST

' and select 'Bluetooth Test' from the



ready for testing.



ZERO/ON

8 SHAKE REAGENT

Shake the bottle of eXact® Reagent F

9 ADD DROPS

Remove the Cell Cover and add 4 drops of eXact® Reagent F to the CELL. The test bottle remains vertical while adding drops.



of eXact® Reagent F. The test bottle remains vertical while adding drops.

10 COVER & MIX

Place the Cell Cover onto the CELL. Turn the meter clockwise to mix the sample during the 20 second timer displays "1", place the eXact® Reagent F on the flat surface.

READ

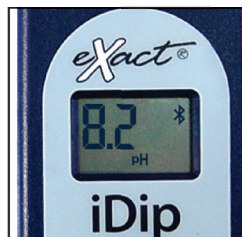
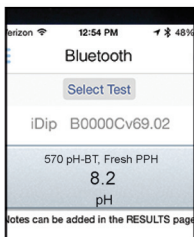
0

flat



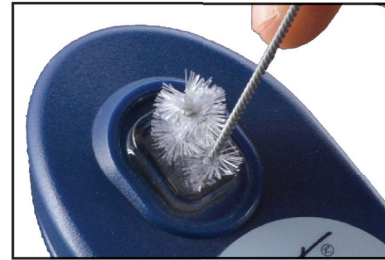
11 READ RESULTS

READ result displayed as pH. After testing is complete, rinse CELL immediately.



WITH BRUSH

CELL immediately and clean with brush to remove reagent which coat the CELL wall.

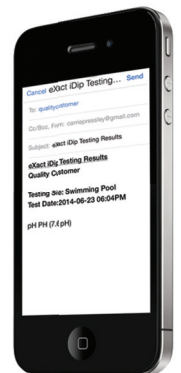


TIPS

- It is recommended to clean the cell thoroughly, with water and the brush provided, before running this test.
- Before running test unlock 570 pH-BT, Fresh PPH test by purchasing in the Store.
- To obtain optimal accuracy when testing in direct sunlight, use the Cell Cover when zeroing and reading the sample.
- It is recommended to use the Cell Cleaning Brush with water to clean the CELL after each test to remove reagents which coat the CELL wall.

MANAGE YOUR RESULTS

Save, send, and share results instantly using the eXact iDip® app. For step-by-step instructions, refer to the eXact iDip® Smart Guide. You can download a pdf copy on-line at exactdip.com.



eXact iDip