

570 PHOSPHATE TEST PROCEDURE



The 570 Phosphate test procedure utilizes the **STANDARD STRIP METHOD** using the eXact iDip® 570 Smart Photometer System®. For tips on achieving best accuracy, and additional information regarding features of the eXact iDip® 570 photometer and the eXact iDip® app, please refer to the eXact iDip® Smart Guide. You can download a copy on our website at exactidip.com. **Test procedures can vary from test to test. Read full instructions and watch instructional video within the app.**

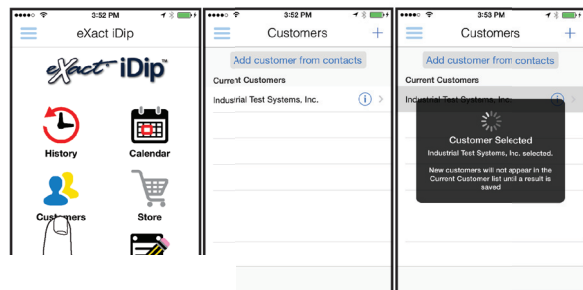
YOU WILL NEED

- eXact iDip® 570 photometer
- Your smartphone/tablet with the eXact iDip® app installed
- (1) eXact® Strip Micro Phosphate (Part No. 486814)
- Water sample for rinsing and testing

1 SELECT CUSTOMER

- Select **'Customers'** from the Home screen.
- Choose customer from list
 - OR** Tap **'Add customer from contacts'** and choose customer from your contacts list
 - OR** Tap **'+'** to create a new customer
- Android users: If no address is found, tap "No addresses found"
- c. Verify customer has been selected

Note: To take full advantage of the GPS and Data Storage features, each test result must be linked to a contact. Individual users may select their contact listing.



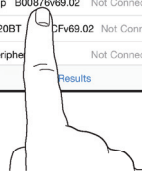
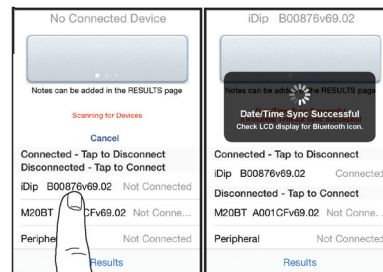
b

c

4 CONNECT EXACT IDIP® 570

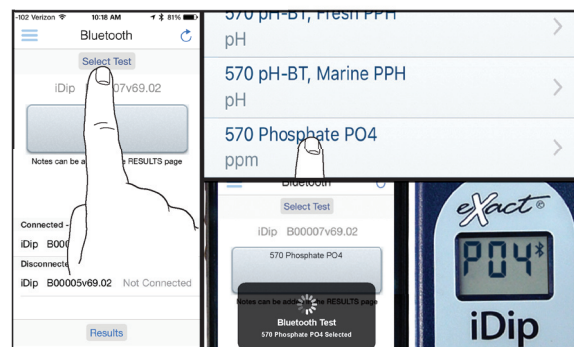
The eXact iDip® app will automatically connect to the most recently used eXact iDip® 570 photometer. If not, select your eXact iDip® 570 from the bottom of the screen.

Note: Always connect your eXact iDip® photometer via the Bluetooth® connection within the app. If you experience an issue connecting your device, check that your smartphone/tablet's Bluetooth® is turned on and your device is compatible.



5 SELECT TEST

Tap **'SELECT Test'** at the top and select **570 Phosphate PO4** (if this is not visible, purchase the test from the Store). The eXact iDip® 570 photometer and eXact iDip® app will both display the test selection for **Phosphate**.



6 FILL CELL

Before testing, rinse CELL and clean with brush thoroughly. Finally, rinse the cell 3 times with the water sample to be tested, then **FILL** cell to capacity to begin test (refer to video in app).

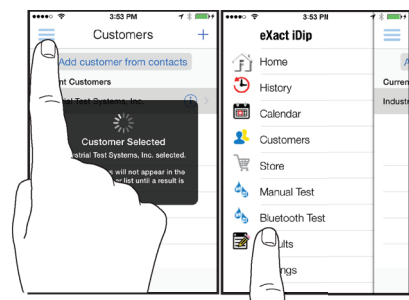


ICT IDIP® 570

to power on the eXact iDip® 570

OOOTH TEST

' and select 'Bluetooth Test' from the



7 CAP CELL AND ZERO METER

Place the Cell Cover onto the CELL and press the **ZERO/ON** button. The eXact iDip® 570 photometer display reads 0.00. The meter is ready for testing.

ZERO/ON**8 REMOVE STRIP**

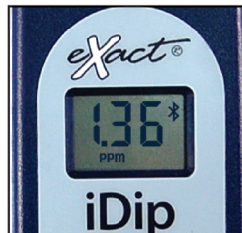
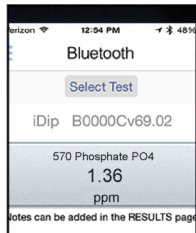
Remove one eXact® Strip Micro Phosphate (Part No. 486814) and set it in a dry, convenient place. Replace cap on bottle.

**9 READ**

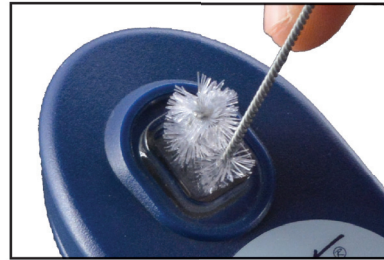
Countdown and simultaneously dip the strip into the sample. Gently touching the bottom of the CELL in a vertical up and forth motion (2 strokes per second). After 120 seconds, remove and discard the strip. The eXact iDip photometer will now display a 120 second count-up timer. Make sure your smart device does not go to sleep.

**10 CAP CELL AND READ RESULTS**

Place the Cell Cover onto the CELL and **READ** result displayed as Phosphate.

**WITH BRUSH**

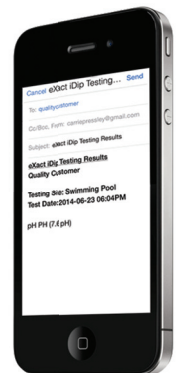
Remove the CELL immediately and clean with brush to thoroughly clean and coat the CELL wall.

**TIPS**

- Due to the strip slitting process, you may find one or two strips that are noticeably smaller or larger in width than the normal strips in the bottle. These should be discarded. Using these strips may give unreliable results.
- Before running test unlock 570 Phosphate test by purchasing in the Store.
- Clean CELL with 0.1N HCl, Distilled Vinegar (5%), or Muriatic Acid (diluted 1:40 with H₂O) before testing.
- To obtain optimal accuracy when testing in direct sunlight, use the Cell Cover when zeroing and reading the sample.
- It is recommended to use the Cell Cleaning Brush with water to clean the CELL after each test to remove reagents which coat the CELL wall.
- Be careful while dipping the strip (step 9). Do not spill the sample from the CELL.
- If running multiple tests in a row, using the same water sample, the CELL does not have to be rinsed or cleaned with acid between each test. It is recommended that the CELL be rinsed three times with the sample water.
- The calibration of the meter is based on a water temperature between 15°C (59°F) and 31°C (88°F). If temperature is below 15°C (59°F), your final Phosphate value may read low.

MANAGE YOUR RESULTS

Save, send, and share results instantly using the eXact iDip® app. For step-by-step instructions, refer to the eXact iDip® Smart Guide. You can download a pdf copy on-line at exactidip.com.



eXact iDip