

570 COPPER TEST PROCEDURE



The 570 Copper test procedure utilizes the **STANDARD STRIP METHOD** using the eXact iDip® 570 Smart Photometer System®. For tips on achieving best accuracy, and additional information regarding features of the eXact iDip® 570 photometer and the eXact iDip® app, please refer to the eXact iDip® Smart Guide. You can download a copy on our website at exactidip.com. **Test procedures can vary from test to test. Read full instructions and watch instructional video within the app.**

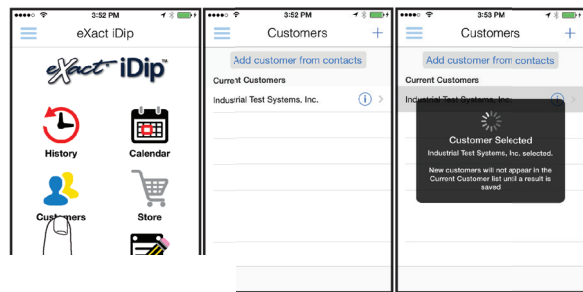
YOU WILL NEED

- eXact iDip® 570 photometer
- Your smartphone/tablet with the eXact iDip® app installed
- (1) eXact® Strip Micro Copper (Part No. 486632)
- Water sample for rinsing and testing

1 SELECT CUSTOMER

- Select **'Customers'** from the Home screen.
- Choose customer from list
OR Tap **'Add customer from contacts'** and choose customer from your contacts list
OR Tap **'+'** to create a new customer
- Android users: If no address is found, tap "No addresses found"
- Verify customer has been selected

Note: To take full advantage of the GPS and Data Storage features, each test result must be linked to a contact. Individual users may select their contact listing.

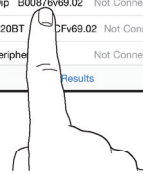
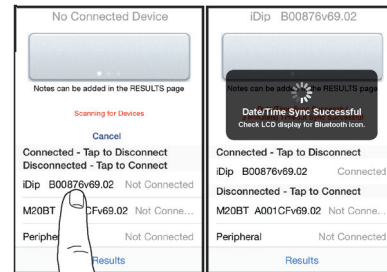


b c

4 CONNECT EXACT IDIP® 570

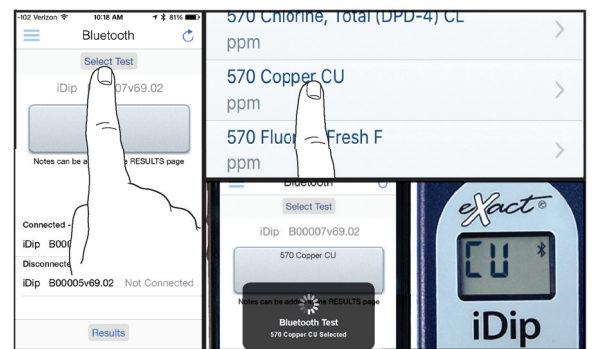
The eXact iDip® app will automatically connect to the most recently used eXact iDip® 570 photometer. If not, select your eXact iDip® 570 from the bottom of the screen.

Note: Always connect your eXact iDip® photometer via the Bluetooth® connection within the app. If you experience an issue connecting your device, check that your smartphone/tablet's Bluetooth® is turned on and your device is compatible.



5 SELECT TEST

Tap **'SELECT Test'** at the top and select **570 Copper CU** (if this is not visible, purchase the test from the Store). The eXact iDip® 570 photometer and eXact iDip® app will both display the test selection for Copper.



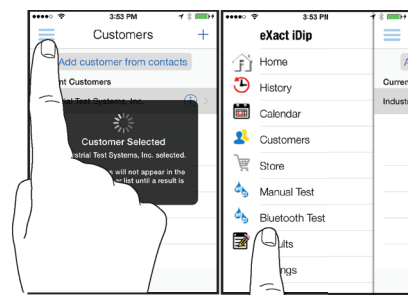
2 TACT IDIP® 570

to power on the eXact iDip® 570



3 TOUCH TEST

'≡' and select 'Bluetooth Test' from the



6 FILL CELL

Before testing, rinse CELL and clean with brush thoroughly. Finally, rinse the cell 3 times with the water sample to be tested, then **FILL** cell to capacity to begin test (refer to video in app).



7 CAP CELL AND ZERO METE

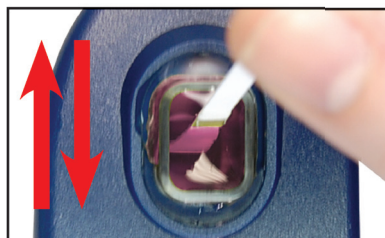
Place the Cell Cover onto the CELL and press the **ZERO/ON** button. The eXact iDip® 570 photometer display reads 0. The meter is ready for testing.

ZERO/ON**8 REMOVE STRIP**

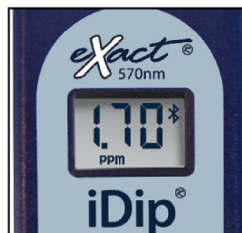
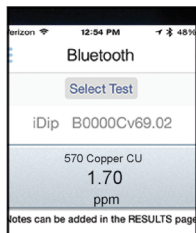
Remove one eXact® Strip Micro Copper (Part No. 486632) and set in a dry, convenient place. Replace cap on bottle.

**9 READ**

Countdown and simultaneously gently touching the bottom of the CELL with the strip in a back and forth motion (2 strokes per second) for 120 seconds. Remove and discard the strip. The eXact iDip® photometer will now display a 120 second count-up timer. Make sure your smart device does not go to sleep.

**10 CAP CELL AND READ RESULTS**

Place the Cell Cover onto the CELL and **READ** result displayed as Copper.

**WITH BRUSH**

Remove the CELL immediately and clean with brush to remove any reagent which coat the CELL wall.

**TIPS**

- Due to the strip slitting process, you may find one or two strips that are noticeably smaller or larger in width than the normal strips in the bottle. These should be discarded. Using these strips may give unreliable results.
- Before running test unlock 570 Copper test by purchasing in the Store.
- To obtain optimal accuracy when testing in direct sunlight, use the Cell Cover when zeroing and reading the sample.
- It is recommended to use the Cell Cleaning Brush with water to clean the CELL after each test to remove reagents which coat the CELL wall.
- Be careful while dipping the strip (step 9). Do not spill the sample from the CELL.

MANAGE YOUR RESULTS

Save, send, and share results instantly using the eXact iDip® app. For step-by-step instructions, refer to the eXact iDip® Smart Guide. You can download a pdf copy on-line at exactdip.com.



eXact iDip

