



570 CHLORIDE HIGH TEST PROCEDURE

The 570 Chloride High test procedure utilizes Mini Dilution Kit II and eXact® Strip Micro to accurately achieve a Chloride reading with the eXact iDip® 570 Smart Photometer System®. For tips on achieving best accuracy, and additional information regarding features of the eXact iDip® 570 photometer and the eXact iDip® app, please refer to the eXact iDip® Smart Guide. You can download a copy on our website at exactidip.com. **Test procedures can vary from test to test. Read full instructions and watch instructional video within the app.**

YOU WILL NEED

- eXact iDip® 570 photometer
- Your smartphone/tablet with the eXact iDip® app installed
- 1 eXact® Strip Micro CH (Part No. 486757)
- Mini Dilution Kit II (Part No. 487202)
- Water sample and distilled/deionized water for dilution, rinsing, and testing

1 PREPARE SAMPLE

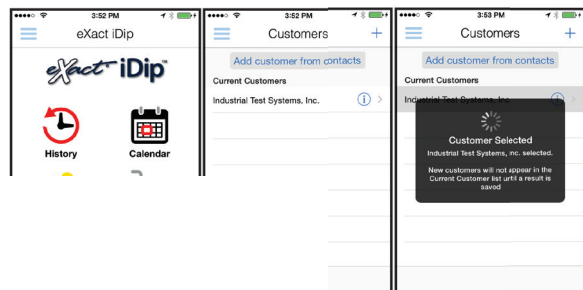
Prepare sample for testing using **Mini Dilution Kit II #487202**.

1. Rinse 50mL graduated conical tube with distilled or deionized (salt-free) water.
2. Rinse the 3.0mL syringe with saltwater sample to be tested. Finally, fill the 3.0mL syringe to the 2.0mL line very precisely (plunger ring should line up at the 2.0mL line and little or no air bubble should be present).
3. Add the syringe content (2.0mL salt water sample) to a clean 50mL graduated conical tube by pushing plunger all the way down to expel sample.
4. Now, fill the graduated conical tube to the 40mL line with distilled or deionized (salt-free) water. Cap graduated conical tube.
5. Mix content of graduated conical tube by turning up side down at least three times. 1:20 Dilution Sample is ready for testing.

2 SELECT CUSTOMER

- a. Select **'Customers'** from the Home screen.
- b. Choose customer from list
OR Tap **'Add customer from contacts'** and choose customer from your contacts list
OR Tap **'+'** to create a new customer
 Android users: If no address is found, tap "No addresses found"
- c. Verify customer has been selected

Note: To take full advantage of the GPS and Data Storage features, each test result must be linked to a contact. Individual users may select their contact listing.



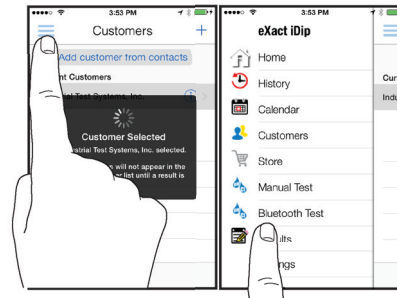
c

iDip® 570

on the eXact iDip® 570

4 SELECT BLUETOOTH TEST

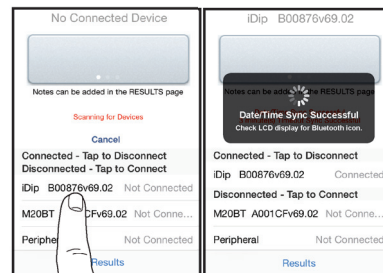
Tap the menu slide out '≡' and select 'Bluetooth Test' from the choices shown.



5 CONNECT EXACT IDIP® 570

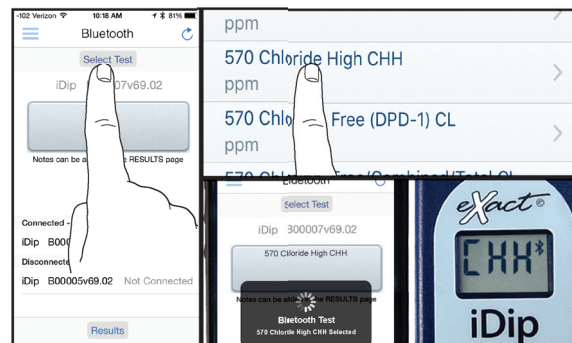
The eXact iDip® app will automatically connect to the most recently used eXact iDip® 570 photometer. If not, select your eXact iDip® 570 from the bottom of the screen.

Note: Always connect your eXact iDip® photometer via the Bluetooth® connection within the app. If you experience an issue connecting your device, check that your smartphone/tablet's Bluetooth® is turned on and your device is compatible.



6 SELECT TEST

Tap **'SELECT Test'** at the top and select **570 Chloride High CHH** (if this is not visible, purchase the test from the Store). The eXact iDip® 570 photometer and eXact iDip® app will both display the test selection for Chloride High.



photometer.

7 FILL CELL

Before testing, rinse CELL and clean with brush thoroughly. Finally, rinse the cell 3 times with the water sample to be tested, then **FILL** cell to capacity to begin test (refer to video in app).



8 CAP CELL AND ZERO METER

Place the Cell Cover onto the CELL and eXact iDip® 570 photometer display reameter is ready for testing.

ZERO/ON



9 REMOVE STRIP

Remove one eXact® Strip Micro CH (Part No. 486757) and set in a dry, convenient place. Replace cap on bottle.



10

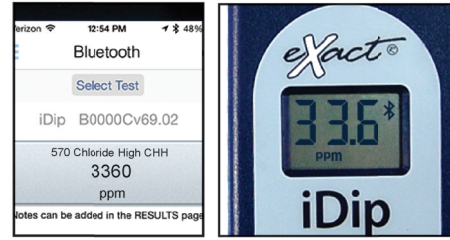
READ

and countdown and simultaneously gently, gently touching the bottom of the cell with the strip in a back and forth motion (2 strokes per 1". Remove and discard the strip.



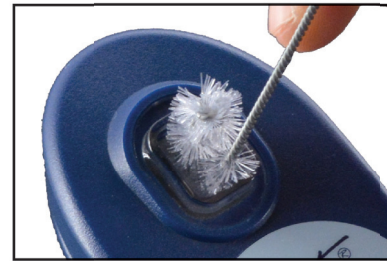
11 CAP CELL AND READ RESULTS

Place the Cell Cover onto the CELL and **READ** result displayed as Chloride. Use the result as displayed on your smart device. Due to the limit of three digits on the eXact iDip® 570 photometer, the result on the LCD display should be multiplied by 100 as shown below (ex. 33.6 = 3360 ppm).



12 CLEAN CELL WITH BRUSH

After testing, rinse CELL immediately and clean with brush to remove reagents which coat the CELL wall.

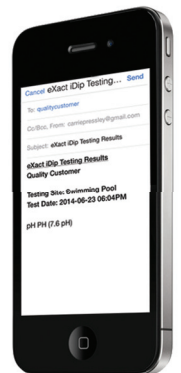


TIPS

- Due to the strip slitting process, you may find one or two strips that are noticeably smaller or larger in width than the normal strips in the bottle. These should be discarded. Using these strips may give unreliable results.
- Before running test unlock 570 Chloride High test by purchasing in the Store.
- To obtain optimal accuracy when testing in direct sunlight, use the Cell Cover when zeroing and reading the sample.
- It is recommended to use the Cell Cleaning Brush with water to clean the CELL after each test to remove reagents which coat the CELL wall.
- Be careful while dipping the strip (step 10). Do not spill the sample from the CELL.

MANAGE YOUR RESULTS

Save, send, and share results instantly using the eXact iDip® app. For step-by-step instructions, refer to the eXact iDip® Smart Guide. You can download a pdf copy on-line at exactdip.com.



eXact iDip