

570 CALCIUM, FRESH TEST PROCEDURE



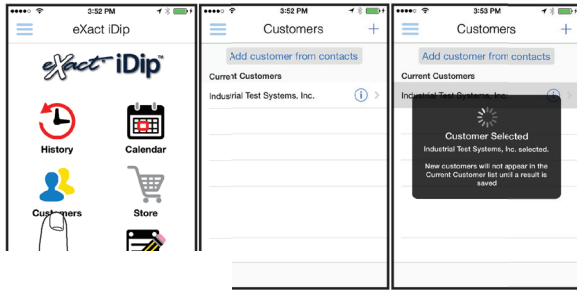
The 570 Calcium, Fresh test procedure utilizes the **STANDARD STRIP METHOD** using the eXact iDip® 570 Smart Photometer System®. For tips on achieving best accuracy, and additional information regarding features of the eXact iDip® 570 photometer and the eXact iDip® app, please refer to the eXact iDip® Smart Guide. You can download a copy on our website at exactdip.com. **Test procedures can vary from test to test. Read full instructions and watch instructional video within the app.**

YOU WILL NEED

- eXact iDip® 570 photometer
- Your smartphone/tablet with the eXact iDip® app installed
- (1) eXact® Strip Micro Calcium Hardness (Part No. 486629)
- Water sample for rinsing and testing

1 SELECT CUSTOMER

- Select **'Customers'** from the Home screen.
 - Choose customer from list
OR Tap **'Add customer from contacts'** and choose customer from your contacts list
OR Tap **'+'** to create a new customer
 Android users: If no address is found, tap "No addresses found"
 - Verify customer has been selected
- Note: To take full advantage of the GPS and Data Storage features, each test result must be linked to a contact. Individual users may select their contact listing.*

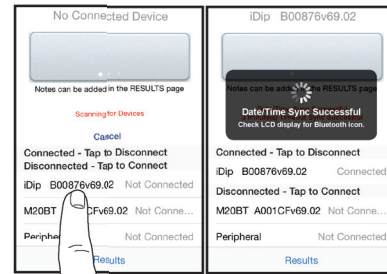


b c

4 CONNECT EXACT IDIP® 570

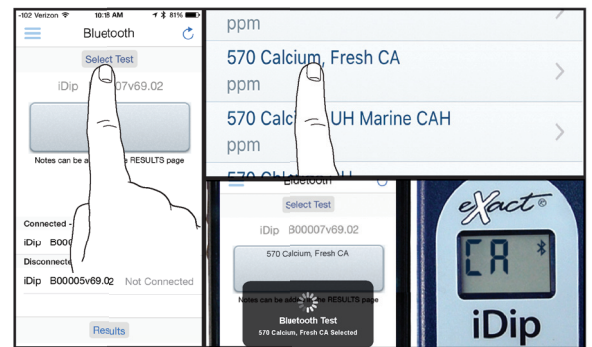
The eXact iDip® app will automatically connect to the most recently used eXact iDip® 570 photometer. If not, select your eXact iDip® 570 from the bottom of the screen.

Note: Always connect your eXact iDip® photometer via the Bluetooth® connection within the app. If you experience an issue connecting your device, check that your smartphone/tablet's Bluetooth® is turned on and your device is compatible.



5 SELECT TEST

Tap **'SELECT Test'** at the top and select **570 Calcium, Fresh CA** (if this is not visible, purchase the test from the Store). The eXact iDip® 570 photometer and eXact iDip® app will both display the test selection for Calcium Hardness.



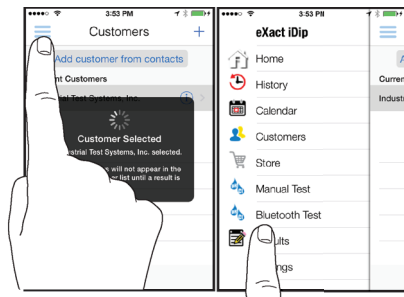
6 FILL CELL

Before testing, rinse CELL and clean with brush thoroughly. Finally, rinse the cell 3 times with the water sample to be tested, then **FILL** cell to capacity to begin test (refer to video in app).



TURN ON
 to power on the eXact iDip® 570

PERFORM TEST
 ' and select 'Bluetooth Test' from the



7 CAP CELL AND ZERO METE

Place the Cell Cover onto the CELL and press the **ZERO/ON** button. The eXact iDip® 570 photometer display reads 0. The meter is ready for testing.

ZERO/ON**8 REMOVE STRIP**

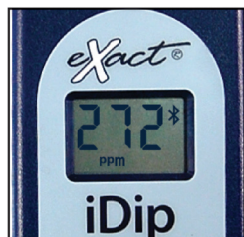
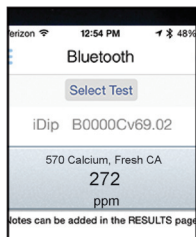
Remove one eXact® Strip Micro Calcium Hardness (Part No. 486629) and set in a dry, convenient place. Replace cap on bottle.

**9 READ**

Countdown and simultaneously **DIP** the strip into the CELL, touching the bottom of the cell. Move the strip in a circular motion (2 strokes per second) and discard the strip.

**10 CAP CELL AND READ RESULTS**

Place the Cell Cover onto the CELL and **READ** the result displayed as Calcium Hardness.

**WITH BRUSH**

Remove the CELL immediately and clean with brush to remove any reagent which coat the CELL wall.

**TIPS**

- Due to the strip slitting process, you may find one or two strips that are noticeably smaller or larger in width than the normal strips in the bottle. These should be discarded. Using these strips may give unreliable results.
- Before running test unlock 570 Calcium Hardness test by purchasing in the Store.
- To obtain optimal accuracy when testing in direct sunlight, use the Mixing Cap/Cell Cover when zeroing and reading the sample.
- It is recommended to use the Cell Cleaning Brush with water to clean the CELL after each test to remove reagents which coat the CELL wall.
- Be careful while dipping the strip (step 9). Do not spill the sample from the CELL.
- This test is accurate in water with Salt <2,000 ppm as NaCl. Salt levels from 2,000 to 24,000 ppm as NaCl give 10-15% error. For samples with Salt levels greater than 25,000 ppm as NaCl, contact ITS.

MANAGE YOUR RESULTS

Save, send, and share results instantly using the eXact iDip® app. For step-by-step instructions, refer to the eXact iDip® Smart Guide. You can download a pdf copy on-line at exactdip.com.



eXact iDip

