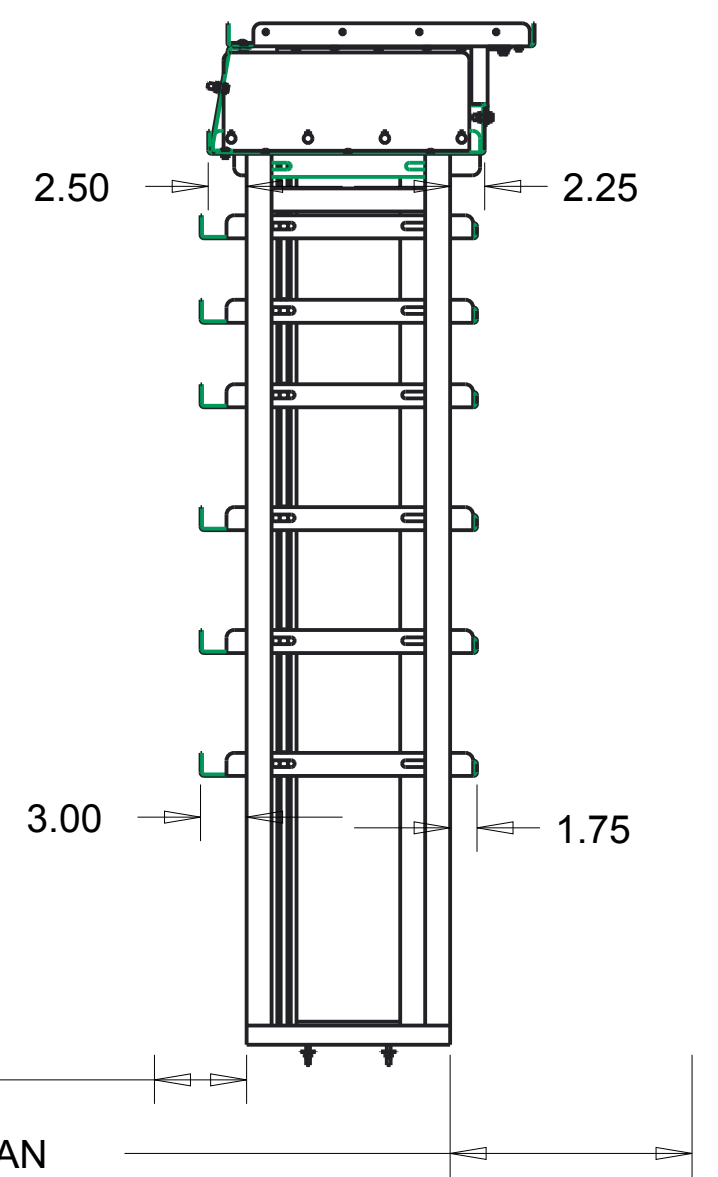
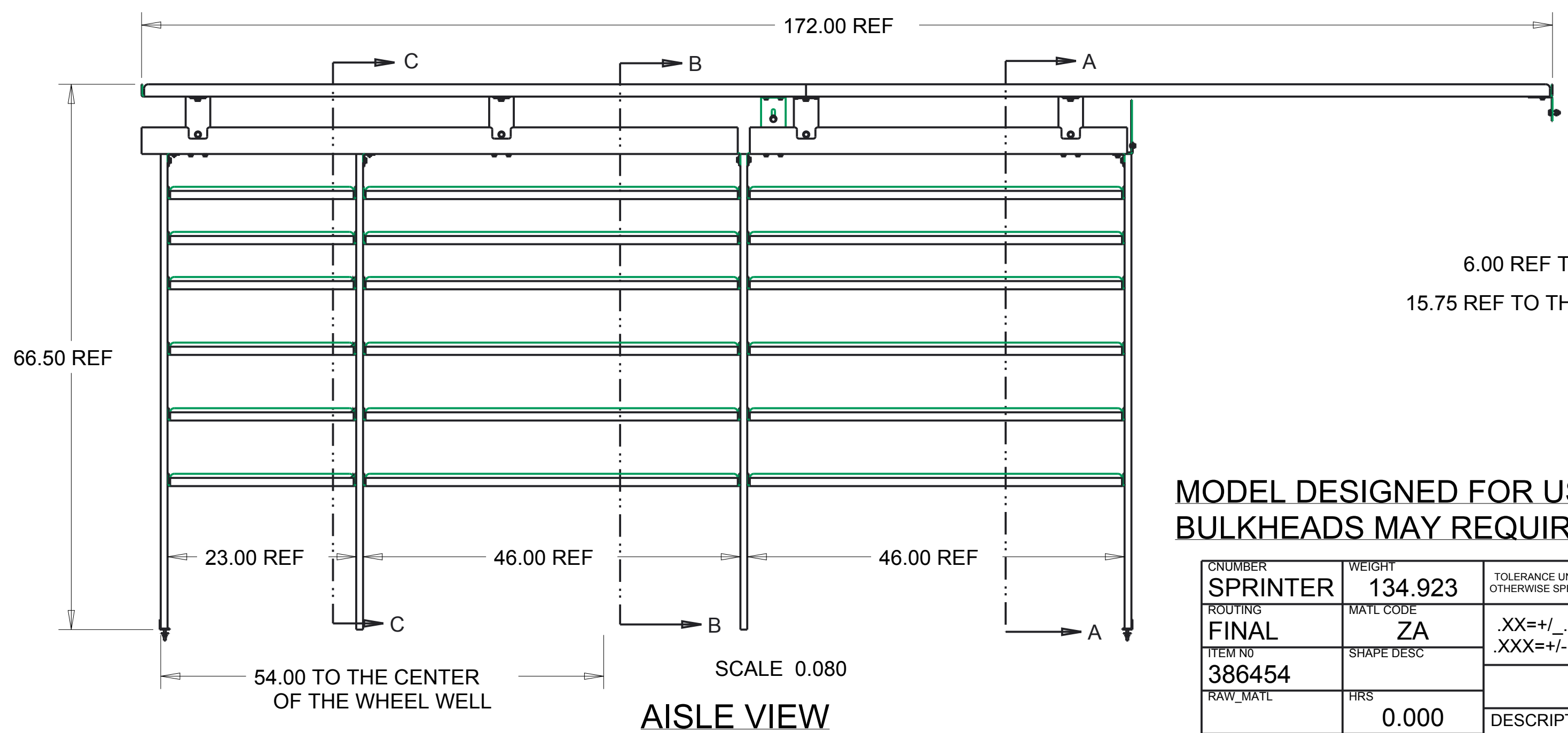


BBL NO.	ITEM DESCRIPTION	LENGTH	WIDTH	WEIGHT	MATL CODE	QTY REQD	ITEM NO.	MODEL NAME
1	ANGLE - .10X3.00X3.00X13.25	13.250	5.805	0.334	BB2	1	386453	P16C0440
2	ANGLE-.10X1.50X1.50X 13.25	13.250	2.810	0.334	BB2	3	385287	P15C0410
3	CHANNEL-LADDER SUPPORT			0.317	BB1	4	386448	P16C0395
4	NUT-HEX .25 SST			0.007	E1	44	807862	807862
5	NUT-HEX .38 LK			0.018	E1	14	1485	1485
6	NUT-UNISTRUT W/O SPRING .38-16			0.086	C4	82	802807	802807
7	PIPE STOP SHEET	16.000	7.310	1.127	BB2	1	386422	P16C0285
8	SCREW-CARRIAGE .25X .50			0.013	E0	40	826255	826255
9	SCREW-HEX 3/8-13X 1.00 FLANGE			0.059	E1	14	1490	1490
10	SCREW-HEX.25X1.50 SST			0.027	E0	4	803172	803172
11	SCREW-HEX.38X .75 GR5	0.750		0.043	E0	82	802804	802804
12	SHEET-.12X 4.00X 19.50			9.610	BB1	1	386447	P16C0394
13	SHELF-LADDER LH	20.000	81.000	17.981	BB2	1	386449	P16C0396
14	SHELF-LADDER RH 91"	20.000	91.000	17.104	BB2	1	386455	P16C0445
15	SHELF-TOP 18"x47.00"	47.000	18.000	10.834	BB2	1	386415	P16C0298
16	SHELF-TOP 18"x73"	73.000	18.000	16.489	BB2	1	386416	P16C0183
17	SHELF-TRAY 18"x23"	23.000	18.000	4.981	BB2	6	386376	SHELF_3_DS
18	SHELF-TRAY 18"x46"	46.000	18.000	9.633	BB2	6	385297	SHELF_1_DS
19	SHELF-TRAY 18"x46"	46.000	18.000	9.633	BB2	6	385297	SHELF_2_DS
20	SUPPORT ASM-LADDER			0.447	ZA	4	385200	385200
21	UNISTRUT ASM-DOUBLE			9.602	ZA	2	386445	386445
22	UNISTRUT ASM-SINGLE			6.302	ZA	2	386446	386446
23	WASHER-FENDER .25 SST			0.009	E2	8	820746	820746
24	WASHER-FLAT .38 D-SHAPED			0.007	E2	82	816154	816154
25	WASHER-LOCK .25 SST			0.002	E2	44	803630	803630

ITEM NUMBER
386454

NOTE:
FOR OPTIONAL SHELF LINER KIT,
USE #386468



END VIEW

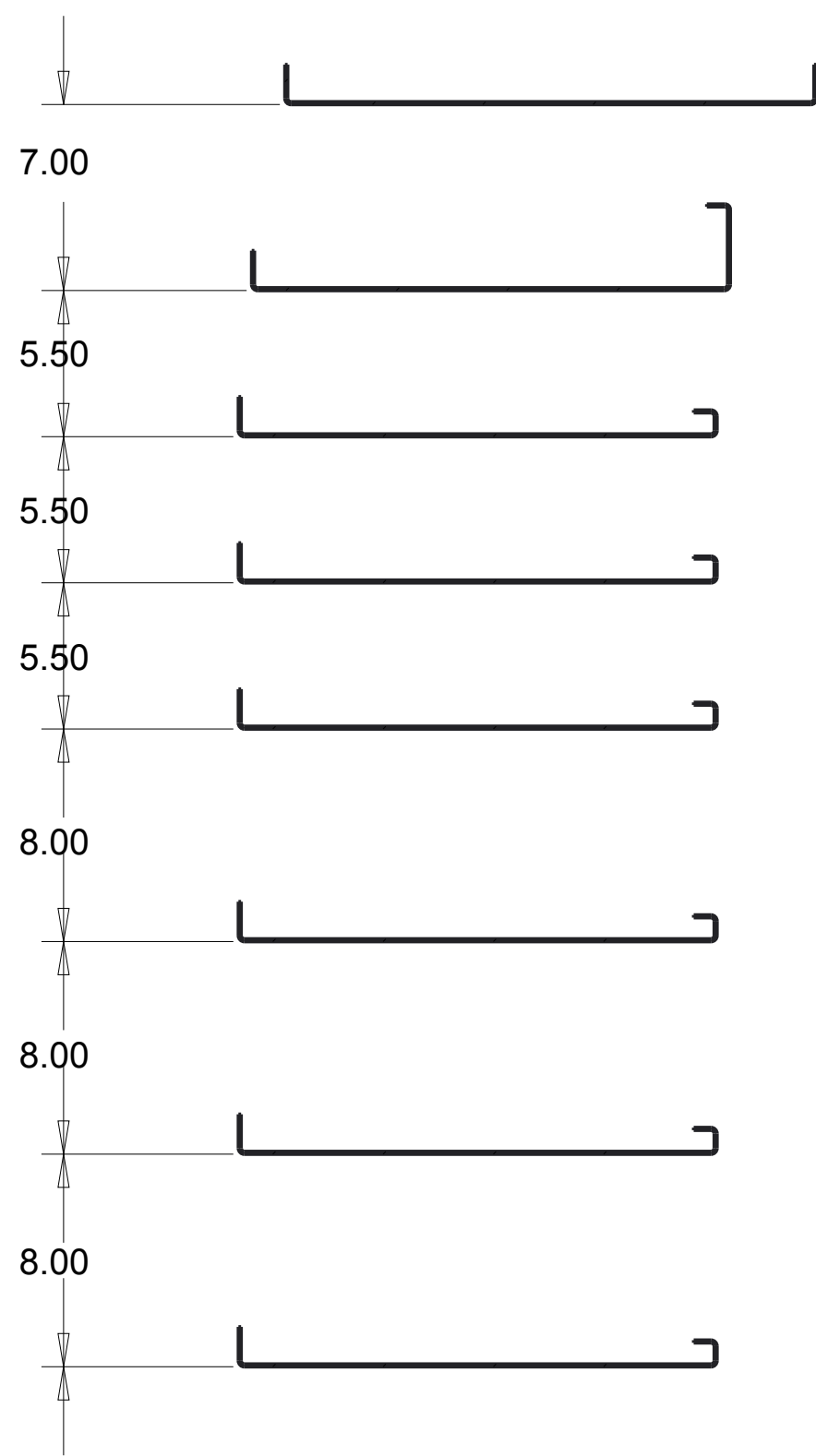
MODEL DESIGNED FOR USE WITH OEM BULKHEAD. AFTERMARKET BULKHEADS MAY REQUIRE ADITONAL MODIFICAITON.

NUMBER	SPRINTER	WEIGHT	134.923	TOLERANCE UNLESS OTHERWISE SPECIFIED	
ROUTING	FINAL	MATL CODE	ZA	.XX=+/- .060	
ITEM NO	386454	SHAPE DESC		.XXX=+/- .030	
RAW_MATL		HRS	0.000	DESCRIPTION	vthackney.com hackney.com kidron.com vtvisioncomms.com
DRAWN BY	ALB	DATE	24-Aug-16		
APPROVED BY		DATE			
SUPERSEDES		SUPERSEDED BY		SCALE	0.028
				DWG NAME	P16C0400 Sheet 1 of 4



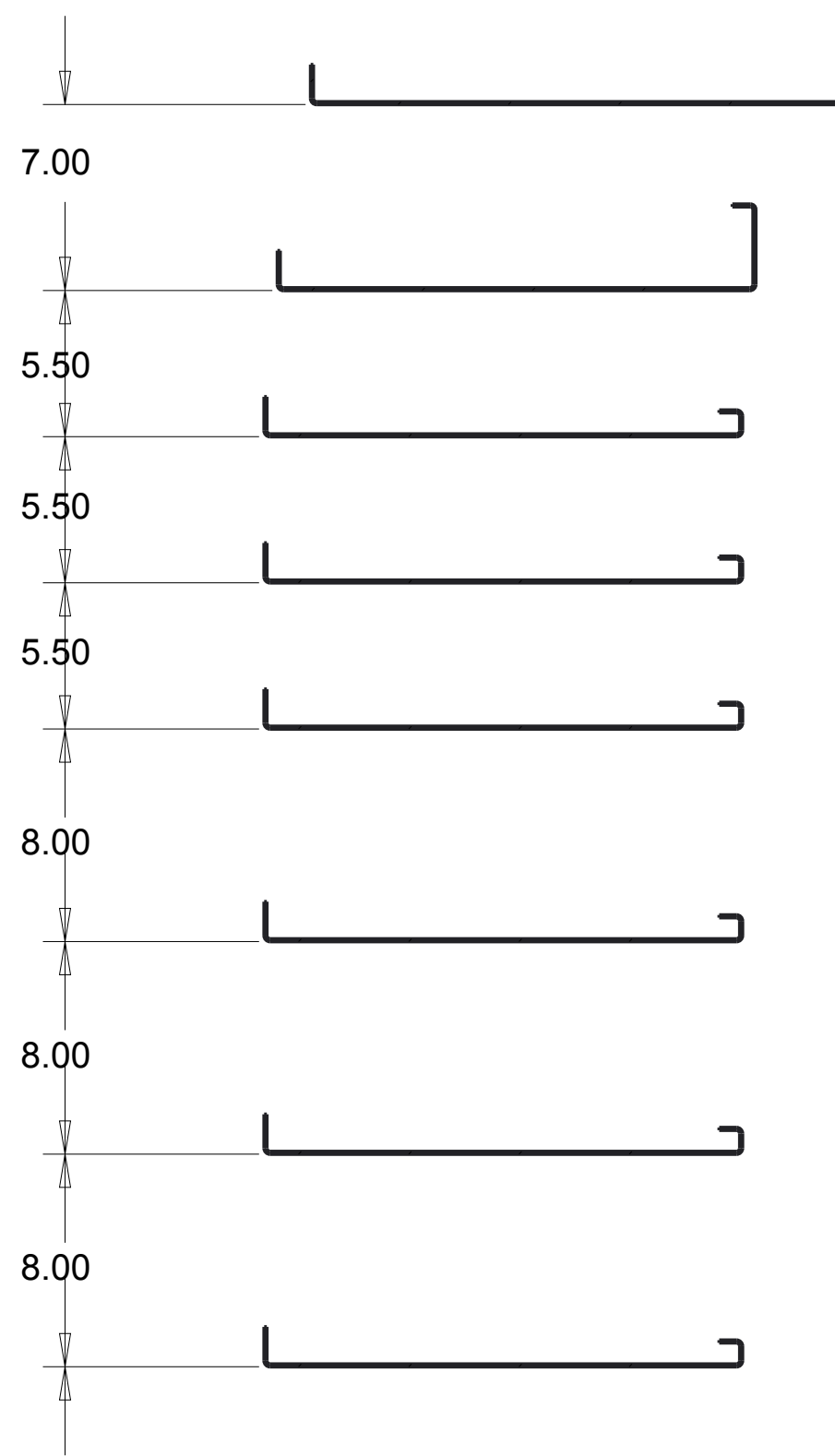
THIS PRINT AND ALL RIGHTS TO THE DESIGN AND DETAIL THEREON ARE THE PROPERTY OF VT HACKNEY AND IS LOANED TO THE RECIPIENT SUBJECT TO RETURN UPON DEMAND. ITS CONTENTS ARE CONFIDENTIAL AND MUST NOT BE COPIED OR SUBMITTED TO OUTSIDE PARTIES FOR USE OR EXAMINATION. COPYRIGHT 2016 VT HACKNEY A COMPANY OF VT SYSTEMS

REV	REVISION DESCRIPTION	ECN	DATE	INITIALS



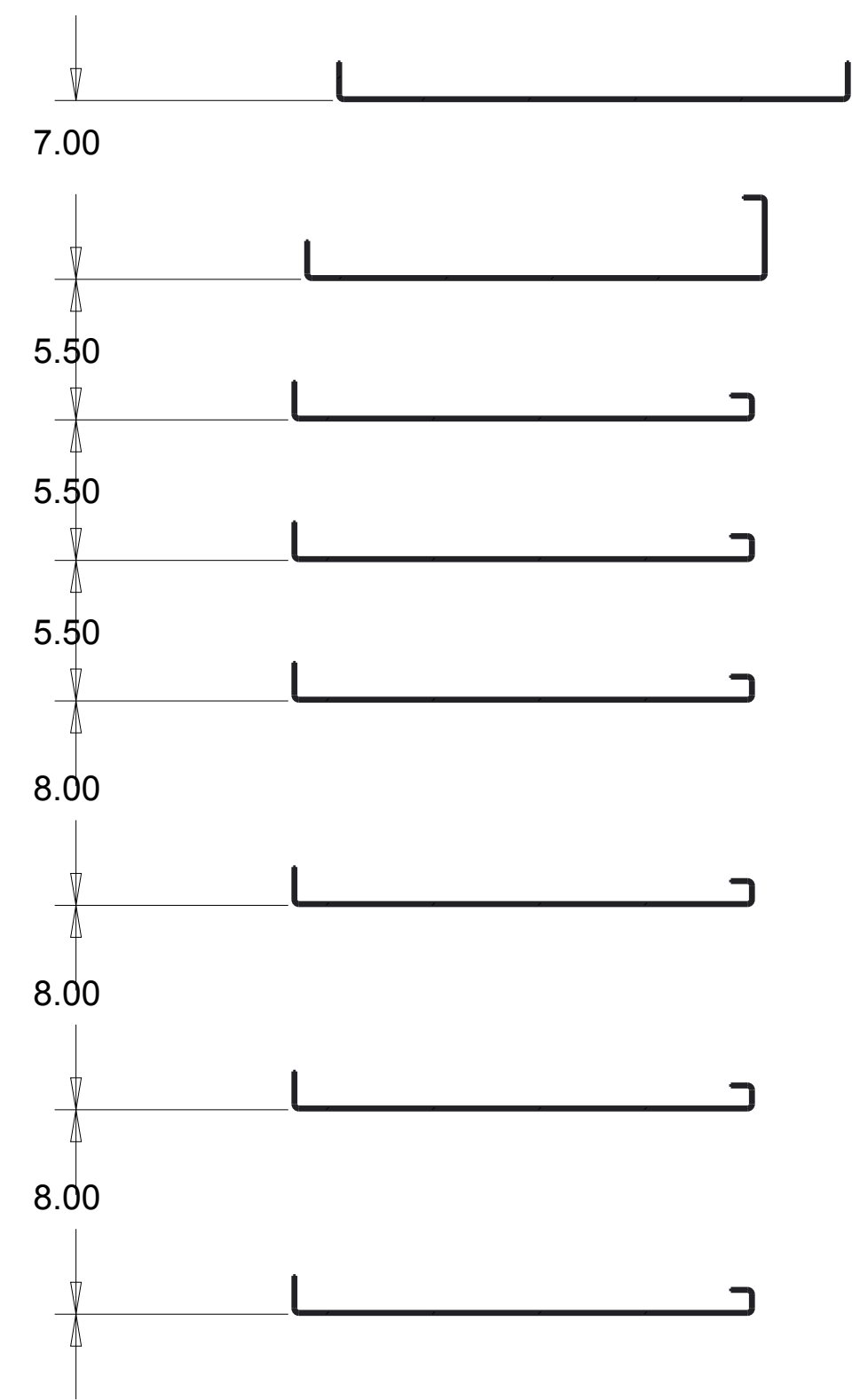
17.50 TO FLOOR

SECTION A-A
SCALE 0.150



17.50 TO FLOOR





SECTION B-B
SCALE 0.150



17.50 TO FLOOR

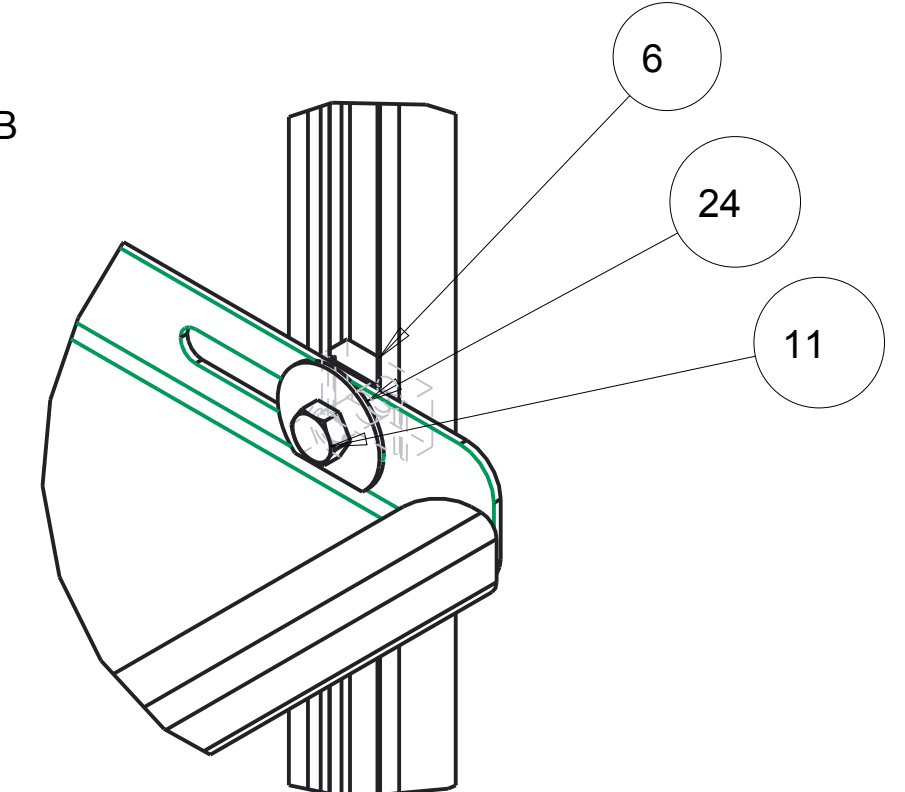
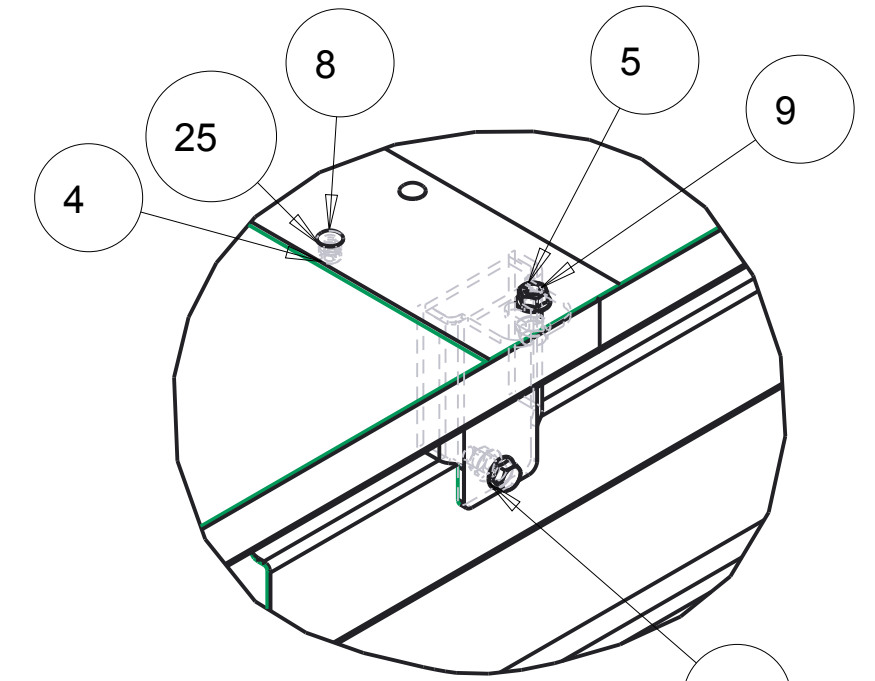
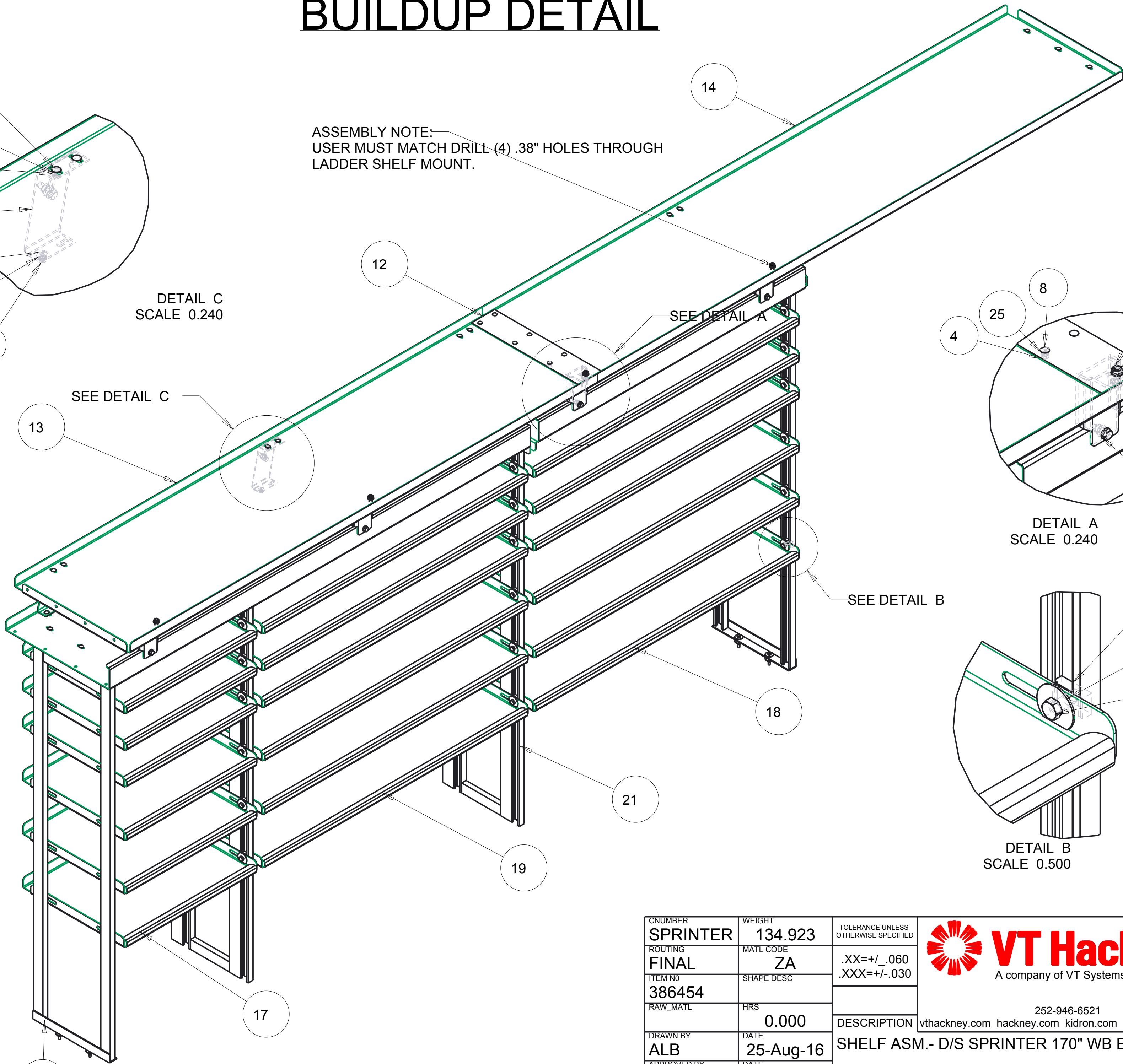
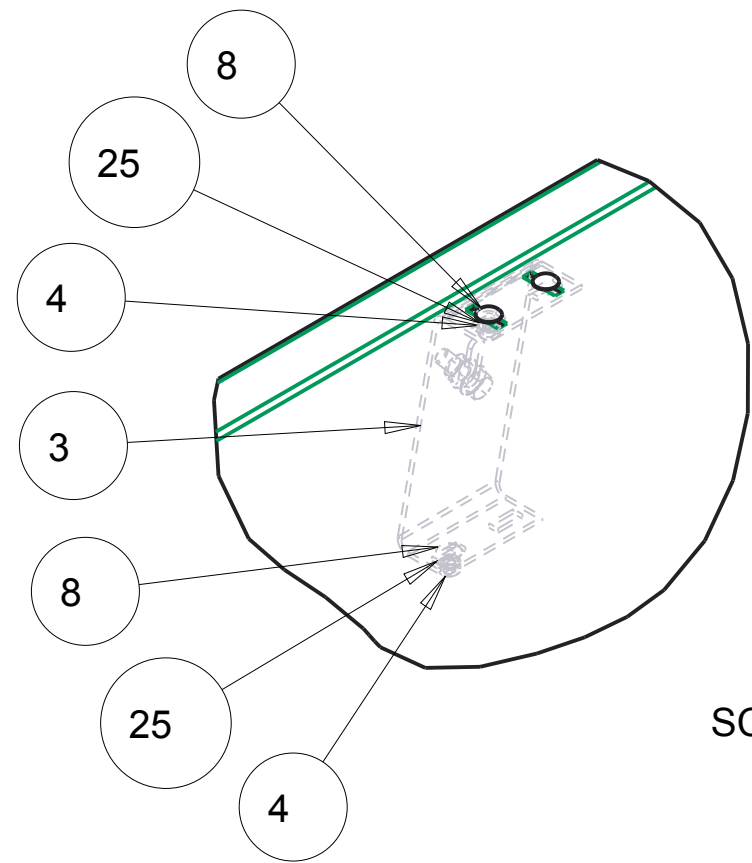
SECTION C-C
SCALE 0.150



CNUMBER	WEIGHT	TOLERANCE UNLESS OTHERWISE SPECIFIED	 VT Hackney A company of VT Systems	  
ROUTING	MATL CODE	.XX=+/- .060 .XXX=+/- .030		
FINAL	ZA		252-946-6521 vtackney.com hackney.com kidron.com vtvisioncomms.com	
ITEM NO	SHAPE DESC			
386454			DESCRIPTION SHELF ASM.- D/S SPRINTER 170" WB EXT. HIGH ROOF 46-46-23	
RAW_MATL	HRS			
	0.000		SCALE 0.028	
DRAWN BY	DATE			
ALB	24-Aug-16		DWG NAME P16C0400 Sheet 2 of 4	
APPROVED BY	DATE			
SUPERSEDES	SUPERSEDED BY			

BUILDUP DETAIL

ASSEMBLY NOTE:
USER MUST MATCH DRILL (4) .38" HOLES THROUGH
LADDER SHELF MOUNT.



CNUMBER	WEIGHT	TOLERANCE UNLESS OTHERWISE SPECIFIED
SPRINTER	134.923	
ROUTING	MATL CODE	
FINAL	ZA	.XX=+/- .060 .XXX=+/- .030
ITEM NO	SHAPE DESC	
386454		
RAW_MATL	HRS	
	0.000	
DRAWN BY	DATE	DESCRIPTION
ALB	25-Aug-16	vtackney.com hackney.com kidron.com vtvisioncomms.com
APPROVED BY	DATE	
SUPERSEDES	SUPERSEDED BY	SCALE
		0.028
		DWG NAME



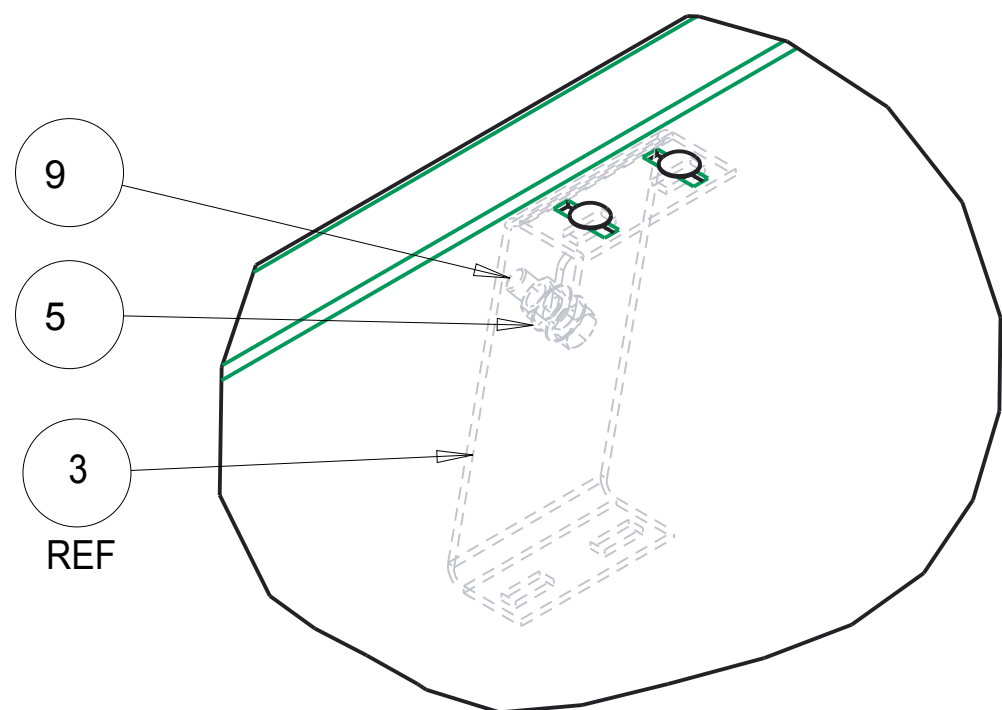
252-946-6521
vtackney.com hackney.com kidron.com vtvisioncomms.com

DESCRIPTION SHELF ASM.- D/S SPRINTER 170" WB EXT. HIGH ROOF 46-46-23

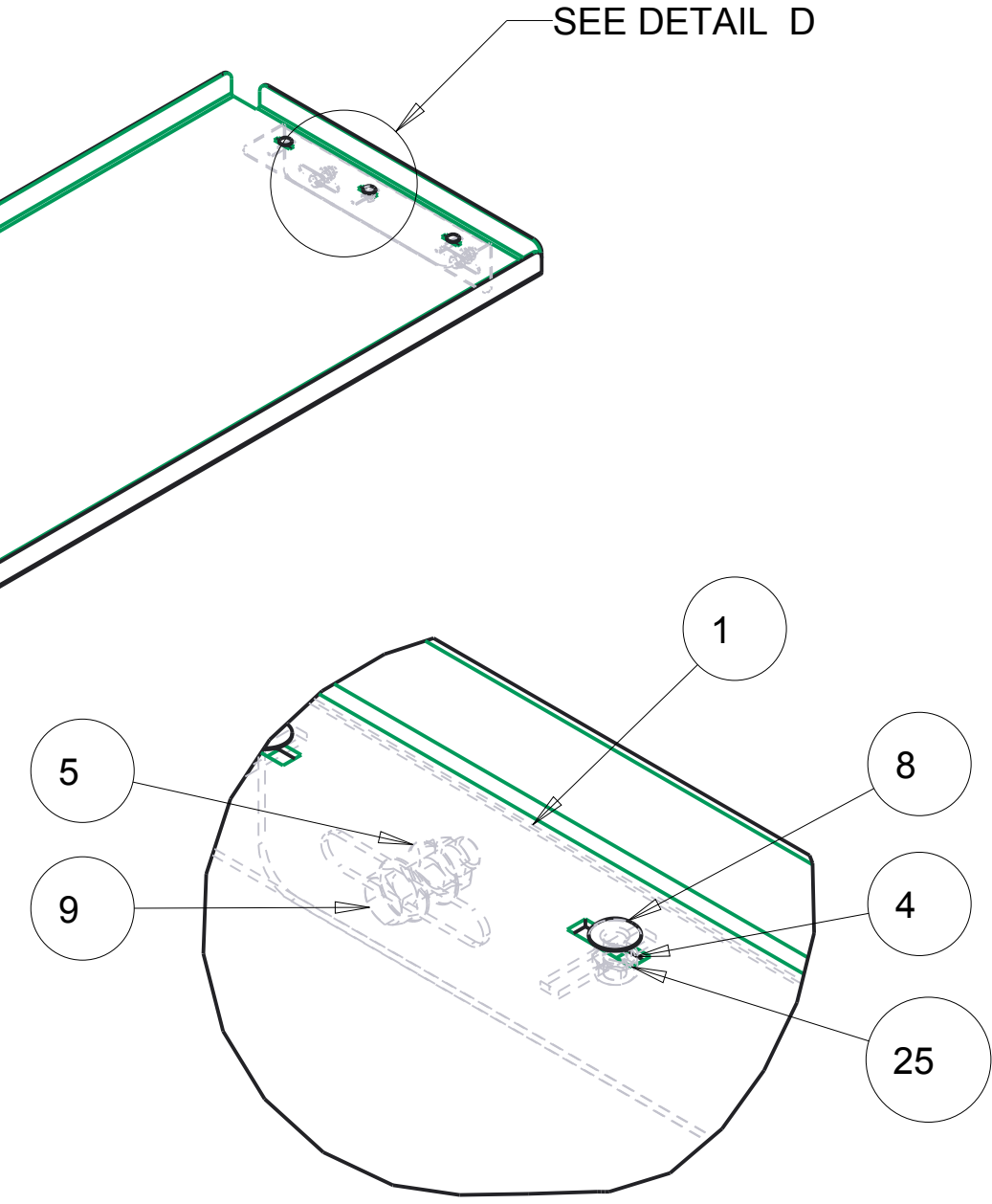
ATTACHMENT DETAIL

INSTALLATION NOTES:

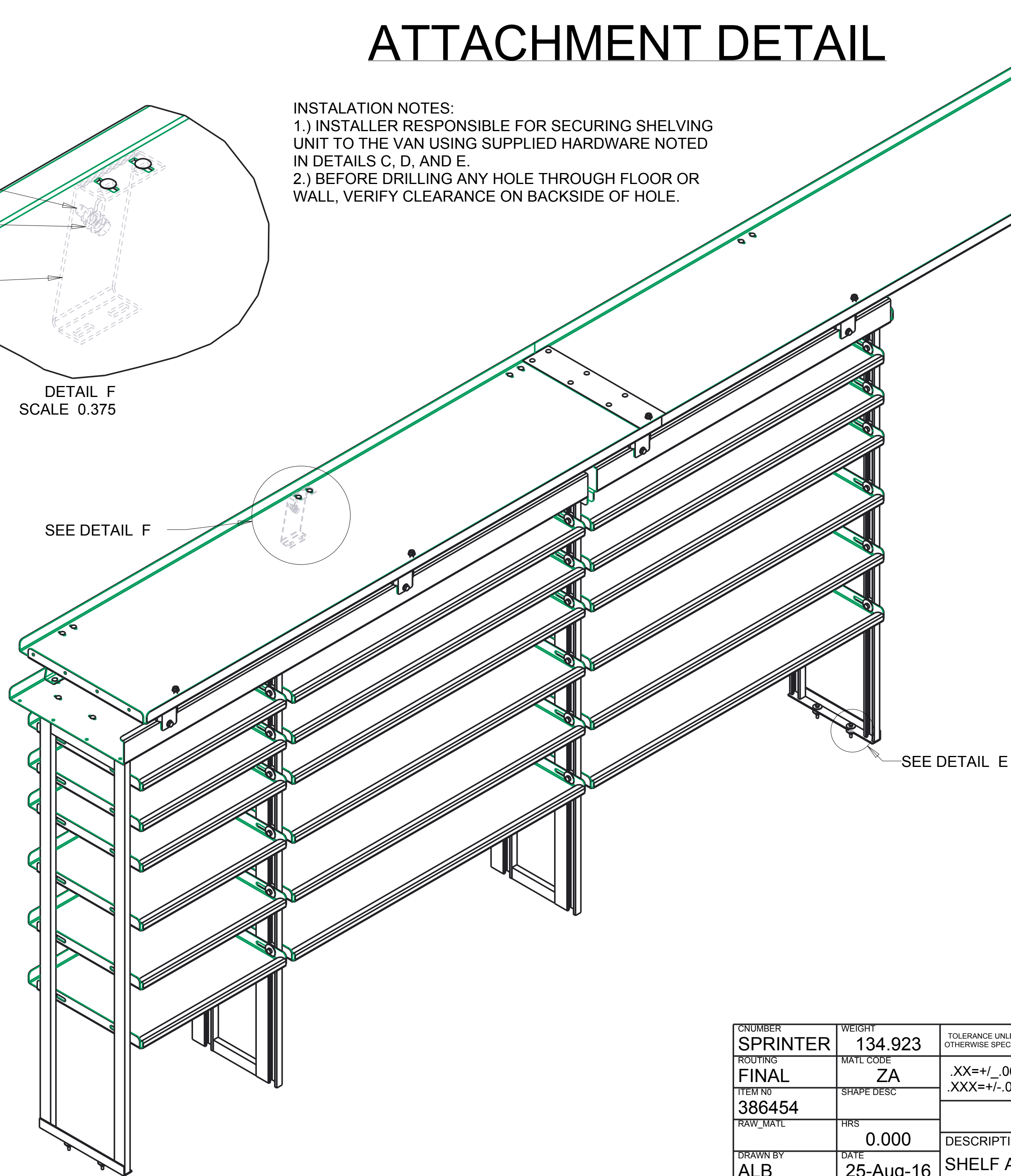
- 1.) INSTALLER RESPONSIBLE FOR SECURING SHELVING UNIT TO THE VAN USING SUPPLIED HARDWARE NOTED IN DETAILS C, D, AND E.
- 2.) BEFORE DRILLING ANY HOLE THROUGH FLOOR OR WALL, VERIFY CLEARANCE ON BACKSIDE OF HOLE.



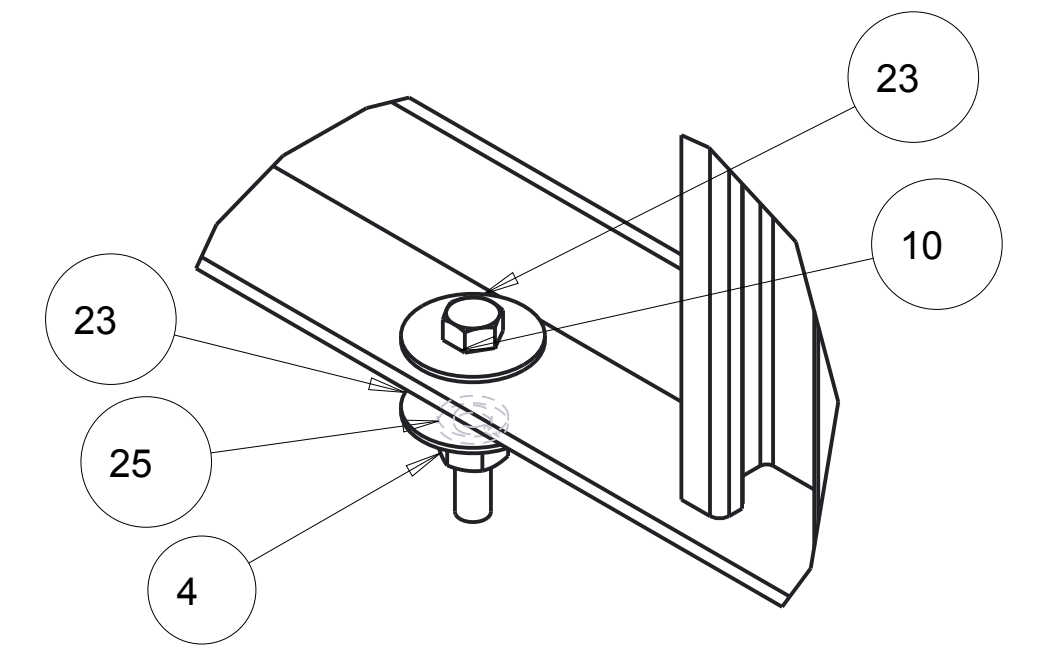
DETAIL F
SCALE 0.375





DETAIL D
SCALE 0.500



SCALE 0.120



DETAIL E
SCALE 0.750

NUMBER SPRINTER	WEIGHT 134.923	TOLERANCE UNLESS OTHERWISE SPECIFIED	 VT Hackney <i>Hackney</i> A company of VT Systems 
ROUTING FINAL	MATL CODE ZA	.XX=+/- .060 .XXX=+/- .030	
ITEM NO 386454	SHAPE DESC		252-946-6521 vtackney.com hackney.com kidron.com vtvisioncomms.com VisionComms
RAW_MATL	HRS 0.000	DESCRIPTION	
DRAWN BY ALB	DATE 25-Aug-16	SHELF ASM.- D/S SPRINTER 170" WB EXT. HIGH ROOF 46-46-23	
APPROVED BY	DATE	SCALE 0.028	DWG NAME P16C0400 Sheet 4 of 4
SUPERSEDES	SUPERSEDED BY		