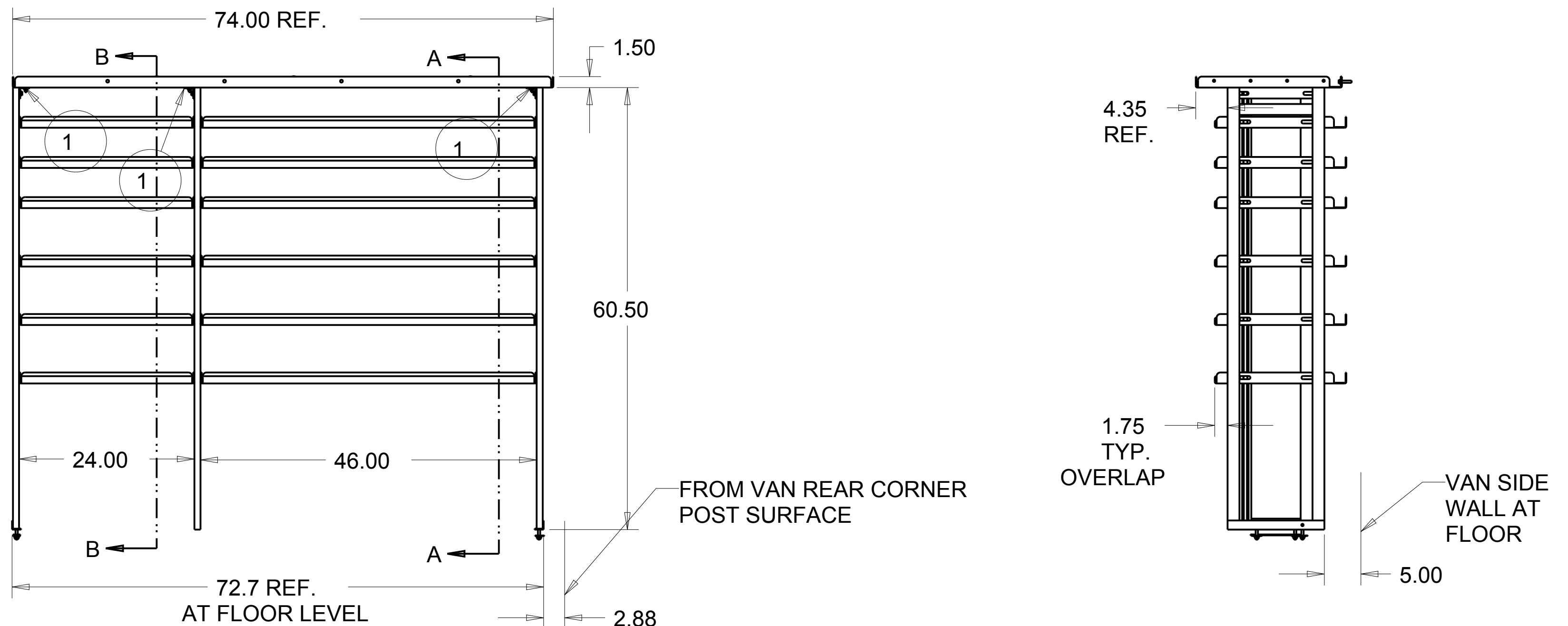


BBL NO.	ITEM DESCRIPTION	LENGTH	WIDTH	WEIGHT	MATL CODE	QTY REQD	ITEM NO.	MODEL NAME
1	ANGLE-.10X1.50X1.50X 13.25	13.250	2.810	0.334	BB2	3	385287	P15C0410
2	BAR-FLAT 1.00X.12X 7.00	7.000		0.239	B12	1	385241	385241
3	NUT-HEX .25 P			0.007	E1	9	1378	1378
4	NUT-HEX M8 x 1.25 SST			0.011	E1	4	820637	820637
5	NUT-UNISTRUT W/O SPRING .38-16			0.086	C4	54	802807	802807
6	SCREW-CARRIAGE .25X .75			0.018	E0	9	1430	1430
7	SCREW-HEX M8-1.25x40MM SST			0.048	E0	7	820664	820664
8	SCREW-HEX.38X .75 GR5	0.750		0.043	E0	54	802804	802804
9	SHELF-TOP 20"x74.00"	74.000	20.000	16.642	BB2	1	385344	P15C0533
10	SHELF-TRAY 18"x24"	24.000	18.000	5.183	BB2	6	385296	P15C0418
11	SHELF-TRAY 18"x46"	46.000	18.000	9.633	BB2	6	385297	P15C0419
12	UNISTRUT ASM-DOUBLE			9.386	ZA	1	385288	385288
13	UNISTRUT ASM-SINGLE			6.188	ZA	1	385289	385289
14	UNISTRUT ASM-SINGLE REAR CS			6.186	ZA	1	385352	385352
15	WASHER-FLAT .38 D-SHAPED			0.007	E2	59	816154	816154
16	WASHER-FLAT M8 SST			0.007	E2	8	820670	820670
17	WASHER-LOCK .25			0.002	E2	9	1372	1372
18	WASHER-LOCK M8 SST			0.004	E2	7	820638	820638



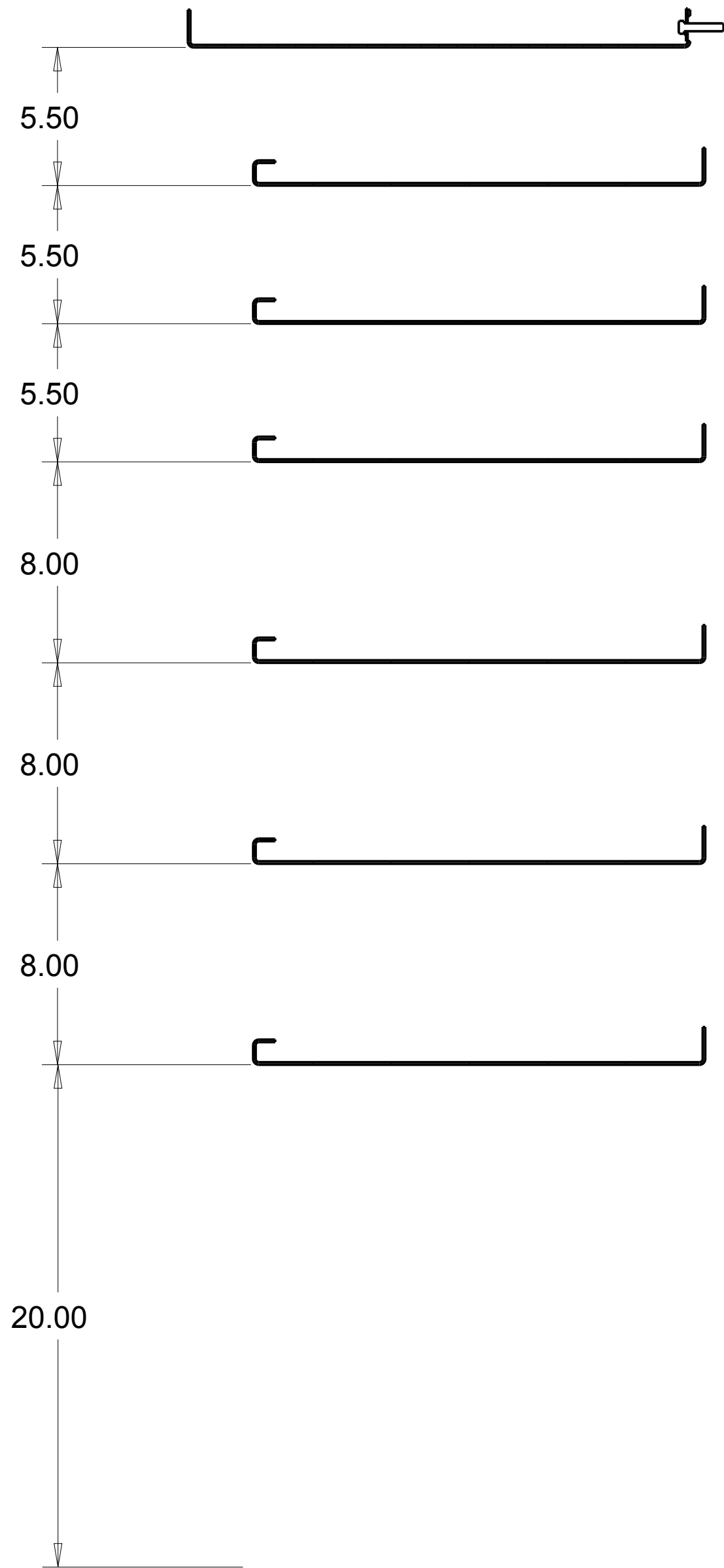
VIEWED FROM AISLE

NUMBER	TRANSIT	WEIGHT	137.905	TOLERANCE UNLESS OTHERWISE SPECIFIED	
ROUTING	FINAL	MATL CODE	ZA	.XX=+/- .060	
ITEM NO	385342	SHAPE DESC		.XXX=+/- .030	
RAW_MATL		HRS	0.000	DESCRIPTION	vtackney.com hackney.com kidron.com vtvisioncomms.com
DRAWN BY	LCS	DATE	11 APR 13	SHELF ASM.-CURBSIDE FORD TRANSIT SHELF OPTIO	
APPROVED BY		DATE		"24-46" 148"WB MED ROOF	
SUPERSEDES		SUPERSEDED BY		SCALE	0.080
				DWG NAME	P15C0523 Sheet 1 of 4

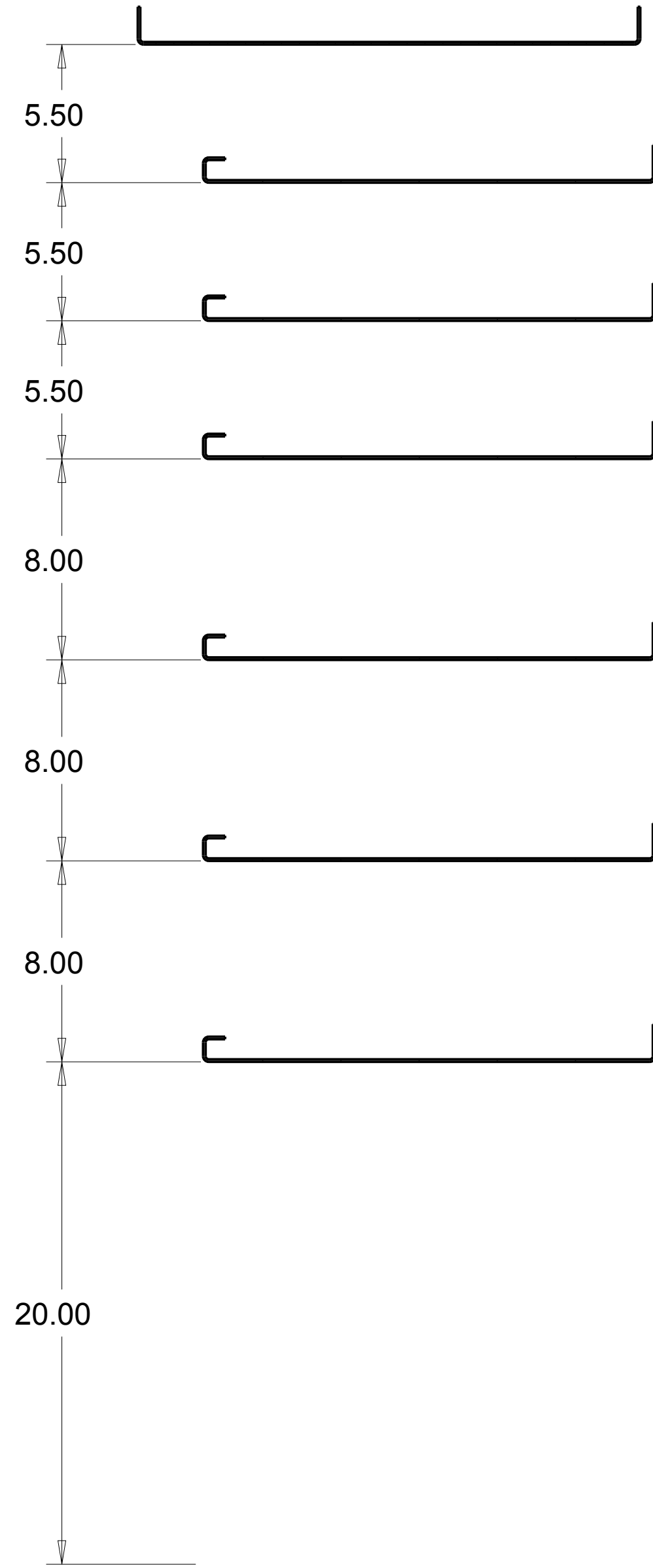


THIS PRINT AND ALL RIGHTS TO THE DESIGN AND DETAIL THEREON ARE THE PROPERTY OF VT HACKNEY AND IS LOANED TO THE RECIPIENT SUBJECT TO RETURN UPON DEMAND. ITS CONTENTS ARE CONFIDENTIAL AND MUST NOT BE COPIED OR SUBMITTED TO OUTSIDE PARTIES FOR USE OR EXAMINATION. COPYRIGHT 2015 VT HACKNEY A COMPANY OF VT SYSTEMS




REV	REVISION DESCRIPTION	ECN	DATE	INITIALS



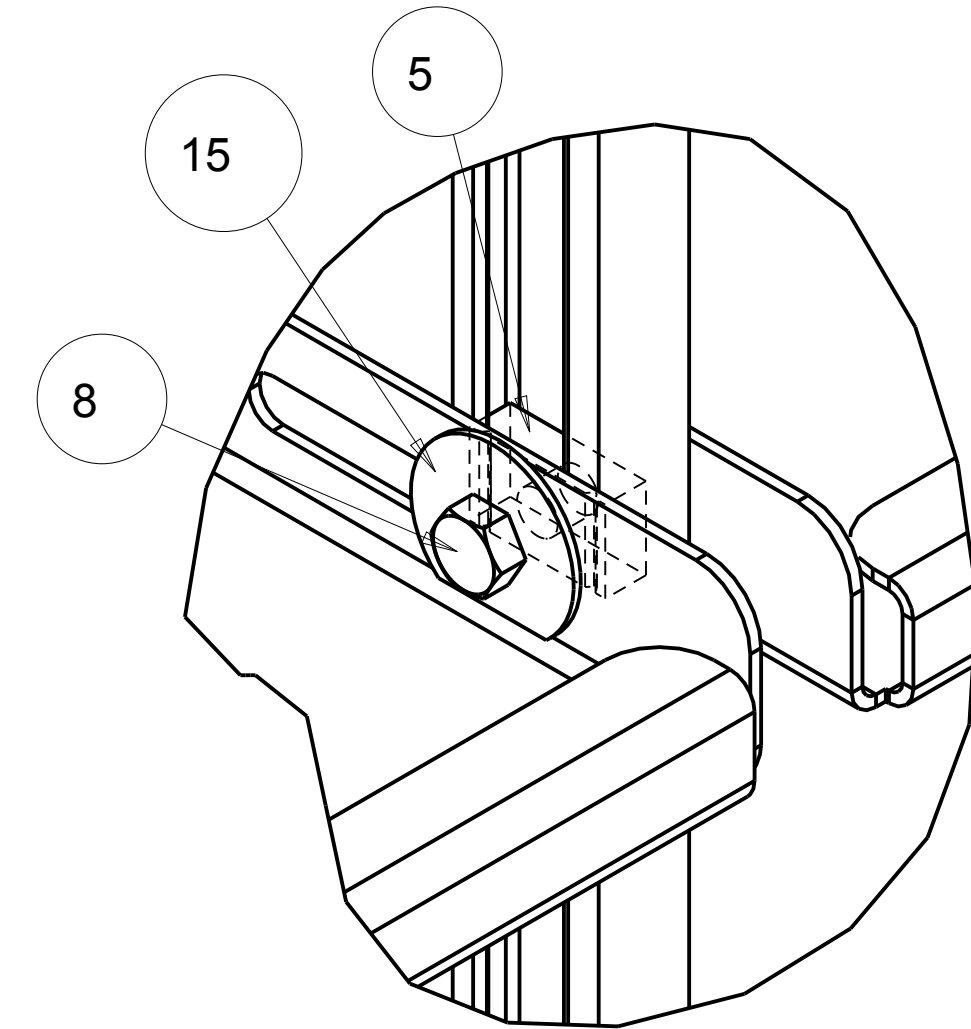
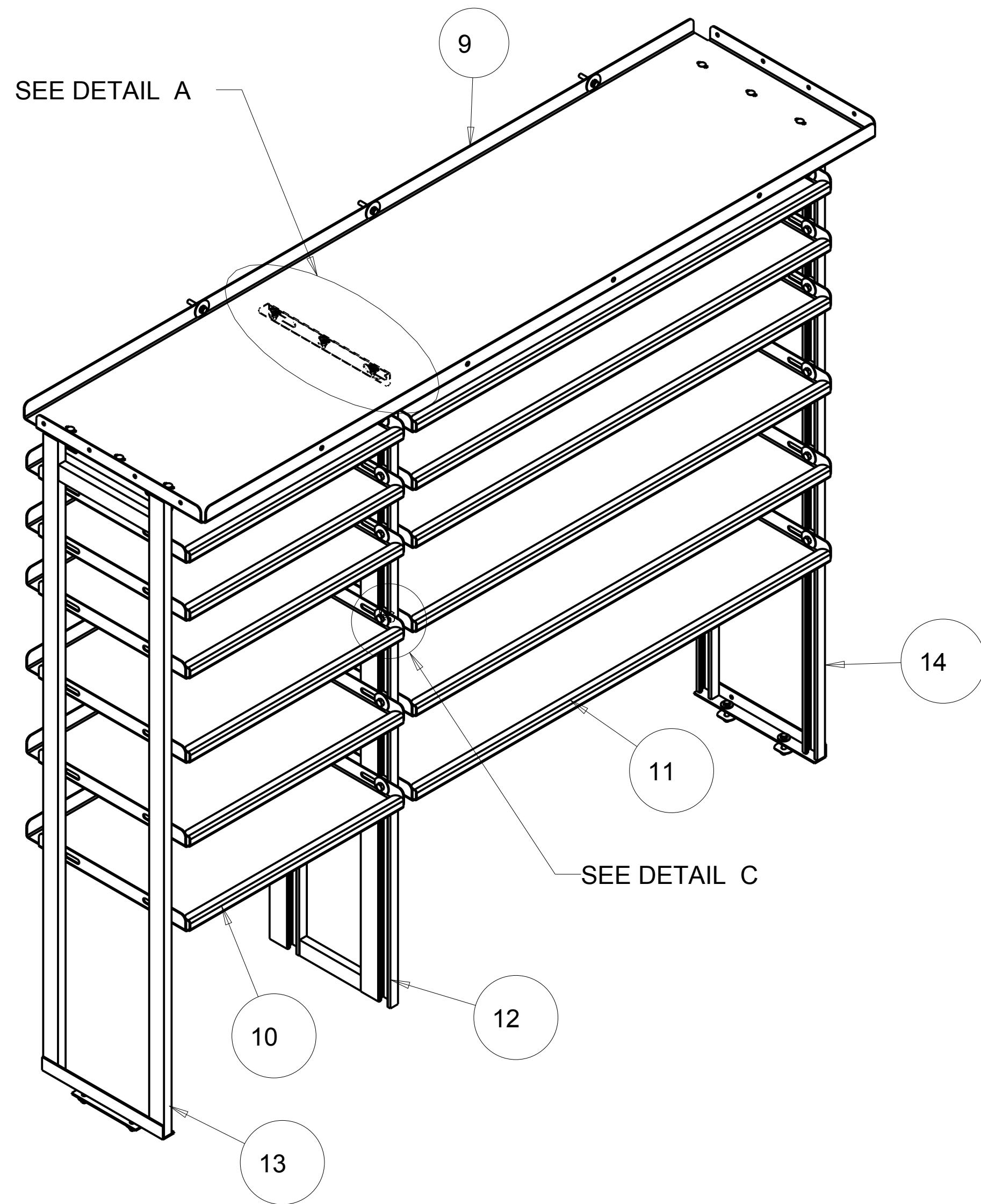
SECTION B-B



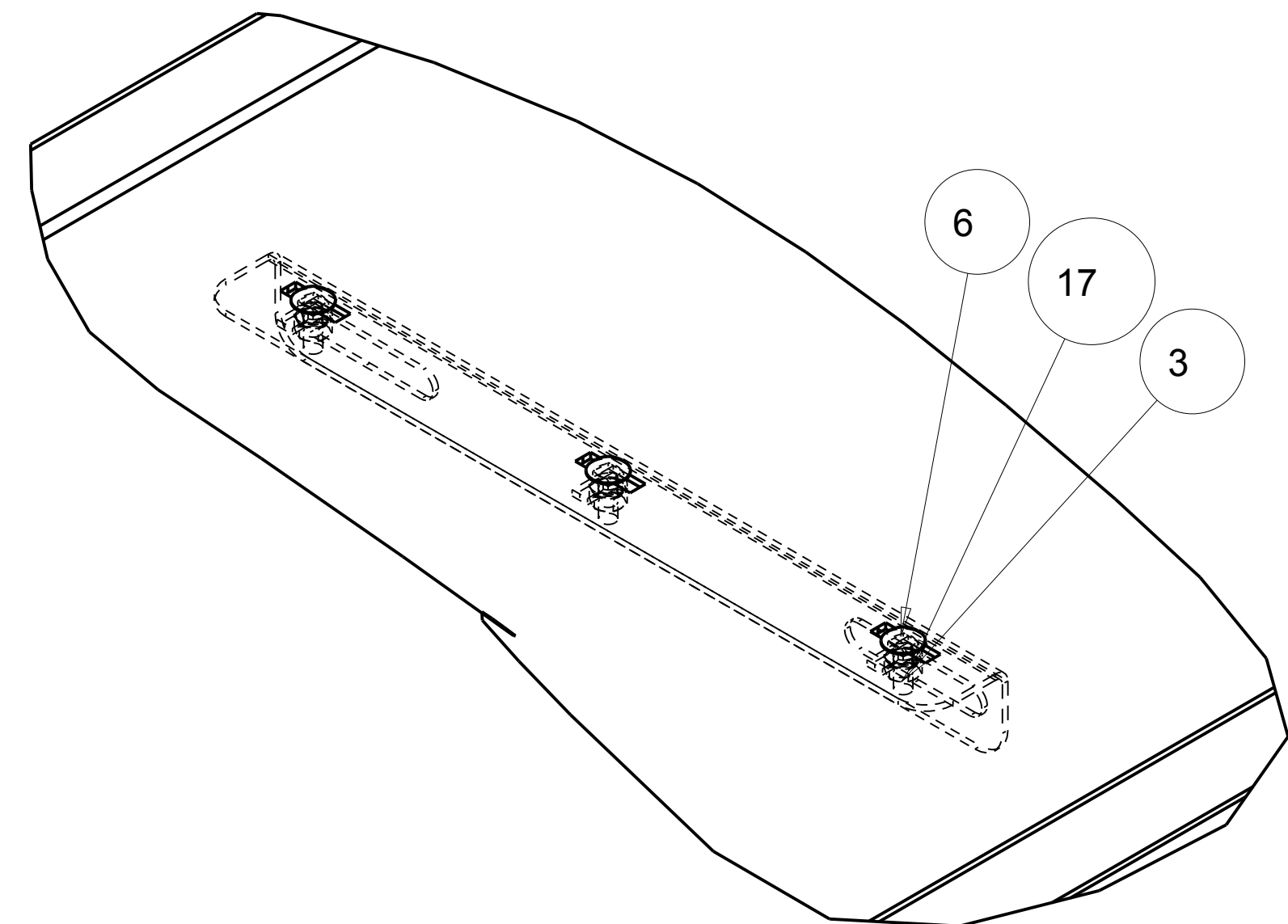
SECTION A-A

NUMBER <b>TRANSIT</b>	WEIGHT <b>137.905</b>	TOLERANCE UNLESS OTHERWISE SPECIFIED	 <b>VT Hackney</b> A company of VT Systems	
ROUTING <b>FINAL</b>	MATL CODE <b>ZA</b>	.XX=+/- .060 .XXX=+/- .030		
ITEM NO <b>385342</b>	SHAPE DESC		252-946-6521 vtackney.com hackney.com kidron.com vtvisioncomms.com	
RAW_MATL	HRS <b>0.000</b>	DESCRIPTION		
DRAWN BY <b>LCS</b>	DATE <b>29-Nov-11</b>	<b>SHELF ASM.-CURBSIDE FORD TRANSIT SHELF OPTIO</b> <b>"24-46" 148"WB MED ROOF</b>		
APPROVED BY	DATE	SCALE <b>0.200</b>	DWG NAME <b>P15C0523 Sheet 2 of 4</b>	
SUPERSEDES	SUPERSEDED BY			



**VisionComms**



TYP. SHELF HARDWARE  
DETAIL C  
SCALE 0.800



DETAIL A  
SCALE 0.500

NUMBER <b>TRANSIT</b>	WEIGHT <b>137.905</b>	TOLERANCE UNLESS OTHERWISE SPECIFIED	 <b>VT Hackney</b> A company of VT Systems	
ROUTING <b>FINAL</b>	MATL CODE <b>ZA</b>	.XX=+/- .060 .XXX=+/- .030		
ITEM NO <b>385342</b>	SHAPE DESC		252-946-6521 vtackney.com hackney.com kidron.com vtvisioncomms.com	
RAW_MATL	HRS <b>0.000</b>	DESCRIPTION		
DRAWN BY <b>LCS</b>	DATE <b>29-Nov-11</b>	<b>SHELF ASM.-CURBSIDE FORD TRANSIT SHELF OPTIO</b> <b>"24-46" 148"WB MED ROOF</b>		
APPROVED BY	DATE	SCALE <b>0.125</b>	DWG NAME <b>P15C0523 Sheet 3 of 4</b>	
SUPERSEDES	SUPERSEDED BY			

**Hackney**

**Kidron**

**VisionComms**

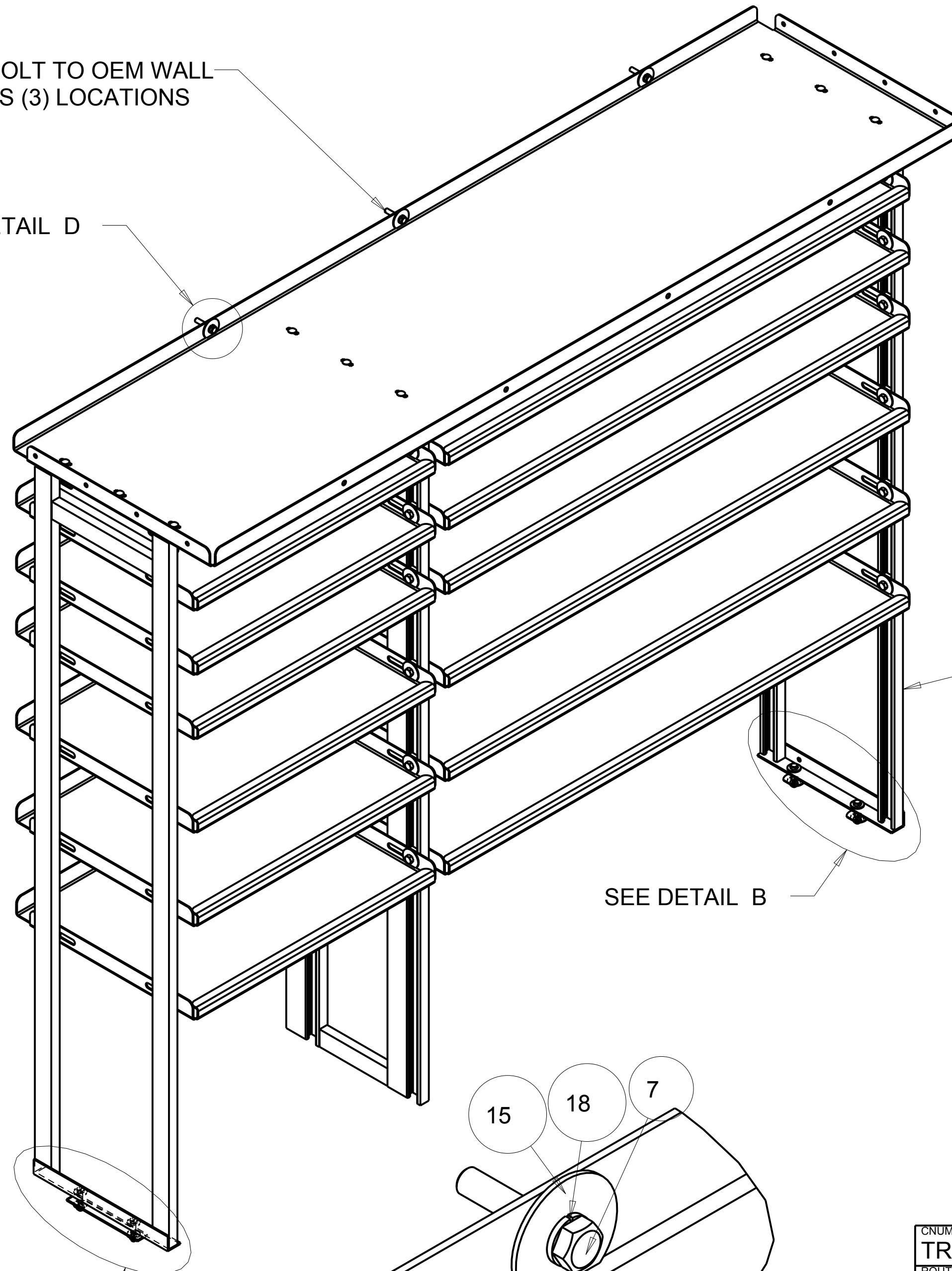
# ATTACHMENT DETAILS

BOLT TO OEM WALL  
INSERTS (3) LOCATIONS

SEE DETAIL D

FRONT OF  
VAN

SEE DETAIL E



REAR OF  
VAN

SEE DETAIL B

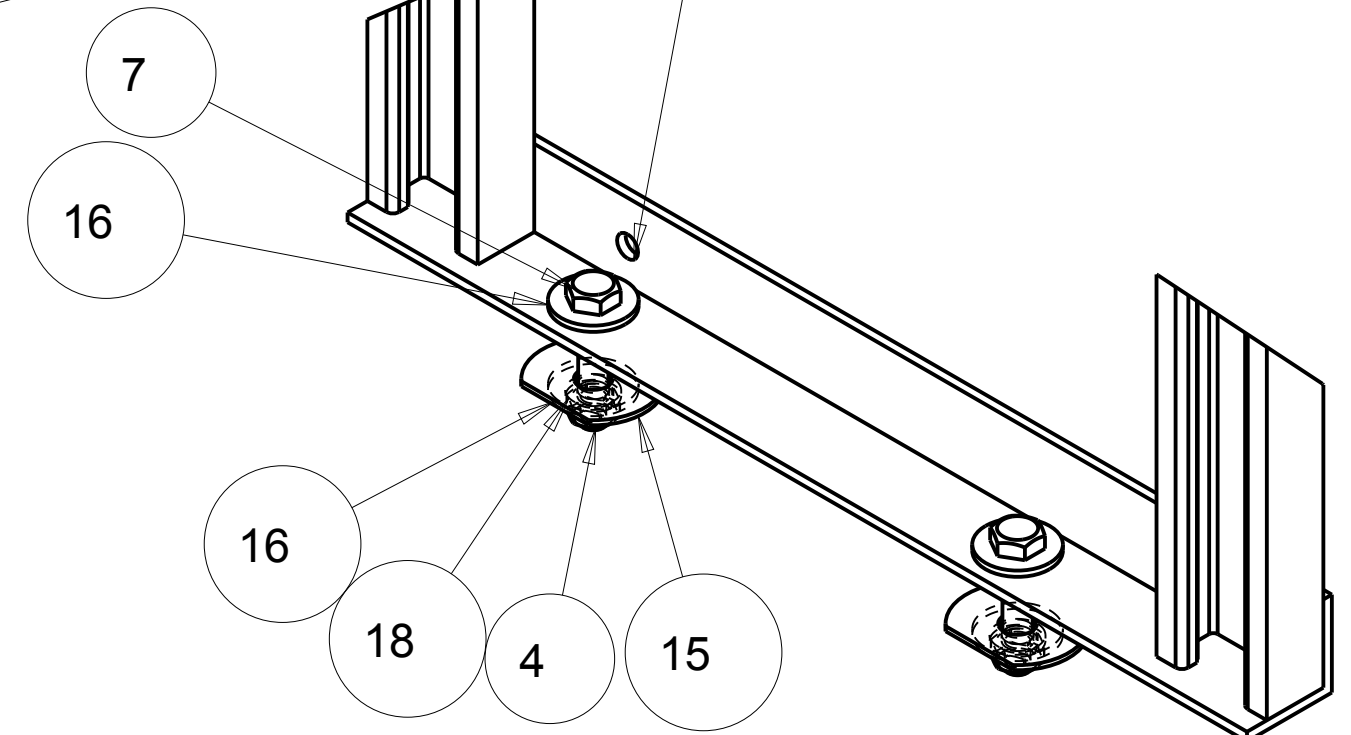
DETAIL D  
SCALE 1.000

INSTALL FLAT BAR  
UNDER FLOOR AS  
REINFORCEMENT

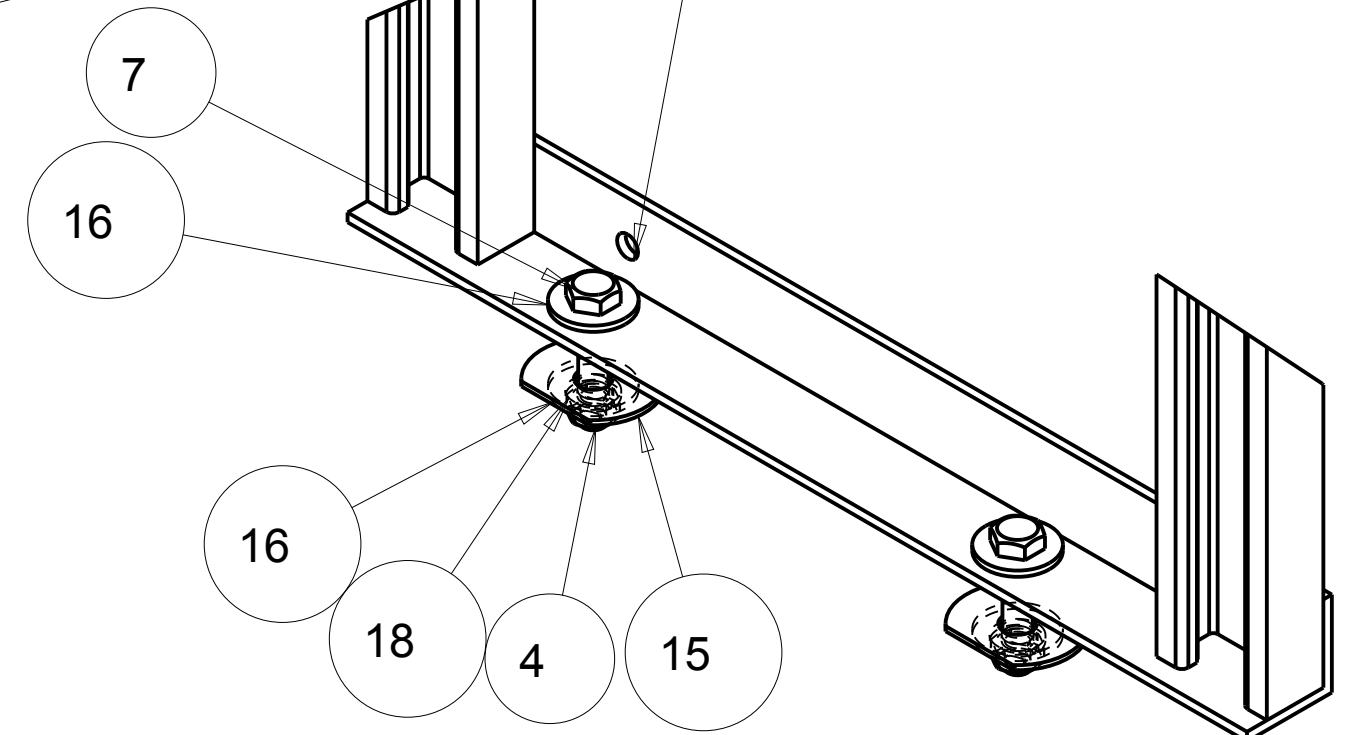
2

DETAIL E  
SCALE 0.500  
TYPICAL BOLT  
THRU FLOOR  
AT FRONT

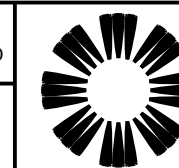
NOTE: VERIFY THIS  
IS THE CORRECT REAR  
SECTION WITH HOLE



DETAIL B  
SCALE 0.500  
TYPICAL BOLT  
THRU FLOOR  
AT REAR



NUMBER <b>TRANSIT</b>	WEIGHT <b>137.905</b>	TOLERANCE UNLESS OTHERWISE SPECIFIED
ROUTING <b>FINAL</b>	MATL CODE <b>ZA</b>	.XX=+/- .060 .XXX=+/- .030
ITEM NO <b>385342</b>	SHAPE DESC	
RAW_MATL	HRS <b>0.000</b>	DESCRIPTION
DRAWN BY <b>LCS</b>	DATE <b>29-Nov-11</b>	<b>SHELF ASM.-CURBSIDE FORD TRANSIT SHELF OPTIO "24-46" 148"WB MED ROOF</b>
APPROVED BY	DATE	
SUPERSEDES	SUPERSEDED BY	SCALE <b>0.150</b>
		DWG NAME



**VT Hackney**  
A company of VT Systems

**Hackney**

**Kidron**

252-946-6521

vthackney.com hackney.com kidron.com vtvisioncomms.com

**VisionComms**