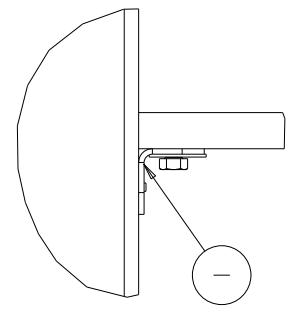
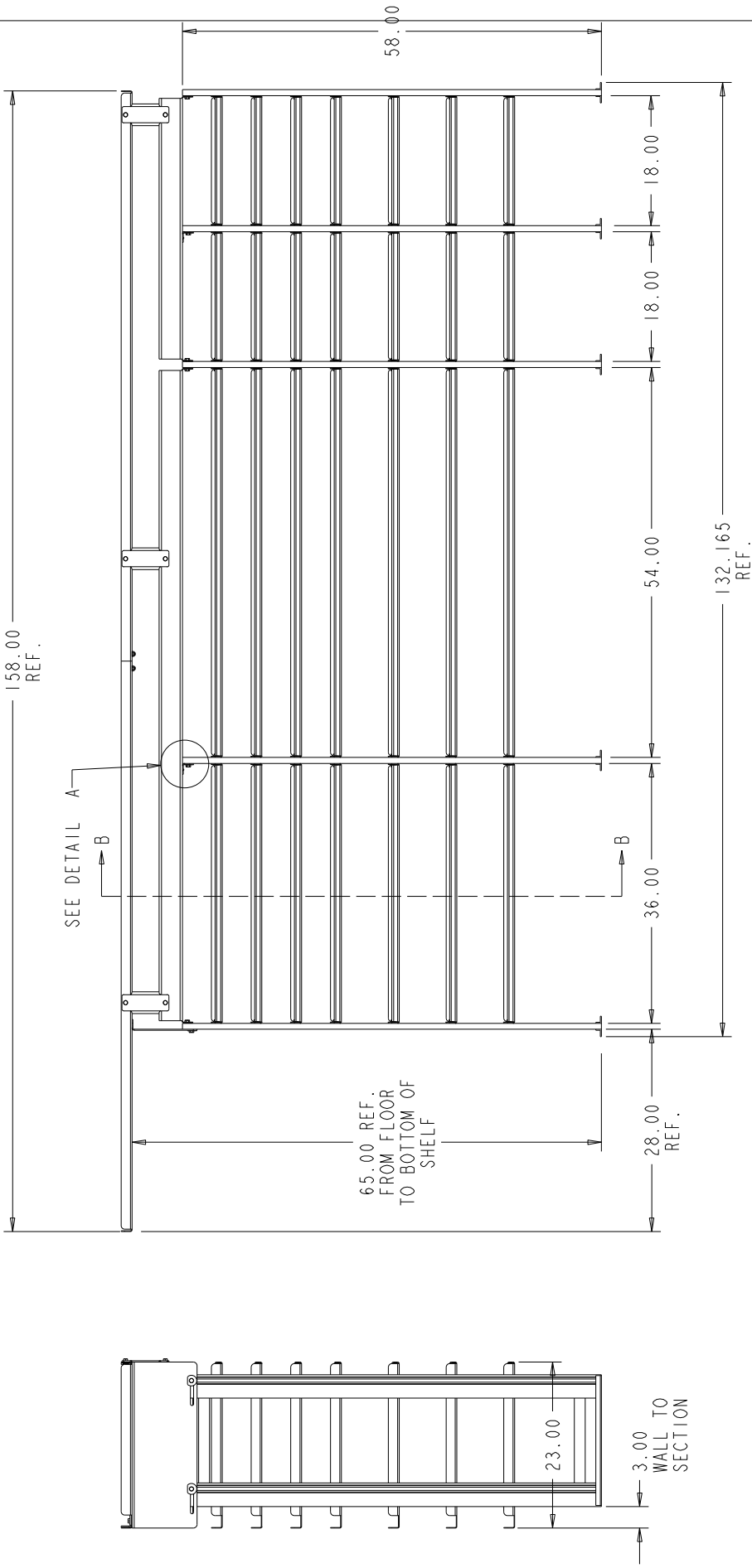


VT Hackney A company of VT Systems		Hackney Kibron		252-946-6521 hackney.com kibron.com vtvisioncomms.com	
VISIONCOMMS		VISIONCOMMS		VISIONCOMMS	
SHELF ASSEMBLY RH - P2000 14' STD		SHELF ASSEMBLY RH - P2000 14' STD		SHELF ASSEMBLY RH - P2000 14' STD	
WEIGHT	389.266	TOLERANCE UNLESS OTHERWISE SPECIFIED	.XX = +/- .060 .XXX = +/- .030	DESCRIPTION	SCALE
PARTS	389.266	MAT. CODE	ZA	DATE	0.125
ROUTING	FINAL	SHAPE DESC		DATE	
ITEM NO.	374530	RHS	0.000	DATE	
TRK/MATL		DATE	15-May-12	DATE	
DRAWN BY	LCS	APPROVED BY		SUPERSEDED BY	
DATE		DATE		DATE	
SUPERSEDES		SUPERSEDES		SUPERSEDES	



DETAIL A
SCALE 0.500

NUMBER	WEIGHT	TOLERANCE UNLESS OTHERWISE SPECIFIED	Hackney
PARTS	389.266	.XX = +/- .060 .XXX = +/- .030	VT Hackney
ROUTING	MATL CODE		A company of VT Systems
FINAL	ZA		Kibron
ITEM NO	SHRPE DESC		252-946-6521
374530			hackney.com kibron.com vtvisioncomms.com
TRM/MATL	RHS	DESCRIPTION	VISIONCOMMS
	0.000		
DRAWN BY	DATE		
LCS	15-May-12		
APPROVED BY	DATE		
SUPERSEDES	SUPERSEDED BY	SCALE	UNIT MADE
		0.100	
			PI2C0312 Sheet 2 of 4

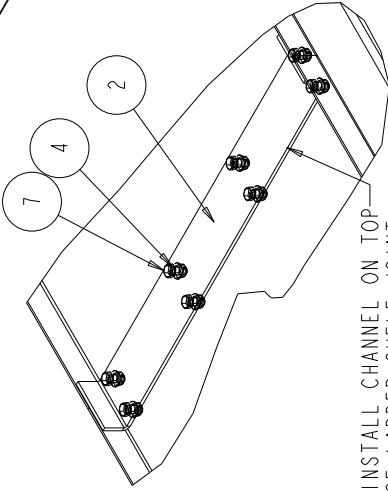
SHELF ASSEMBLY RH - P2000 14' STD

ATTACHMENT DETAILS

NOTES:
 CUSTOMER IS RESPONSIBLE FOR ADEQUATE ATTACHMENT TO BODY.
 ATTACHMENT HARDWARE IF REQUIRED IS TO BE PROVIDED BY THE CUSTOMER.

ADEQUATELY ATTACH EACH LADDER AND
 PIPE SHELF FLANGE TO WALL OF BODY.
 ATTACHMENT METHOD WILL VARY DUE TO
 BODY DESIGN, 24" CENTERS OR LESS

SEE DETAIL E



INSTALL CHANNEL ON TOP
 OF LADDER SHELF JOINT,
 CLAMP AND DRILL,
 INSTALL SCREW AND NUT.

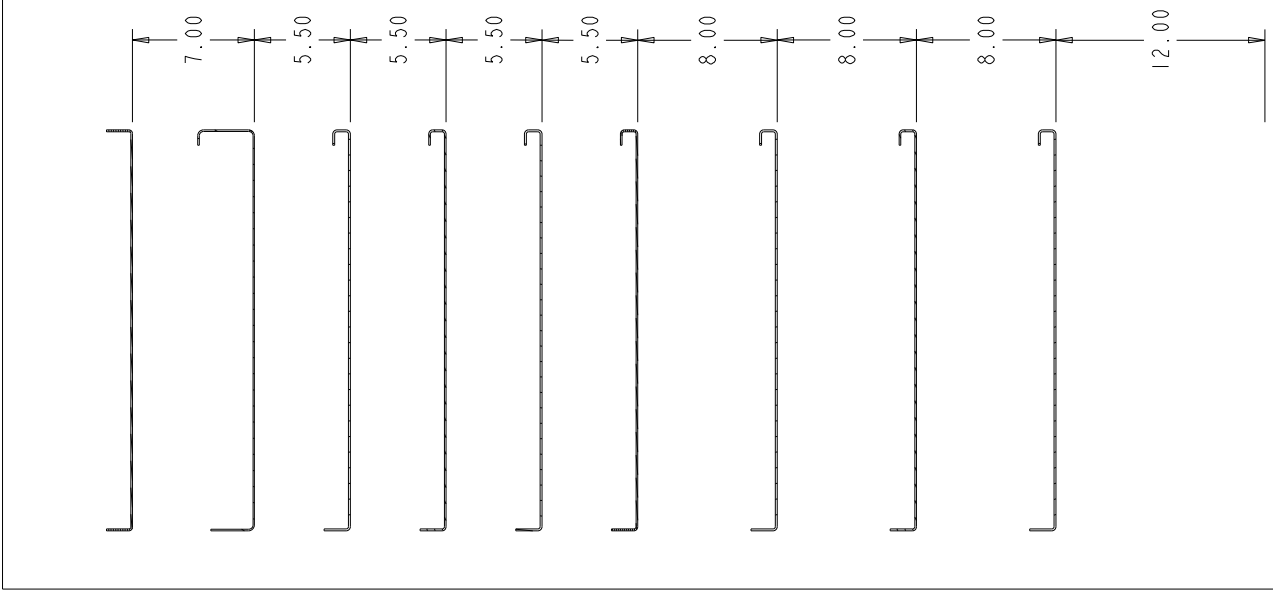
DETAIL E
 SCALE 0.250

SCREW, RIVET OR
 WELD TO FLOOR

ADEQUATELY ATTACH EACH
 UNISTRUT SECTION TO FLOOR
 SURFACE - BOLT THRU OR WELD

NUMBER	WEIGHT	TOLERANCE UNLESS OTHERWISE SPECIFIED	Hackney
PARTS	389.266	.XX = +/- .060	VT Hackney
ROUTING	MATL CODE	.XXX = +/- .030	A company of VT Systems
FINAL	ZA		Kibron
ITEM #	SURF# DESC		252-946-6521
374530			hackney.com kibron.com vtvisioncomms.com
TRK/MATL	TRK	DESCRIPTION	VISIONCOMMS
	0.000		
DRAWN BY	DATE		
LCS	15-May-12		
APPROVED BY	DATE		
SUPERSEDES	SUPERSEDED BY	SCALE	
		0.125	
		TRG-TRG	

BBL NO.	ITEM DESCRIPTION	LENGTH	WIDTH	WEIGHT	MATL CODE	QTY REQD	ITEM NO.	ITEM NUMBER	MODEL NAME
1	ANGLE-SUPPORT	18.250		0.583	BB1	2	342341	374530	342341
2	CHANNEL - JOINT			1.361	BC2	1	361212		361212
3	CHANNEL-LADDER SUPPORT			0.421	BC2	3	342970		P9C0845
4	NUT-HEX 0.38 LK			0.018	E1	14	1485		1485
5	NUT-UNISTRUT 3/8-16			0.086	C4	126	802807		802807
6	RIVET-SSD64BS .19	0.750		0.003	E3	6	30710		30710
7	SCREW-HEX.38X.75 GR5			0.043	E0	140	802804		802804
8	SHELF END - 14'	23.000	10.250	2.818	BB1	1	342553		342553
9	SHELF-BAY 1	23.000	36.000	9.493	BB2	7	315739		SHELF_RH_BAY1
10	SHELF-BAY 2	23.000	54.000	14.006	BB2	7	313475		SHELF_RH_BAY2
11	SHELF-BAY 3	23.000	18.000	4.979	BB2	7	315738		SHELF_RH_BAY3
12	SHELF-BAY 4	23.000	18.000	4.979	BB2	7	315738		SHELF_RH_BAY4
13	SHELF-LADDER LH	23.000	79.000	19.926	BB2	1	374527		LADDER_LH
14	SHELF-LADDER RH	23.000	79.000	19.926	BB2	1	374528		LADDER_RH
15	SHELF-PIPE LH	23.000	90.750	20.803	BB3	1	374526		PIPE_LH
16	SHELF-PIPE RH	23.000	36.750	8.646	BB3	1	374459		PIPE_RH
17	UNISTRUT ASM-END			7.946	ZA	1	367301		367301
18	UNISTRUT ASM-MIDDLE			11.577	ZA	4	324368		324368
19	WASHER-FLAT .38 D-SHAPED			0.007	E2	126	816154		816154



THIS PRINT AND ALL RIGHTS TO THE DESIGN AND DETAIL THEREON ARE THE PROPERTY OF VT HACKNEY AND IS LOANED TO THE RECIPIENT SUBJECT TO RETURN UPON DEMAND. ITS CONTENTS ARE CONFIDENTIAL AND MUST NOT BE COPIED OR SUBMITTED TO OUTSIDE PARTIES FOR USE OR EXAMINATION. COPYRIGHT 2012 VT HACKNEY A COMPANY OF VT SYSTEMS

CHUBBER NUMBER	WEIGHT	TOLENANCE UNLESS OTHERWISE SPECIFIED	VT HACKNEY	Hackney
PARTS	389.266	.XX = +/- .060	VT HACKNEY	Kibron
ROUTING	MATL CODE	XXX = +/- .030	A company of VT Systems	252-946-8521
FINAL	ZA		hackney.com	vtvisioncomms.com
ITEM NO.	SHAPE DESC		vtvisioncomms.com	visioncomms.com
374530				
DRW/MATL	THS	DESCRIPTION		
LCS	0.000			
APPROVED BY	DATE			
	15-May-12			
SUPERSEDES	SUPERSEDED BY	SCALE		
		0.200		

REV	REMOVE FLOOR ANGLE	ECN	DATE	INITIALS
A			10 SEP 21	LRE
REV	REVISION DESCRIPTION	ECN	DATE	INITIALS