

WEIGHT	346.908	TOLERANCE UNLESS OTHERWISE SPECIFIED	
PARTS	MAT. CODE	XX = +/- .060	
ROUTING	ZA	XXX = +/- .030	
FINAL	SHAPE DESC		
ITEM NO			
374467			
RAW/MATL			
DESCRIPTION			
DATE			
09-Mar-12			
APPROVED BY			
SUPERSEDES			

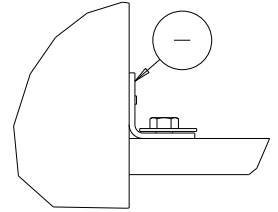
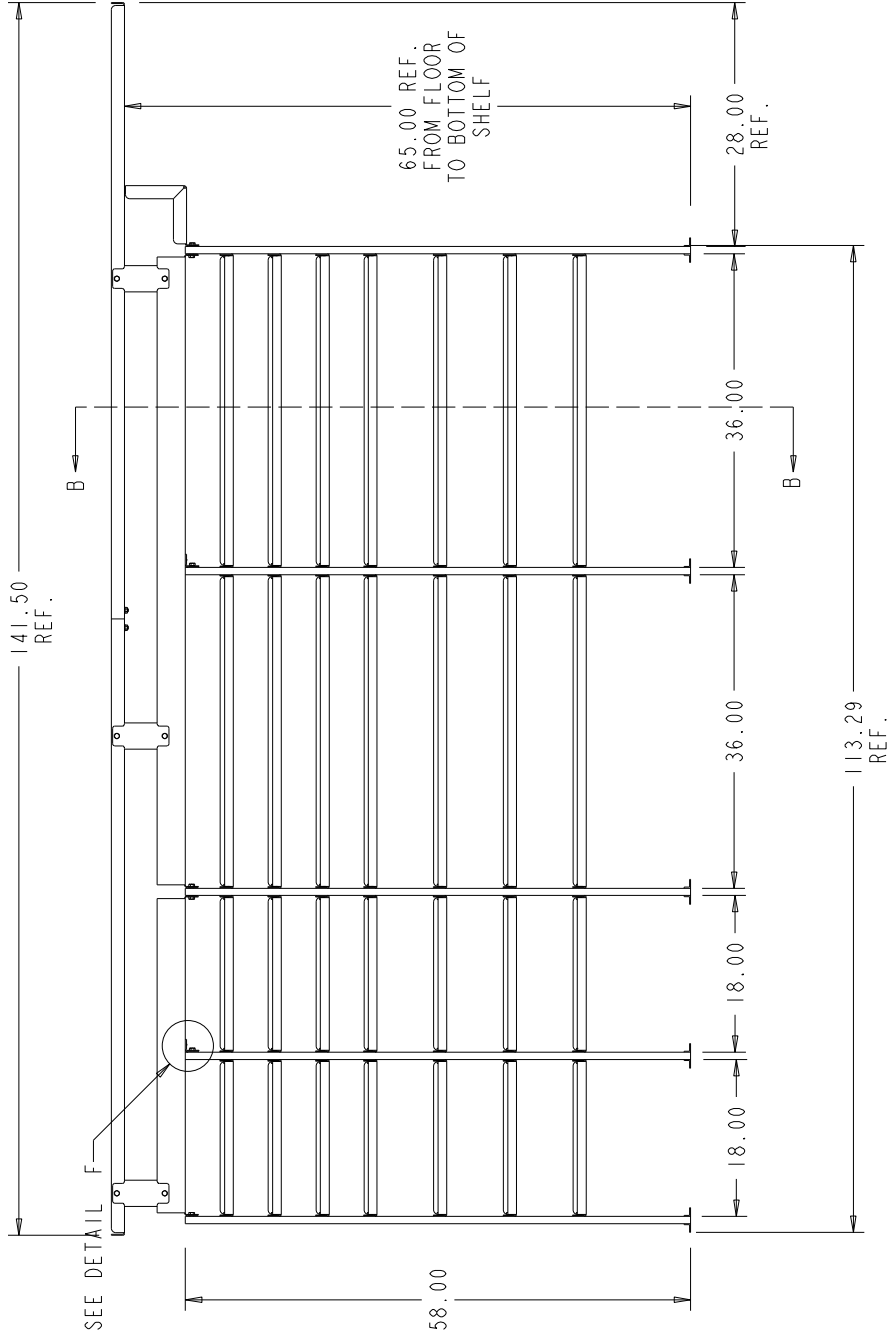
VT Hackney
A company of VT Systems




Hackney
Kibron

252-946-6521
hackney.com kibron.com vtvisioncomms.com

VISIONCOMMS

SHELF ASSEMBLY LH - P2000 12'-6" STD

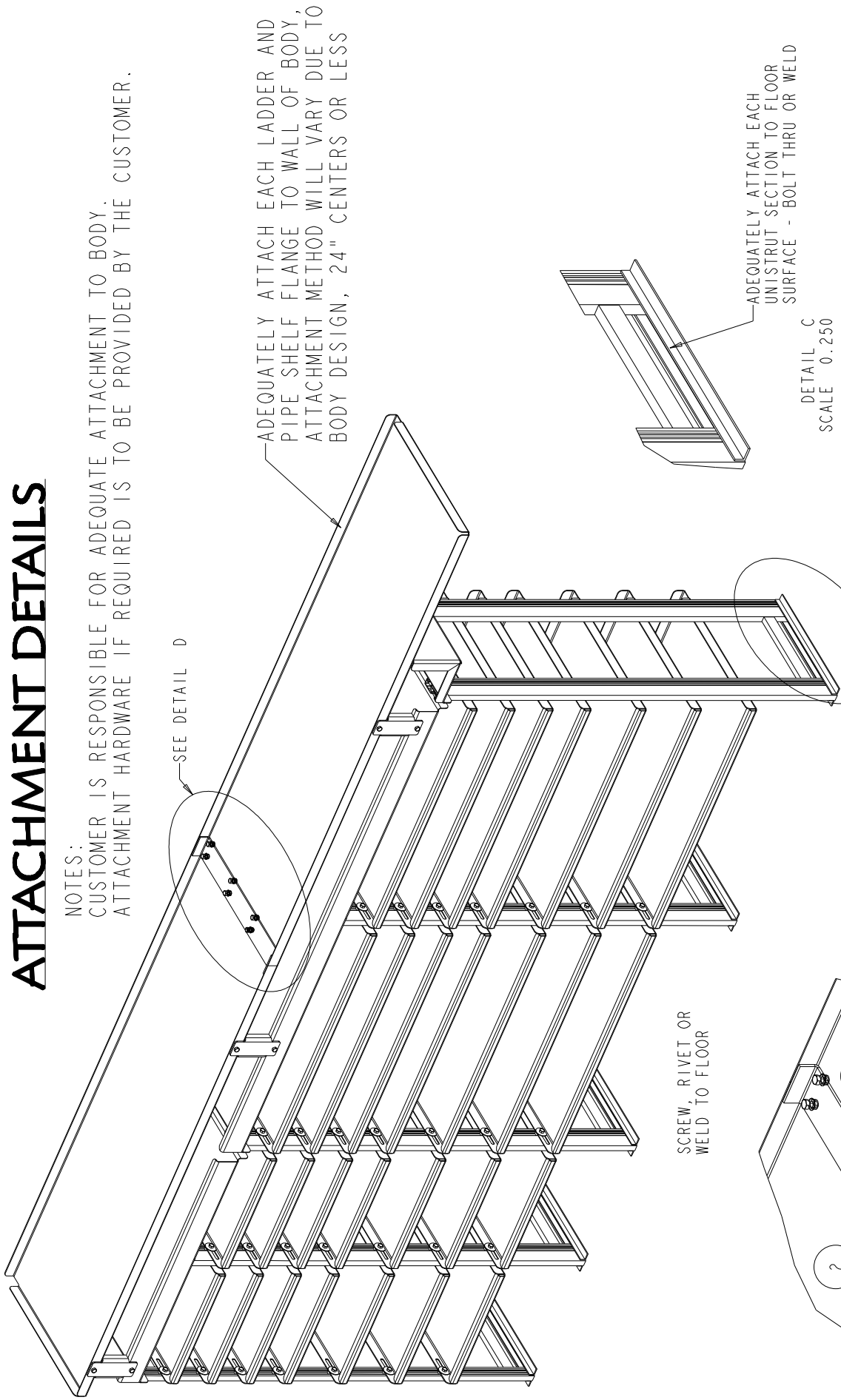


 VT Hackney A company of VT Systems		 		252-946-8521 hackney.com kibron.com vtvisioncomms.com VISIONCOMMS	
NUMBER PARTS	WEIGHT 346.908	TOLERANCE UNLESS OTHERWISE SPECIFIED .XX = +/- .060 .XXX = +/- .030	DESCRIPTION SHELF ASSEMBLY LH - P2000 12'-6" STD	SCALE 0.100	DWG. NAME P12C0152 Sheet 2 of 4
ROUTING FINAL	MATL CODE ZA				
ITEM NO 374467	SHRPE DESC				
TRM_MATL	HRS 0.000				
DRAWN BY LCS	DATE 08-Mar-12				
APPROVED BY	DATE				
SUPERSEDES	SUPERSEDED BY				

ATTACHMENT DETAILS

NOTES:

CUSTOMER IS RESPONSIBLE FOR ADEQUATE ATTACHMENT TO BODY.
 ATTACHMENT HARDWARE IF REQUIRED IS TO BE PROVIDED BY THE CUSTOMER.



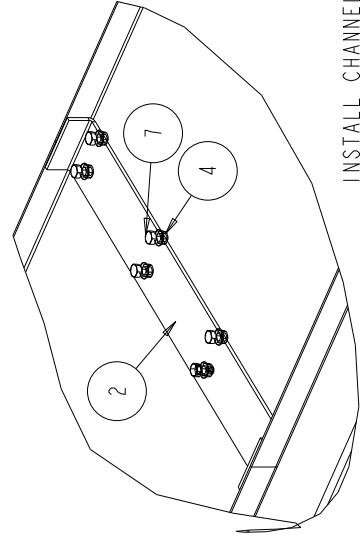
ADEQUATELY ATTACH EACH LADDER AND PIPE SHELF FLANGE TO WALL OF BODY, ATTACHMENT METHOD WILL VARY DUE TO BODY DESIGN, 24" CENTERS OR LESS

SCREW, RIVET OR WELD TO FLOOR

ADEQUATELY ATTACH EACH UNISTRUT SECTION TO FLOOR SURFACE - BOLT THRU OR WELD

DETAIL C
 SCALE 0.250

SEE DETAIL C

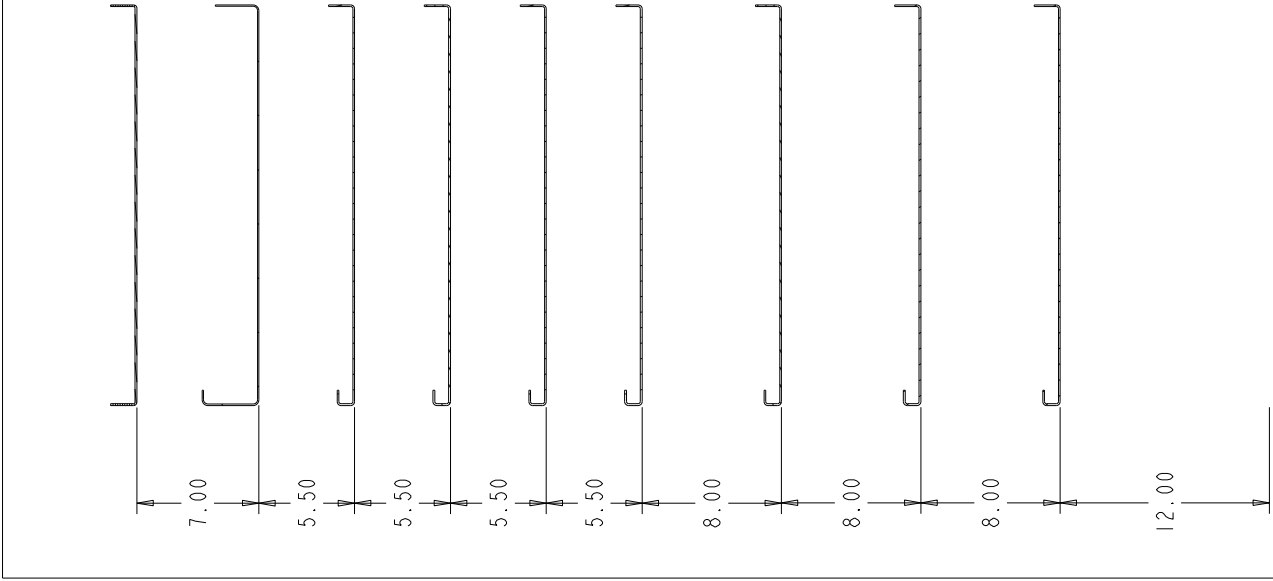


INSTALL CHANNEL ON TOP OF LADDER SHELF JOINT, CLAMP AND DRILL, INSTALL SCREW AND NUT

DETAIL D
 SCALE 0.250


NUMBER	WEIGHT	TOLERANCE UNLESS OTHERWISE SPECIFIED	 VT Hackney A company of VT Systems	 Hackney A company of VT Systems
PARTS	346.908	.XX = +/- .060 .XXX = +/- .030		
ROUTING	MATL CODE		252-946-6521	hackney.com
FINAL	ZA		vthackney.com	kibron.com
ITEM NO	SHAPE DESC		vtvisioncomms.com	vtvisioncomms.com
374467				
REV/MATL	HRS	DESCRIPTION		
	0.000			
DRAWN BY	DATE			
LCS	09-Mar-12			
APPROVED BY	DATE			
SUPERSEDES	SUPERSEDED BY	SCALE	DWG. NAME	
		0.125	P12C0152 Sheet 3 of 4	

BBL NO.	ITEM DESCRIPTION	LENGTH	WIDTH	WEIGHT	MATERIAL CODE	ITEM NUMBER	
						QTY REQD	MODEL NAME
1	ANGLE-SUPPORT	18.250		0.583	BB1	2	342341
2	CHANNEL - JOINT			1.361	BC2	1	361212
3	CHANNEL-LADDER SUPPORT			0.421	BC2	3	342970
4	NUT-HEX 0.38 LK			0.018	E1	14	1485
5	NUT-UNISTRUT 3/8-16			0.086	C4	126	802807
6	RIVET-SSD64BS .19	0.750		0.003	E3	6	30710
7	SCREW-HEX.38X .75 GR5			0.043	E0	140	802804
8	SHELF-BAY 1	23.000	36.000	9.493	BB2	7	315739
9	SHELF-BAY 2	23.000	36.000	9.493	BB2	7	315739
10	SHELF-BAY 3	23.000	18.000	4.979	BB2	7	315738
11	SHELF-BAY 4	23.000	18.000	4.979	BB2	7	315738
12	SHELF-LADDER LH	23.000	70.750	17.871	BB2	1	361210
13	SHELF-LADDER RH	23.000	70.750	17.871	BB2	1	361211
14	SHELF-PIPE LH	23.000	72.750	16.750	BB3	1	374458
15	SHELF-PIPE RH	23.000	36.750	8.646	BB3	1	374459
16	SHELF-PIPE STOP 12'-6"			4.656	BB1	1	367686
17	UNISTRUT ASM-END			7.946	ZA	1	367301
18	UNISTRUT ASM-MIDDLE			11.577	ZA	4	324368
19	WASHER-FLAT .38 D-SHAPED			0.007	E2	126	816154



SECTION B-B
TYP. SHELF SPACING

THIS PRINT AND ALL RIGHTS TO THE DESIGN AND DETAIL THEREON ARE THE PROPERTY OF VT HACKNEY AND IS LOANED TO THE RECIPIENT SUBJECT TO RETURN UPON DEMAND. ITS CONTENTS ARE CONFIDENTIAL AND MUST NOT BE COPIED OR SUBMITTED TO OUTSIDE PARTIES FOR USE OR EXAMINATION. COPYRIGHT 2012 VT HACKNEY A COMPANY OF VT SYSTEMS



VT Hackney
A company of VT Systems




252-946-6521
hackney.com
kibron.com
vvisioncomms.com

NUMBER	WEIGHT	TOLERANCE UNLESS OTHERWISE SPECIFIED	SCALE	DRAWING NAME
PARTS	346.908	.XX=+/- .060 .XXX=+/- .030	0.200	P12C0152 Sheet 4 of 4
ROUTING	MATL CODE			
FINAL	ZA			
ITEM NO	SURF DESC			
374467				
RAW/MATL	RHS			
	0.000			
DRAWN BY	DATE	DESCRIPTION		
LCS	09-Mar-12	SHELF ASSEMBLY LH - P2000 12'-6" STD		
APPROVED BY	DATE			
SUPERSEDES	SUPERSEDED BY			