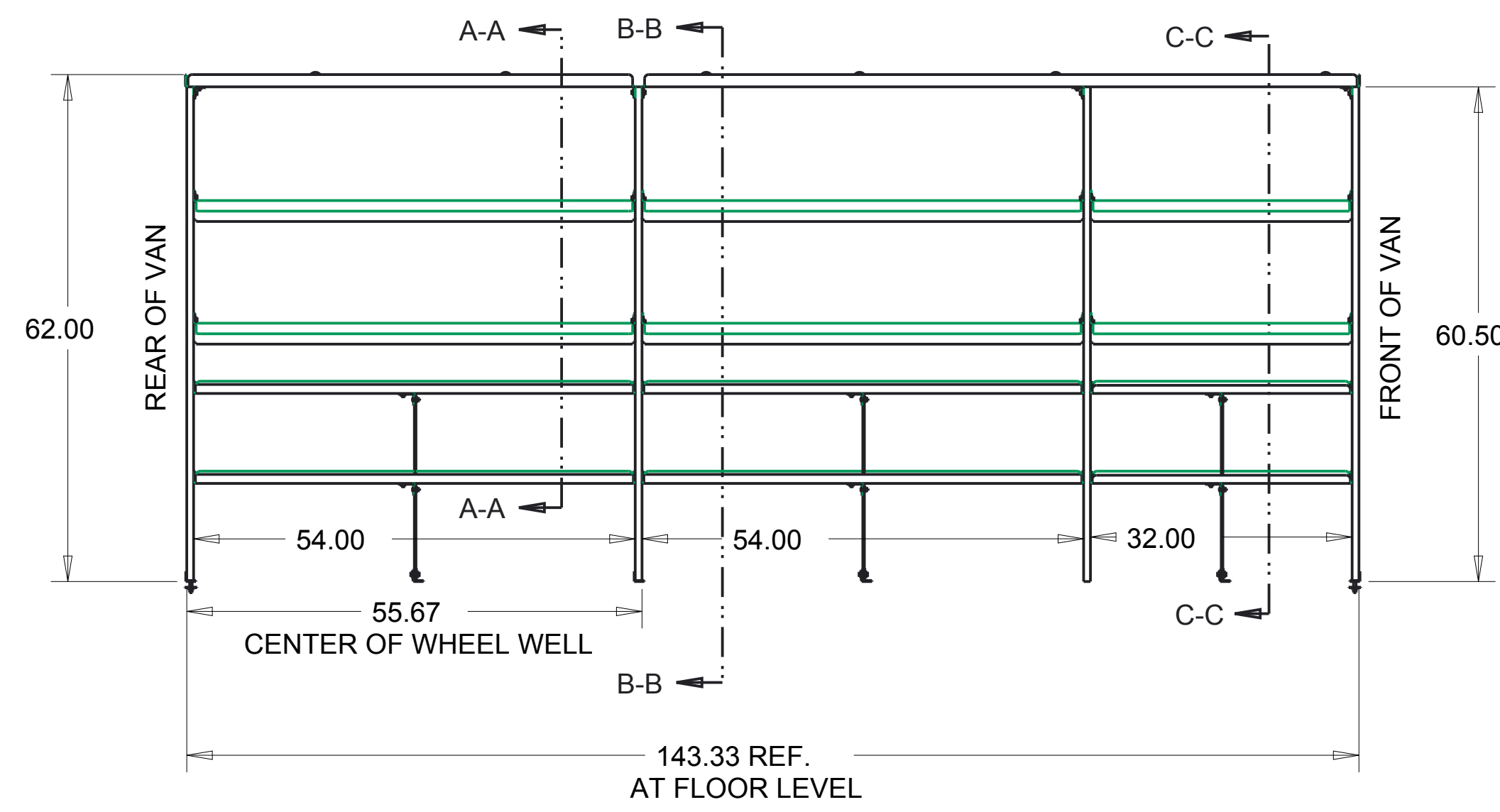
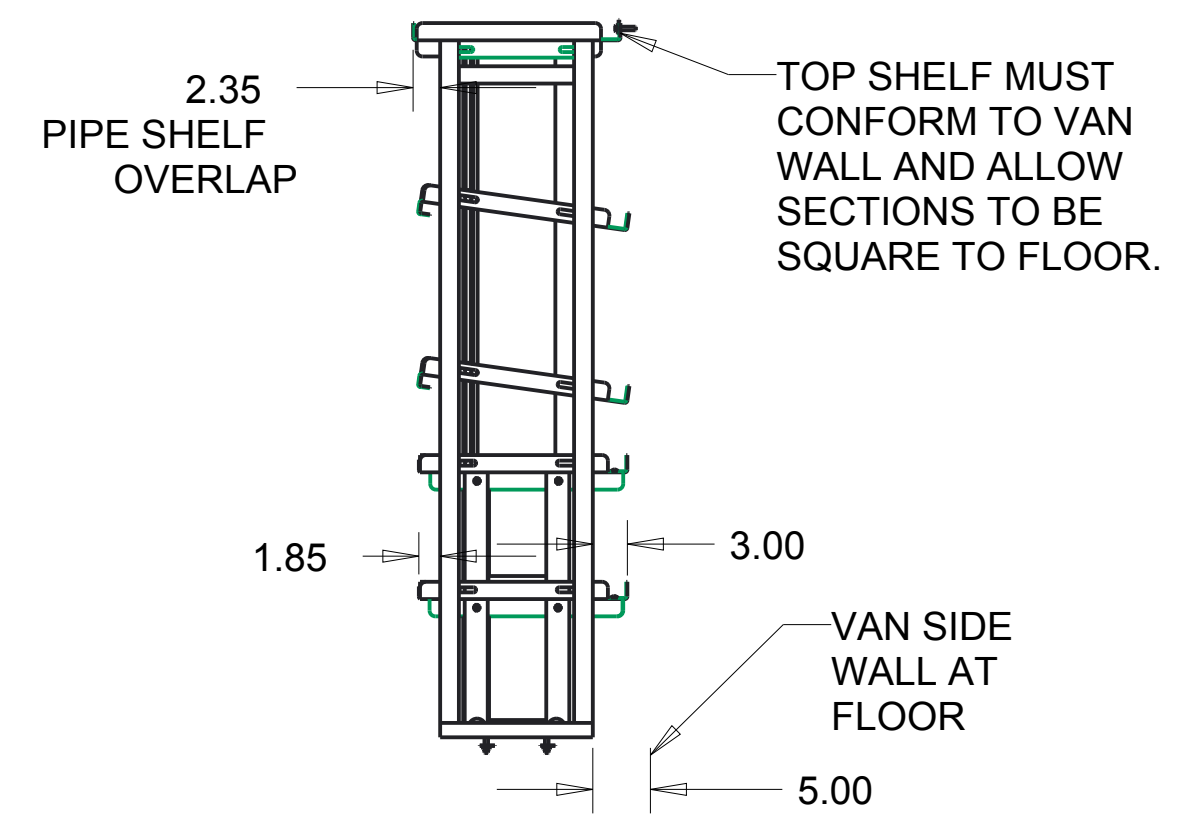


| BBL NO. | ITEM DESCRIPTION                        | LENGTH | WIDTH  | WEIGHT | MATL CODE | QTY REQD | ITEM NO. | MODEL NAME |
|---------|---|--------|--------|--------|-----------|----------|----------|------------|
| 1       | ANGLE-.10X1.50X1.50X 13.25              | 13.250 | 2.810  | 0.334  | BB2       | 3        | 385287   | P15C0410   |
| 2       | ANGLE-.10X1.50X1.50X 16.75              | 16.750 | 3.310  | 0.531  | BB2       | 6        | 386570   | 386570     |
| 3       | ANGLE-1.25X 1.25X.12X 10.00             | 10.000 |        | 0.823  | B0M       | 3        | 386576   | 386576     |
| 4       | BAR-FLAT 2.00X.19X22.875" REINFORCEMENT |        |        | 2.426  | B0M       | 6        | 386572   | 386572     |
| 5       | NUT-HEX .25 P                           |        |        | 0.007  | E1        | 33       | 1378     | 1378       |
| 6       | NUT-HEX 0.38 LK                         |        |        | 0.018  | E1        | 6        | 1485     | 1485       |
| 7       | NUT-HEX M8 x 1.25 SST                   |        |        | 0.011  | E1        | 4        | 820637   | 820637     |
| 8       | NUT-UNISTRUT W/O SPRING .38-16          |        |        | 0.086  | C4        | 58       | 802807   | 802807     |
| 9       | SCREW-CARRIAGE .25X .50                 |        |        | 0.014  | E0        | 21       | 826255   | 826255     |
| 10      | SCREW-CARRIAGE .25X .75                 |        |        | 0.018  | E0        | 12       | 1430     | 1430       |
| 11      | SCREW-HEX M8-1.25x40MM SST              |        |        | 0.048  | E0        | 10       | 820664   | 820664     |
| 12      | SCREW-HEX.38X .75 GR5                   | 0.750  |        | 0.043  | E0        | 64       | 802804   | 802804     |
| 13      | SHELF-TOP 18"x55" LH DRIVERSIDE         | 55.000 | 18.000 | 11.352 | BB2       | 1        | 386575   | P17C0095   |
| 14      | SHELF-TOP 18"x87.75" RH DRIVERSIDE      | 87.750 | 18.000 | 17.896 | BB2       | 1        | 386574   | P17C0094   |
| 15      | SHELF-TRAY 18"x32"DRINK                 | 32.000 | 18.000 | 6.587  | BB2       | 2        | 386567   | P17C0088   |
| 16      | SHELF-TRAY 18"x54" VENDING SHELF        | 54.000 | 18.000 | 11.466 | BB2       | 4        | 386568   | P17C0089   |
| 17      | SHELF-TRAY 18"x54"DRINK                 | 54.000 | 18.000 | 10.999 | BB2       | 4        | 386569   | P17C0090   |
| 18      | SHELF-TRAY 23"x32" VENDING              | 32.000 | 18.000 | 6.929  | BB2       | 2        | 386573   | P17C0093   |
| 19      | UNISTRUT ASM-DOUBLE                     |        |        | 9.386  | ZA        | 1        | 385288   | 385288     |
| 20      | UNISTRUT ASM-DOUBLE SPECIAL             |        |        | 9.054  | ZA        | 1        | 386577   | 386577     |
| 21      | UNISTRUT ASM-SINGLE                     |        |        | 6.188  | ZA        | 2        | 385289   | 385289     |
| 22      | WASHER-FLAT .38 D-SHAPED                |        |        | 0.007  | E2        | 80       | 816154   | 816154     |
| 23      | WASHER-FLAT M8 SST                      |        |        | 0.007  | E2        | 4        | 820670   | 820670     |
| 24      | WASHER-LOCK .25                         |        |        | 0.002  | E2        | 33       | 1372     | 1372       |
| 25      | WASHER-LOCK M8 SST                      |        |        | 0.004  | E2        | 10       | 820638   | 820638     |



VIEWED FROM AISLE



|             |         |               |           |                                      |
|-------------|---------|---------------|-----------|--------------------------------------|
| NUMBER      | TRANSIT | WEIGHT        | 209.60    | TOLERANCE UNLESS OTHERWISE SPECIFIED |
| ROUTING     | FINAL   | MATL CODE     | ZA        | .XX=+/- .060<br>.XXX=+/- .030        |
| ITEM NO     | 386565  | SHAPE DESC    |           |                                      |
| RAW_MATL    |         | HRS           | 0.000     |                                      |
| DRAWN BY    | LRE     | DATE          | Mar-06-17 |                                      |
| APPROVED BY |         | DATE          |           |                                      |
| SUPERSEDES  |         | SUPERSEDED BY |           | SCALE                                |
|             |         |               |           | 0.060                                |

**VT Hackney** *Hackney*  
A company of VT Systems

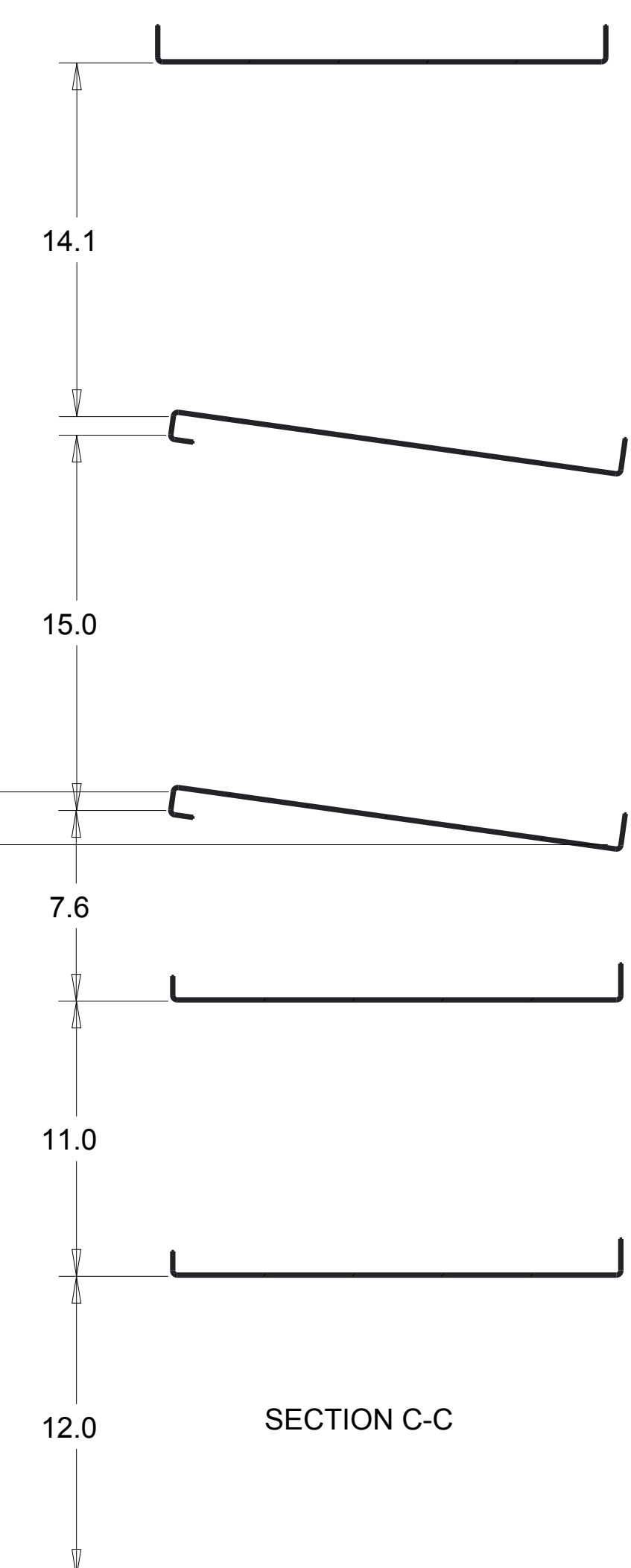
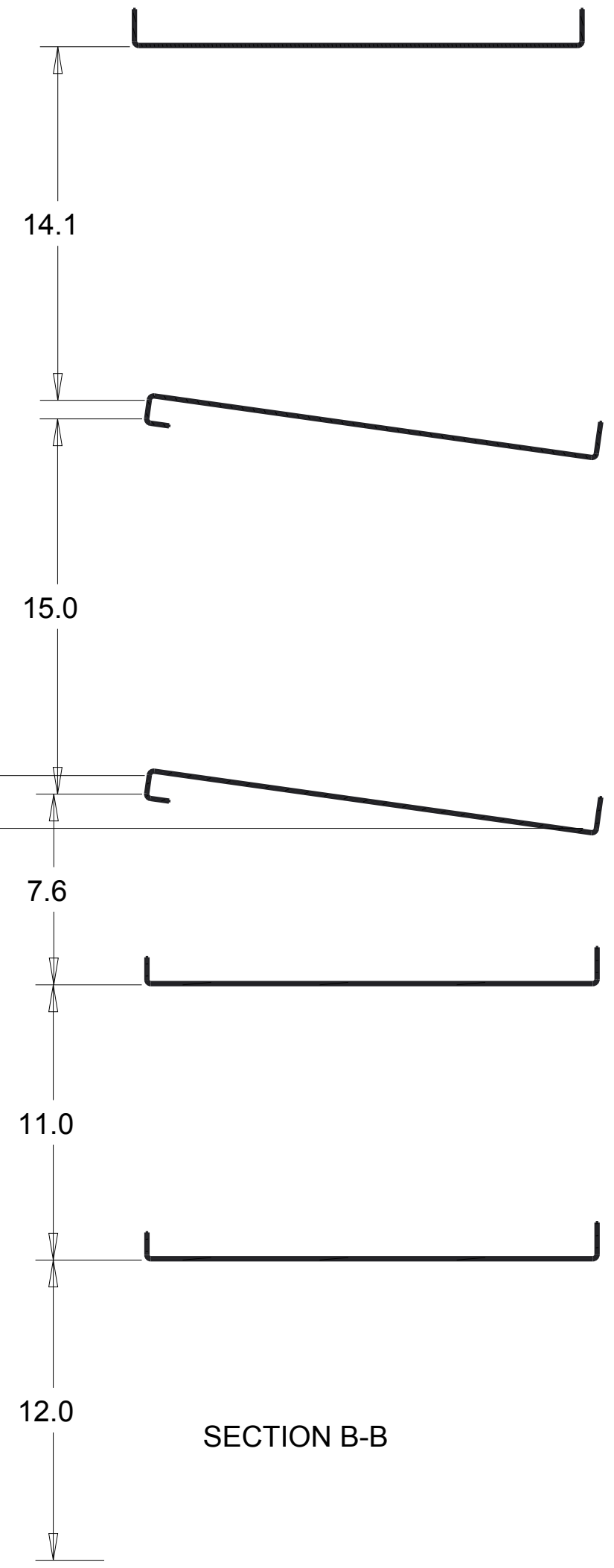
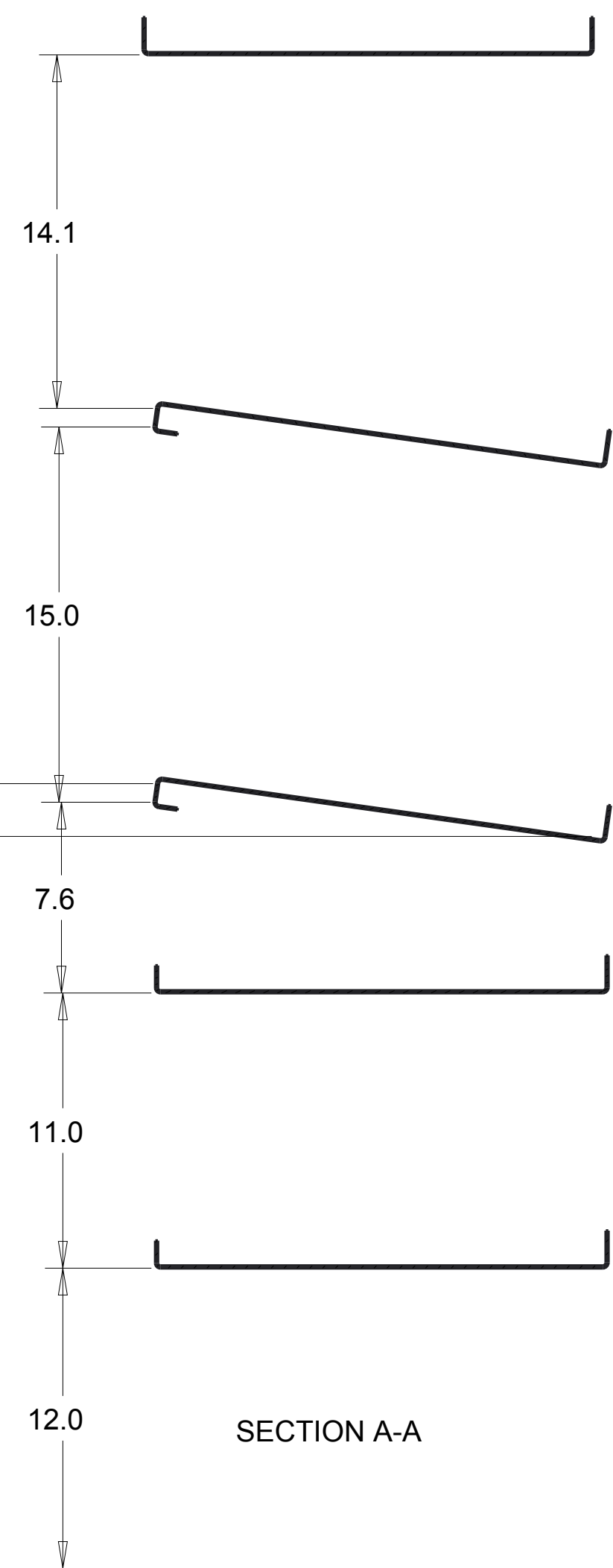
252-946-6521  
vthackney.com hackney.com kidron.com vtvisioncomms.com *Kidron*




**VisionComms**

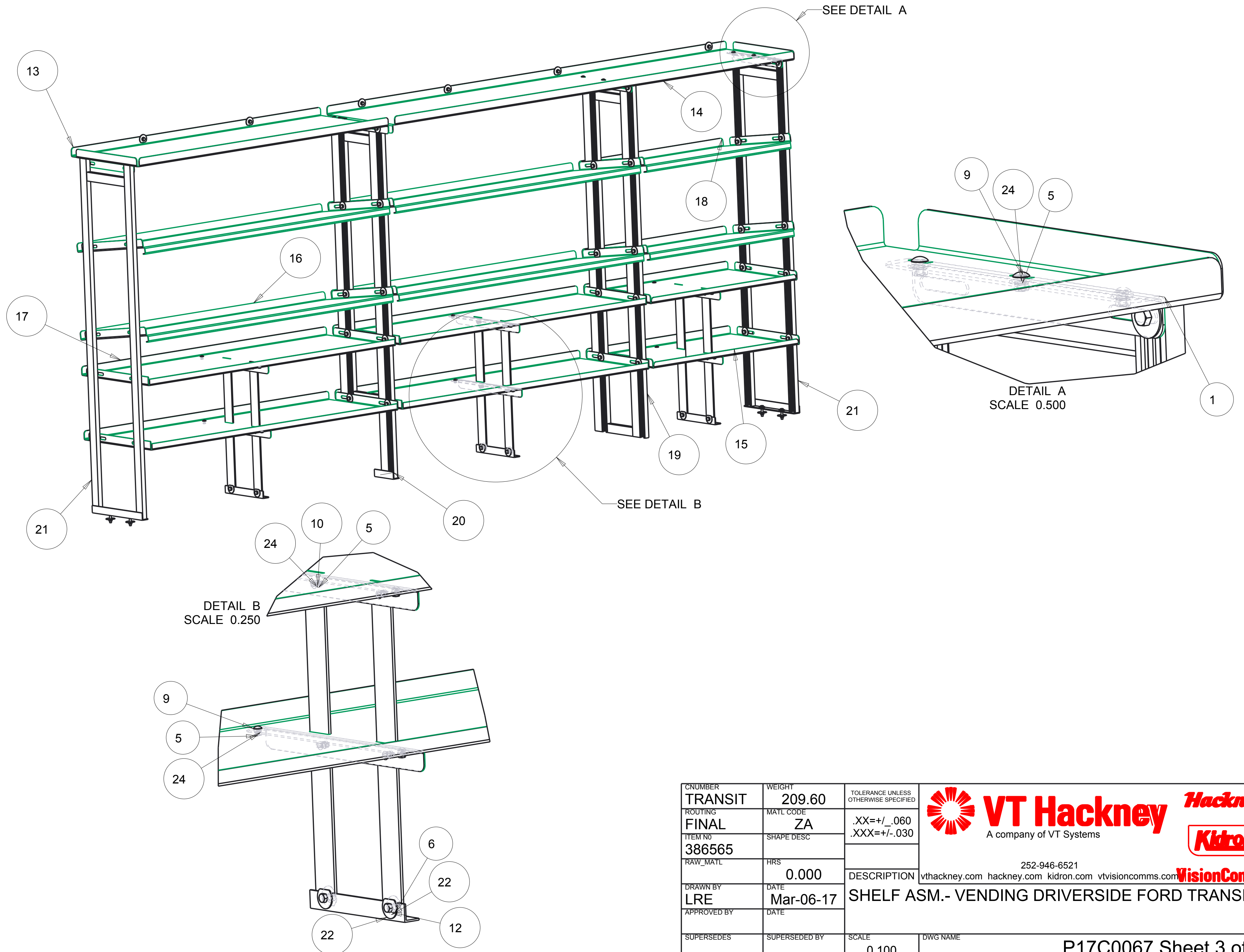
DESCRIPTION SHELF ASM.- VENDING DRIVERSIDE FORD TRANSIT


THIS PRINT AND ALL RIGHTS TO THE DESIGN AND DETAIL THEREON ARE THE PROPERTY OF VT HACKNEY AND IS LOANED TO THE RECIPIENT SUBJECT TO RETURN UPON DEMAND. ITS CONTENTS ARE CONFIDENTIAL AND MUST NOT BE COPIED OR SUBMITTED TO OUTSIDE PARTIES FOR USE OR EXAMINATION. COPYRIGHT 2017 VT HACKNEY A COMPANY OF VT SYSTEMS

| REV | REVISION DESCRIPTION | ECN | DATE | INITIALS |
|-----|----------------------|-----|------|----------|
|     |                      |     |      |          |



|                    |                   |   |  |
|--------------------|-------------------|---|--|
| CNUMBER<br>TRANSIT | WEIGHT<br>209.60  | TOLERANCE UNLESS OTHERWISE SPECIFIED        | <br><b>VT Hackney</b><br>A company of VT Systems<br> |
| ROUTING<br>FINAL   | MATL CODE<br>ZA   | .XX=+/- .060<br>.XXX=+/- .030               |  |
| ITEM NO<br>386565  | SHAPE DESC        |   | 252-946-6521<br>vtackney.com hackney.com kidron.com vtvisioncomms.com<br>   |
| RAW_MATL           | HRS<br>0.000      | DESCRIPTION                                 |  |
| DRAWN BY<br>LRE    | DATE<br>Mar-06-17 | SHELF ASM.- VENDING DRIVERSIDE FORD TRANSIT |  |
| APPROVED BY        | DATE              | SCALE<br>0.175                              | DWG NAME<br>P17C0067 Sheet 2 of 4  |
| SUPERSEDES         | SUPERSEDED BY     |   |  |

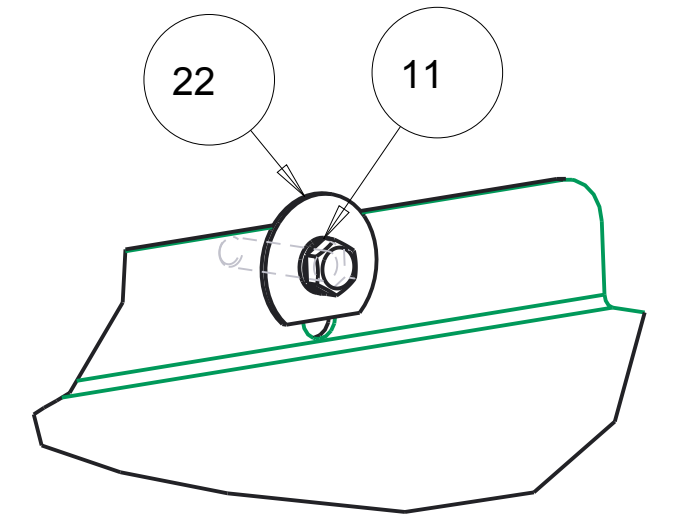
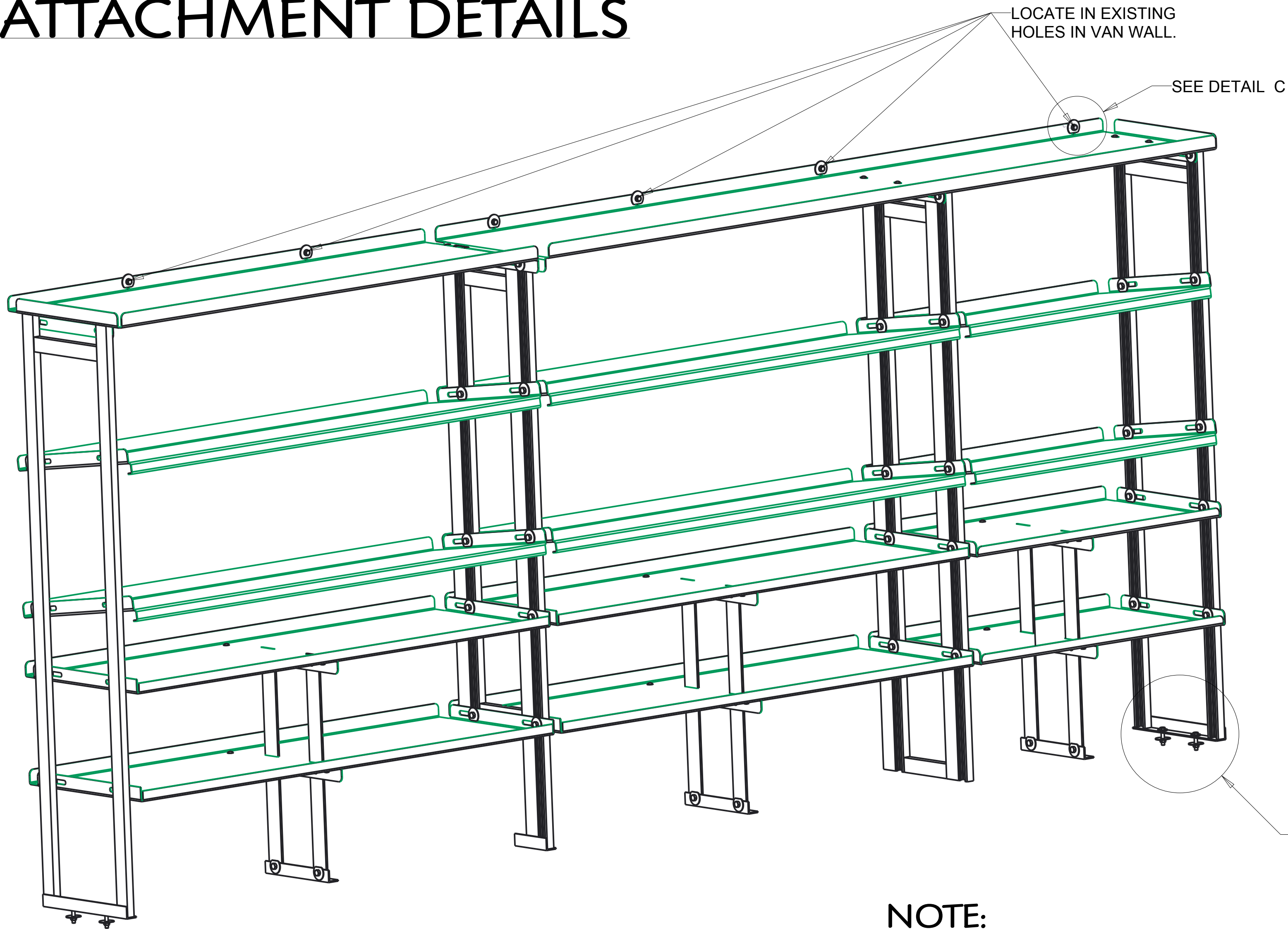


|             |               |                                      |  |
|-------------|---------------|--------------------------------------|--|
| NUMBER      | WEIGHT        | TOLERANCE UNLESS OTHERWISE SPECIFIED | <br>A company of VT Systems |
| TRANSIT     | 209.60        |                                      |  |
| ROUTING     | MATL CODE     | .XX=+/- .060                         | 252-946-6521<br>vtackney.com hackney.com kidron.com vtvisioncomms.com  |
| FINAL       | ZA            | .XXX=+/- .030                        |  |
| ITEM NO     | SHAPE DESC    |                                      | DESCRIPTION  |
| 386565      |               |                                      |  |
| RAW_MATL    | HRS           |                                      | SHELF ASM.- VENDING DRIVERSIDE FORD TRANSIT  |
|             | 0.000         |                                      |  |
| DRAWN BY    | DATE          |                                      | DWG NAME   |
| LRE         | Mar-06-17     |                                      |  |
| APPROVED BY | DATE          |                                      | SCALE  |
|             |               |                                      |  |
| SUPERSEDES  | SUPERSEDED BY | SCALE                                | 0.100  |
|             |               |                                      | P17C0067 Sheet 3 of 4  |

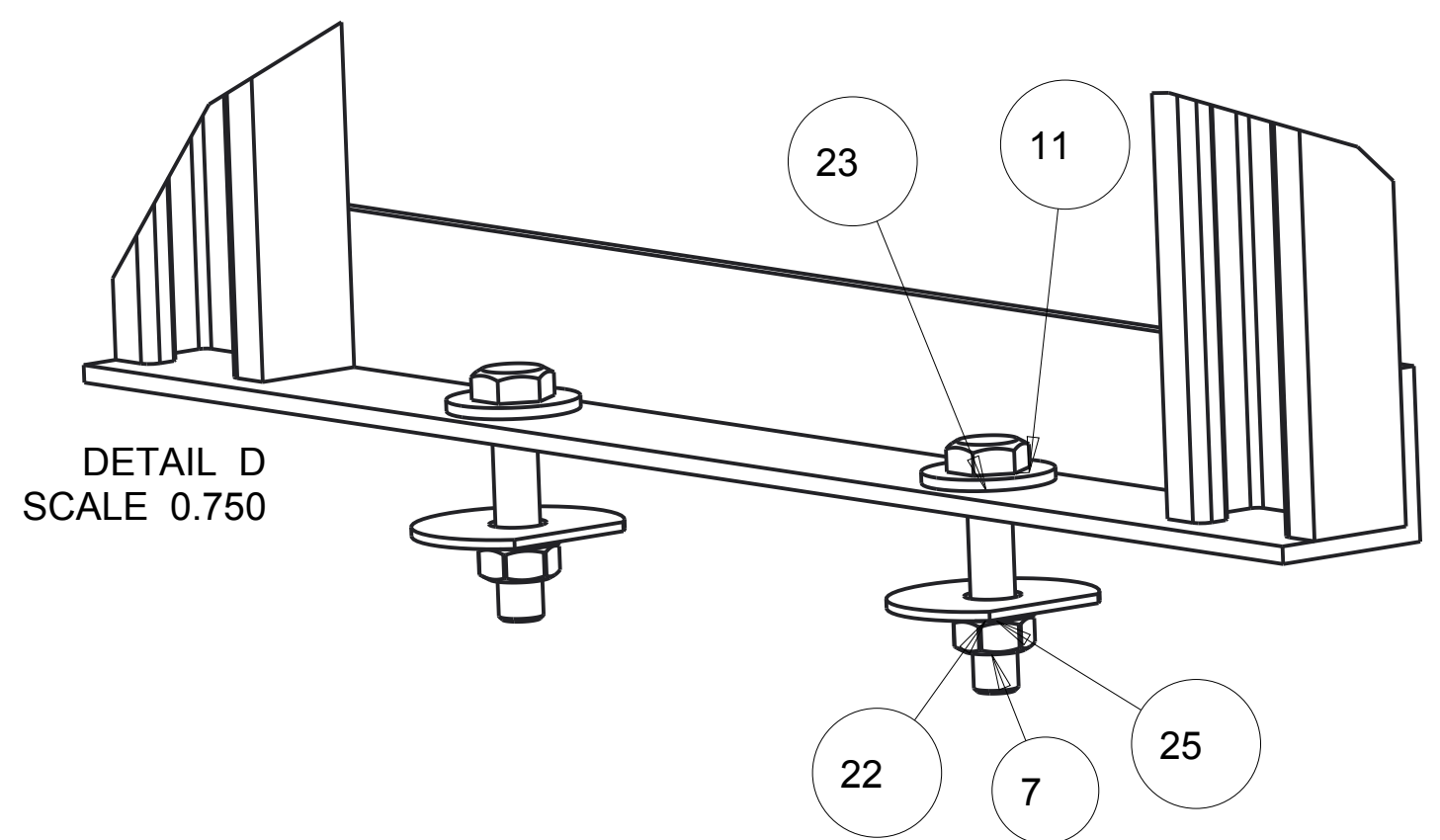


# ATTACHMENT DETAILS

ITEM NUMBER 386565




DETAIL C  
SCALE 0.500



DETAIL D  
SCALE 0.750

**NOTE:**  
BEFORE DRILLING ANY HOLE THRU THE FOOR OR WALL, VERIFY CLEARANCE ON BACKSIDE OF HOLE.

|                   |                   |   |  |
|-------------------|-------------------|---|--|
| NUMBER<br>TRANSIT | WEIGHT<br>209.60  | TOLERANCE UNLESS OTHERWISE SPECIFIED        | <br>A company of VT Systems |
| ROUTING<br>FINAL  | MATL CODE<br>ZA   | .XX=+/- .060<br>.XXX=+/- .030               |  |
| ITEM NO<br>386565 | SHAPE DESC        |   | 252-946-6521<br>vtackney.com hackney.com kidron.com vtvisioncomms.com  |
| RAW_MATL          | HRS<br>0.000      | DESCRIPTION                                 |  |
| DRAWN BY<br>LRE   | DATE<br>Mar-07-17 | SHELF ASM.- VENDING DRIVERSIDE FORD TRANSIT |  |
| APPROVED BY       | DATE              | SCALE<br>0.125                              | DWG NAME<br>P17C0067 Sheet 4 of 4  |
| SUPERSEDES        | SUPERSEDED BY     |   |  |

**Hackney**

**Kidron**

**VisionComms**