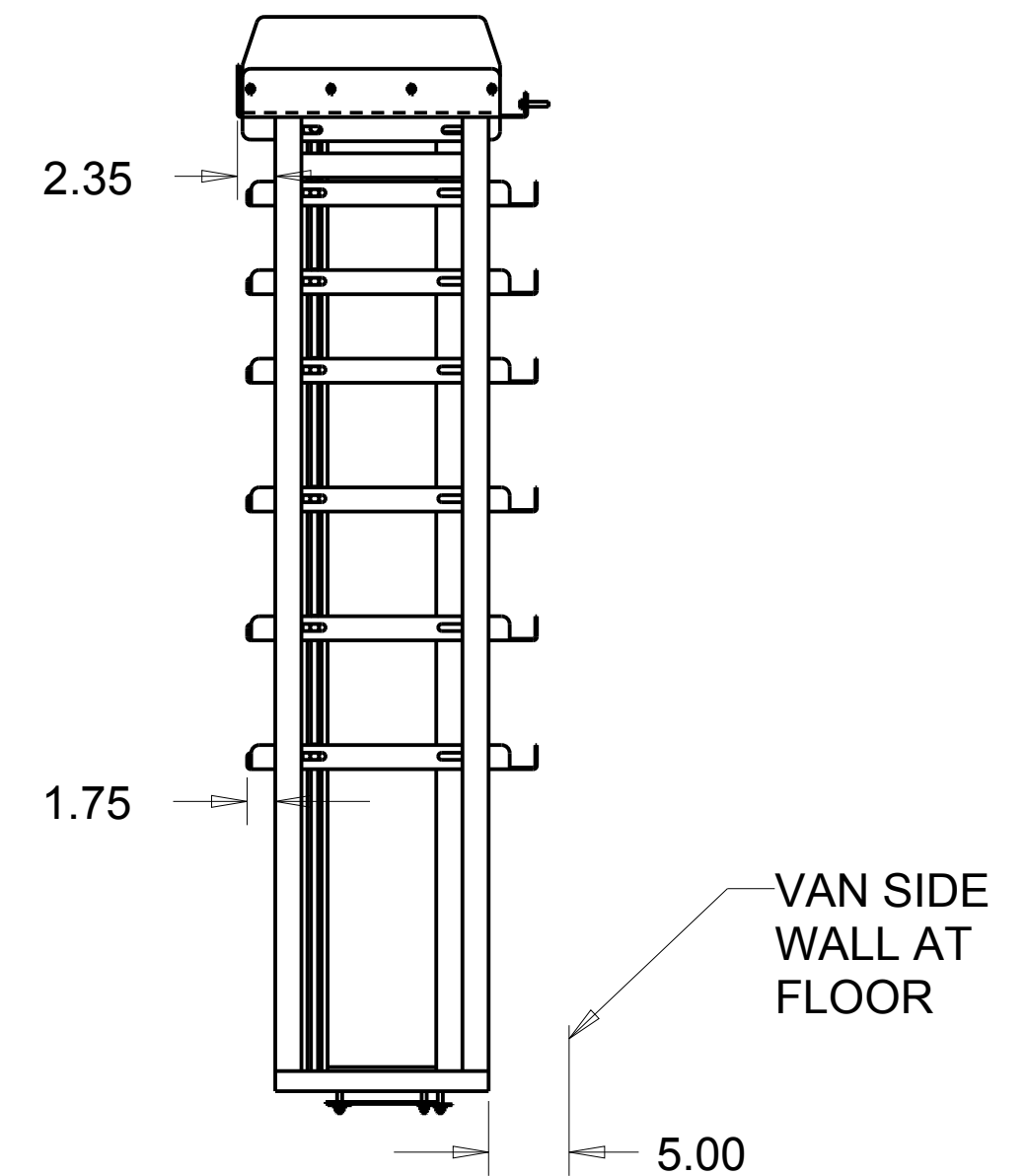
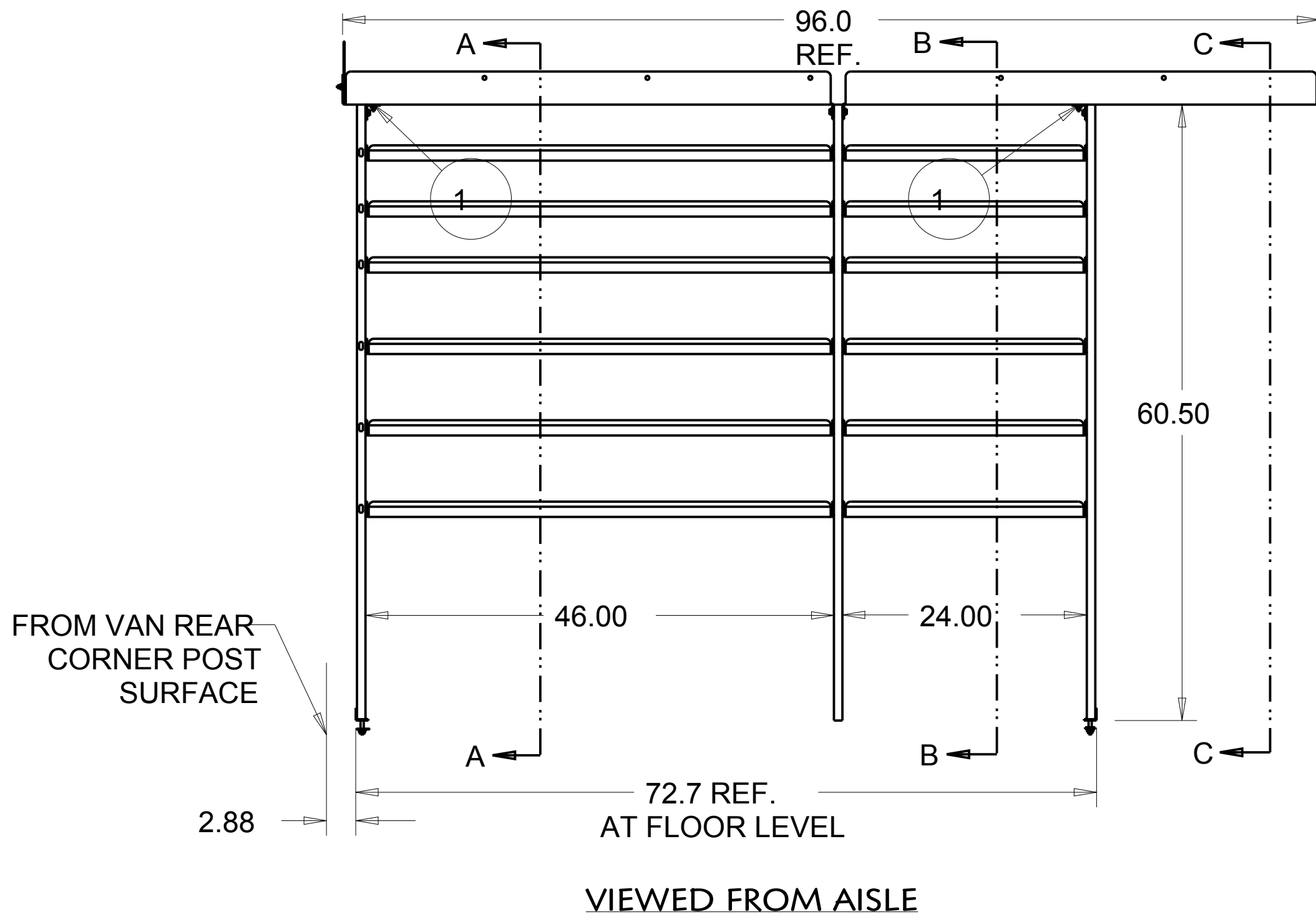




| BBL NO. | ITEM DESCRIPTION               | LENGTH | WIDTH  | WEIGHT | MATL CODE | QTY REQD | ITEM NO. | MODEL NAME |
|---------|--------------------------------|--------|--------|--------|-----------|----------|----------|------------|
| 1       | ANGLE-.10X1.50X1.50X 13.25     | 13.250 | 2.810  | 0.334  | BB2       | 2        | 385287   | P15C0410   |
| 2       | BAR-FLAT 1.00X.12X 7.00        | 7.000  |        | 0.239  | B12       | 1        | 385241   | 385241     |
| 3       | NUT-HEX .25 P                  |        |        | 0.007  | E1        | 14       | 1378     | 1378       |
| 4       | NUT-HEX M8 x 1.25 SST          |        |        | 0.011  | E1        | 4        | 820637   | 820637     |
| 5       | NUT-UNISTRUT W/O SPRING .38-16 |        |        | 0.086  | C4        | 56       | 802807   | 802807     |
| 6       | PIPE STOP SHEET                | 16.000 | 6.810  | 1.020  | BB2       | 2        | 385304   | P15C0435   |
| 7       | SCREW-CARRIAGE .25X .75        |        |        | 0.018  | E0        | 14       | 1430     | 1430       |
| 8       | SCREW-HEX M8-1.25x40MM SST     |        |        | 0.048  | E0        | 8        | 820664   | 820664     |
| 9       | SCREW-HEX.38X .75 GR5          | 0.750  |        | 0.043  | E0        | 56       | 802804   | 802804     |
| 10      | SHELF-TOP 18"x46.88"           | 46.875 | 18.000 | 10.732 | BB2       | 1        | 385351   | P15C0541   |
| 11      | SHELF-TOP 18"x48.25"           | 48.250 | 18.000 | 11.037 | BB2       | 1        | 385350   | P15C0540   |
| 12      | SHELF-TRAY 18"x24"             | 24.000 | 18.000 | 5.183  | BB2       | 6        | 385296   | P15C0418   |
| 13      | SHELF-TRAY 18"x46"             | 46.000 | 18.000 | 9.633  | BB2       | 6        | 385297   | P15C0419   |
| 14      | UNISTRUT ASM-DOUBLE            |        |        | 9.386  | ZA        | 1        | 385288   | 385288     |
| 15      | UNISTRUT ASM-SINGLE            |        |        | 6.188  | ZA        | 1        | 385289   | 385289     |
| 16      | UNISTRUT ASM-SINGLE REAR DS    |        |        | 6.186  | ZA        | 1        | 385354   | 385354     |
| 17      | WASHER-FLAT .38 D-SHAPED       |        |        | 0.007  | E2        | 62       | 816154   | 816154     |
| 18      | WASHER-FLAT M8 SST             |        |        | 0.007  | E2        | 8        | 820670   | 820670     |
| 19      | WASHER-LOCK .25                |        |        | 0.002  | E2        | 14       | 1372     | 1372       |
| 20      | WASHER-LOCK M8 SST             |        |        | 0.004  | E2        | 8        | 820638   | 820638     |




|             |         |               |           |  |  |
|-------------|---------|---------------|-----------|--|--|
| NUMBER      | TRANSIT | WEIGHT        | 145.267   | TOLERANCE UNLESS OTHERWISE SPECIFIED                                     |  |
| ROUTING     | FINAL   | MATL CODE     | ZA        | .XX=+/- .060   |  |
| ITEM NO     | 385343  | SHAPE DESC    |           | .XXX=+/- .030  |  |
| RAW_MATL    |         | HRS           | 0.000     | DESCRIPTION  | vthackney.com hackney.com kidron.com vtvisioncomms.com |
| DRAWN BY    | LCS     | DATE          | 11 APR 13 | SHELF ASM.- DRIVERSIDE FORD TRANSIT SHELF OPTION "24-46" 148"WB MED ROOF |  |
| APPROVED BY |         | DATE          |           | SCALE  | 0.085  |
| SUPERSEDES  |         | SUPERSEDED BY |           | DWG NAME   | P15C0524 Sheet 1 of 4                                  |



**VT Hackney**  
A company of VT Systems



**Kidron**

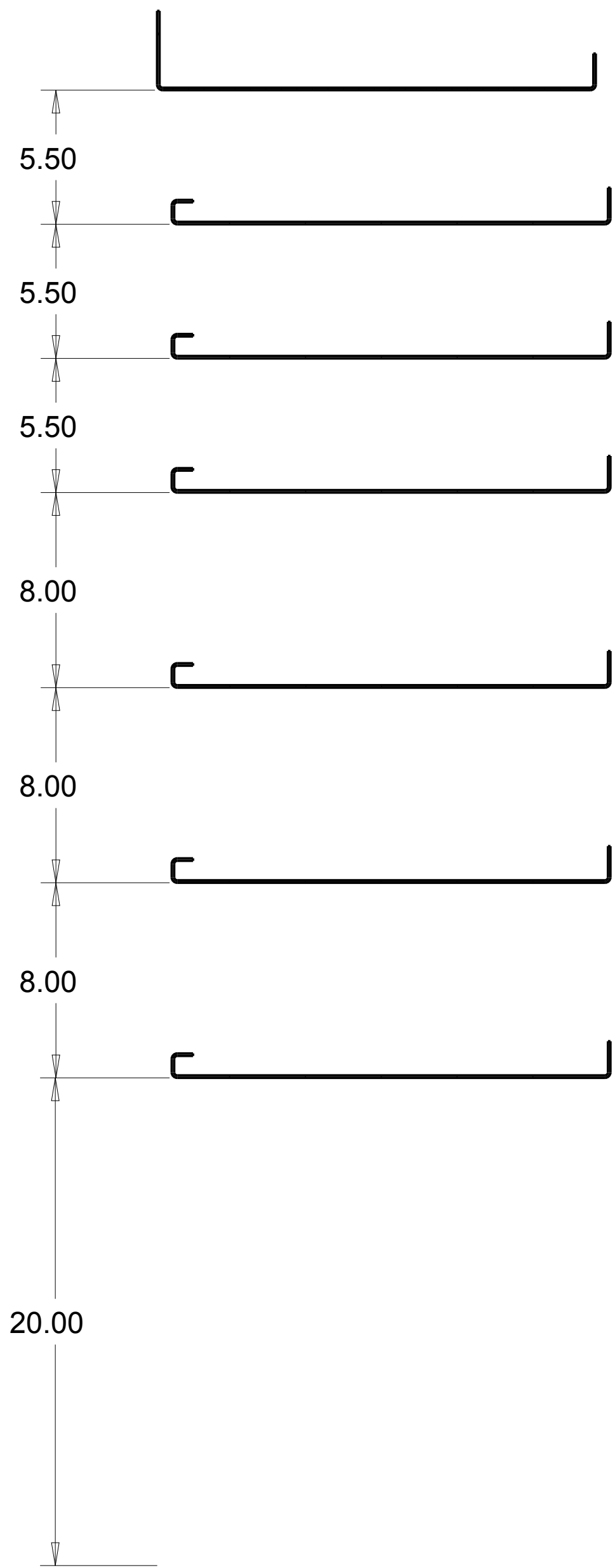


**VisionComms**

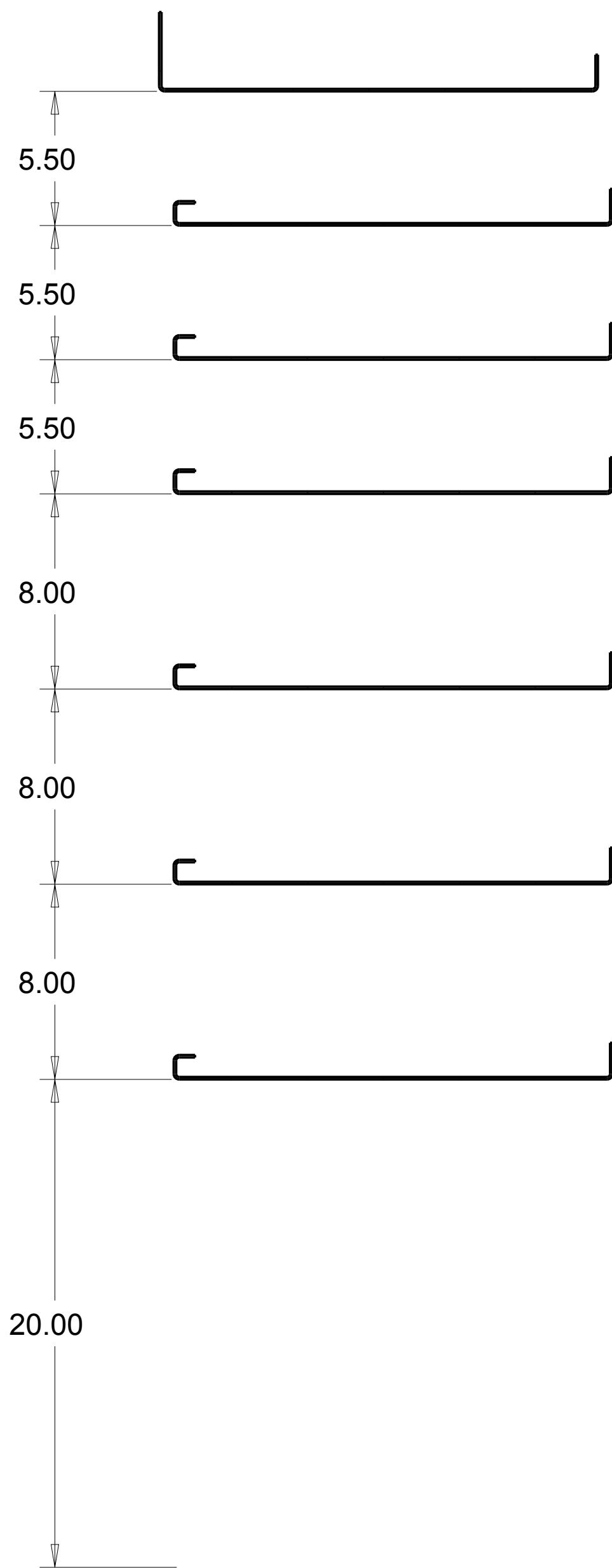
252-946-6521

THIS PRINT AND ALL RIGHTS TO THE DESIGN AND DETAIL THEREON ARE THE PROPERTY OF VT HACKNEY AND IS LOANED TO THE RECIPIENT SUBJECT TO RETURN UPON DEMAND. ITS CONTENTS ARE CONFIDENTIAL AND MUST NOT BE COPIED OR SUBMITTED TO OUTSIDE PARTIES FOR USE OR EXAMINATION. COPYRIGHT 2015 VT HACKNEY A COMPANY OF VT SYSTEMS

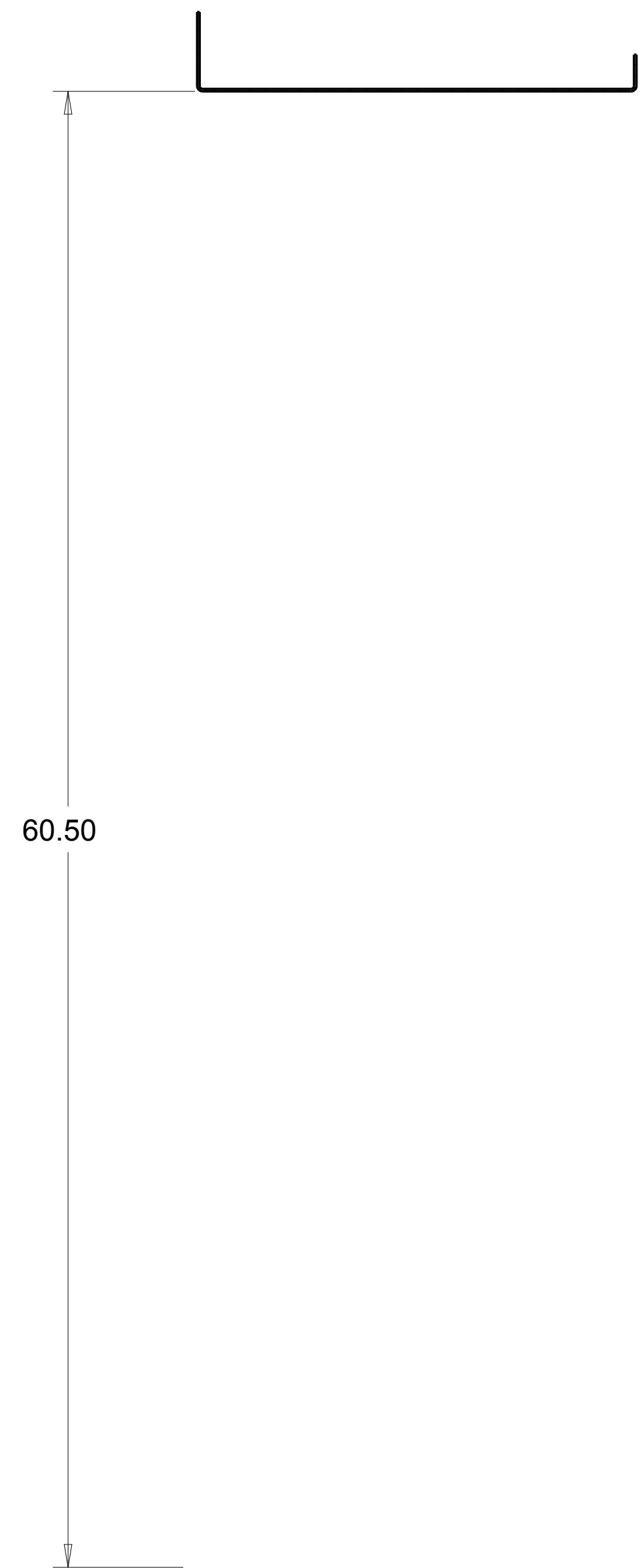
| REV | DESCRIPTION                | ECN | DATE      | INITIALS |
|-----|----------------------------|-----|-----------|----------|
| A   | UPDATED NOTE LOCATION PG.4 |     | 10 MAR 16 | LCS      |






SECTION A-A

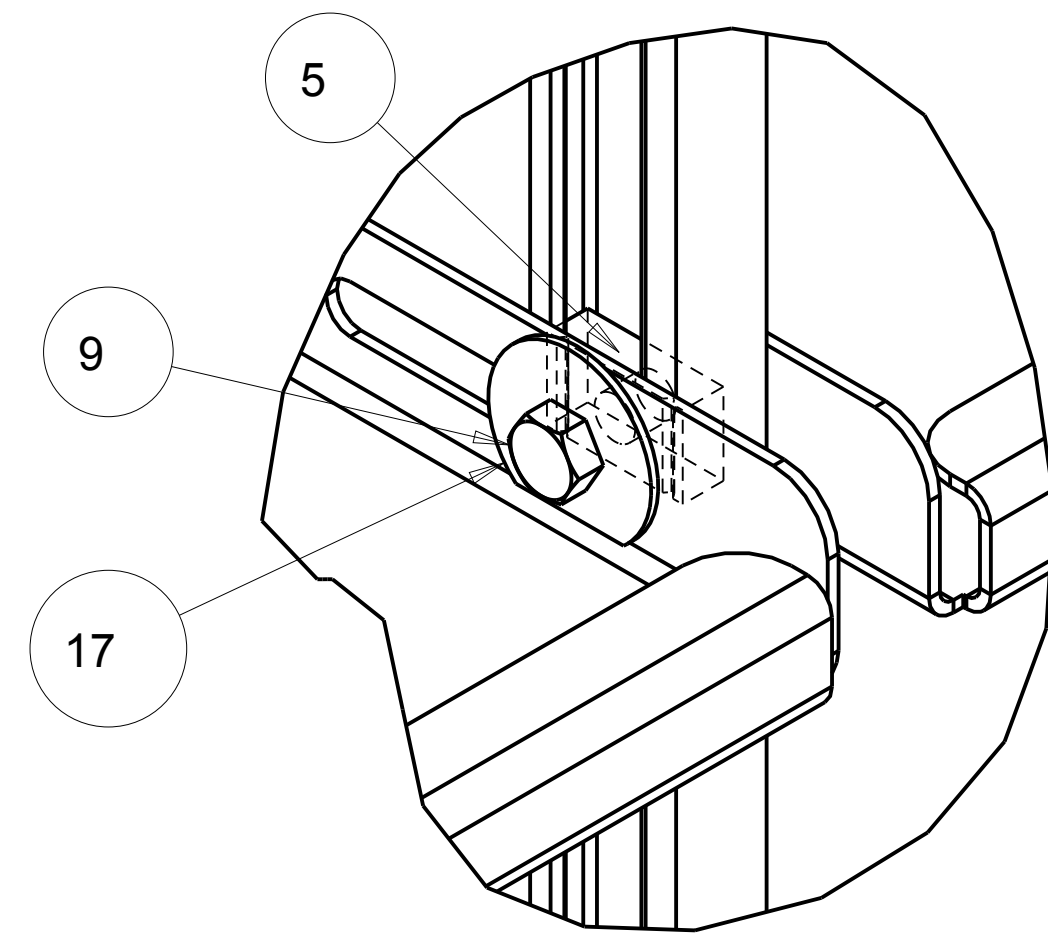
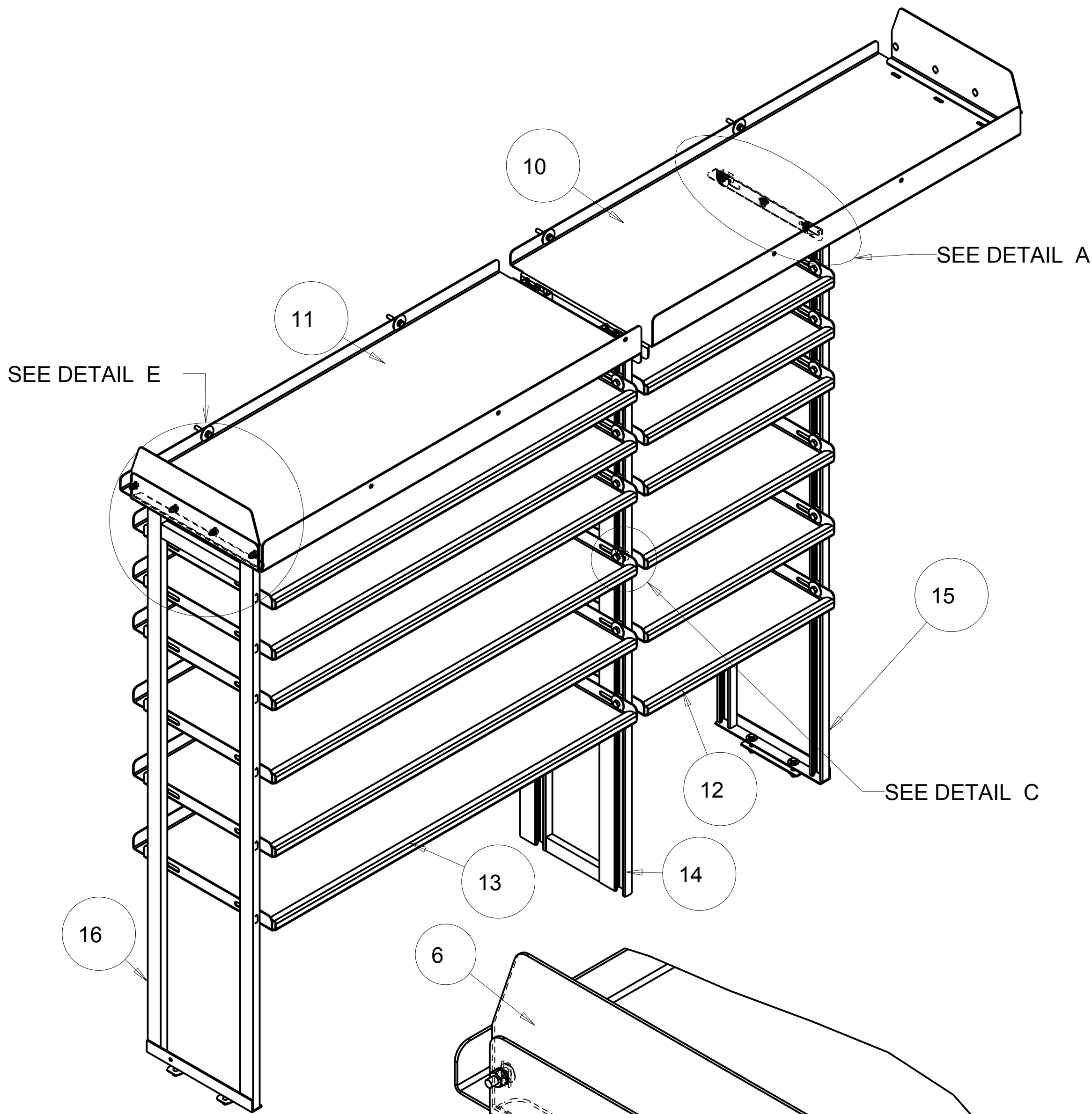


SECTION B-B

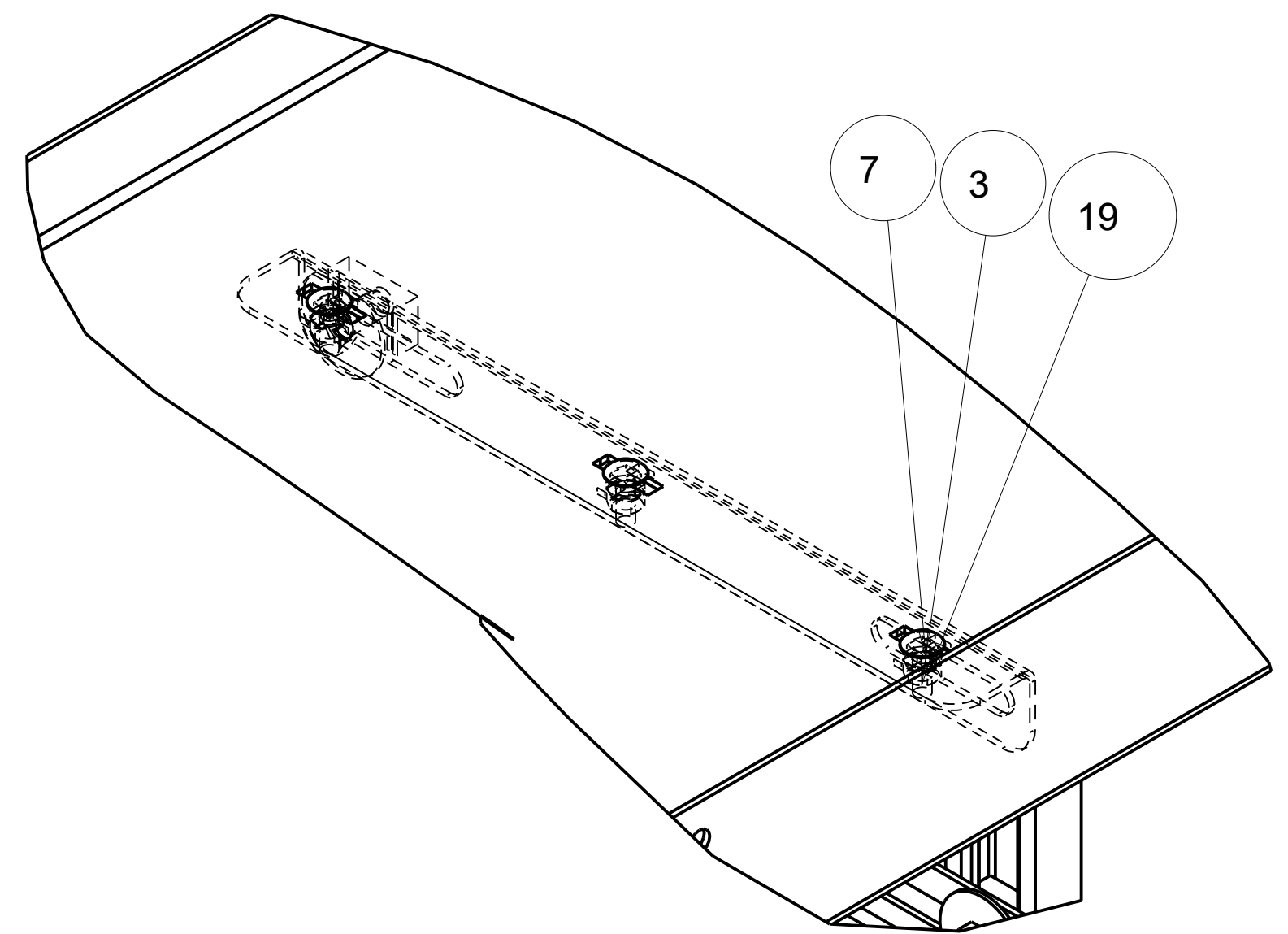


SECTION C-C

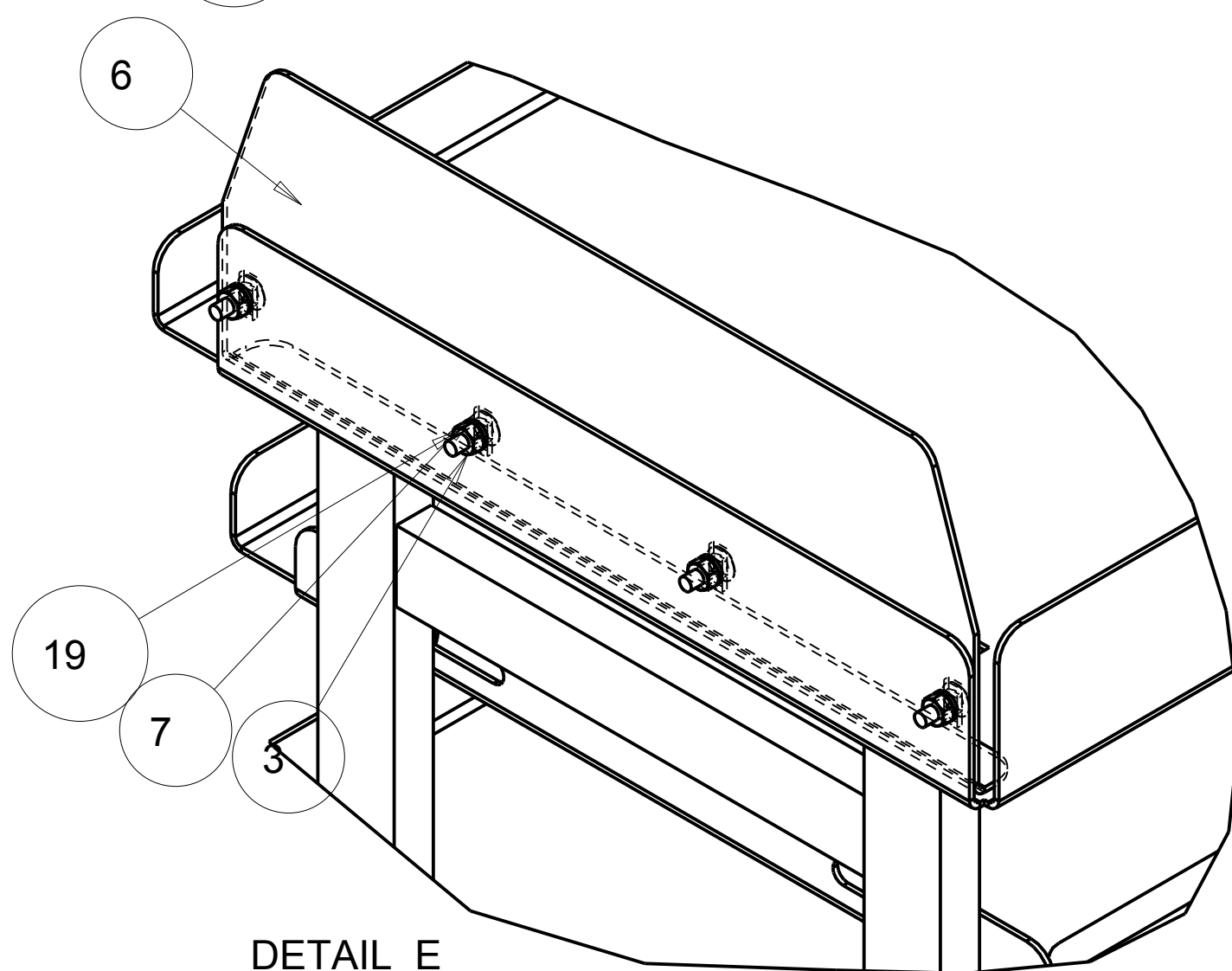
|                           |                          |  |  |  |
|---------------------------|--------------------------|--|--|--|
| CNUMBER<br><b>TRANSIT</b> | WEIGHT<br><b>145.267</b> | TOLERANCE UNLESS OTHERWISE SPECIFIED   |  <b>VT Hackney</b><br>A company of VT Systems | <br> |
| ROUTING<br><b>FINAL</b>   | MATL CODE<br><b>ZA</b>   | .XX=+/- .060<br>.XXX=+/- .030  |  |  |
| ITEM NO<br><b>385343</b>  | SHAPE DESC               |  | 252-946-6521<br>vtackney.com hackney.com kidron.com vtvisioncomms.com  |  |
| RAW_MATL                  | HRS<br><b>0.000</b>      | DESCRIPTION  |  |  |
| DRAWN BY<br><b>LCS</b>    | DATE<br><b>29-Nov-11</b> | <b>SHELF ASM.- DRIVERSIDE FORD TRANSIT SHELF<br/>         OPTION "24-46" 148"WB MED ROOF</b> |  |  |
| APPROVED BY               | DATE                     |  |  |  |
| SUPERSEDES                | SUPERSEDED BY            | SCALE<br><b>0.200</b>  | DWG NAME<br><b>P15C0524 Sheet 2 of 4</b>   |  |





TYP. SHELF HARDWARE  
DETAIL C  
SCALE 0.800



DETAIL A  
SCALE 0.500



DETAIL E  
SCALE 0.400

|                           |                   |                                       |  |   |
|---------------------------|-------------------|---------------------------------------|--|---|
| CNUMBER<br><b>TRANSIT</b> | WEIGHT<br>145.267 | TOLERANCE UNLESS OTHERWISE SPECIFIED  |  <b>VT Hackney</b><br>A company of VT Systems |  |
| ROUTING<br><b>FINAL</b>   | MATL CODE<br>ZA   | .XX=+/- .060<br>.XXX=+/- .030         |  |   |
| ITEM NO<br><b>385343</b>  | SHAPE DESC        |                                       | 252-946-6521<br>vthackney.com hackney.com kidron.com vtvisioncomms.com   |   |
| RAW_MATL                  | HRS<br>0.000      | DESCRIPTION                           | <b>SHELF ASM.- DRIVERSIDE FORD TRANSIT SHELF</b>   |   |
| DRAWN BY<br>LCS           | DATE<br>29-Nov-11 | <b>OPTION "24-46" 148"WB MED ROOF</b> |  |   |
| APPROVED BY               | DATE              | SCALE<br>0.125                        | DWG NAME<br>P15C0524 Sheet 3 of 4  |   |
| SUPERSEDES                | SUPERSEDED BY     |                                       |  |   |

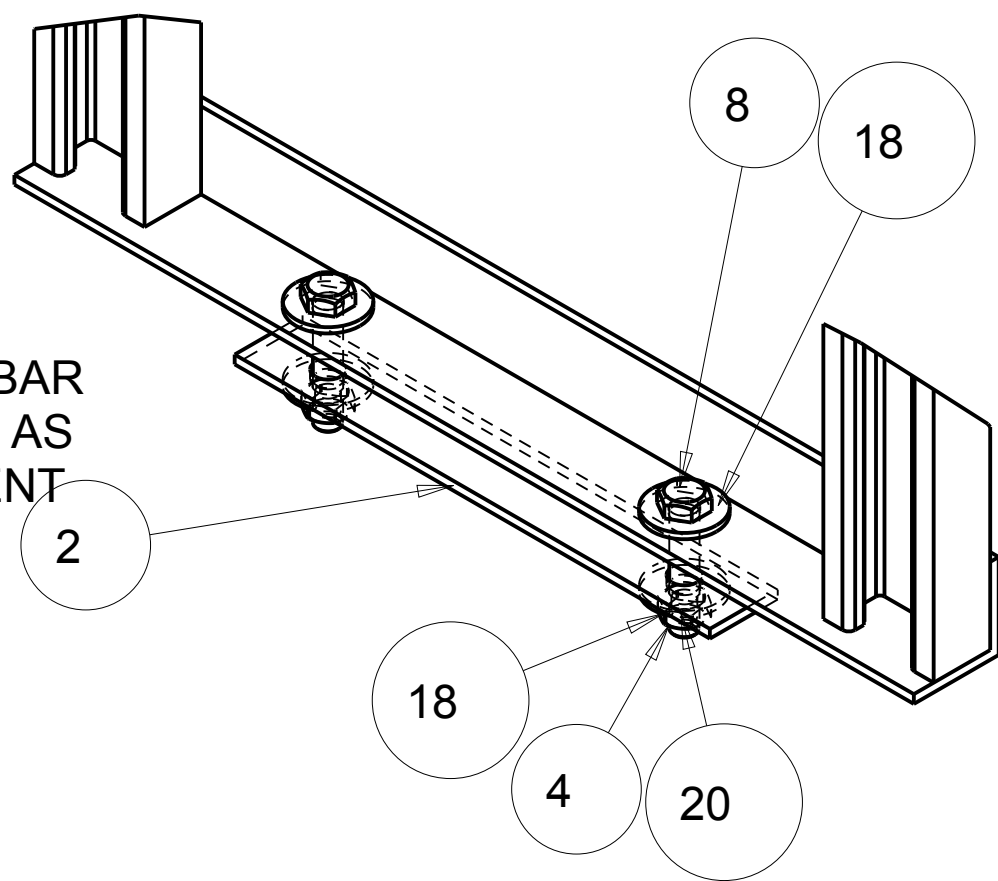
**Hackney**

**Kidron**

**VisionComms**

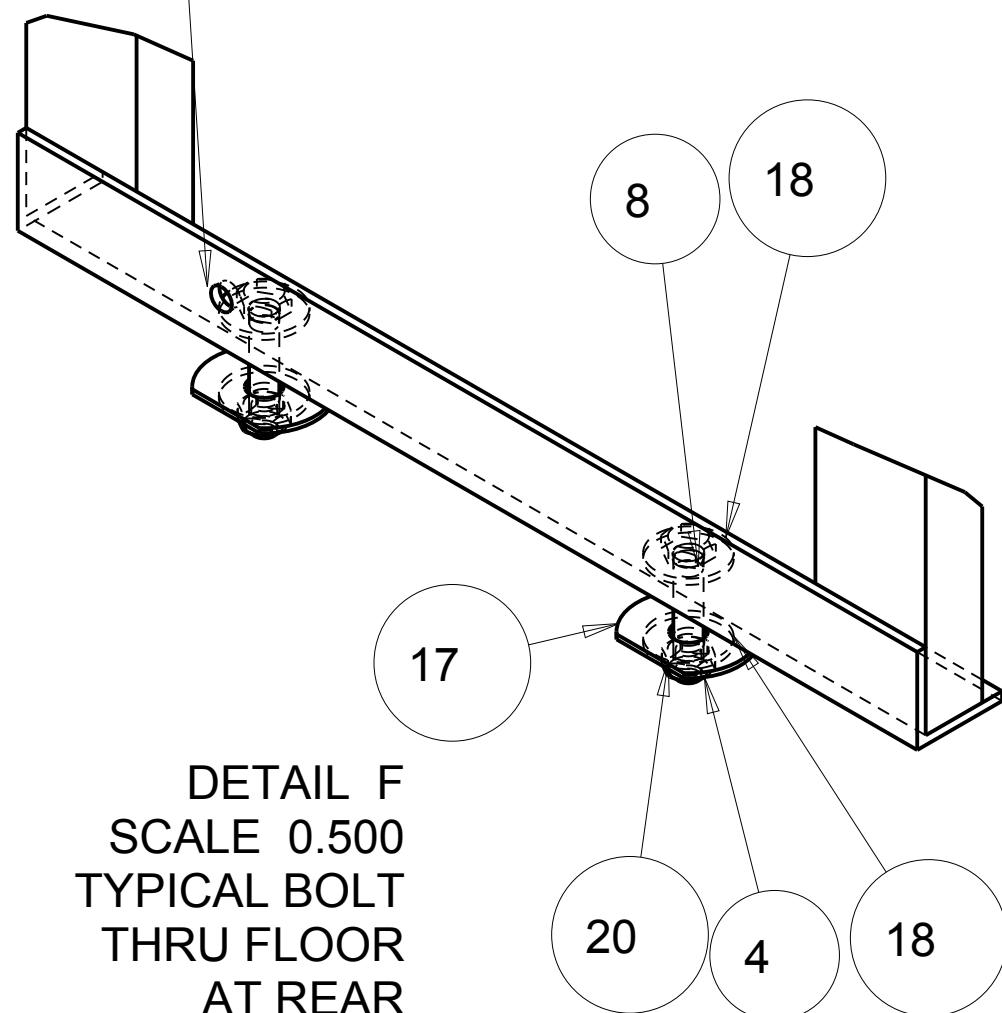
# ATTACHMENT DETAILS

INSTALL FLAT BAR UNDER FLOOR AS REINFORCEMENT



DETAIL D  
SCALE 0.500  
TYPICAL BOLT  
THRU FLOOR  
AT FRONT

NOTE: VERIFY THIS IS THE CORRECT REAR SECTION WITH HOLE



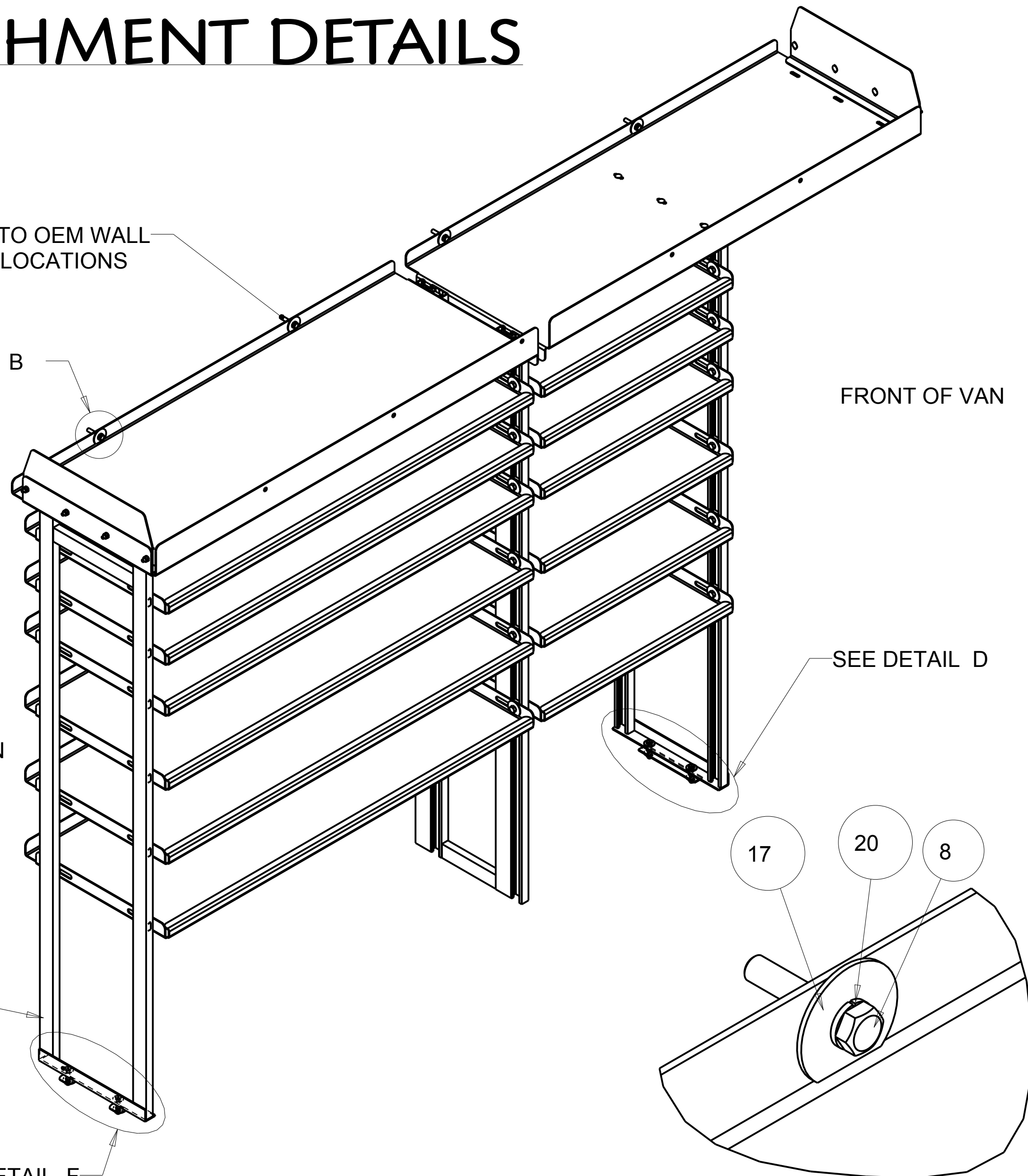
DETAIL F  
SCALE 0.500  
TYPICAL BOLT  
THRU FLOOR  
AT REAR

BOLT TO OEM WALL  
INSERTS (4) LOCATIONS

SEE DETAIL B

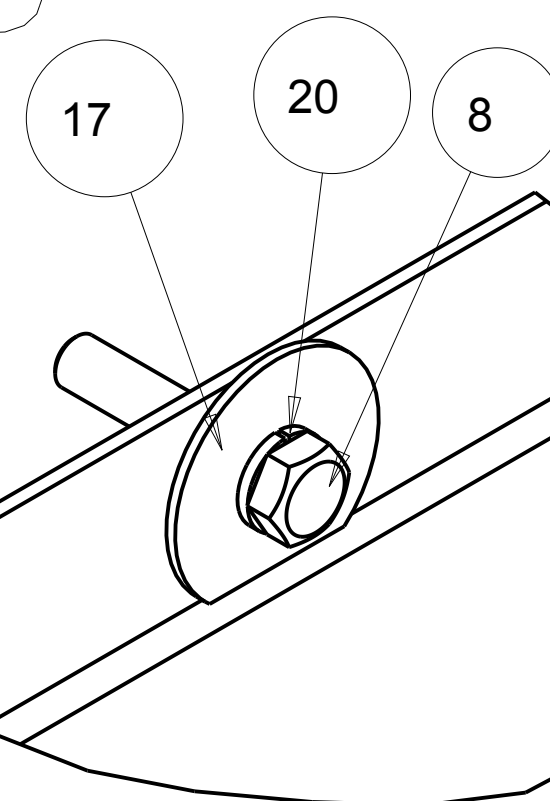
REAR OF VAN

SEE DETAIL F



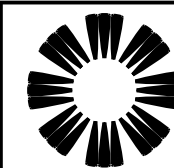
FRONT OF VAN

SEE DETAIL D



DETAIL B  
SCALE 1.000

|                   |                   |   |
|-------------------|-------------------|---|
| NUMBER<br>TRANSIT | WEIGHT<br>145.267 | TOLERANCE UNLESS<br>OTHERWISE SPECIFIED                                     |
| ROUTING<br>FINAL  | MATL CODE<br>ZA   | .XX=+/- .060<br>.XXX=+/- .030   |
| ITEM NO<br>385343 | SHAPE DESC        |   |
| RAW_MATL          | HRS<br>0.000      | DESCRIPTION   |
| DRAWN BY<br>LCS   | DATE<br>29-Nov-11 | vtackney.com hackney.com kidron.com vtvisioncomms.com                       |
| APPROVED BY       | DATE              | SHELF ASM.- DRIVERSIDE FORD TRANSIT SHELF<br>OPTION "24-46" 148"WB MED ROOF |
| SUPERSEDES        | SUPERSEDED BY     | SCALE<br>0.125  |
|                   |                   | DWG NAME<br>P15C0524 Sheet 4 of 4   |



**VT Hackney**  
A company of VT Systems

**Hackney**



**VisionComms**

252-946-6521

vtackney.com hackney.com kidron.com vtvisioncomms.com