

Make: Subaru

Model: 2022+ BRZ

Application: 3-PC Front Splitter

PACKAGE CONTENTS				TOOLS	
QTY		QTY		QTY	
1	Front Splitter - Center Piece	2	1/4" SAE Flat Washer		7/16" Socket or Wrench
2	Front Splitter - Side Piece				5/32" Hex Key
8	1/4"-20 x 1" Socket Buttonhead				Drill
14	1/4" USS Flat Washer				1/4" Drill Bit
8	1/4" Split Lock Washer				Marker
8	1/4"-20 Hex Nut				Box Cutter
					Dremel

INSTALLATION INSTRUCTIONS

Locate the crossed scribe lines shown under the front bumper. (Driver-side pictured, Passenger-side is mirror opposite)

1

Drill out those holes on each side of the bumper (L+R).

2

Continuation from Step 2. Drill out holes.

3

Hold up the side piece against the bumper and mark the hole closest to the wheel well for drilling.

4

DISCLAIMER FOR RALLY INNOVATIONS PRODUCTS: Buyers assume all risk and liability whatsoever for the installation and the use of Rally Innovations products. Rally Innovations products are sold as decorative accessories and should not be relied upon as protection for the vehicle or occupants in the event of a collision or roll over. Vehicles equipped with a supplemental restraint system (air bag) deployed by impact should not be modified by any aftermarket Light Bar or Skid Guard without first consulting the vehicle manufacturer. Rally Innovations, a subsidiary of Pentech Automotive assumes no liability for injury, loss, incidental or consequential damages in the event of a collision or roll over.



Drill out the hole.

5



Hold up the center piece against the bumper and mark the (2) middle holes for drilling.

6



Drill out the holes.

7



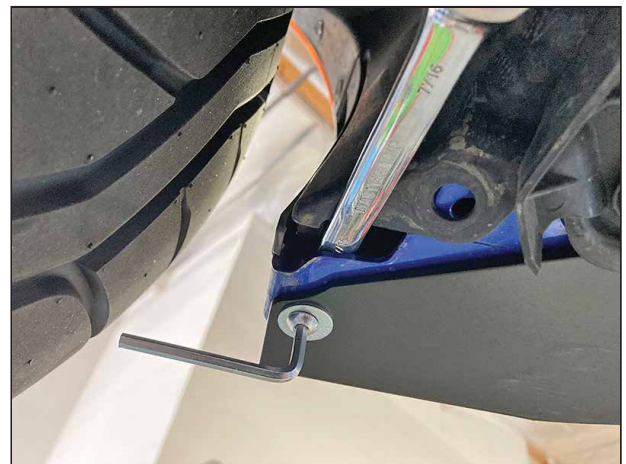
The bumper should look like the image above with the new holes.

8



Attach one side piece using (1) 1/4"-20 Buttonhead Bolt, (2) 1/4" USS Flat Washer, (1) 1/4" Split Lock Washer, and (1) 1/4"-20 Hex Nut on the center mounting hole. (Note: the splitter and bumper are sandwiched between the (2) USS Flat Washers)

9



Attach the rear hole (by the fin) using the same hardware as the previous step with the exception of the inner flat washer being a (smaller) SAE Flat Washer. Repeat on the opposite side.

10



Attach the side piece together with the center piece using the same hardware as the first hole (1) 1/4"-20 Buttonhead Bolt, (2) 1/4" USS Flat Washer, (1) 1/4" Split Lock Washer, and (1) 1/4"-20 Hex Nut on the center mounting hole. Continue the process with the rest of the holes.

11



Remove the engine splash guard and both front bumper supports from underneath the vehicle.

12



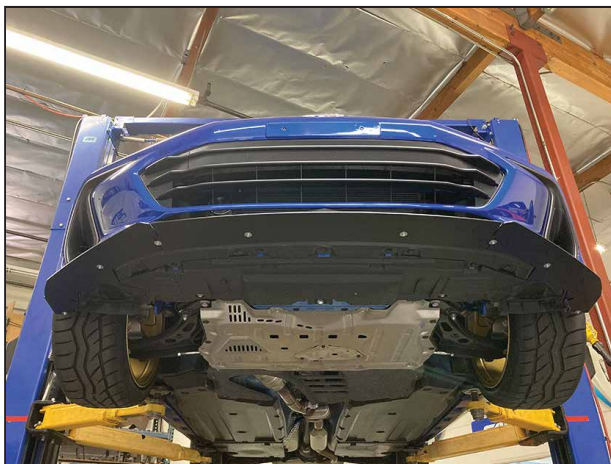
Inside of bumper cover shown with orientation of hardware. Reassemble both front bumper supports and engine splash guards.

13



Complete assembly shown.

14



Front view.

15



Top view.

16

DISCLAIMER FOR RALLY INNOVATIONS PRODUCTS: Buyers assume all risk and liability whatsoever for the installation and the use of Rally Innovations products. Rally Innovations products are sold as decorative accessories and should not be relied upon as protection for the vehicle or occupants in the event of a collision or roll over. Vehicles equipped with a supplemental restraint system (air bag) deployed by impact should not be modified by any aftermarket Light Bar or Skid Guard without first consulting the vehicle manufacturer. Rally Innovations, a subsidiary of Pentech Automotive assumes no liability for injury, loss, incidental or consequential damages in the event of a collision or roll over.