

Make: Subaru

Model: 2022+ WRX

Application: Rally Light Bar

PACKAGE CONTENTS				TOOLS	
QTY		QTY		QTY	
1	Rally Light Bar	6	3/8"-16 Hex Nut	2	3/8"-16 x3/4" Hex Bolt
2	Lower Mounting Brackets	2	1/2" (L) Cylindrical Alum. Spacers	2	3/8"-16 x1.75" Hex Bolt
1	License Plate Bracket (VB WRX)	2	3/8" (L) Cylindrical Nylon		
2	3/8"-16 x 1.5" Hex Bolt	2	M8x40mm Flange Head Bolt		
12	3/8" SAE Flat Washer	2	M6x16mm Flange Head		
4	3/8" Split Lock Washer	2	M6 Well Nut		

10mm, 12mm Socket/Wrench
 13mm Socket/Wrench
 9/16" Socket/Wrench
 Panel Removal Tool
 Utility Knife

INSTALLATION INSTRUCTIONS

Remove the engine splash guard by removing the fasteners shown above.

1

Remove these fasteners in both wheel wells.

2

Remove the 12mm-head M8 bolt shown.

3

Repeat on the passenger side.

4

DISCLAIMER FOR RALLY INNOVATIONS PRODUCTS: Buyers assume all risk and liability whatsoever for the installation and the use of Rally Innovations products. Rally Innovations products are sold as decorative accessories and should not be relied upon as protection for the vehicle or occupants in the event of a collision or roll over. Vehicles equipped with a supplemental restraint system (air bag) deployed by impact should not be modified by any aftermarket Light Bar or Skid Guard without first consulting the vehicle manufacturer. Rally Innovations, a subsidiary of Pentech Automotive assumes no liability for injury, loss, incidental or consequential damages in the event of a collision or roll over.

Driver side bracket



Locate the driver-side lower mounting bracket.

5



Install the bracket in the orientation shown. Use the previously removed 12mm-head bolt to loosely fasten it in place on the mounting hole to the left. Tighten it just a few threads.

6



Insert the 1/2" cylindrical aluminum spacer between the right mounting hole on the bracket and the vehicle chassis.

7



Insert the M8x40mm flangehead bolt through the bracket and into the chassis. Tighten down.

8



Remove the M8 bolt inserted in step 6. This hole will be secured at a later step 17.

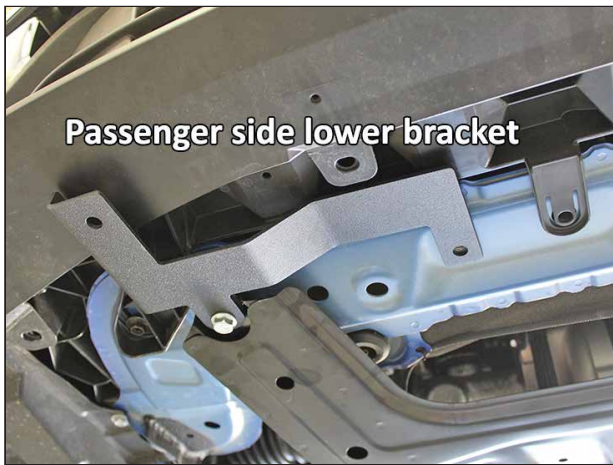
9

Driver side lower bracket



Driver-side bracket installed.

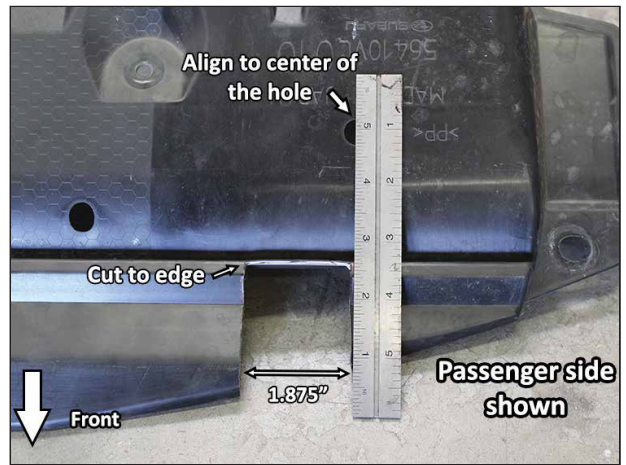
10



Passenger side lower bracket

Repeat these steps on the passenger-side lower mounting bracket.

11



The engine splash guard needs to be trimmed to fit the lower brackets. Take a straight edge and mark the area to be cut out. Use a utility knife to score the plastic and then proceed with more cuts until the desired shape is removed.

12



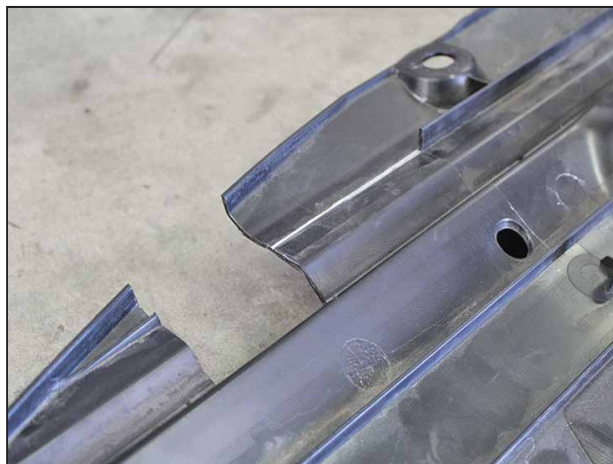
Flip the splash guard over (so it's as if you're viewing it from inside the engine bay). Adjacent to the cut-out just made, trim the rib shown (3.25" long). Use the utility knife again.

13



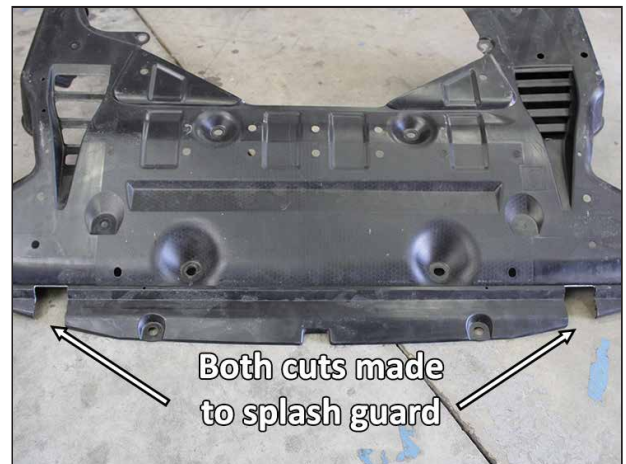
The finished product should like shown.

14



Repeat trim steps on the driver side.

15



Trimmed splash guard.

16



Splash guard reinstalled.
Reinstall factory skid plate using the original hardware. The lower bracket holes left open earlier are secured with the skid plate hardware (refer to step 9).

17



Use the factory front license plate mounting holes to mount the License Plate Bracket. If bumper does not have these holes, locate the factory indentations on the bumper cover and drill them out to 1/2".

18



Insert the included M6 well nuts into the holes.

19



Bumper cover with well nuts installed.

20



License plate bracket installed with (2) M6 flange head bolts

21



Next place the (2) cylindrical nylon spacers on top of the license plate mounting flanges.

22



Mount the light bar to the license plate bracket with (1) 3/8"-16 x1.5" Hex Bolts, (2) 3/8" Flat Washers, (1) 3/8" Split Lock Washer, and (1) 3/8" Hex Nut on each hole.

23



Mount the light bar to the lower brackets using (1) 3/8"-16x 3/4" Hex Bolt, (2) 3/8" Flat Washers, (1) 3/8" Split Lock Washer, and (1) 3/8" Hex Nut on each hole.

24



Completed assembly view from under vehicle.

25



Completed assembly shown.

26

Torque Specs:

M6:10 ft/lb

M8: 23 ft/lb

3/8": 33 ft/lb