

Make: Subaru

Model: 2019+ Forester

Application: Rally Light Bar

| PACKAGE CONTENTS |                            |     |                          | TOOLS |  |
|------------------|----------------------------|-----|--------------------------|-------|--|
| QTY              |                            | QTY |                          | QTY   |  |
| 1                | Rally Light Bar            | 2   | 3/8"-16 x 1.00" Hex Bolt | 8     | 3/8" Flat Washer                       |
| 2                | Lower Brackets             | 4   | 3/8"-16 Hex Nut          | 2     | M6 x50mm Bolt                          |
| 1                | Upper Mounting Brace       | 4   | 3/8" Lock Washer         | 2     | M8 x25mm Bolt                          |
| 2                | 5/16" Bolt Plate           | 2   | 5/16" Flat Washer        | 2     | 5/16" USS Flat Washer (for Wilderness) |
| 2                | 1.25" Long Aluminum Spacer | 2   | 5/16" Split Lock Washer  |       |  |
| 2                | 3/8"-16 x 2.50" Hex Bolt   | 2   | 5/16" Hex Nut            |       |  |

Flathead Screwdriver  
 Philips Screwdriver  
 Cutting Tool  
 Sander/Grinder  
 Socket Wrench  
 10mm, 12mm, 13mm, 1/2" Socket  
 9/16" Wrench and Socket

## INSTALLATION INSTRUCTIONS

Remove the front splash guard and locate the holes shown above.

(Wilderness models, see Addendum A - Splash guard removal)

**1**

Insert (2) 5/16" Bolt Plates through the holes shown in Step 1.

**2**

5/16" Bolt Plate inserted.

**3**

Remove (2) M6 bolts shown above.

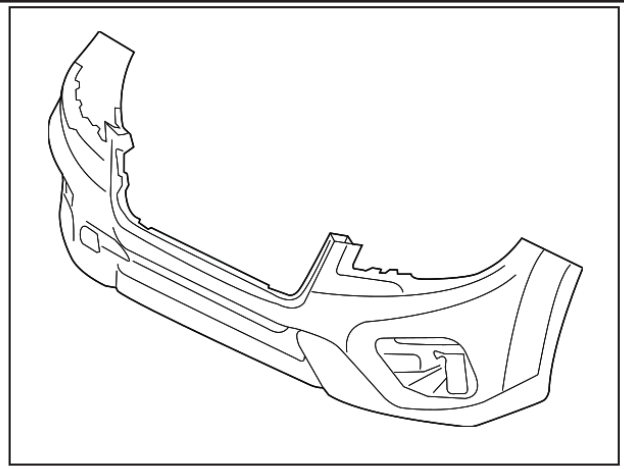
**4**

DISCLAIMER FOR RALLY INNOVATIONS PRODUCTS: Buyers assume all risk and liability whatsoever for the installation and the use of Rally Innovations products. Rally Innovations products are sold as decorative accessories and should not be relied upon as protection for the vehicle or occupants in the event of a collision or roll over. Vehicles equipped with a supplemental restraint system (air bag) deployed by impact should not be modified by any aftermarket Light Bar or Skid Guard without first consulting the vehicle manufacturer. Rally Innovations, a subsidiary of Pentech Automotive assumes no liability for injury, loss, incidental or consequential damages in the event of a collision or roll over.



Install Lower Brackets (L+R) using the factory M6 bolt (do not tighten all the way). Install (1) 5/16" Flat Washer, Lock Washer, and Hex Nut onto the 5/16" Bolt Plate. Repeat on the passenger side.

5



Remove front bumper cover to gain access to mounting points for the Upper Brace.

(Wilderness models, see Addendum A - Front Bumper Removal)

6



Remove the (2) M6 bolts shown above (L+R). These holes are where the Upper Brace will attach to.

7



Attach Upper brace to the same holes in Step 7 using (1) 1-1/4" Aluminum Spacers and (1) M6x50mm Bolt, per side.

8



Upper Brace installed.

9



Reinstall air diverter and front bumper cover.

(Wilderness models, see Addendum A - Step 10)

10



Attach Light Bar to Upper Brace with (1) 3/8"-16 x 1.00" Hex Bolt, (2) 3/8" Flat Washers, (1) 3/8" Lock Washer, and (1) 3/8" Hex Nut per side. Assemble loosely.

11



Attach Light Bar to Lower Brackets with (1) 3/8"-16 x 2.5" Hex Bolt, (2) 3/8" Washers, (1) 3/8" Lock Washer, and (1) 3/8" nut, per side. Tighten all bolts. Torque 3/8" hardware to 33 ft-lbs, 5/16" to 19 ft-lbs, and M6 to 11 ft-lbs. (Wilderness models, see Addendum A - Step 11-12, prior to doing this step)

12



**Splash Guard Trim:**

Trim splash guard material **inside** the marked area.

(Wilderness models, see Addendum A - Step 9)

13



**Splash Guard Trim:** *Pictured: Inner Side*

Note: Cut 1" from the rib (shown above).

14



Reinstall splash guard with included M8 x25mm bolts and factory plastic clips. Tighten M8 bolts to 23 ft-lbs.

(Wilderness models, see Addendum A - Step 13)

15



Completed assembly.

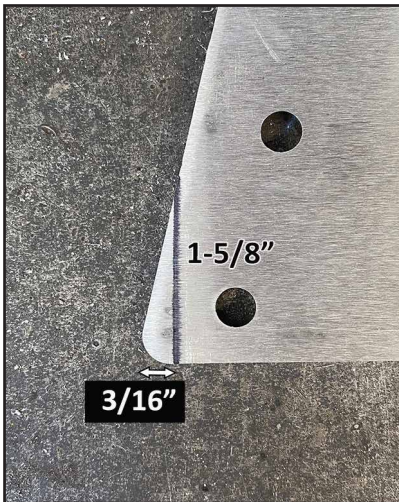
16

# Instructions for Use With Primitive Front Skid Plate



Towards the front of the skid plate, trim outlined area shown, about 1-inch above the bend line.

Conduct step on both sides of the skid plate to ensure the skid plate clears the rally light bar lower mounting brackets.



## Front Skid Plate Front Lip

Trim the corner off of the Front Lip on both sides.



Completed assembly shown.



# Addendum A.

## Instructions for Use With 2022+ Forester Wilderness

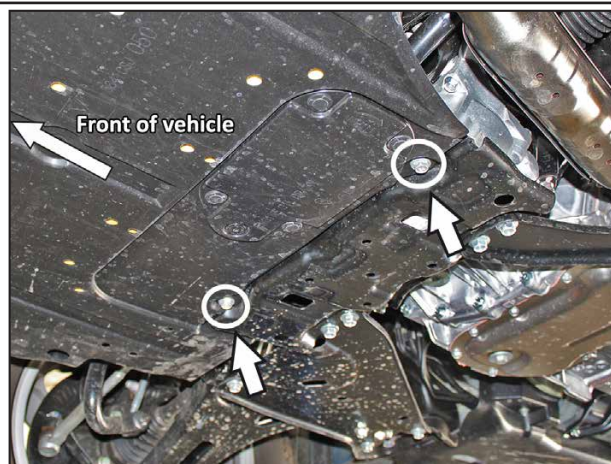
Note: Installation on the 2022+ Wilderness models is essentially the same as previous models with a few differences in the removal of the front bumper, splash guard and trimming of the splash guard to clear the bar. These exceptions are outlined below. Please follow the instructions as noted otherwise.



### Splash Guard Removal:

Remove the fasteners and screws which hold the splash guard in place.

1



### Splash Guard Removal Cont'd:

Remove the screws toward the rear of the splash guard.

2



### Splash Guard Removal Cont'd:

Remove the fasteners in each front wheel well.

3



### Front Bumper Removal:

Remove the fasteners and unplug the harness at the air diverter panel above the front bumper.

4

DISCLAIMER FOR RALLY INNOVATIONS PRODUCTS: Buyers assume all risk and liability whatsoever for the installation and the use of Rally Innovations products. Rally Innovations products are sold as decorative accessories and should not be relied upon as protection for the vehicle or occupants in the event of a collision or roll over. Vehicles equipped with a supplemental restraint system (air bag) deployed by impact should not be modified by any aftermarket Light Bar or Skid Guard without first consulting the vehicle manufacturer. Rally Innovations, a subsidiary of Pentech Automotive assumes no liability for injury, loss, incidental or consequential damages in the event of a collision or roll over.



**Front Bumper Removal Cont'd:**

Remove the fasteners shown in each front wheel fender, where the front bumper meets the fender.

5



**Front Bumper Removal Cont'd:**

Remove fasteners in the fog light splash guard area.

6



**Front Bumper Removal Cont'd:**

Remove front bumper cover by slowly pulling at the corners near the fenders and the headlights. Unplug fog lights from the wire harness behind the bumper cover to release the front bumper cover.

7



Front bumper cover removed. Remove M6 screws shown (same screws shown in Step 7 of the original instructions).

8



Trim the splash guard **inside** the areas shown to clear the light bar upon reinstallation.

9



Reinstall front bumper with the upper bracket entering through the lower holes in the grille.

10



**Front Bumper Reinstallation:**

Drill a 1/2" hole in the lower bumper mounting tabs shown above the lower mounting brackets. **Note:** This will help clearance the area for the 3/8"-16 bolt that will thread through the lower bracket and rally light bar.

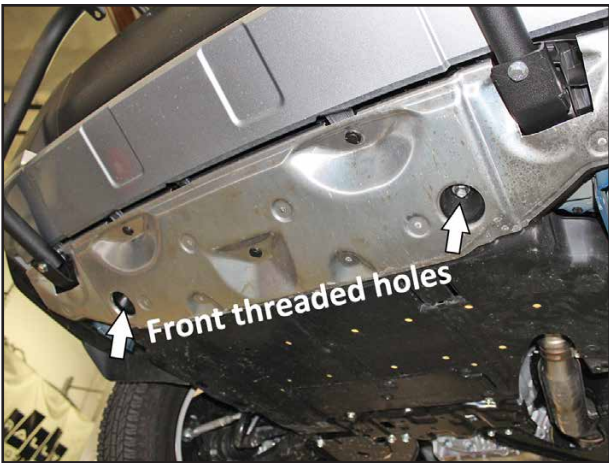
11



**Front Bumper Reinstallation:**

Repeat the same on the passenger side.

12



Reinstall all plastic fasteners in their respective locations. Install (1) M8 Flange Bolt and (1) 5/16" (Wide) Flat Washer to each of the threaded holes near the front of the splash guard. Reuse the factory screws in the rear screw locations.

7



Completed assembly shown.

8