

Make: Subaru

Model: 2020+ Impreza

Application: Rally Light Bar

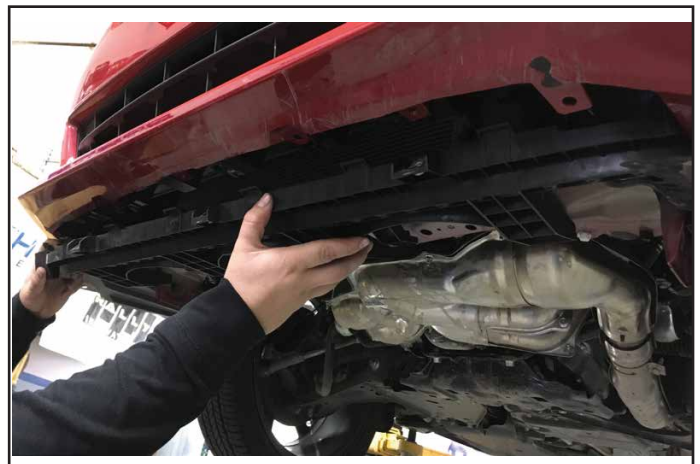
PACKAGE CONTENTS				TOOLS
QTY		QTY		
1	Rally Light Bar	4	3/8"-16 x 1.75" Hex Bolt	Flathead Screwdriver 7/16" Wrench or Socket 9/16" Wrench or Socket 11mm, 12 mm Wrench/Socket Sharp Cutting Tool
1	Mounting Brace	4	3/8" -16 Nut	
1	License Plate Bracket	4	3/8" Lock Washer	
2	3/8" Long Nylon Spacer	6	3/8" Flat Washer	
2	M8-1.25x 25mm	2	5/16" Washer & Lock Washer	
2	3/8"-16 x 3/4" Hex Bolt	2	1/4" Lag Screw & Washer	

INSTALLATION INSTRUCTIONS



Remove the splash guard.

1



Remove the plastic lower bumper support from lower radiator support. This piece will not be reinstalled.

2



Identify the two mounting points to install the mounting brace.

3



Install the mounting brace, using (1) M8 bolt, (1) 5/16 lock washer, and (1) 5/16 washer, per side. Tighten to 15 lb-ft.

4

DISCLAIMER FOR RALLY INNOVATIONS PRODUCTS: Buyers assume all risk and liability whatsoever for the installation and the use of Rally Innovations products. Rally Innovations products are sold as decorative accessories and should not be relied upon as protection for the vehicle or occupants in the event of a collision or roll over. Vehicles equipped with a supplemental restraint system (air bag) deployed by impact should not be modified by any aftermarket Light Bar or Skid Guard without first consulting the vehicle manufacturer. Rally Innovations, a subsidiary of Pentech Automotive assumes no liability for injury, loss, incidental or consequential damages in the event of a collision or roll over.



Install the license plate mounting bracket, using the supplied lag screws and washers.

5



Attach the lightbar from the bottom, using (1) 3/8" washer, (1) 3/8" lock washer, and (1) 3/8-16x3/4" bolt. Keep loose for adjustments.

6



Attach the lightbar to the license plate bracket, with (2) 3/8" washers, (1) plastic spacer, (1) 3/8" lock washer, (1) 3/8-16x1.75" bolt, and (1) 3/8-16 nut, per side. Keep loose for adjustments. Once in position, Tighten 3/8-16 hardware to 30 ft-lb.

7



Use 3/8" hardware on lower tube to mount lights.

8



Optional - Trim Splash Guard

Loosely attach the splash guard. Mark area around the mounting brace to trim for clearance. Mounting brace shown and light bar unmounted for clarity.

9



Completed assembly.

10