

Make: Subaru

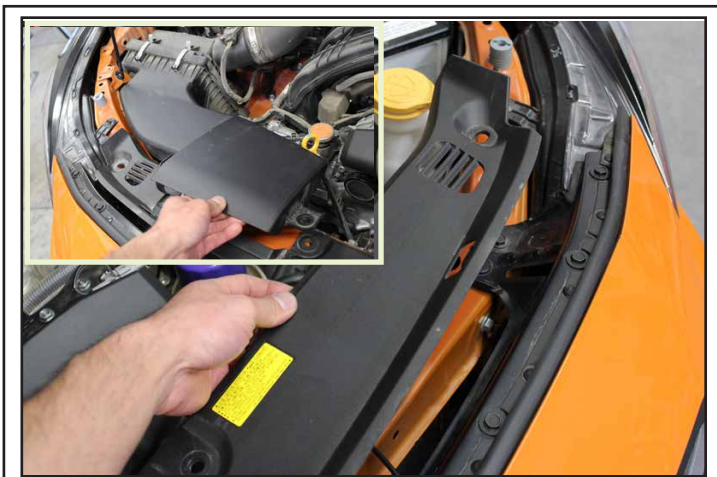
Model: 2018+ Subaru XV Crosstrek

Application: Ultimate Light Bar

PACKAGE CONTENTS				TOOLS	
QTY		QTY		QTY	
1	Ultimate Light Bar	4	1/4" Flat Washer	2	5/16" Bolt Plate
1	Skid Guard	4	3/8"-16 x 3/4" Hex Bolt	2	5/16" Hex Nut
1	Lower Mounting Brace	2	3/8"-16 x 1" Hex Bolt	4	5/16" Lock Washer
2	Upper Mounting Brackets	2	3/8"-16 x 2" Hex Bolt	2	5/16" USS Flat Washer
2	Grille Brackets	4	3/8"-16 Hex Nut	2	5/16" SAE Flat Washer
2	1/4" Hex Nut	8	3/8" Lock Washer		
2	1/4"-20 x 3/4" Hex Bolt	10	3/8" Flat Washer		
2	1/4" Lock Washer	2	M8 x 25 Flanged Hex Bolt		
2	Round Spacer	2	M8 x 40 Flanged Hex Bolt		

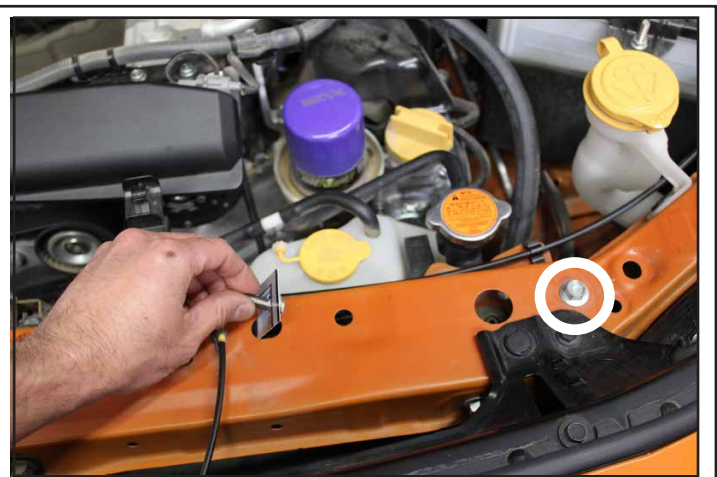
- Flathead/Phillips Screwdriver
- 7/16" Wrench or Socket
- 9/16" Wrench or Socket
- 10mm Socket
- 12mm Socket
- 13mm Socket
- Cutting Tool
- Panel Removal Tool

INSTALLATION INSTRUCTIONS



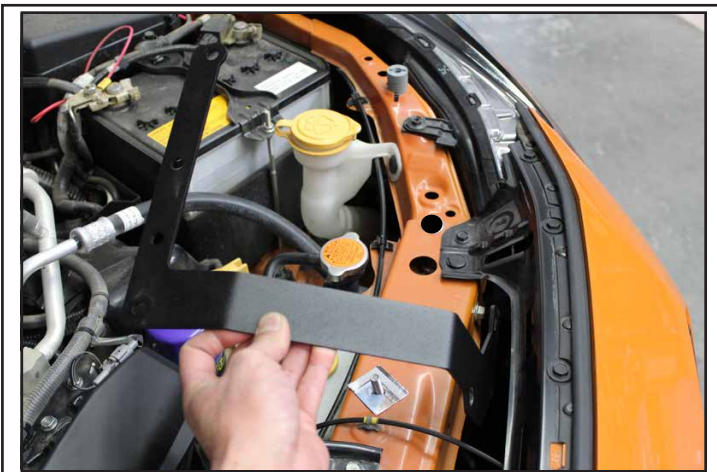
Remove top plastic shroud and intake duct.

1



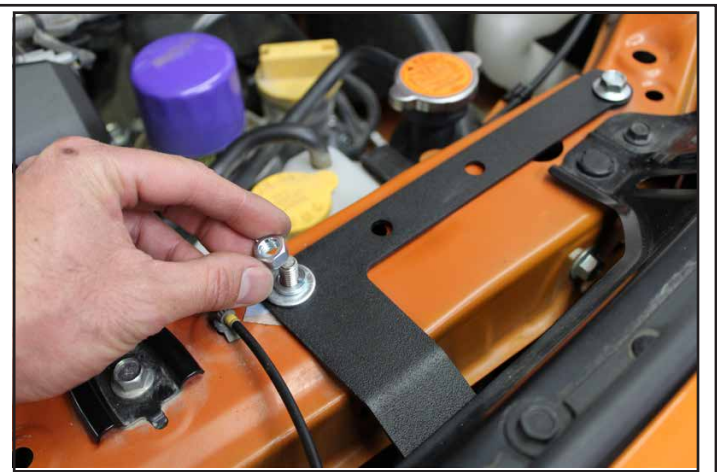
Insert bolt plate into the hole of the upper radiator support, as shown. Remove the factory M8 bolt, circled.

2



Set the upper mounting bracket in place above the bolt plate.

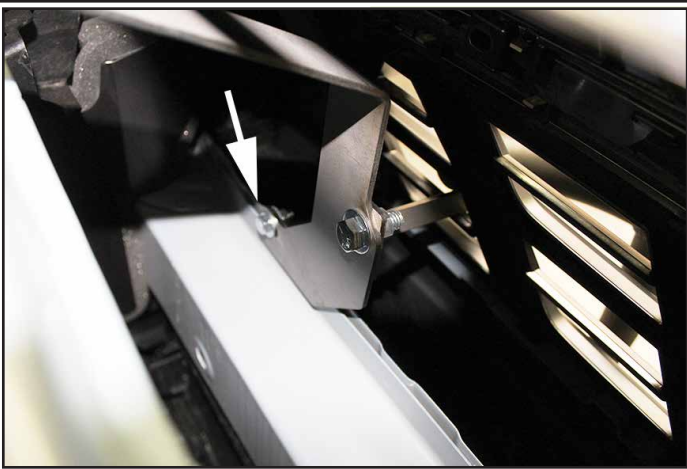
3



Place (1) 5/16" flat washer, (1) 5/16" lock washer, and (1) 5/16" hex nut onto threaded bolt plate stud. Replace the factory M8 bolt with supplied, longer M8 x 25 flanged hex bolt. Loosely fasten nut & bolt by hand.

4

DISCLAIMER FOR RALLY INNOVATIONS PRODUCTS: Buyers assume all risk and liability whatsoever for the installation and the use of Rally Innovations products. Rally Innovations products are sold as decorative accessories and should not be relied upon as protection for the vehicle or occupants in the event of a collision or roll over. Vehicles equipped with a supplemental restraint system (air bag) deployed by impact should not be modified by any aftermarket Light Bar or Skid Guard without first consulting the vehicle manufacturer. Rally Innovations, a subsidiary of Pentech Automotive assumes no liability for injury, loss, incidental or consequential damages in the event of a collision or roll over.



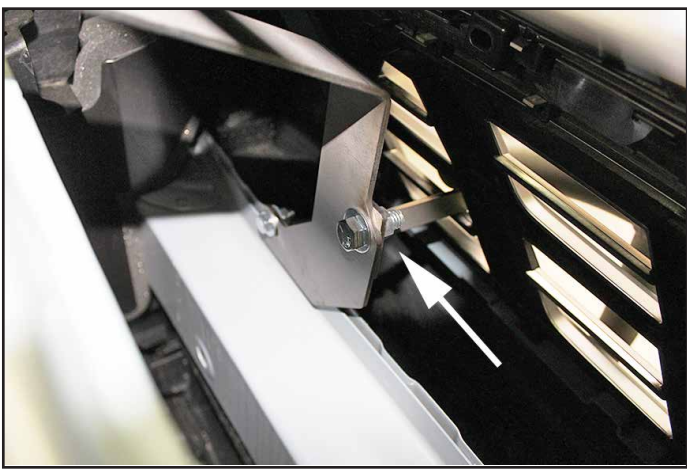
Attach lower portion of the Upper Mounting Bracket to the core support using (1) 1/4"-20 x 3/4" bolt, (2) 1/4" Flat Washers, (1) 1/4" Lock Washer and (1) 1/4"-20 Hex Nut. Torque 1/4" hardware to 10ft-lb.

5



Insert Grille Bracket through grille where it will attach to Upper Mounting Bracket using 3/8" hardware.

6



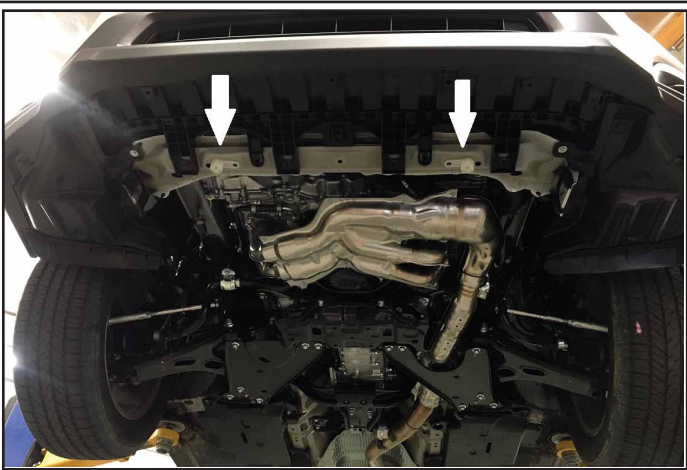
Slip (1) 3/8" Lock Washer and (1) 3/8" Flat Washer onto (1) 3/8"-16 x 1" Bolt and thread into the Grille Bracket. Keep the bolt loose for now. (Torque spec: 33 ft-lb)
(See Addendum for mounting hole revision to Upper Bracket)

7



Note the orientation of the bracket above when attaching the bar to it later.

8



Remove the splash guard. Identify the two mounting points (indicated by arrows) to install the mounting brace. Remove the OEM plastic spacers and replace with provided metal spacers.

9



Install the Lower Mounting Brace, using (1) Round Spacer, (1) M8 x 40mm bolt, (1) 5/16" Lock Washer, and (1) 5/16" Flat Washer, per side. Keep loose for now. (Torque to 16 lb-ft.)

10

DISCLAIMER FOR RALLY INNOVATIONS PRODUCTS: Buyers assume all risk and liability whatsoever for the installation and the use of Rally Innovations products. Rally Innovations products are sold as decorative accessories and should not be relied upon as protection for the vehicle or occupants in the event of a collision or roll over. Vehicles equipped with a supplemental restraint system (air bag) deployed by impact should not be modified by any aftermarket Light Bar or Skid Guard without first consulting the vehicle manufacturer. Rally Innovations, a subsidiary of Pentech Automotive assumes no liability for injury, loss, incidental or consequential damages in the event of a collision or roll over.



Slide the Skid Guard between the brace and bumper cover. Fasten with (1) 3/8" x 3/4" Hex Bolt, (2) Flat Washers, (1) Lock Washer, and (1) Hex Nut per side. (Torque spec: 33 ft-lb)

11



Fasten Ultimate Light Bar to Skid Guard with (1) 3/8" x 3/4" Hex Bolts, (1) Lock Washers, and (1) Flat Washer on each end. Keep bolts loose for now. (Torque spec: 33 ft-lb)

12



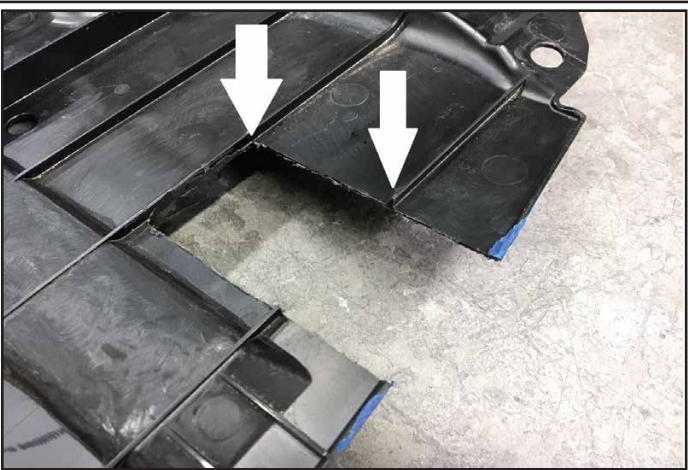
Attach Ultimate Light Bar to the Upper Mounting Tubes and fasten with (1) 3/8" x 2" Hex Bolt and (1) Flat Washer. Then, tight Upper Bracket bolt from Step 7. (Torque spec: 33 ft-lb)
Note: May need to apply pressure to Tubes to fit.

13



Ensure all bolts are torqued to spec before proceeding. Drill a 9/16" hole 4 inches away from the center of the left mounting tab on the underside of the intake duct. Reinstall plastic shroud and intake duct.

14



Trim and reattach splash guard. The trimming area is up to the 2nd plastic rib (as shown above). The approximate area is 4 inches by 2.5 inches, for each side of the splash guard.

15

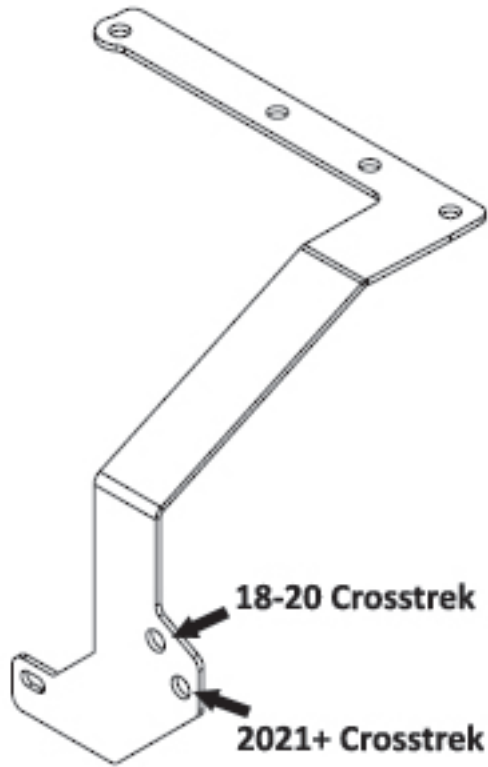


Completed assembly shown with Baja Designs XLR lights.

16

Addendum

2021+ Crosstrek



Upper Bracket hole added for attachment point of Grille Bracket for 2021+ Crosstrek.