

Make: Subaru

Model: 2017-2019 Impreza

Application: Fog Light Conversion

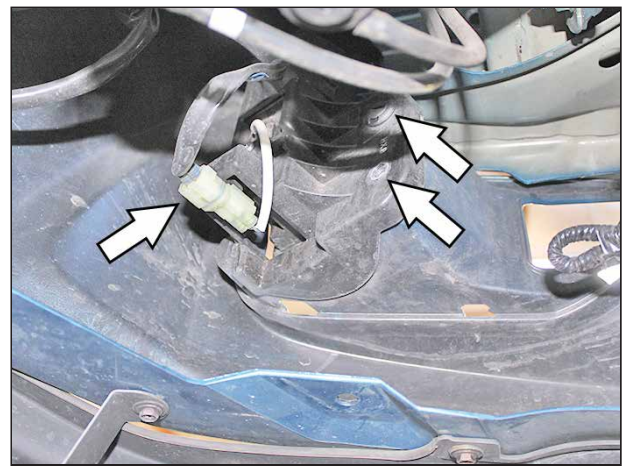
PACKAGE CONTENTS				TOOLS	
QTY		QTY		QTY	
2	Conversion Brackets				10mm Socket/Wrench
4	1/4" SAE Flat Washer				7/16" Socket/Wrench
1	Wiring Adapter Kit				5/32" Hex Key
					Stubby Flathead Screwdriver
					Panel Removal Tool

INSTALLATION INSTRUCTIONS



Pull down the fog light splash guard by removing the fasteners shown above with a Panel Removal tool.

1



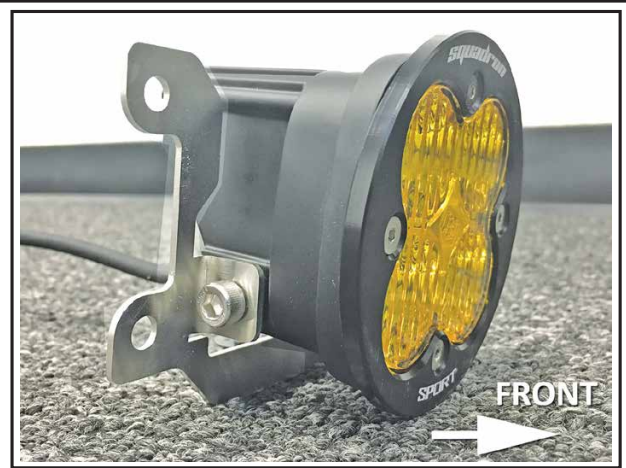
Remove the factory fog light by undoing the factory fasteners and unplugging it from the wire harness. One of the fasteners is a 10mm-head screw and the other is a plastic screw to be undone with a stubby flat head screwdriver.

2



Remove the factory fog light bezel by prying carefully around it with a plastic panel removal tool.

3



Assemble the new lights into the conversion brackets like shown.

4

DISCLAIMER FOR RALLY INNOVATIONS PRODUCTS: Buyers assume all risk and liability whatsoever for the installation and the use of Rally Innovations products. Rally Innovations products are sold as decorative accessories and should not be relied upon as protection for the vehicle or occupants in the event of a collision or roll over. Vehicles equipped with a supplemental restraint system (air bag) deployed by impact should not be modified by any aftermarket Light Bar or Skid Guard without first consulting the vehicle manufacturer. Rally Innovations, a subsidiary of Pentech Automotive assumes no liability for injury, loss, incidental or consequential damages in the event of a collision or roll over.



Add (2) 1/4" Flat Washers to the factory 10mm-head screw.

5



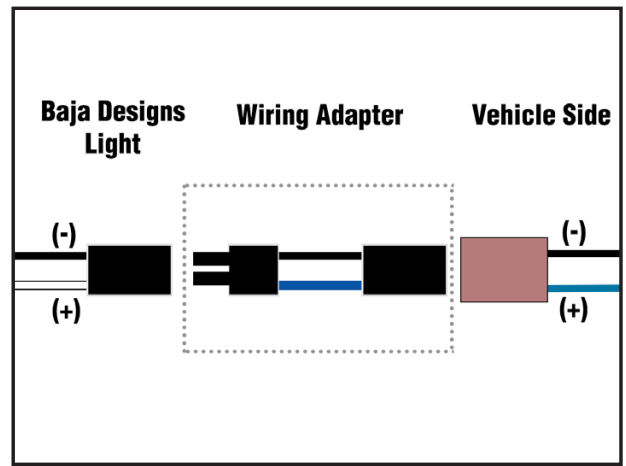
Install the new light assemblies in the reverse order of the factory light removal. Insert the factory 10mm-head screw in its original position with the (2) 1/4" Flat Washers on it. Reinstall the factory plastic fastener in its original position.

6



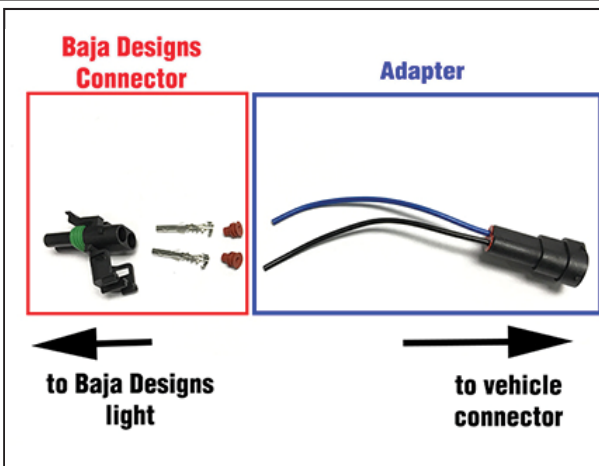
Review the light position in the front bumper. Reinstall the fog light bezel on the bumper.

7



Installing Pigtail Adapter (Optional): Note the orientation of the optional pigtail adapter.

8



Assemble the Baja Designs light connector onto the optional pigtail adapter in the order shown above. Remember to note the polarity shown in the previous step before proceeding, you only get one shot installing the connector.

9



Reinstall the fog light splash guard and repeat process on the passenger side light.

Completed assembly.

10