

Make: Subaru

Model: 2018-2020 Crosstrek

Application: Rally Light Bar

PACKAGE CONTENTS				TOOLS	
QTY		QTY		QTY	
1	Rally Light Bar	4	3/8" Split Lock Washer	2	3/8"-16 x1.75" Hex Bolt (for mounting of optional lights)
1	Mounting Brace	10	3/8" Flat Washer		
1	License plate bracket	4	3/8" Hex Nut		
2	Round Spacer	2	5/16" USS Flat Washer		
2	M8 40mmx1.25" G 10.9 Bolt	2	5/16" Lock Washer		
2	3/8"-16 x 3/4" Hex Bolt	2	1/4" Flat Washer		
2	3/8"-16 x 1" Hex Bolt	2	1/4" Lag Screw		

Flathead Screwdriver  
 7/16" Wrench or Socket  
 9/16" Wrench or Socket  
 11mm, 12 mm wrench or socket  
 Sharp Cutting Tool

## INSTALLATION INSTRUCTIONS



Remove the splash guard. Identify the two mounting points (indicated by arrows) to install the mounting brace. Remove the OEM plastic spacer - use the round spacer provided in its place.

1



Install the mounting brace, using the (1) round spacer, (1) M8 bolt, (1) 5/16 lock washer, and (1) 5/16 washer, per side. Tighten to 15 lb-ft.

2



Install the license plate mounting bracket, using the supplied 1/4" lag screws and 1/4" washers.

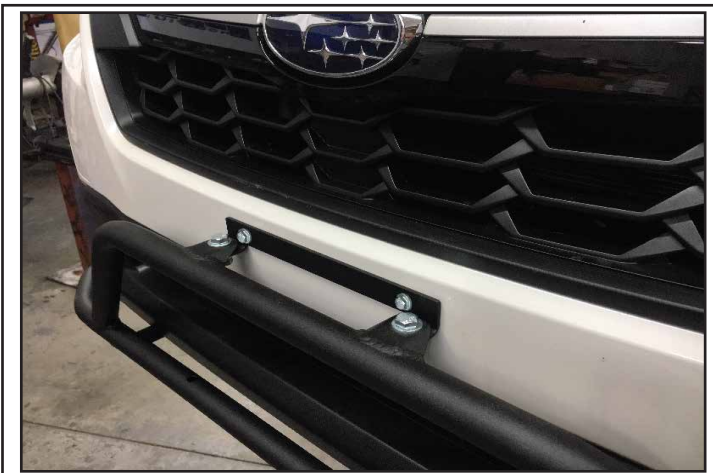
3



Attach the lightbar from the bottom, using (1) 3/8" washer, (1) 3/8" lock washer, and (1) 3/8-16 x3/4" bolt, per side. Keep loose for adjustments.

4

DISCLAIMER FOR RALLY INNOVATIONS PRODUCTS: Buyers assume all risk and liability whatsoever for the installation and the use of Rally Innovations products. Rally Innovations products are sold as decorative accessories and should not be relied upon as protection for the vehicle or occupants in the event of a collision or roll over. Vehicles equipped with a supplemental restraint system (air bag) deployed by impact should not be modified by any aftermarket Light Bar or Skid Guard without first consulting the vehicle manufacturer. Rally Innovations, a subsidiary of Pentech Automotive assumes no liability for injury, loss, incidental or consequential damages in the event of a collision or roll over.



Attach the lightbar from the top using the license plate bracket, with (2) 3/8" washers, (1) 3/8" lock washer, (1) 3/8-16 x1" bolt, and (1) 3/8-16 nut, per side. Keep loose for adjustments.

5



Confirm alignment throughout the lightbar assembly. Tighten 3/8-16 hardware to 30 ft-lb.

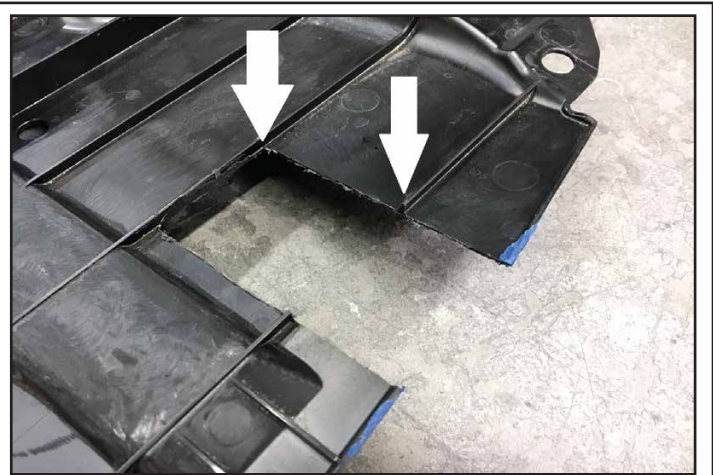
6



**Optional - Trim Splash Guard**

Loosely attach the splash guard. Mark area around the mounting brace to trim for clearance. Mounting brace shown and light bar unmounted for clarity.

7



The trimming area is up to the 2nd plastic rib (as shown above). The approximate area is 4 inches by 2.5 inches, for each side of the splash guard.

8



For each opening, trim 2 notches approximately 3/8 to 1/2 inch wide. This is to clear the edges of the mounting brace. Clean up edges, and reinstall the splash guard. Note: The mounting brace uses 2 points of the splash guard already.

9



Completed assembly.

10