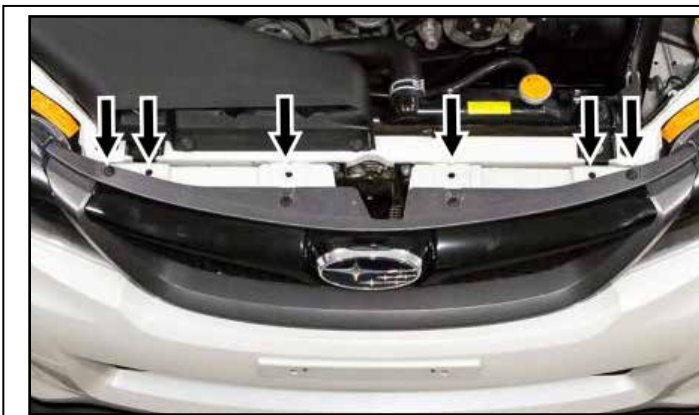


MAKE: SUBARU
 MODEL: 2008-2014 WRX/ STI
 PART: Ultimate Rally Light bar

PACKAGE CONTENTS				TOOLS
QTY		QTY		
1	Ultimate Rally Light Bar	2	3/8" - 16 x 1" Hex Bolt	Ratchet 9/16" Wrench 9/16" Socket 1/2" Socket 12mm Socket Flathead Screwdriver Pliers
1	Lower Mounting Brace	2	3/8" - 16 x 3/4" Hex Bolt	
2	Upper Mounting Brackets	4	3/8" Nut	
1	Skid Guard	10	3/8" Flat Washer	
2	3/8" Bolt Plate	8	3/8" Lock Washer	
2	5/16" - 18 x 1" Hex Bolt	2	5/16" Nut	
2	M8 x25mm long Flanged Bolt	4	5/16" Flat Washer	
2	3/8" - 16 x 2" Hex Bolt	4	5/16" Lock Washer	

INSTALLATION INSTRUCTIONS



Remove bumper and grille clips. Remove splashguard underneath the engine bay.

Note: Removal of entire bumper cover is not required, but may help with ease of installation.

1



Screw Locations

Remove the grille from the bumper cover by removing the screws behind the grille in the areas shown above.

Note: Screw location may vary depending on the year of your vehicle.

2



Remove the factory bolts for the radiator mounting brackets (R+L side) using a 12mm socket.

3



Install the Upper Mounting Bracket, as shown, by carefully pulling the bumper cover away from the car (if you have not removed it) and inserting the bracket behind it. The small bent tab should sit over the radiator mounting bracket, and the forward leg fits in the space of the grille.

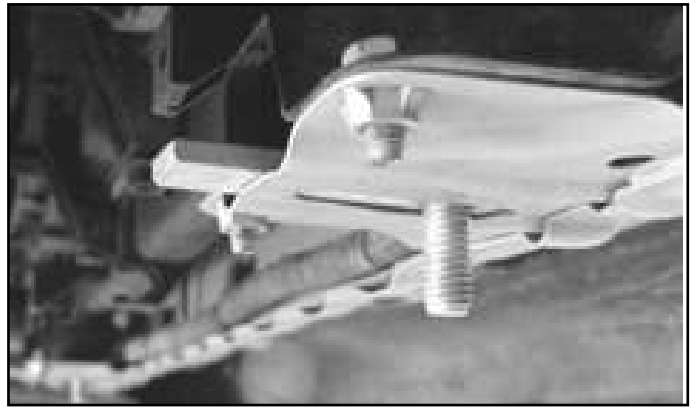
4



Bolt the bent tab of the grille bracket to the radiator mounting bracket using a 12mm socket and (1) M8x25mm Flanged Head Bolt. Repeat on other bracket.

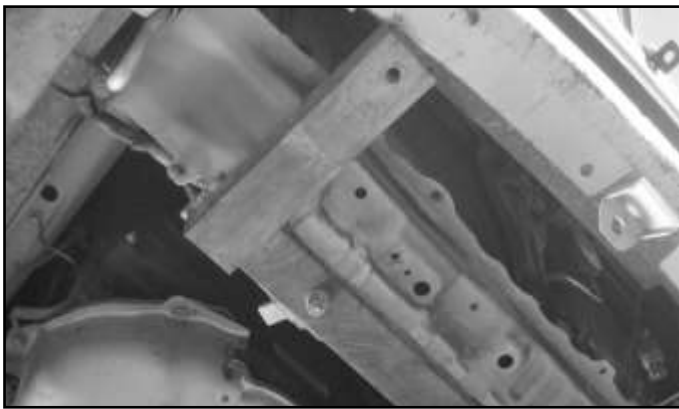
Note: Flanged Head Bolt not shown in above image. Washers not required for Flanged Head Bolt.

5



Beneath the vehicle, locate the two slots on the chassis beneath the radiator on the driver and passenger side and insert (1) 3/8" Bolt Plate into each slot with the threaded shaft facing down.

6



Attach the Lower Mounting Brace to the bolt plates using (1) 3/8" Flat Washer, (1) 3/8" Lock Washer, and (1) 3/8" Hex Nut, per side. Use a 9/16" socket/wrench to fasten hardware.

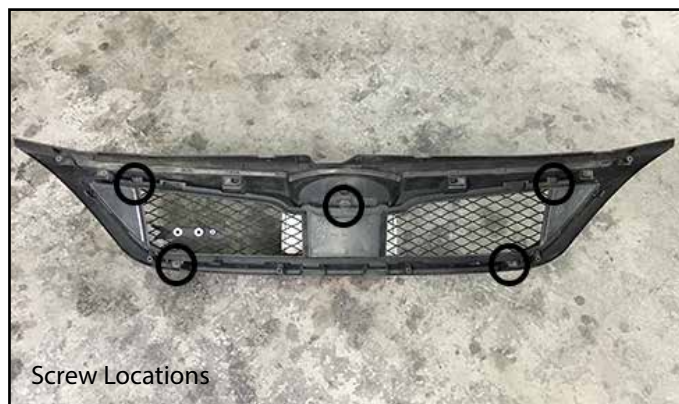
7



Mark cutlines on the grille. Use image above as a guide of what to cut to make space for the bar to slide through the grille for mounting to the Upper Mounting Bracket. Emblem will need to be repositioned.

Note: Another option is to remove the mesh completely from the grille (see image in next step).

8



Screw Locations

To remove the mesh from the grille, remove the screws outlined above. Note: Screw locations may vary depending on the year of your vehicle.

9



The grille consists of three pieces. Top to bottom: Grille frame, mesh retainer, and mesh.

10



If discarding entire mesh piece, reinstall the mesh retainer into the grille frame using the same screws removed in step 9.

11



If retaining the mesh grille, you will need to reposition the "WRX" emblem. Carefully remove emblem lock washers with a small flathead screwdriver and pliers. Reposition emblem to your liking, then reinstall mesh into the grille frame in the reverse order of step 10.

12



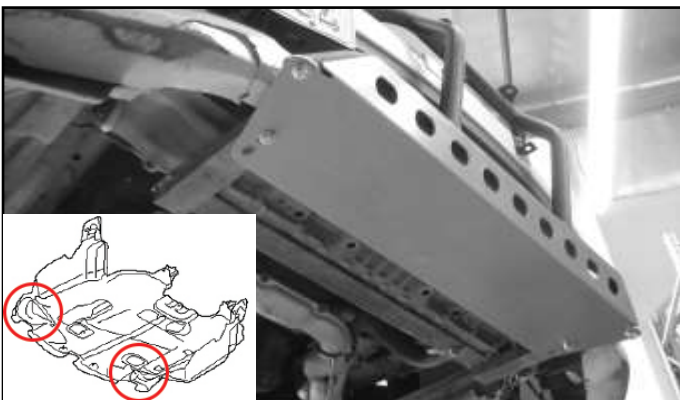
Reinstall bumper cover if removed in step 1. With a 1/2" socket, bolt the upper leg of the grille bracket to the existing hole in the bumper as shown using (1) 5/16"-18 x1" Hex bolt, (2) 5/16" Flat Washers, (1) 5/16" Lock Washer, and (1) 5/16" Hex Nut for each bracket.

13



Attach each side of the light bar to the Upper Mounting Bracket behind the grille with a 9/16" socket using (1) 3/8"-16 x2" Hex Bolt, (2) 3/8" Flat Washer, (1) 3/8" Lock Washer, and (1) 3/8" Hex Nut. Repeat on the other side.

14



Attach Skid Guard to Lower Mounting Brace using (1) 3/8"-16x1" Hex Bolt, (1) 3/8" Lock Washer, and (1) 3/8" Flat Washer, per side. Attach the light bar to the Skid Guard using (1) 3/8"-16 x3/4" Hex Bolt, (1) 3/8" Lock Washer, and (1) 3/8" Flat Washer, per side.

Torque 3/8" hardware to 33 ft-lbs, 5/16" hardware to 19 ft-lbs, M8 to 23 ft-lbs. Trim splashguard in the indicated areas above to clear brace and skid guard, then reinstall.

15



Completed Assembly shown above.

16