

Make: Subaru

Model: 2016-2017 Crosstrek XV

Applications: Light Conversion

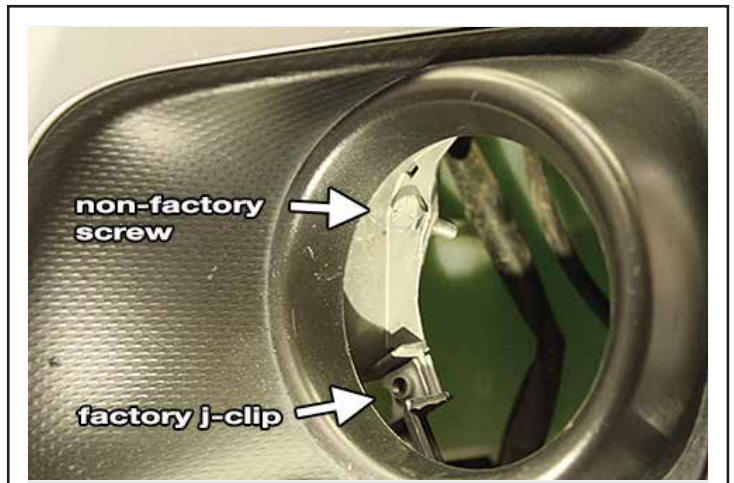
PACKAGE CONTENTS				TOOLS	
QTY		QTY			
2	Light Conversion Bracket	4	1/4"-20 x 3/4" Hex Bolt	Flat Head or Phillips Screwdriver	
1	Wire Harness Adapter Kit (Optional)	8	1/4" SAE Flat Washer	Socket Wrench	
		4	1/4" Lock Washer	7/16 & 10mm Socket or Wrench	
		4	1/4"-20 Hex Nut	Wire Stripper	
				Wire Crimp	

## INSTALLATION INSTRUCTIONS



Remove splash guard underneath foglight on driver and passenger sides to gain access to foglight area. (Save factory hardware and clips for later).

1



Remove the factory foglight and retain factory fasteners for reuse on new light assembly. Repeat on the passenger side. (If factory hardware is not present, use included 1/4" hardware as necessary; our test vehicle still had the factory j-clip but was missing the upper mounting fastener)

2



Attach the new foglight in the Light Conversion Bracket like shown above. Repeat on the passenger side.

3



Attach new foglight assemblies to the bumper like shown above using the included 1/4"-20 hardware (if factory hardware is not available).  
1/4" hardware order: Hex Bolt > Flat Washer > bumper > light bracket > Flat Washer > Lock Washer > Hex Nut.

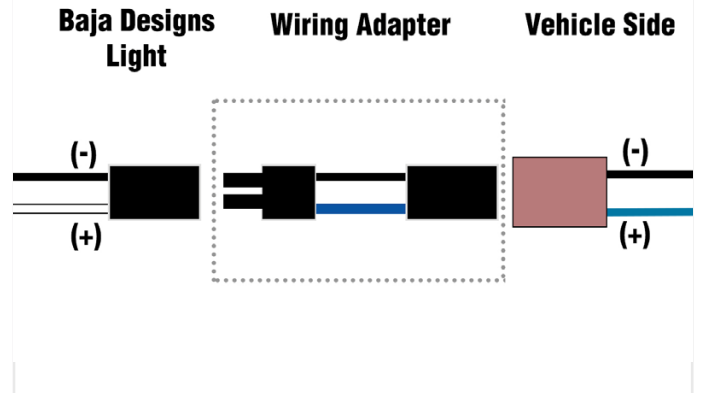
4

DISCLAIMER FOR RALLY INNOVATIONS PRODUCTS: Buyers assume all risk and liability whatsoever for the installation and the use of Rally Innovations products. Rally Innovations products are sold as decorative accessories and should not be relied upon as protection for the vehicle or occupants in the event of a collision or roll over. Vehicles equipped with a supplemental restraint system (air bag) deployed by impact should not be modified by any aftermarket Light Bar or Skid Guard without first consulting the vehicle manufacturer. Rally Innovations, a subsidiary of Pentech Automotive assumes no liability for injury, loss, incidental or consequential damages in the event of a collision or roll over.



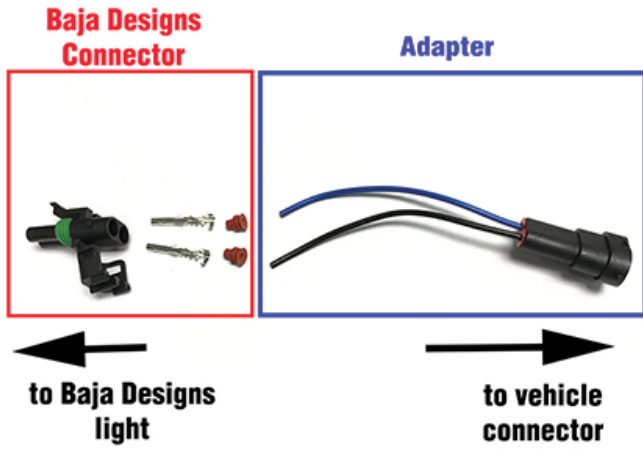
Note: There are two open slots in the bumper that the light bracket mounting tabs (left) slide into. Repeat on the opposite side.

5



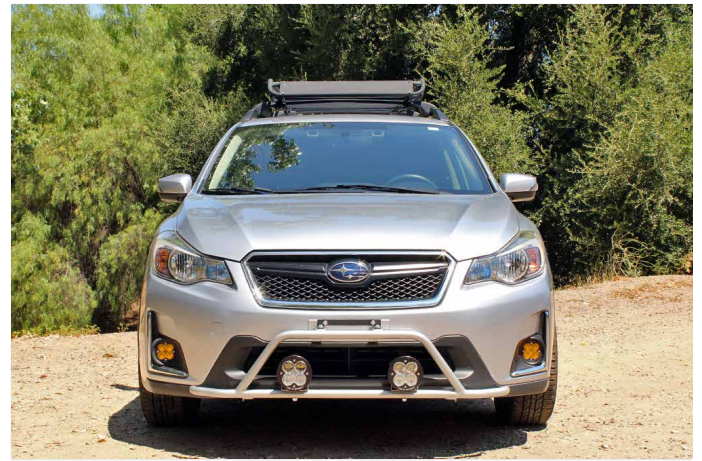
**Installing Pigtail Adapter (Optional):** Note the orientation of the optional pigtail adapter.

6



Assemble the Baja Designs light connector onto the optional pigtail adapter in the order shown above. Remember to note the polarity shown in the previous step before proceeding, you only get one shot installing the connector.

7



Reinstall splash guard, and front bumper cover (if removed) using factory plastic clips.

*Pictured: Completed Assembly.*

8