

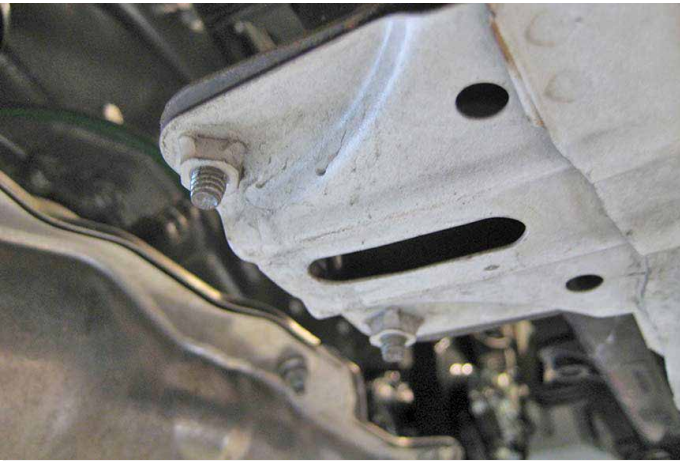
Make: Subaru

Model: 2012-2015 Impreza
2013-2017 Crosstrek XV

Applications: Ultimate Light Bar

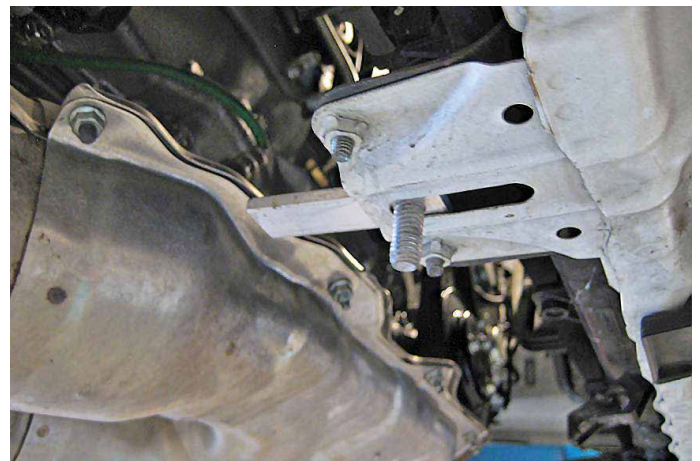
PACKAGE CONTENTS				TOOLS
QTY		QTY		
1	Ultimate Light Bar	2	3/8"-16 x 3/4" Hex Bolt	Flat Head Screwdriver Socket Wrench 1/2", 12mm, 13mm Socket 1/2" Wrench 9/16" Socket 9/16" Wrench
2	Upper Bracket	2	3/8"-16 x 1" Hex Bolt	
1	Lower Brace	2	3/8"-16 x 2" Hex Bolt	
1	Skid Guard	10	3/8" Flat Washer	
2	3/8"-16 Bolt Plate	8	3/8" Lock Washer	
		4	3/8" Nut	
		2	M8x25mm Bolt	

INSTALLATION INSTRUCTIONS



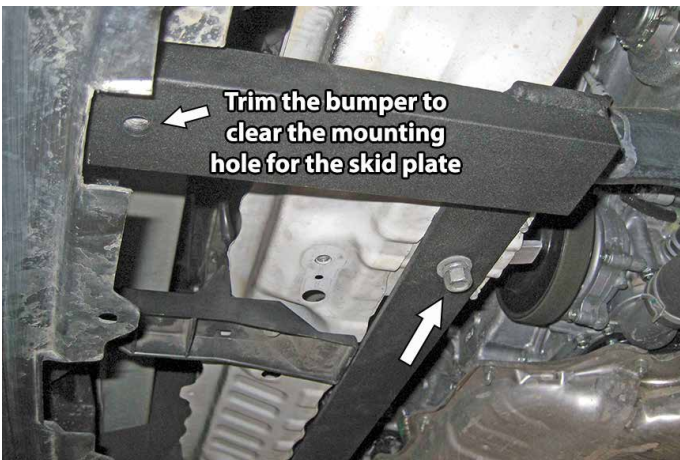
Remove the factory splash guard and locate the slotted holes on the lower radiator support.

1



Insert the supplied bolt plate through the slot so that the threads are facing downward.

2



Install the Lower Brace and pull the brace in the forward position until it stops. Attach a 3/8" flat washer, lock washer, and hex nut to each bolt plate to secure the Lower Brace to the chassis. Trim the edge of the bumper cover as needed to clear the mounting bolt for the skid plate.

3



Remove the airdam bracket located behind the grille. It may be easier to remove by loosening the front bumper cover.

4

DISCLAIMER FOR RALLY INNOVATIONS PRODUCTS: Buyers assume all risk and liability whatsoever for the installation and the use of Rally Innovations products. Rally Innovations products are sold as decorative accessories and should not be relied upon as protection for the vehicle or occupants in the event of a collision or roll over. Vehicles equipped with a supplemental restraint system (air bag) deployed by impact should not be modified by any aftermarket Light Bar or Skid Guard without first consulting the vehicle manufacturer. Rally Innovations, a subsidiary of Pentech Automotive assumes no liability for injury, loss, incidental or consequential damages in the event of a collision or roll over.



Locate the factory M8 bolt attached to the radiator. The location is circled in white.

5



Once removed, attach the Upper Brackets. The bent tab with 2 holes drilled should be facing the center of the vehicle. Attach the bracket with the provided M8 bolt.

6



Cut a section of the Honeycomb so that it would allow the bar to fit inside. The section to cut is the middle of the 3rd Column as circled. (Impreza shown)

7



Cut a section of the Honeycomb so that it would allow the bar to fit inside. The section to cut is the middle of the 3rd Column as circled. (13-15 Crosstrek shown)

8



Cut a section of the Honeycomb so that it would allow the bar to fit inside. The section to cut is the middle of the 5th Column as circled. (16-17 Crosstrek shown)

9



Slide the bar through the grille. Check fitment and make any adjustments to allow the bar to reach the bracket. The Ultimate Light Bar should attach to the lower holes with the 3/8"-18 x2" bolts. Keep the hardware loose until full assembly to allow adjustments.

10

DISCLAIMER FOR RALLY INNOVATIONS PRODUCTS: Buyers assume all risk and liability whatsoever for the installation and the use of Rally Innovations products. Rally Innovations products are sold as decorative accessories and should not be relied upon as protection for the vehicle or occupants in the event of a collision or roll over. Vehicles equipped with a supplemental restraint system (air bag) deployed by impact should not be modified by any aftermarket Light Bar or Skid Guard without first consulting the vehicle manufacturer. Rally Innovations, a subsidiary of Pentech Automotive assumes no liability for injury, loss, incidental or consequential damages in the event of a collision or roll over.



Attach Skid Guard to Ultimate Light Bar using the 3/8"-18 x3/4" bolt, lock washer, and flat washer. Attach the Skid Guard to the Lower Brace using the 3/8"-18 x1" bolt, lock washer, and flat washer. Check fitment, then tighten all

11



The airdam panel may need trimming to fit back in its original location with the new mounting brackets in place. (Crosstrek pictured)

12



The OEM splash guard will need trimming along the dotted black lines on both passenger and driver to clear the mounting brace.

13



Completed assembly shown.

14