

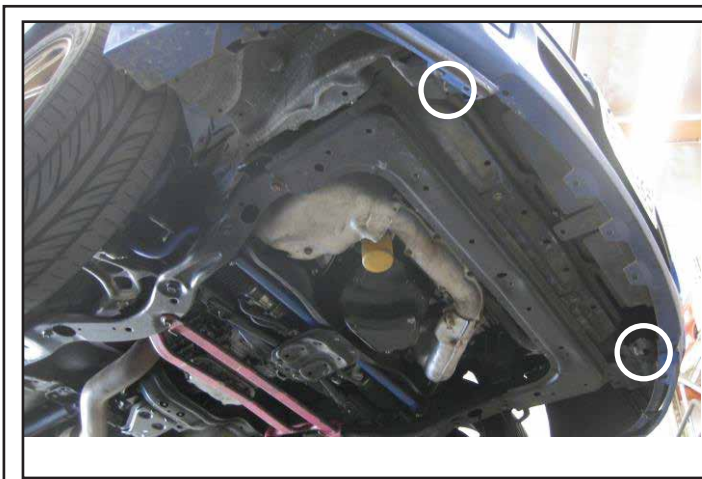
Make: Subaru

Model: 2004-2007 Impreza/WRX/STI

Application: Ultimate Light Bar

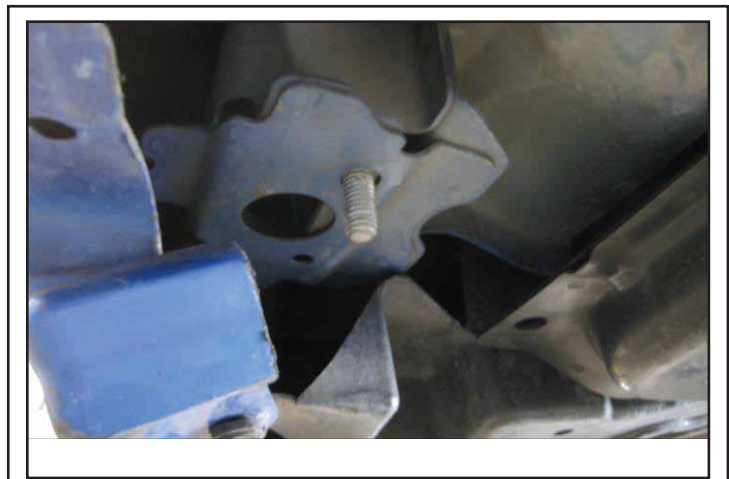
PACKAGE CONTENTS				TOOLS	
QTY		QTY			
1	Ultimate Light Bar	8	3/8" Lock Washer	9/16" Wrench or Socket 1/2" Wrench or Socket 12mm Wrench or Socket	
1	Mounting Brace	4	3/8" - 16 Hex Nut		
2	3/8" - 16 x 1" Hex Bolt	2	M8 Flanged Hex Bolt (2004-2005)		
2	3/8" - 16 x 3/4" Hex Bolt	2	5/16"-18 x 1" Hex Bolt (2006-2007)		
2	3/8" - 16 x 2" Hex Bolt	4	5/16" Flat Washer SAE (2006-2007)		
10	3/8" Flat Washer	2	5/16" Lock Washer (2006-2007)		
2	Bolt Plates	2	5/16"-18 Hex Nut (2006-2007)		

INSTALLATION INSTRUCTIONS



Remove splash guard. Locate holes on lower bumper beam.

1



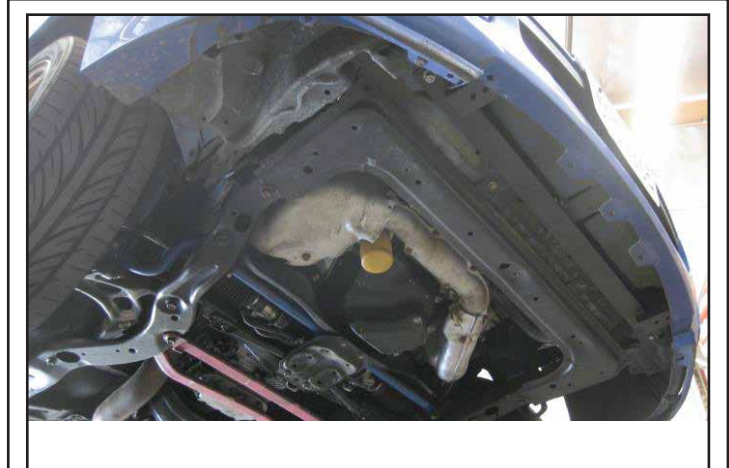
Insert 3/8" Bolt Plates through the large holes in the lower bumper beam such that the threaded stud protrudes through the smaller hole.

2



Attach the brace to the bolt plates using 3/8" Flat Washer, Lock Washer, and Hex Nut.

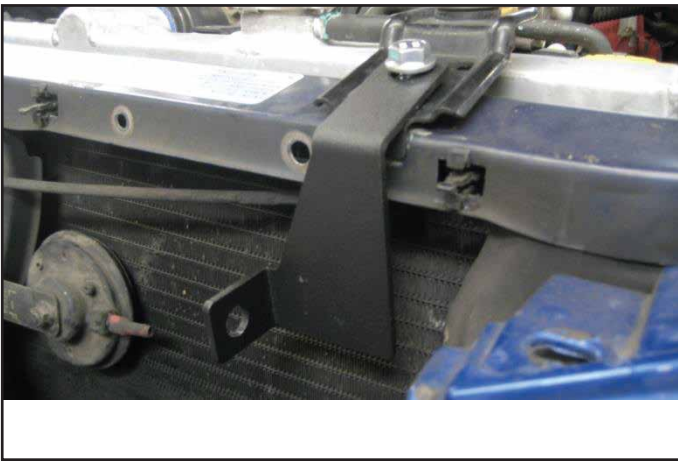
3



Loosely fasten hardware to allow for adjustments.

4

DISCLAIMER FOR RALLY INNOVATIONS PRODUCTS: Buyers assume all risk and liability whatsoever for the installation and the use of Rally Innovations products. Rally Innovations products are sold as decorative accessories and should not be relied upon as protection for the vehicle or occupants in the event of a collision or roll over. Vehicles equipped with a supplemental restraint system (air bag) deployed by impact should not be modified by any aftermarket Light Bar or Skid Guard without first consulting the vehicle manufacturer. Rally Innovations, a subsidiary of Pentech Automotive assumes no liability for injury, loss, incidental or consequential damages in the event of a collision or roll over.



For 04-05: Remove the grill and attach the upper brackets to the upper radiator support with a M8 Flanged Hex Bolt.

5



For 04-05: Make cuts in the grill to allow the bar to pass through and reinstall.
Optional: Leave grill uninstalled.

6



For 06-07: Remove left and right grills. Attach the upper brackets under the sheet metal in front of the upper radiator support.

7



For 06-07: Fasten with 5/16" Hex Bolt, (2) Washers, Lock Washer, and Hex Nut through the bumper cover.

8



For 06-07 grill: Trim the small sections behind the driver-side grill in the areas marked above. Mirror the same cutouts on the passenger side grill. This will allow room for the newly installed upper brackets to fit upon reinstalling

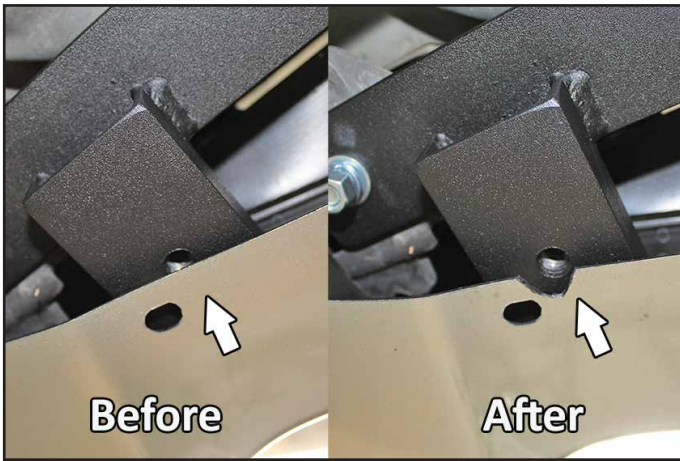
9



For 06-07 grill: Cutout this section of the driver side grill to make room for the tube to pass through. Mirror the same cut on the passenger side grill. **For 04-05 grill:** Temporarily place the grill in its original location and hold the ultimate light bar to it to mark the sections to cut out.

10

DISCLAIMER FOR RALLY INNOVATIONS PRODUCTS: Buyers assume all risk and liability whatsoever for the installation and the use of Rally Innovations products. Rally Innovations products are sold as decorative accessories and should not be relied upon as protection for the vehicle or occupants in the event of a collision or roll over. Vehicles equipped with a supplemental restraint system (air bag) deployed by impact should not be modified by any aftermarket Light Bar or Skid Guard without first consulting the vehicle manufacturer. Rally Innovations, a subsidiary of Pentech Automotive assumes no liability for injury, loss, incidental or consequential damages in the event of a collision or roll over.



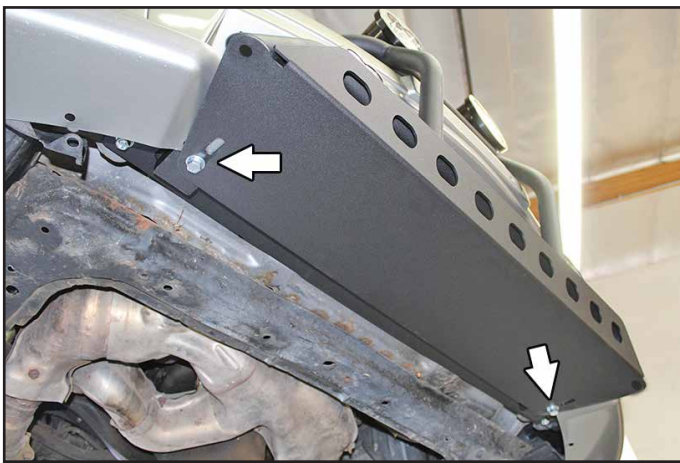
Trimming may be required on the bottom of the bumper to make clearance for the mounting bolt that screws into the lower mounting brace.

11



Slide the grill(s) onto the upper tubes and attach the tubes to the upper mounting brackets using (1) 3/8"-16 x 2" Bolt, (2) 3/8" Washers, (1) 3/8" Lock Washer and (1) 3/8"-16 Hex Nut on each side. Loosely fasten for now.

12



Attach the skid plate to the lower mounting brace using (1) 3/8"-16 x 1" Bolt, (1) 3/8" Lock Washer, and (1) 3/8" Flat Washer on each side. Loosely fasten for now.

13



Attach the skid plate to the bottom of the Ultimate Light Bar using (1) 3/8"-16 x 3/4" Bolt, (1) 3/8" Lock Washer, and (1) 3/8" Flat Washer on each side.

14



Reinstall grill(s) into their original locations.

15



Completed assembly shown.

16

DISCLAIMER FOR RALLY INNOVATIONS PRODUCTS: Buyers assume all risk and liability whatsoever for the installation and the use of Rally Innovations products. Rally Innovations products are sold as decorative accessories and should not be relied upon as protection for the vehicle or occupants in the event of a collision or roll over. Vehicles equipped with a supplemental restraint system (air bag) deployed by impact should not be modified by any aftermarket Light Bar or Skid Guard without first consulting the vehicle manufacturer. Rally Innovations, a subsidiary of Pentech Automotive assumes no liability for injury, loss, incidental or consequential damages in the event of a collision or roll over.