



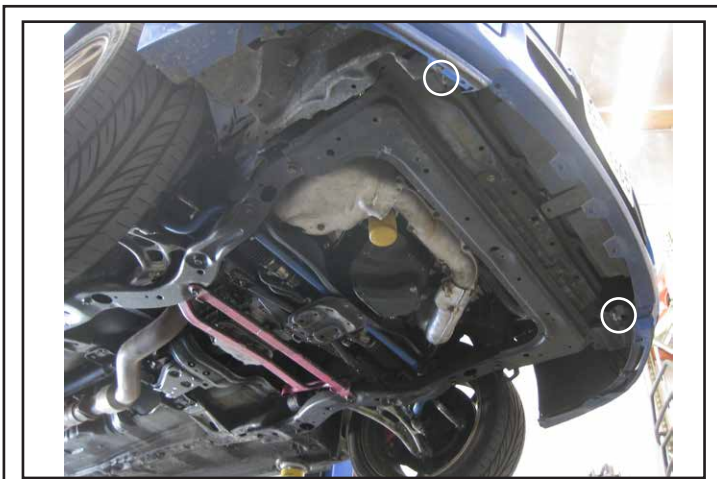
Make: Subaru

Model: 2004-2005 Impreza/WRX/STI

Applications: Skid Guard

PACKAGE CONTENTS				TOOLS
QTY		QTY		
1	Rally Skid Guard	6	3/8" SAE Washer	Ratchet 9/16" Wrench/Socket 1/2" Wrench/Socket
1	Mounting Brace	8	3/8" Lock Washer	
2	3/8" Bolt Plate	2	5/16"-18 x 1" Hex Bolt	
2	3/8"-16 x 1" Hex Bolt	2	5/16" Lock Washer	
4	3/8"-16 x .75" Hex bolt	2	L-Brackets	
4	3/8"-16 Hex Nut			

INSTALLATION INSTRUCTIONS



Remove factory splash guard. Locate holes on lower bumper beam.

1



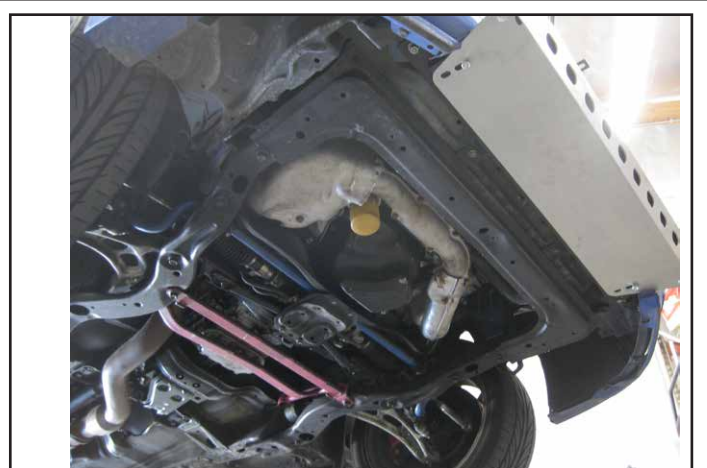
Locate the two holes in the lower bumper beam and insert (1) 3/8" Bolt Plate through each hole.

2



Attach the mounting brace to the lower bumper beam with (2) 3/8" Washers, (2) 3/8" Lock Washers, and (2) 3/8" Hex Nuts.

3



Attach Skid Guard to brace using (2) 3/8"-1" Hex Bolts, (2) 3/8" Lock Washers, and (2) 3/8" SAE Washers.

4

DISCLAIMER FOR RALLY INNOVATIONS PRODUCTS: Buyers assume all risk and liability whatsoever for the installation and the use of Rally Innovations products. Rally Innovations products are sold as decorative accessories and should not be relied upon as protection for the vehicle or occupants in the event of a collision or roll over. Vehicles equipped with a supplemental restraint system (air bag) deployed by impact should not be modified by any aftermarket Light Bar or Skid Guard without first consulting the vehicle manufacturer. Rally Innovations, a subsidiary of Pentech Automotive assumes no liability for injury, loss, incidental or consequential damages in the event of a collision or roll over.



Assemble (2) L-Brackets with (1) 3/8"-.75" Hex Bolt, (1) 3/8" Lock Washer, and (1) 3/8" Hex Nut through the hole on each bracket.

5



Attach L-Brackets to Skid Guard tube with (1) 5/16" Hex Bolt, (1) 5/16" Lock Washer, and (1) 5/16" Flat Washer through the slot of each bracket.

6



Tighten all hardware.
Optional: Reattach factory splash guard.

7