



MAKE: Subaru
 MODEL: 2010-2014 Legacy
 PART: Rally Light Bar

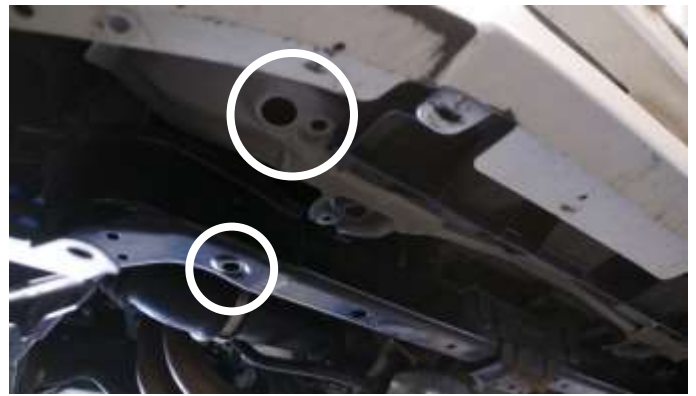
PACKAGE CONTENTS				TOOLS
QTY		QTY		
1	Rally Light Bar	6	3/8 Lock Nut	Ratchet 7/16" Socket Ratchet Extension Screw Driver Set 9/16" Socket 9/16" Wrench
2	Lower Bracket	6	3/8 Nut	
1	License Plate Bracket	2	5/16 Bolt Plate	
2	3/8"-18 x 1" Hex Bolt	2	5/16 Flat Washer	
2	3/8"-18 x 1 1/2" Hex Bolt	2	5/16 Lock Nut	
2	3/8"-18 x 3" Hex Bolt	2	5/16 Nut	
12	3/8 Flat Washer	2	3/8 Nylon Spacer	

INSTALLATION INSTRUCTIONS



After securely lifting the vehicle, remove the factory center splash guard.

1



Locate the two mounting locations for each lower bracket. The location is at the lower radiator support and front sub-frame.

2



Feed the 5/16" bolt plate (aluminum side) into the larger opening on the lower radiator support. The threaded bolt should stick out of the hole that the arrow is pointing to.

3



Attach the bracket to the lower radiator support.
Note: Insert the ratchet extension into the through hole, then attach the 7/16" Socket.
Loosely assemble for adjustments.

4



Attach the lower bracket to the lower sub-frame using (1) 3/8"-18 x 3" hex bolt & (1) nut on each side. The threaded portion should point upward.

5



Attach the upper bracket using the stock license plate screws. **Do NOT overtighten** as it may strip the plastic threads.

6



Attach the upper portion of the light bar using the supplied 3/8" nylon spacer, (1)3/8"-18 x 1 1/2" hex bolt, (2) 3/8 flat washer, 3/8 lock nut, and 3/8 nut on each side. **Keep loose for adjustments.**

7



Attach the lower portion of the light bar using the supplied 3/8"-18 x 1" hex bolt, (2) flat washer, (1) lock washer, and 3/8 nut on each side. Verify light bar fitment, then tighten all hardware.

8