




Make: Subaru

Model: 2010-2014 Outback

Application: Rally Light Bar


PACKAGE CONTENTS				TOOLS
QTY		QTY		
1	Rally Light Bar	4	3/8" Lock Washer	Flathead Screwdriver 9/16" Socket/Wrench 1/2" Socket/Wrench Sharp Cutting Tool
2	Lower Bracket	4 (2)	5/16" - 18 x 1" Hex Bolt	
2	Upper Bracket	0 (2)	5/16" - 18 x 1.5" Hex Bolt	
2	3/8" Bolt Plate	4	5/16" - 18 Hex Nut	
2	3/8" - 16 x 2.5" Hex Bolt	6	5/16" Flat Washer	
4	3/8" - 16 Hex Nut	4	5/16" Lock Washer	
6	3/8" Flat Washer	0 (2)	3/4" Nylon Spacer	

## INSTALLATION INSTRUCTIONS




Remove the plastic splash guard.  
Insert (2) 3/8" Bolt Plates into the holes shown above.

1



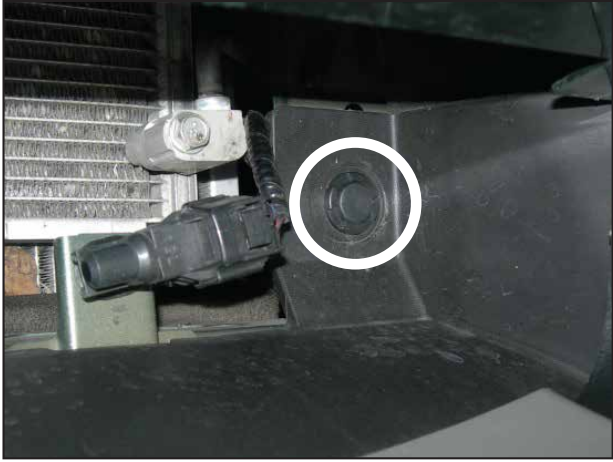
Attach (2) Lower Brackets to the Bolt Plates. Fasten with (1) 3/8" Flat Washer, Lock Washer, and Hex Nut per side.

2



Attach the Bar to the Lower Brackets using (1) 3/8" x 2.5" Hex Bolt, (2) Flat Washers, (1) Lock Washer, and (1) Hex Nut per side.

3



Remove the (2) plastic clips shown located inside the lower air dam.

4

DISCLAIMER FOR RALLY INNOVATIONS PRODUCTS: Buyers assume all risk and liability whatsoever for the installation and the use of Rally Innovations products. Rally Innovations products are sold as decorative accessories and should not be relied upon as protection for the vehicle or occupants in the event of a collision or roll over. Vehicles equipped with a supplemental restraint system (air bag) deployed by impact should not be modified by any aftermarket Light Bar or Skid Guard without first consulting the vehicle manufacturer. Rally Innovations, a subsidiary of Pentech Automotive assumes no liability for injury, loss, incidental or consequential damages in the event of a collision or roll over.



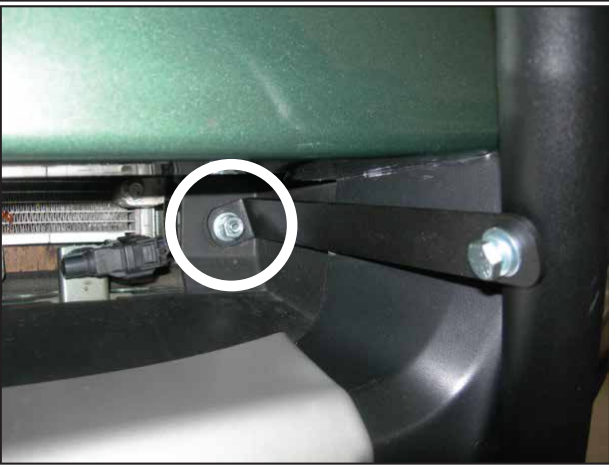
Insert (1) 5/16" x 1" Hex Bolt and Flat Washer into the holes shown.

5



Fasten the (2) Upper Brackets to the bar with (1) 5/16" x 1" Hex Bolt, Lock Washer, and Flat Washer each. Fasten the rear bolt with (1) Flat Washer, Lock Washer, and Hex Nut.

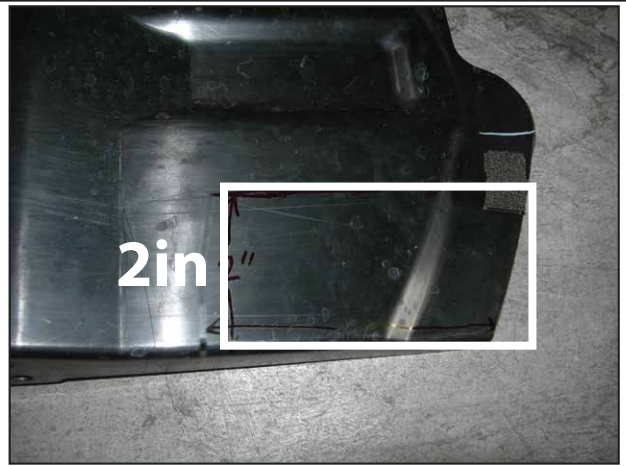
6



**For 2013-14 Outback:**

Use 5/16" x 1.5" Hex Bolt and insert 3/4" Spacer in front of the hole shown.

7



Trim the splash guard as shown to clear the bar and re-attach.

8