



Qty.	Parts Contents	Tools	Items
1	Light Bar		 <p style="text-align: center;"><i>Hardware</i></p>  <p style="text-align: center;"><i>97-02 Subaru Forester (SF) Bracket Kit</i></p>
2	Mounting Bracket (L/R)	9/16 Socket	
2	"L" Bracket	9/16 Wrench	
2	3/8-16 x 1.00 Hex Bolt	11mm Socket	
12	3/8 Flat Washer	Ratchet	
6	3/8 Lock Washer		
6	3/8-16 Nut		
4	3/8-16 x 2.00 Hex Bolt		
2	5/16 USS Flat Washer		
2	1/4 Lag Screw		

Installation Instructions

- Carefully read and understand entire instructions before the attempt of installation. Check all contents to Parts Contents list. Inspect for any damages or missing contents. Be sure that proper tools are used. Keep in mind that during installation, nothing should be forced. If using a hydraulic jack to raise the vehicle, be sure that vehicle is supported properly with jack stands.
- Lower splash guard to access factory tow hook plate. Remove tow hook plate and install mounting bracket re-using factory bolts as shown in Figure 1. Install Mounting Brackets. Note orientation as shown in Figure 2. Torque to 50 ft lbs. Repeat for other side.
- Attach "L" brackets using (1) 1/4 x 1.00" lag screw, (1) 5/16 USS washer as shown in Figure 3. Be sure that slot side of the "L" bracket is on top and horizontal. Tighten into position but do not over torque. Repeat for other side.
- Attach Rally Light Bar to "L" brackets using (1) 3/8-16x1 hex bolt, (2) 3/8 flat washer & (1) 3/8 lock washer and (1) 3/8 -16 nut as shown in Figure 4. Repeat for other side. Assemble loosely.
- Attach Rally Light Bar to lower mounting brackets using (1) 3/8-16x2 hex bolt, (2) 3/8 flat washer & (1) 3/8 lock washer and (1) 3/8 -16 nut as shown in Figure 5. Repeat for other side. Assemble loosely. Once in desired position, tighten and torque 3/8" hardware to 32 ft lbs in steps shown in Figure 4 & Figure 5.

**DRIVER SIDE SHOWN*



Figure 1



Figure 2



Figure 3



Figure 4

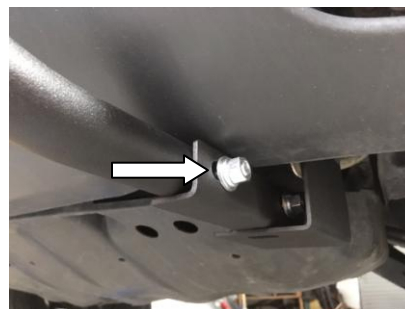


Figure 5



Figure 6