




Make: Ford

Model: 2015+ Mustang
GT Performance Pack (GTPP) and
Non-GT Performance Pack

Application: 3-Piece Aluminum Front Splitter


PACKAGE CONTENTS				TOOLS	
QTY		QTY			
1	Front Splitter - Center Piece	2	1/4" - 20 Hex Nut	7mm Socket/Wrench 6mm Socket/Wrench 1/2" Socket/Wrench 3/16" Hex Key 5/16" Drill Bit	
2	Front Splitter - Side Piece	2	1/4" Lock Washer		
4	#8 x 2" Screw (Non GTPP Version)	8	1/4" Flat Washer USS		
(6)*	#8 x 1.5" Screw (GTPP Version)*				
6	#8 Flat Washer				
2	1/4" - 20 x 1" Buttonhead Screw				

INSTALLATION INSTRUCTIONS



(GTPP) Remove the (5) indicated screws.

1A




(Non-GTPP) Remove the indicated screws from the factory splitter. Loosely attach center piece with (4) #8 x 2" Screws and Flat Washers.

1B



(GTPP) Attach the Center Piece with (1) Factory Screw [as indicated by large arrow], and (4) #8 x 1.5" Screws, (4) #8 Flat Washers, and (4) 1/4" Flat Washers [as shown by 4 smaller arrows]

2A



(Non-GTPP) Remove the indicated screws (3 long arrows) from the factory splitter. Loosely attach side pieces with factory screws. Note: Short arrow (left most arrow) will be used to drill

2B

DISCLAIMER FOR RALLY INNOVATIONS PRODUCTS: Buyers assume all risk and liability whatsoever for the installation and the use of Rally Innovations products. Rally Innovations products are sold as decorative accessories and should not be relied upon as protection for the vehicle or occupants in the event of a collision or roll over. Vehicles equipped with a supplemental restraint system (air bag) deployed by impact should not be modified by any aftermarket Light Bar or Skid Guard without first consulting the vehicle manufacturer. Rally Innovations, a subsidiary of Pentech Automotive assumes no liability for injury, loss, incidental or consequential damages in the event of a collision or roll over.



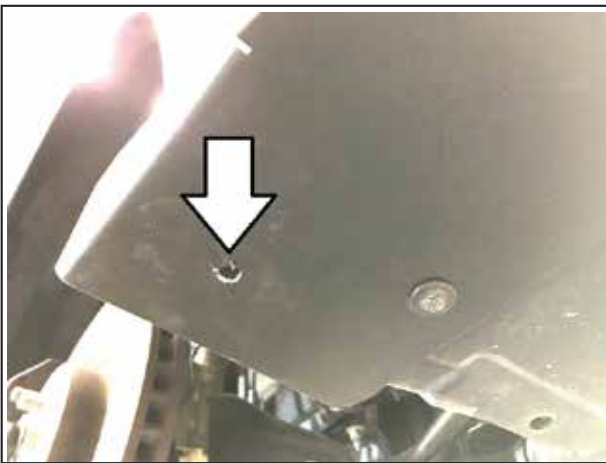
(GTPP) Attach Side Piece with (2) Factory Screws, and (1) #8 x 1.5" Screw, (1) #8 Washer, and (1) 1/4" Washer on each side.

3A



(Non-GTPP) Check that the center piece rests on top of the side pieces. Adjust fitment and tighten all hardware.

3B



(GTPP) Drill the indicated hole through the bumper with a 5/16" Drill Bit, per side.

4A



(Non-GTPP) Drill the indicated hole through the bumper with a 5/16" Drill Bit, per side.

4B



(GTPP and Non-GTPP) Remove the indicated fenderliner clips and pry the liner away to access the inside of the bumper cover.

5



(GTPP and Non-GTPP) Fasten with (1) 5/16" Buttonhead Screw, (1) Flat Washer, (1) Lock Washer, and (1) Hex Nut per side. Reattach the fender liner.

6