

Make: Ford

Model: 2016-2020 Shelby GT350

Application: 3-PC Front Splitter

PACKAGE CONTENTS				TOOLS	
QTY		QTY		Flathead Screwdriver	
1	Center Splitter	4	5/16" Hex Nut	Panel Removal Tool	
2	Side Splitter	6	1/4" Rivnut (and 1 x rivnut tool kit)	13/32" Drill Bit, 5/16" Drill Bit	
2	Bind Post Screws	4	1/4-20 x1.25" Buttonhead Bolt	5/32" Hex Key, 3/16" Hex Key	
4	5/16-18 x1" Buttonhead Bolt	4	Angle Washers	9/16", 1/2" Wrench	
4	5/16" SAE Flat Washer	4	3/8" Spacers	7/16" Socket & Wrench	
4	5/16" Split Lock Washer			7mm Socket	
				Torx Driver Set	
				Loctite (Blue)	

INSTALLATION INSTRUCTIONS

Remove the torx screws located underneath the front bumper, affixing the splash guard to the car. This step aids in gaining access behind the cover to fasten the mounting hardware in later steps.

1

Locate the drill templates in the hardware kit and arrange them on a table in an orientation mimicking the surface of the splash guard.

2

Start on one side, carefully placing the templates aligning the holes with the factory rivets/holes on the splash guard. Note: The empty holes will be where you will mark to drill holes later on.

3

Once you have all the templates on the splash guard, find the (2) side splitters and loosely reinstall them on the car with the factory 7mm head screws removed in step 1.

4

DISCLAIMER FOR RALLY INNOVATIONS PRODUCTS: Buyers assume all risk and liability whatsoever for the installation and the use of Rally Innovations products. Rally Innovations products are sold as decorative accessories and should not be relied upon as protection for the vehicle or occupants in the event of a collision or roll over. Vehicles equipped with a supplemental restraint system (air bag) deployed by impact should not be modified by any aftermarket Light Bar or Skid Guard without first consulting the vehicle manufacturer. Rally Innovations, a subsidiary of Pentech Automotive assumes no liability for injury, loss, incidental or consequential damages in the event of a collision or roll over.



With the help of a friend, hold up the splitters against the splash guard and position them to where you find it looks ideal. Use the templates as a guide to locate your drill holes. Note: It is ok if where you desire to drill the holes are a little off from where the templates holes are.

5



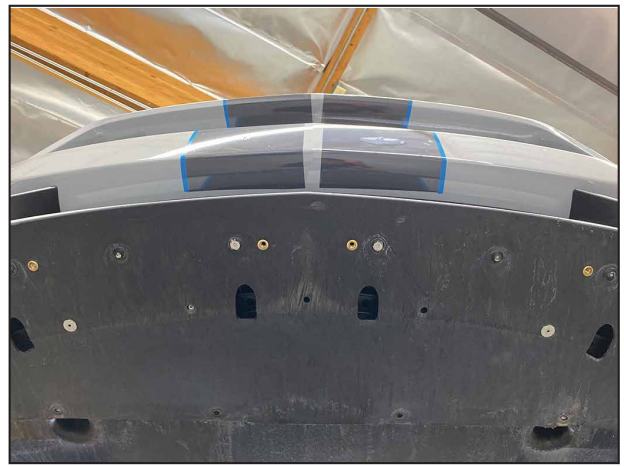
Remove the Center Splitter and set aside. With the Side Splitter still attached to the vehicle, carefully swing it out of the way to begin drilling the newly marked holes. Use a 5/16" drill bit to drill out the (2) new holes on the splash guard.

6



Attach the side splitter with a 5/16-18x1" Buttonhead Bolt, 5/16" SAE Flat Washer, Split Lock Washer, and Hex Nut in each hole. Repeat on the opposite side splitter. Keep the bolts loose for now.

7



Drill the Center Splitter holes using the 13/32" drill bit. Install the Rivnuts in the newly drilled holes using the method shown in the following steps.

8



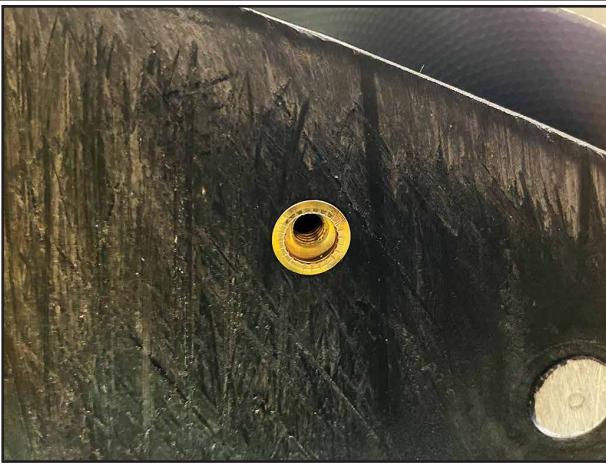
Place a rivnut in each hole with the flange oriented at the bottom.

9



Rivnut Installation: Take your Rivnut Tool Kit and thread it onto the Rivnut like shown. Use a 9/16" Wrench to hold the collar and 7/16" Socket Wrench to tighten down the Rivnut. Be careful not to overtighten. This step requires some patience to install properly.

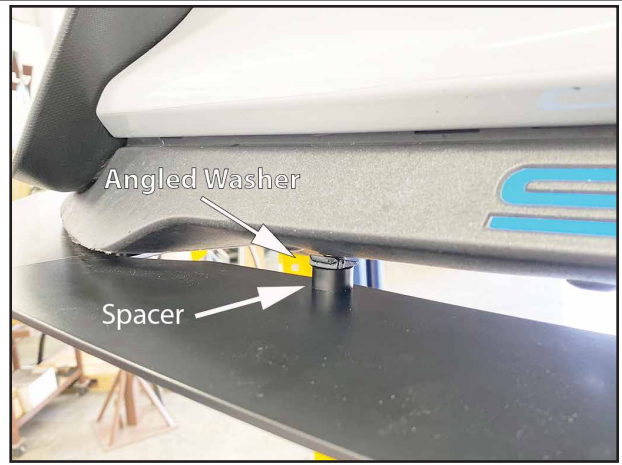
10



Your (4) rivnuts should look like shown once installed properly.

Note: Extra rivnuts are included in case of a mistake during installation. Take care to install the rivnuts properly.

11



Next, attach the Center Splitter to the splash guard using the included 1/4-20 x 1.25" Buttonhead Bolts. Place (1) Angled Washer and (1) 3/8" Spacer in between the splitter and the splash guard for each mounting hole. Keep hardware loose until you fasten the Bind Post Screws in Step 14.

12



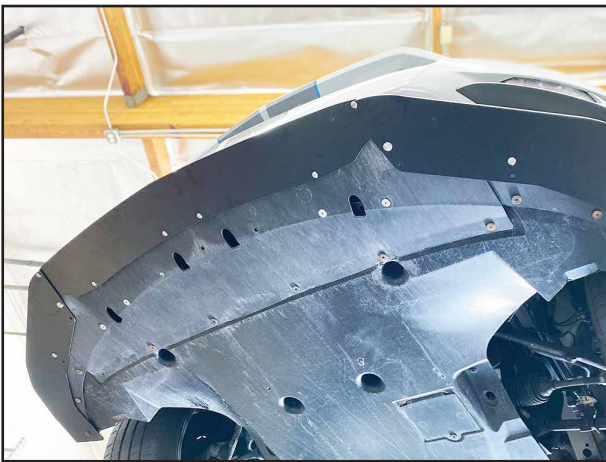
The orientation of the hardware should be as follows: Buttonhead Bolt > Splitter > Spacer > Angled Washer > Rivnut.

13



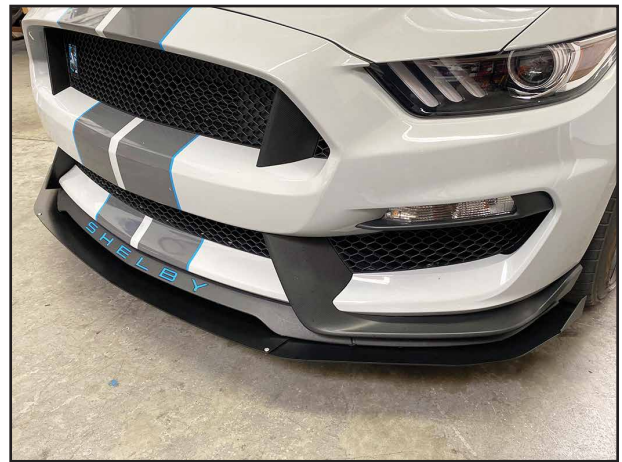
Next, attach the center splitter to the side splitters with the included (2) Bind Post Screws. Apply Loctite to the threads on the 1/4-20 Buttonhead bolts securing the Center Splitter. Tip: Do them one at a time to prevent assembly from coming completely apart.

14



Once everything is attached, tighten down all hardware and reinstall the factory torx screws removed in step 1. Also, remove and reinstall the bind post screws applying loctite to the threads.

15



Completed Assembly.

16