

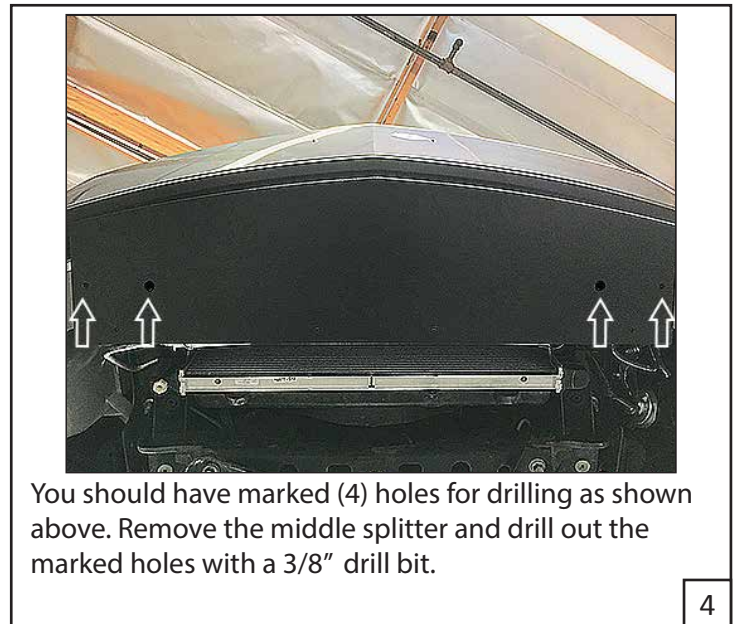
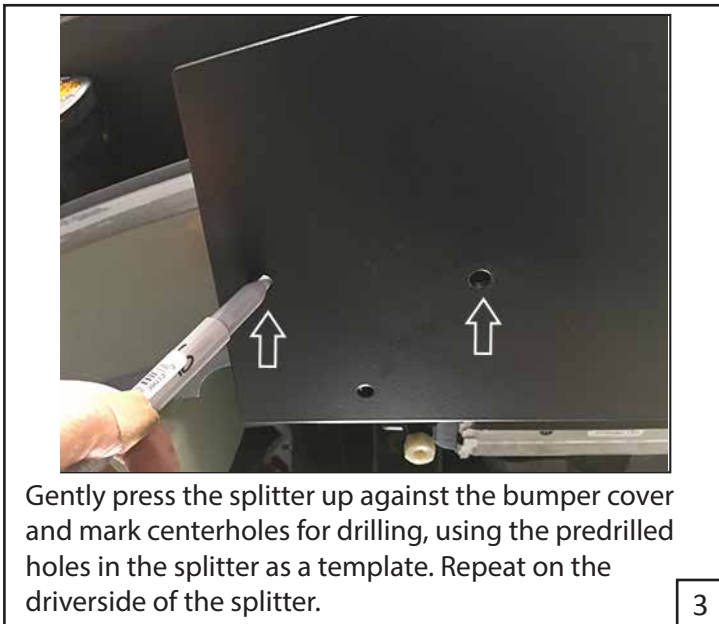
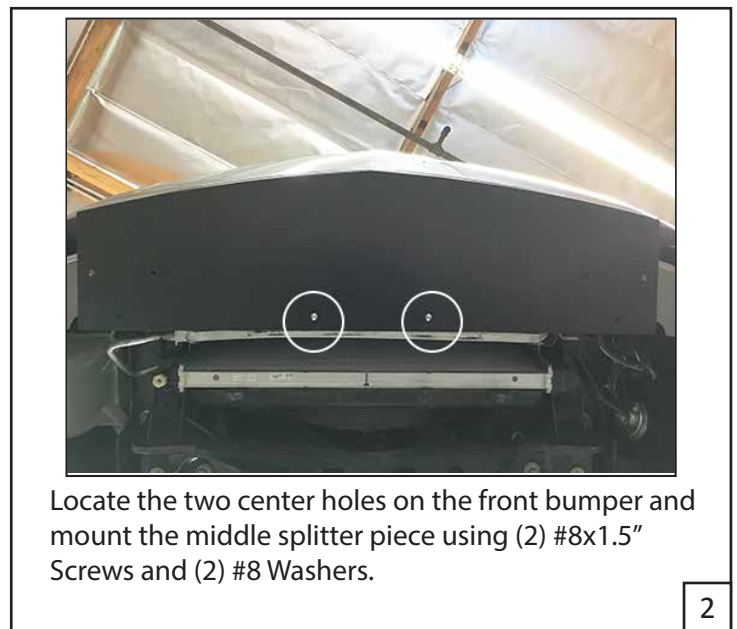
Make: Ford

Model: 2010-2012 Mustang GT

Application: 3-Piece Aluminum Front Splitter

PACKAGE CONTENTS				TOOLS	
QTY		QTY			
1	Front Splitter - Center Piece	8	5/16" Flat Washer	7MM SOCKET/WRENCH	
2	Front Splitter - Side Piece	8	5/16"-18 Hex Nut	1/4" SOCKET/WRENCH	
4	#8 x 1.5" Screw			POWER DRILL	
4	#8 Flat Washer			1/8" DRILL BIT (PILOT HOLE)	
8	5/16"-18 x 1.00" Buttonhead Bolt			3/8" DRILL BIT	
8	5/16" Lock Washer			MARKER	
				3/16" ALLEN WRENCH/SOCKET	
				1/2" SOCKET/WRENCH	

INSTALLATION INSTRUCTIONS



DISCLAIMER FOR RALLY INNOVATIONS PRODUCTS: Buyers assume all risk and liability whatsoever for the installation and the use of Rally Innovations products. Rally Innovations products are sold as decorative accessories and should not be relied upon as protection for the vehicle or occupants in the event of a collision or roll over. Vehicles equipped with a supplemental restraint system (air bag) deployed by impact should not be modified by any aftermarket Light Bar or Skid Guard without first consulting the vehicle manufacturer. Rally Innovations, a subsidiary of Pentech Automotive assumes no liability for injury, loss, incidental or consequential damages in the event of a collision or roll over.



Reattach middle splitter with (2) 5/16" x1.00" Button-head bolts, (2) 5/16" Washers, (2) 5/16" Lock Washers, and (2) 5/16"-18 Hex Nuts in the circled holes shown above. Do not tighten all the way yet.

5



Hold up one of the side splitters to the bumper and align the fin to seat flush with the arc of the wheel well as shown above.

6



Once the fin is aligned, align the mounting holes (shown above) with the middle splitter.

7



Attach side splitter with (1) 5/16"-18 x1.00" Buttonhead bolt, (1) 5/16" Washer, (1) 5/16" Lock Washer and (1) 5/16"-18 Hex Nut in the hole shown above.

8



Ensure the fin is still aligned (as shown in step 6) and mark the centerholes for drilling as shown above. Drill out the marked holes with a 3/8" drill bit.

9



Attach the splitter using (2) 5/16"-18 Buttonhead Bolts, (2) 5/16" Washers, (2) 5/16" Lock Washers, and (2) 5/16"-18 Hex Nuts. Repeat steps 6-10 on the other side.

10



Install (4) #8x1.5" Screws and (4) #8 Washers on the middle splitter.
Tighten all hardware.

11



Completed assembly shown above.

12