

Make: Ford

Model: 2017-2019 Fusion Sport

Application: 3-PC Front Splitter

PACKAGE CONTENTS				TOOLS
QTY		QTY		1/2", 7/16" Socket/Wrench 3/16" Hex Key 5/32" Hex Key 7mm Socket 1/4" Drill Bit 5/16" Drill Bit Step-drill Bit
1	Front Splitter - Center Piece	2	1/4"-20 x3/4" Socket Buttonhead	
2	Front Splitter - Side Piece	4	1/4" SAE Flat Washer	
4	5/16"-18 x 1" Socket Buttonhead	2	1/4"-20 Hex Nut	
4	5/16" Flat Washer			
4	5/16" Split Lock Washer			
4	5/16"-18 Nut			

INSTALLATION INSTRUCTIONS

Locate the mounting holes in the front bumper (circled above). Remove the screws from them.

1

Reuse factory hardware for each mounting hole for the center splitter. Tighten hardware, but keep the two outside screws (circled above) loose until the end of installation.

2

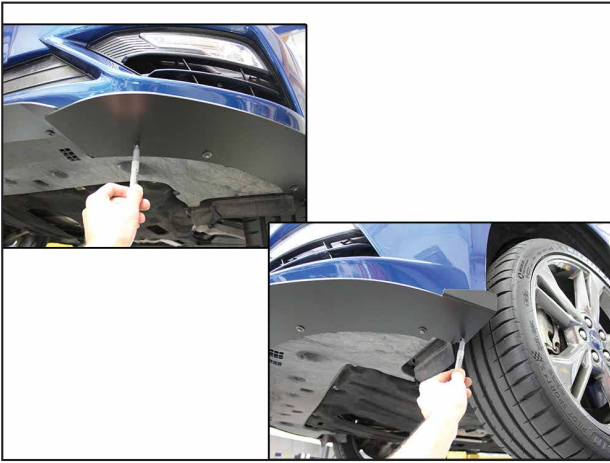
Attach the front splitter-side pieces, first, using the factory screws in the factory holes. Loosely fasten screws for now.

3

Line up the side pieces with the center section before marking the holes to drill in the next step.

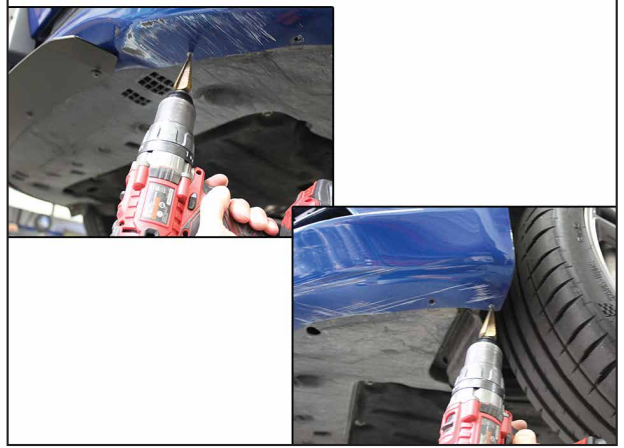
4

DISCLAIMER FOR RALLY INNOVATIONS PRODUCTS: Buyers assume all risk and liability whatsoever for the installation and the use of Rally Innovations products. Rally Innovations products are sold as decorative accessories and should not be relied upon as protection for the vehicle or occupants in the event of a collision or roll over. Vehicles equipped with a supplemental restraint system (air bag) deployed by impact should not be modified by any aftermarket Light Bar or Skid Guard without first consulting the vehicle manufacturer. Rally Innovations, a subsidiary of Pentech Automotive assumes no liability for injury, loss, incidental or consequential damages in the event of a collision or roll over.



Once you have the side splitter positioned where you want it, mark the remaining holes for drilling.

5



Drill holes out using a step drill bit to 5/16 inch.

6



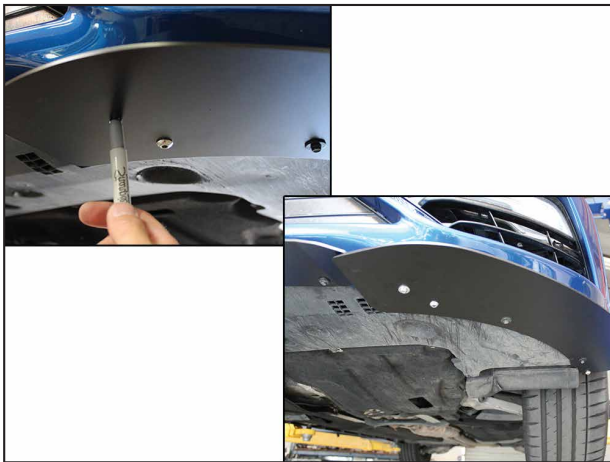
Follow through with a normal 5/16inch drill bit and make sure to drill through the splash guard located above the bumper.

7



Install 5/16" hardware in the order as follows: Buttonhead bolt, Flat Washer, Split Lock Washer, Hex Nut. Loosely tighten for now.

8



Mark the final hole (near the center section) for drilling and drill out using a 1/4 inch drill bit. Repeat on the opposite side splitter piece. Insert 1/4" hardware into each hole in the order as follows: Buttonhead Bolt, Flat Washer, Flat Washer, Hex Nut.

9



Tighten all loose hardware and review the installation.

Completed Assembly.

10