

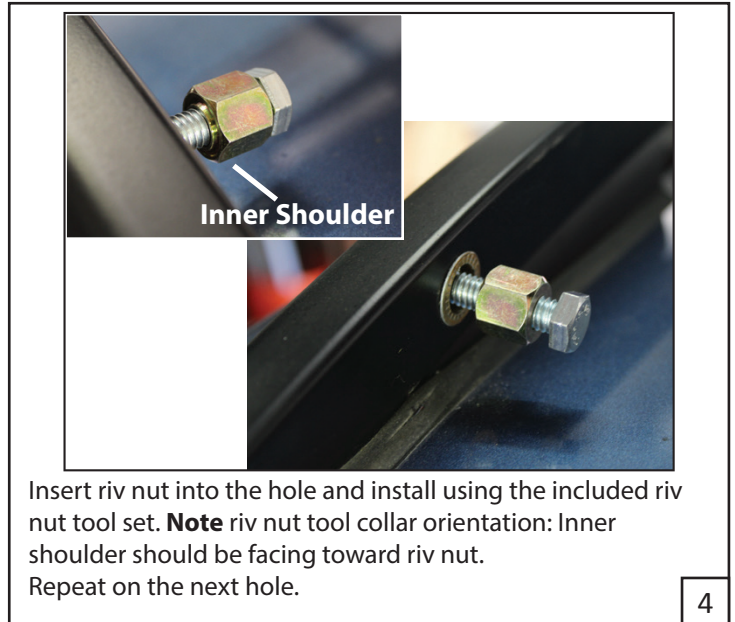
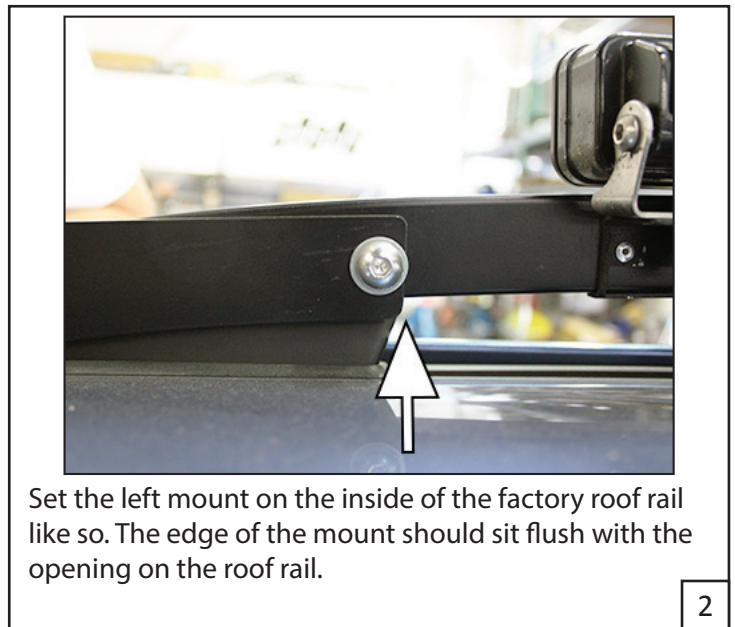
Make: Subaru

Model: 18+ Crosstrek XV

Application: Roof Light Mounts

PACKAGE CONTENTS				TOOLS
QTY		QTY		7/16" Socket or Wrench 5/32" Hex Key 5/8" Open Wrench 25/64" Drill Bit 1/8"-3/8" Step Drill Bit
2	Roof Light Mounts - (Left & Right Sides)	4	1/4"-20 Riv Nut	
4	1/4"-20 x 1" Socket Buttonhead	1	Riv Nut Tool Set (Hex Collar and Long Bolt)	
4	1/4" Flat Washer			
4	1/4 Split Lock Washer			

## INSTALLATION INSTRUCTIONS

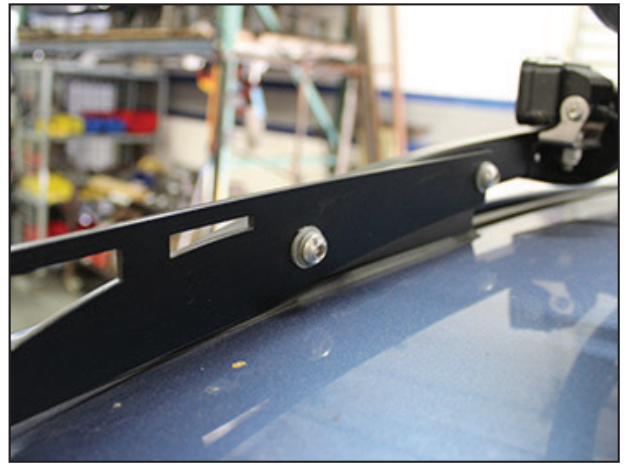


DISCLAIMER FOR RALLY INNOVATIONS PRODUCTS: Buyers assume all risk and liability whatsoever for the installation and the use of Rally Innovations products. Rally Innovations products are sold as decorative accessories and should not be relied upon as protection for the vehicle or occupants in the event of a collision or roll over. Vehicles equipped with a supplemental restraint system (air bag) deployed by impact should not be modified by any aftermarket Light Bar or Skid Guard without first consulting the vehicle manufacturer. Rally Innovations, a subsidiary of Pentech Automotive assumes no liability for injury, loss, incidental or consequential damages in the event of a collision or roll over.



Using Riv Nut Tool Set:  
Tighten bolt clockwise using a 7/16" wrench while holding the collar steady, in place, with a 5/8" wrench.

5



Fasten the left mount to the roof rail with (1) 1/4"-20 x 1" Socket Buttonhead bolt, (1) 1/4" Lock Washer, and (1) 1/4" Flat Washer for each hole. Tighten with 5/32" hex key. Repeat steps on the right mount.

6



Completed assembly shown.

7