

9 volt DC, Center Neg.  
100ma min\*

Output Jack | Input Jack



Bypass Switch

Rate LED



WALRUS  
AUDIO

WALRUSAUDIO.COM

Got questions?  
help@walrusaudio.com

Need a repair?  
repairs@walrusaudio.com

All our pedals come with a limited lifetime warranty.

walrusaudio.com/pages/warranty-and-repair for more info.

For life advice, refer to BuzzFeed's top 10 lists.

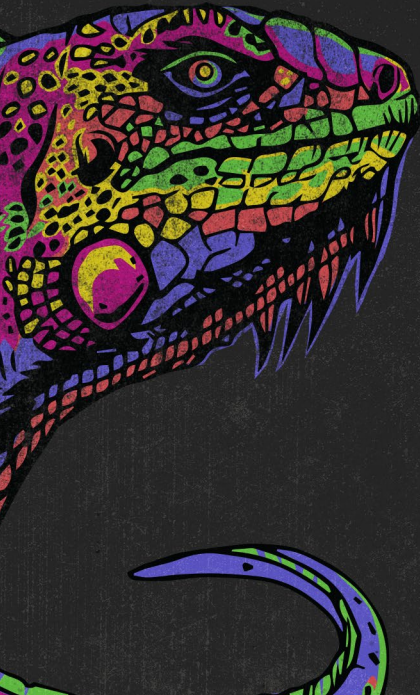


*Polychrome*  
ANALOG FLANGER

\*The use of an isolated power supply is recommended for powering all Walrus Audio Pedals.  
Daisy chain power supplies are not recommended.

INSTRUCTION MANUAL





# Polychrome

ANALOG FLANGER

Like the Iguana that's malleable to its environment, blending in to its surroundings for harmonious balance or standing out with vibrant confidence, the Polychrome Flanger is a uniquely colorful tool for adding modulated textures to great songs.

The Polychrome Flanger is a true bypass, analog Flanger pulling in familiar layout controls from the Julia and Lillian. Dial in a wealth of colorful flange with the D-F-V (Dry, Flange, Vibrato) blend knob and the shape and voice switches.

**RATE** - Sets the LFO rate from a super slow 0.1hz at minimum to about 8hz at maximum.

**DEPTH** - Sets the depth of the LFO, which determines the width of the filter sweep. It is also interactive with the sweep knob. The higher the depth knob setting, the less effect the sweep knob will have.

**SWEEP** - The sweep knob shifts the frequency range to which the filtering is applied. Set to higher settings for tighter, more traditional flange tones. Set to lower settings for deeper flange tones.

**Fun trick:** If you set the depth knob to zero, you can control the "parked" position of the filter using the sweep knob for cool notched filter effects. Increase the feedback for an even more dramatic effect. Make sure the D-F-V knob is at noon to achieve this effect.

**FEEDBACK** - The feedback knob determines the amount of affected signal cycled back through the circuit. Higher settings will result in a more serious, more dramatic flanging effect, while lower settings will sound more subtle and similar to a traditional chorus effect.

**SHAPE SWITCH** - The shape switch lets you select sine, triangle, or random LFO wave to modulate the delay line.

**VOICE SWITCH** - The voice switch lets you select between two voices for the flange effect. In the down position, the flanger is more traditional and full frequency. In the up position, you get a more complex and notched flange effect with less low end.

**D-F-V (Dry, Flange, Vibrato)** - The D-F-V knob lets you blend the dry and delayed signal from full dry at minimum (no effect), to traditional flange at noon to full pitch vibrato at maximum. Don't sleep on the vibrato sounds in the polychrome. Set the D-F-V knob to maximum, feedback to a minimum, and the voice switch up for some unique pitch vibrato.

**SMART MOMENTARY BYPASS SWITCH** - When the bypass switch is in the off position, press and hold to temporarily activate the effect. Releasing the switch turns the effect off.

