



WIGO USER MANUAL

INSTALLATION

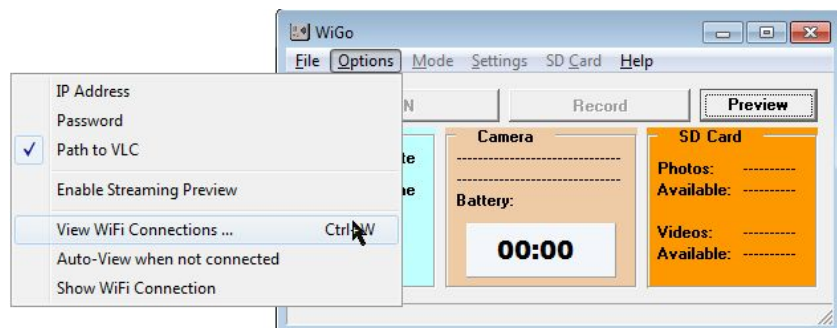
Before you begin to use WiGo, it will be necessary to do the following:

- [Download](#) and install the latest version of WiGo.
- HERO2: [Update the firmware](#) in your Camera to version 198 or later.
- HERO3: [Update the firmware](#) in your camera to the latest version.
- If you have trouble installing the new firmware, [there are solutions here](#).
- Once you have the Wifi BacPac working with the latest firmware, use CineForm Studio to set the SSID (Wifi access name) and password for the BacPac.
- HERO2: Press the Wi-Fi BacPac button to go to the WiFi menu. Select **PHONE & TABLET**. This allows your computer to connect to the BacPac's Wi-Fi network.
- HERO3: Navigate the camera menu to turn on the WiFi and set it to **GoPro App**.
- Use the Wifi settings on your computer to connect to the camera. Note that if WiFi is your internet access, you will not have access to the internet while connected to the camera.
- If you wish to view the streaming preview from the camera, you will need the latest [VLC Media Player from VideoLAN](#).

CONFIGURING WIGO

Menu Overview

First, use the **Options Menu** to set the IP address and password WiGo will use to communicate with the camera. The default IP address is **10.5.5.9**. It is



possible to change the camera IP address using a custom firmware update. The password is the same password you set with CineForm or embedded in the firmware update installation files downloaded from GoPro.

In the Options Menu, set the **Path to VLC**. This is the location of the vlc.exe program or other streaming media viewer on your computer. It is usually in **C:\Program Files (x86)\VideoLAN\VLC**.

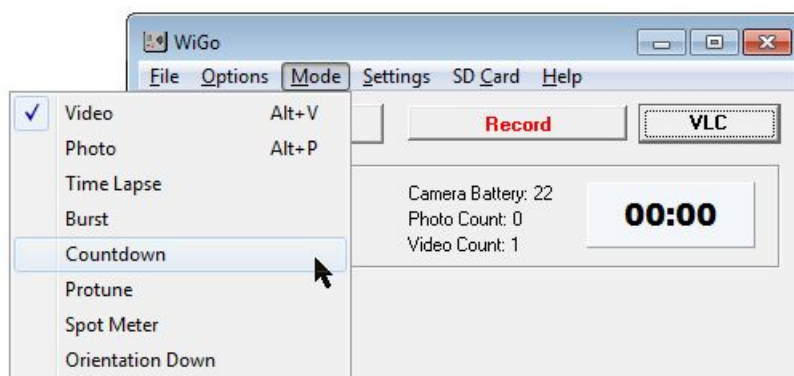
Enable Streaming Preview enables the streaming of a low resolution video image that can be used to frame the view. The preview is available in all modes when enabled. In video mode, the preview is always available when recording. The **VLC** button will be enabled when the preview is available to view in the VLC window. Some users have found it necessary to restart their computer after installing or updating VLC to get streaming to work.

VLC is a very powerful program. Once you are streaming video to VLC, the stream can be shared on your local network to other devices, or embedded in a web page for public or private viewing.

View WiFi Connections shows the Windows network connection dialog so you can switch from your internet hotspot to your camera. Ctrl-W is a quick shortcut for bringing up the dialog when you want to switch back and forth.

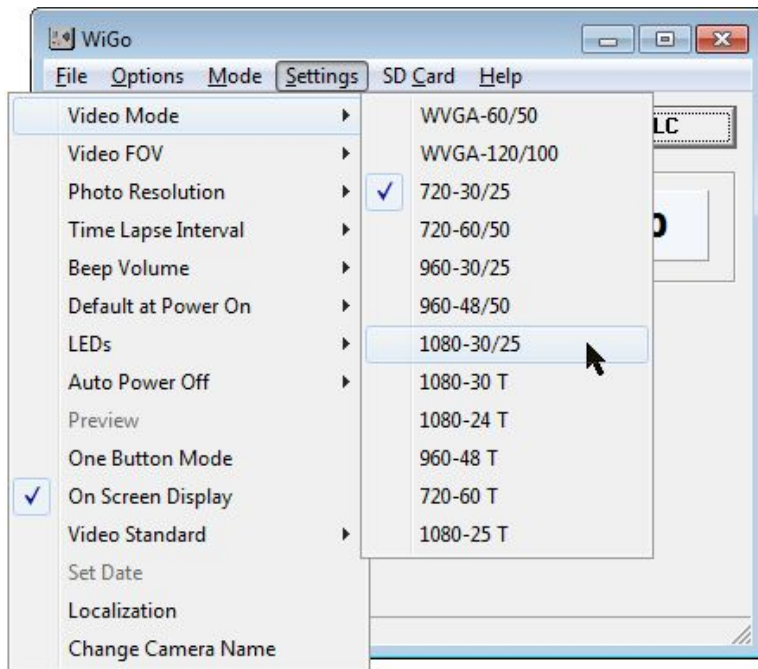
Auto-View when not connected. When WiGo is not connected to a camera, Auto-View will show the Windows network connection dialog. If you do not have VAN.dll installed, this option will not work. Make sure it is unchecked.

Show WiFi Connection. The current WiFi connection will be shown at the top of the WiGo app along with the signal strength. This option only works with Windows 7 and 8. Some users have reported a problem with this option causing a window which is supposed to be invisible to appear on their screen. If this happens, uncheck this option to disable it.



The **Mode Menu** is used to set the mode the camera will

record in when you press the record button.

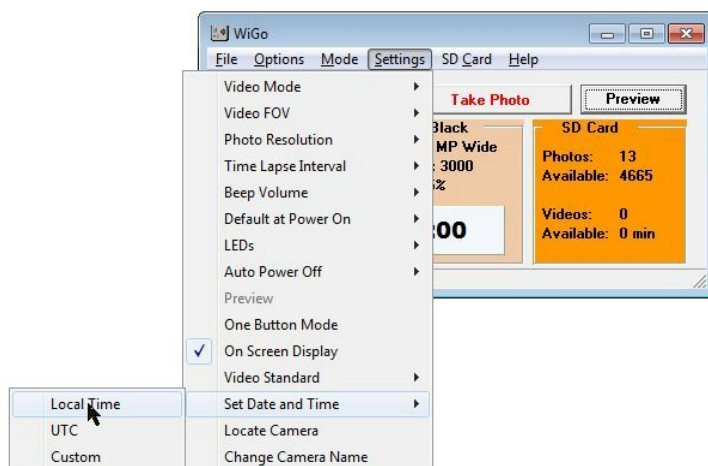


The **Settings Menu** is used to set various settings on the camera. Some settings are "read only" and have to be set on the camera. They are included in the menu for your convenience. Most of the common settings are available.

Remember that there is a communications delay after changing a setting. The command will be sent to the camera. After the setting has changed, the camera will verify the new settings, then the menu

will refresh and the check mark will appear in the correct place. *Be patient* and wait a moment for this to happen.

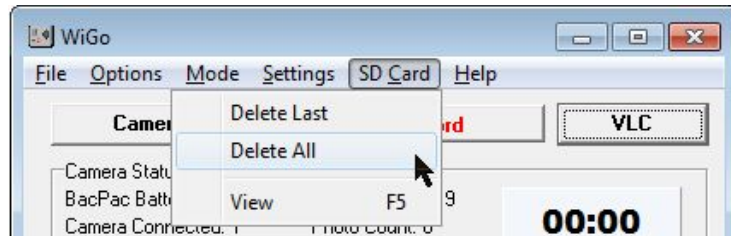
Note: one way to "crash" the HERO3 is to send commands (or even push the buttons) on the camera before it is ready. If your HERO3 freezes, just pull the battery and put it back in.



The **Set Date and Time** function will fill in the current local time from your PC. You can edit the date if you want to use a different time zone. It doesn't matter what characters are used as dividers as long as the digits stay in the same place. Good examples today are: `12 10 26 22 23 00` which is the same as `12/10/26 22:23:00` or `12.10.26`

22:23:00. All are in the form YY.MM.DD HH:MM:ss.

The **SD Card Menu** gives you access to the files on the card in the camera. **Delete Last** and **Delete All** are the same commands available on the camera menu for deleting the last photo or video, or cleaning off the entire SD card.



View available also by pressing **F5** will open your web browser to the camera server page. From that page you can view or download any image or video file from the camera. Note that the WiFi connection is much slower than taking the SD card out and reading it directly. But sometimes, it is convenient to view images in full resolution without moving the camera.

The HERO3 Black camera does not mount the SD card for remote viewing. It is possible to view the SD card by starting the camera with a special script on the SD card. See Super One Button Mode Scripts for more information.



When your computer is connected to a camera or WiFi hotspot, the title bar of the WiGo window will display the SSID of the host you are connected to and the signal strength of the connection. This is very convenient if you have more than one camera or use your WiFi for your internet connection as well as to control the camera. WiGo Pro automates wireless connections, allowing control of

multiple cameras and automatic reconnection to the internet for photo uploads to an FTP site.

The command buttons should be self-explanatory. Hover the cursor over the command buttons for a hint explanation of each button. The power button shows as **On** when the camera is off and **Off** when the camera is on. If no camera is connected, it is disabled.

The shutter button shows **Take Photo** when the camera is in photo mode, or **Record** when the camera is in video mode. While recording video, the shutter button shows **Stop**. Modes can be switched with the hotkeys: Alt-V (video) and Alt-P (photo).

The video stream from the camera is available with preview mode or when recording video by pressing the **Preview** button.

The left panel shows the camera date and time setting. The difference between local time and camera time is shown below the time. The camera time can be set quickly using the **Settings** menu.

The center panel shows the current photo or video setting. The settings can be changed using the camera menu or the Settings menu on WiGo. Note that not all video and photo settings are available on all cameras.

When shooting video, the elapsed time of the currently recording is displayed on the screen in a large easy to read font.

The right panel shows the state of the SD card. The number of photos taken and the available space is shown, based on the current photo resolution setting. Similarly, the number of video recordings and the number of minutes available on the SD card are shown based on the video settings.