

*****PLEASE READ THIS ENTIRE PAGE BEFORE PROCEEDING*****

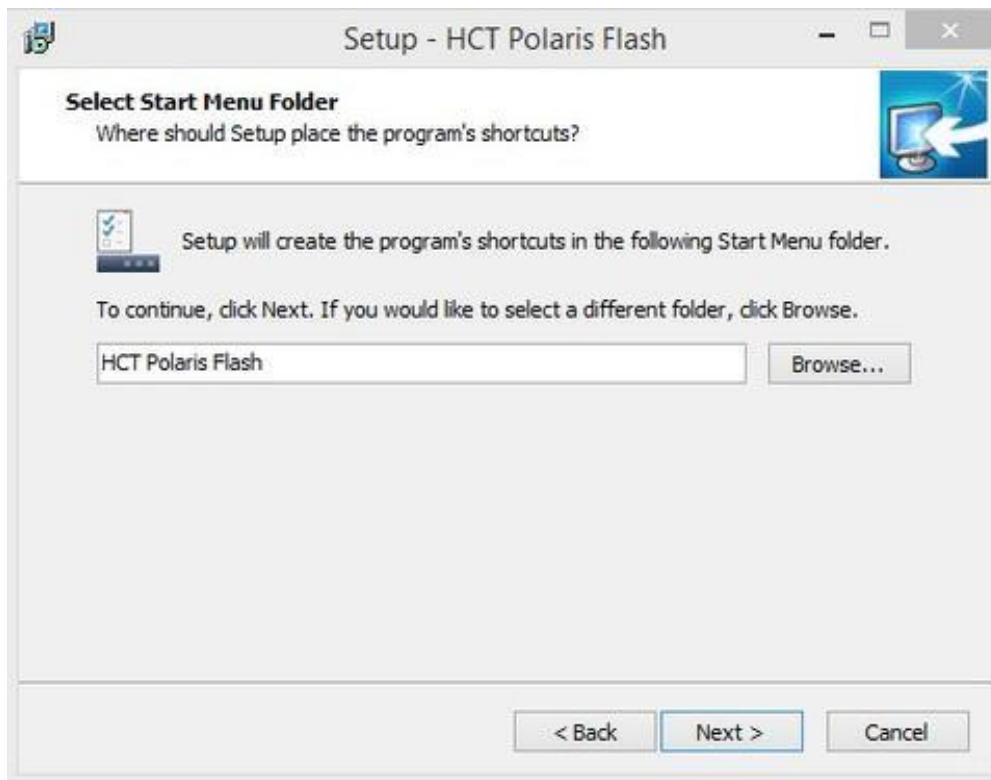
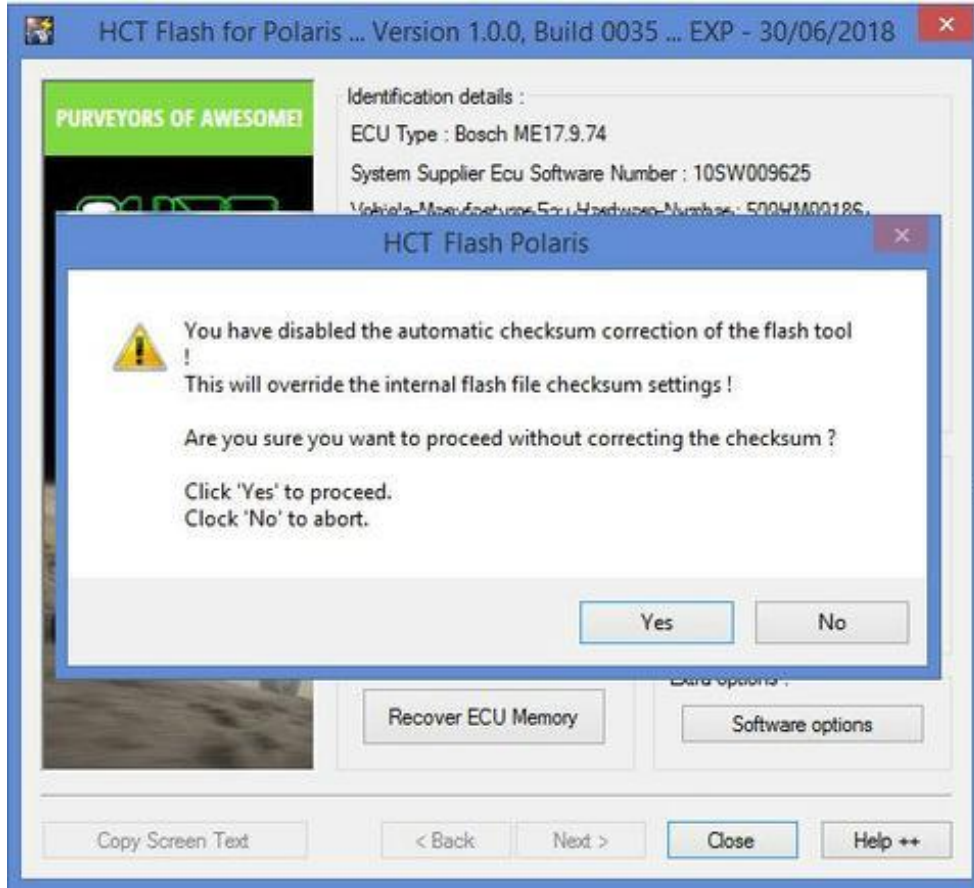
Instructions for flashing your Polaris or Can-Am ECU

Required to flash:

- Flash Cable – This is the 16 pin OBDII connector. It uses a mini USB to standard USB cable that plugs into your computer.
- Can-Am or Polaris Adapter Cable.
- Flash Client – The software application that allows you to ID and write via your diagnostic port. This program is installed like any program on your computer as a .exe file. The software is available on the download links below.
- Computer – You need to have a computer to install the flash client and connect the USB cable to. This can be any PC or Tablet running Windows. Android, IOS, MAC, and Windows XP is not supported.
- If you have a issue with the driver, you can download the driver separately [here](#).
- You will need to send us a screenshot, cell phone picture, etc of the Step below showing your software number and VIN so we can send you back the file. Please email sales@hardcore-tuning.com
- Internet connection is NOT required. If you need support we may need to do a screenshare with you. We recommend www.ultraviewer.net.
- Software Download
 - [Can-Am Installation](#)
 - [Polaris Installation](#)

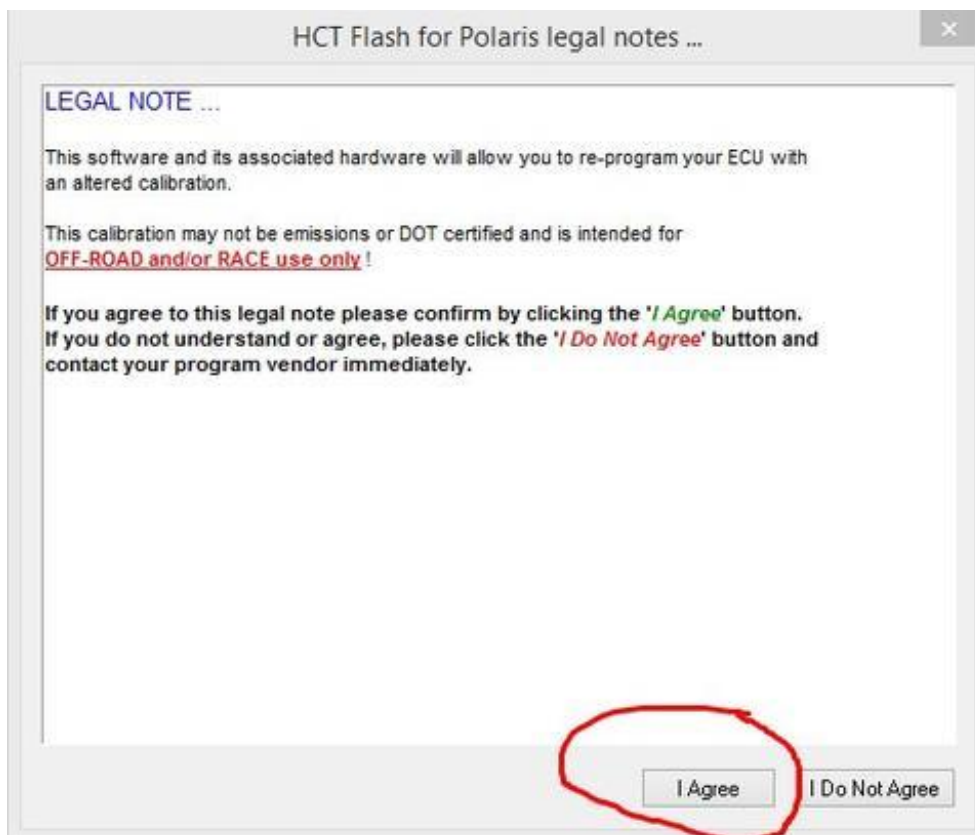
Downloading and Installing the application. Make sure when it asks you if you want to install the drivers you select Yes.

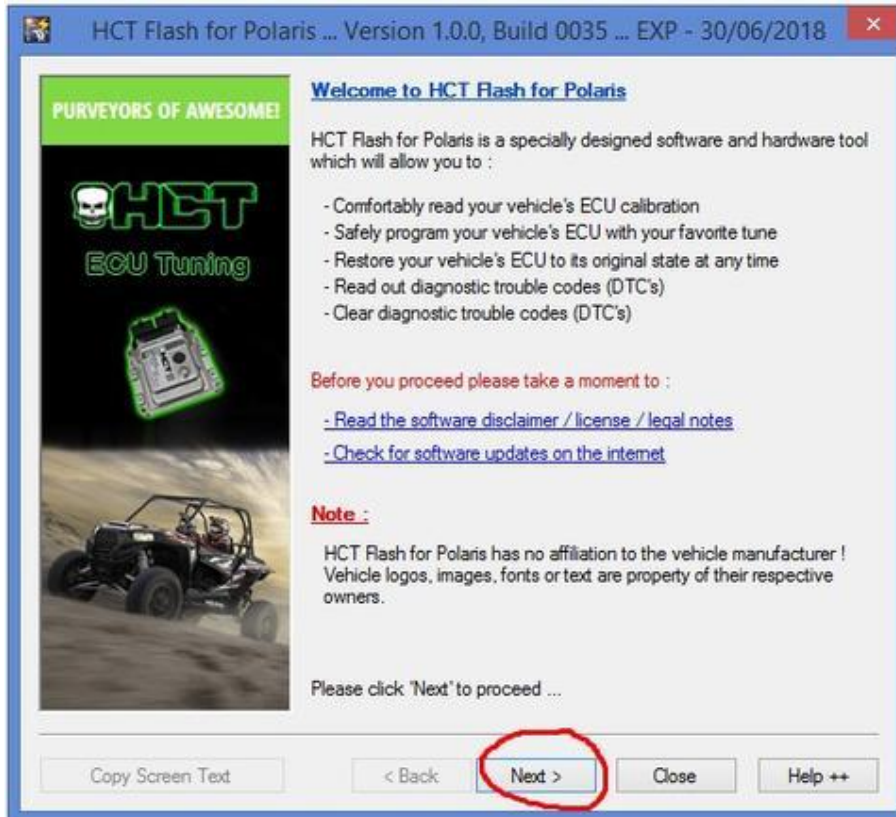




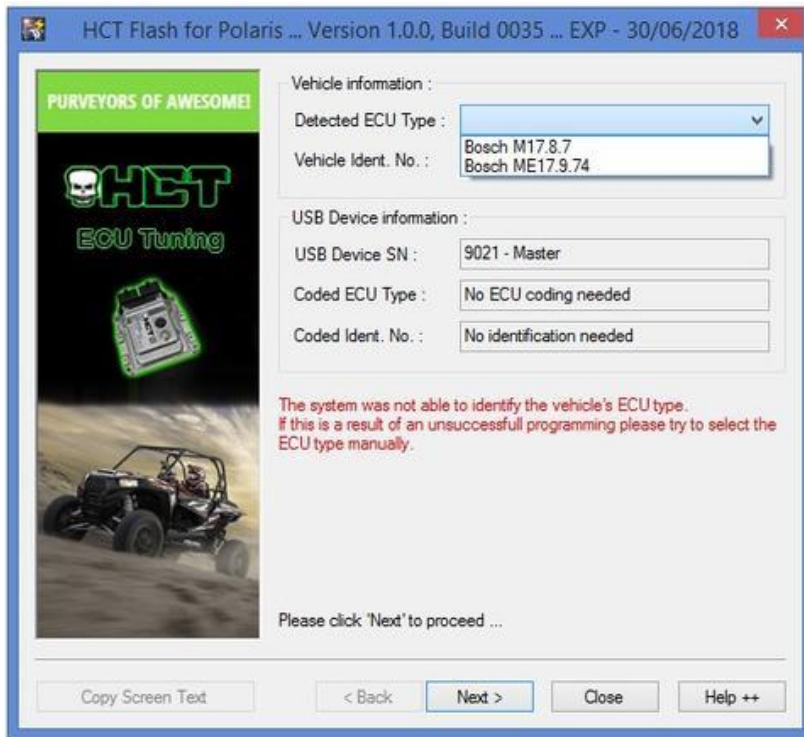


Step 1 – Launch the program and with the cable connected to the vehicle and your computer, then follow the prompts.

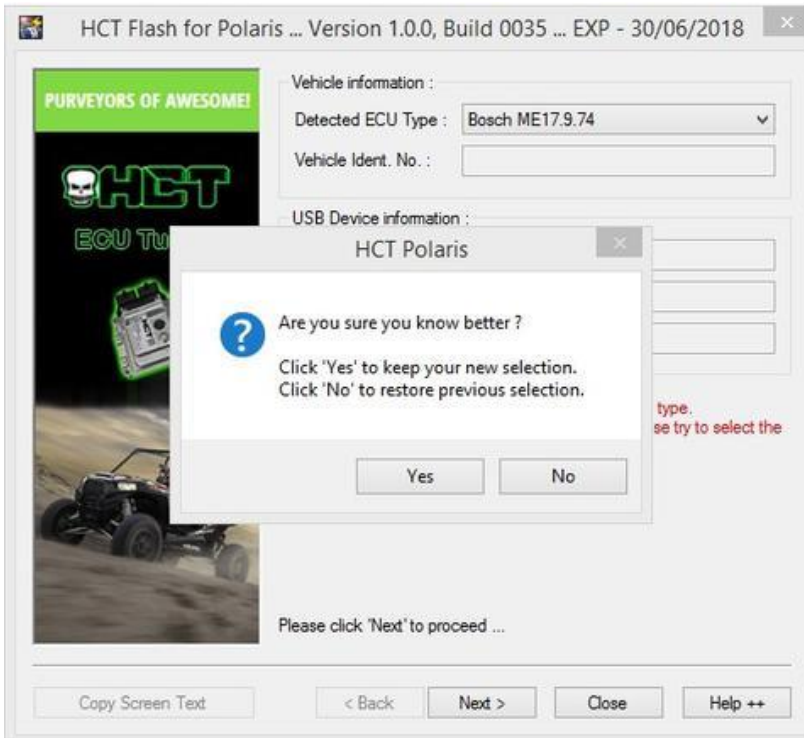




Step 2 – By default it will state the application was not able to collect enough information. You need to choose your ECU type. Can-Am is ME17.8 while most Polaris is ME17.9.74. Some early model Polaris are M17. If you are unsure which ECU type, see the sticker on the top of your ECU.



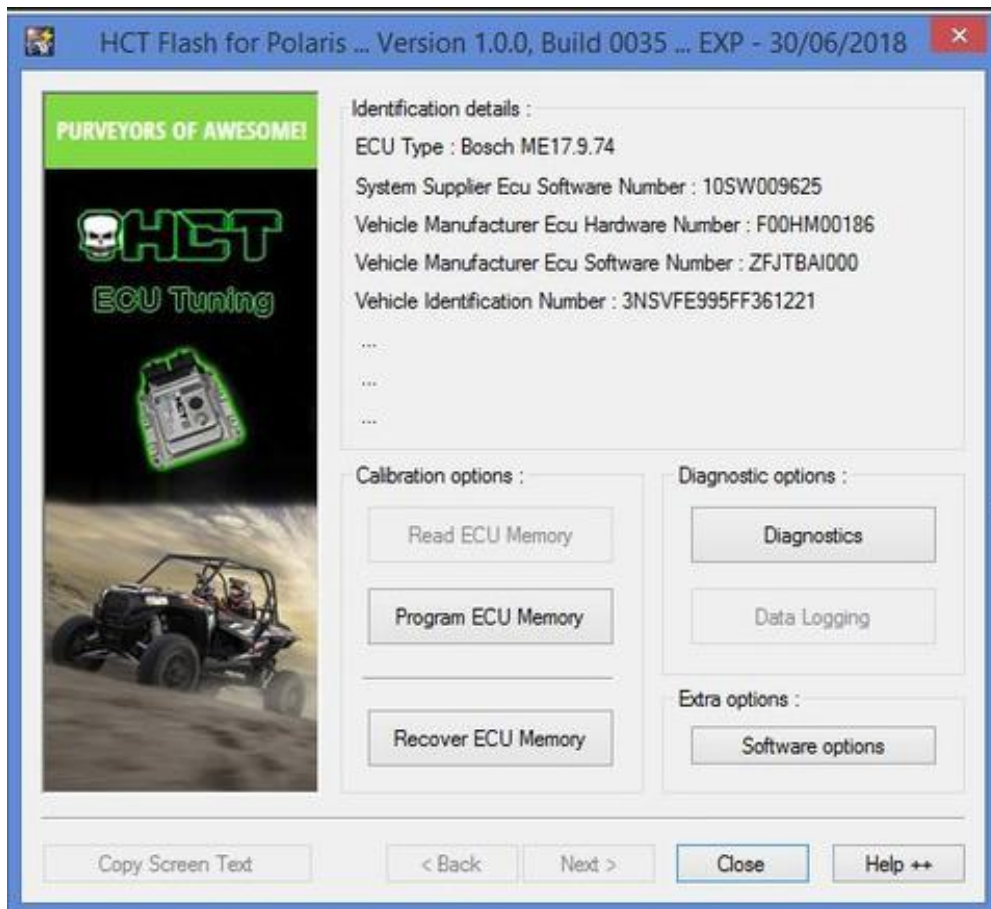
You will now pair your End User cable to your VIN and vehicle.



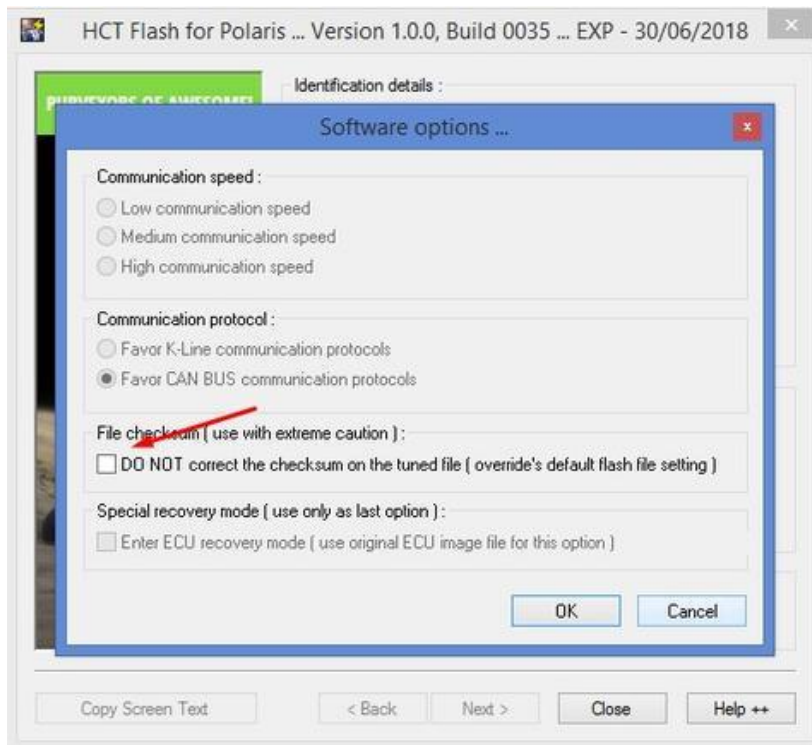
Step 3 – Take a screen shot of this image on your computer. It should show your VIN and software number. You can use your phone to take a picture as well. Then email this to sales@hardcore-tuning.com with:

- Your Name
- Your Order Number
- Year, Make, Model
- Modifications to Your Vehicle
- Notes or Comments

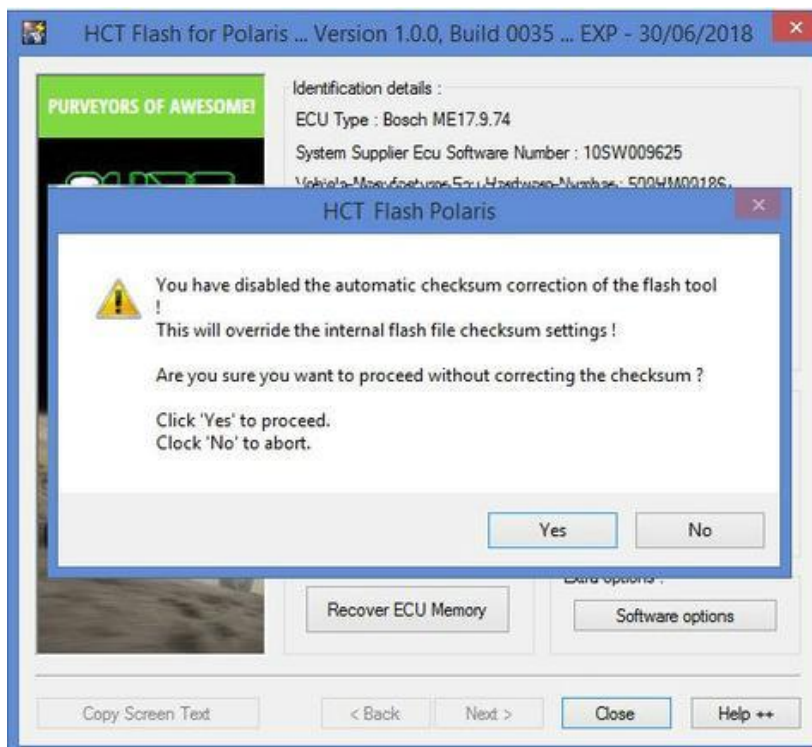
Once emailed, you can turn everything off and wait for us to send you back your tuned file. If you have already received your tuned file, proceed below.



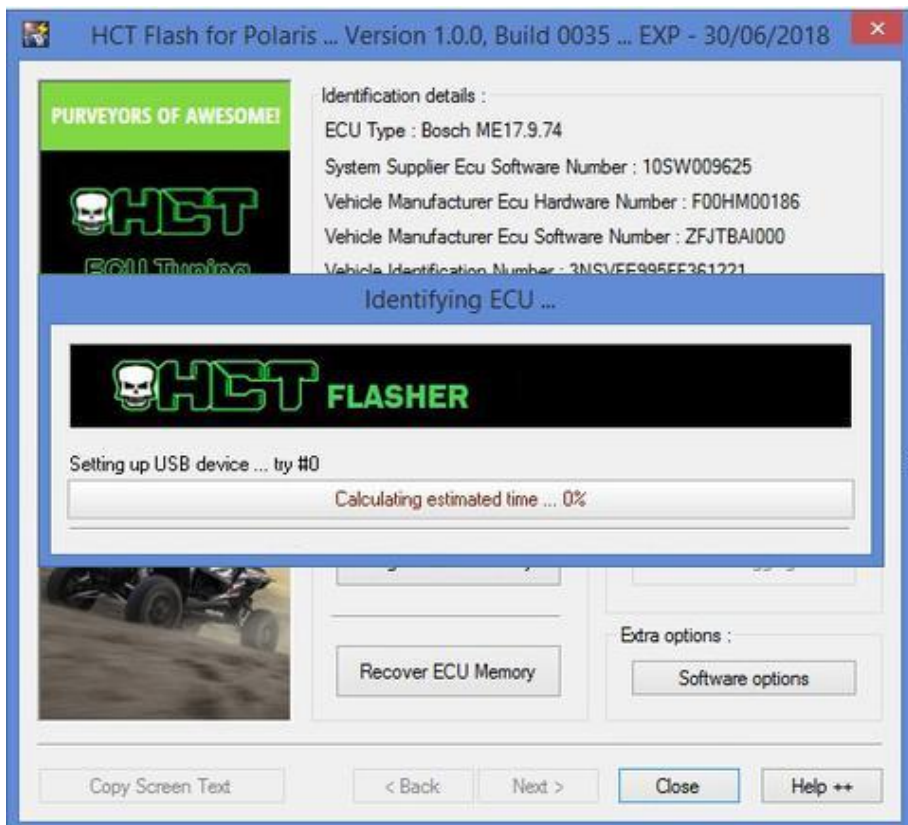
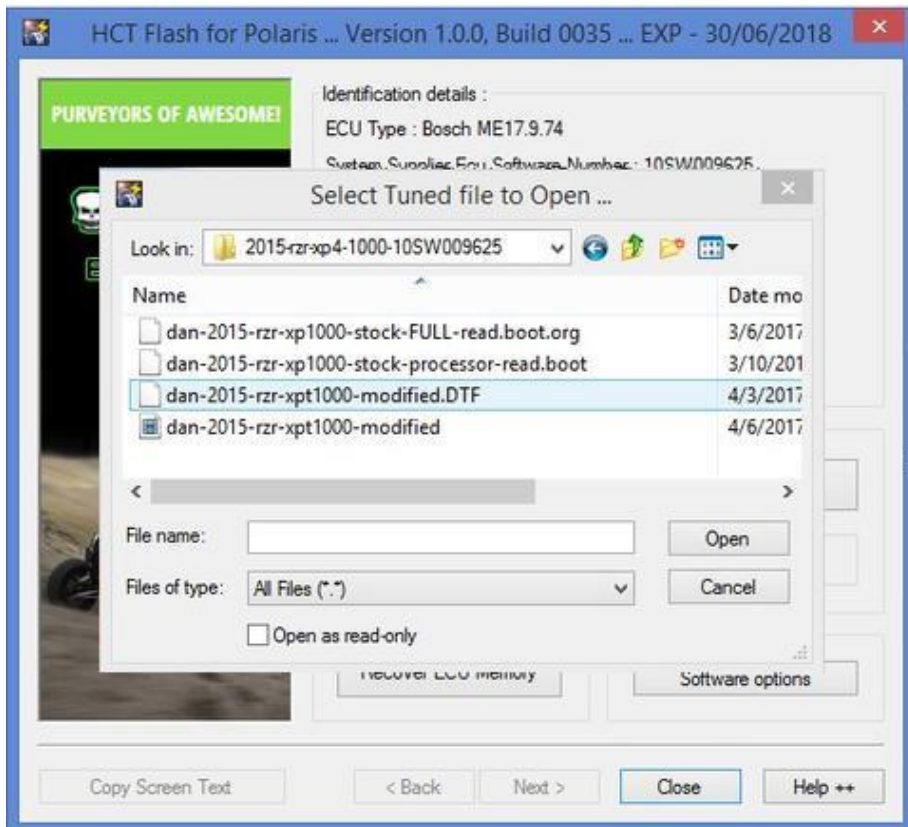
Step 4 – Now its time to program your ECU. You can use this same process to flash the stock or tuned files. Click Software Options and then check the button that says “Do Not correct the checksum... Hit OK.

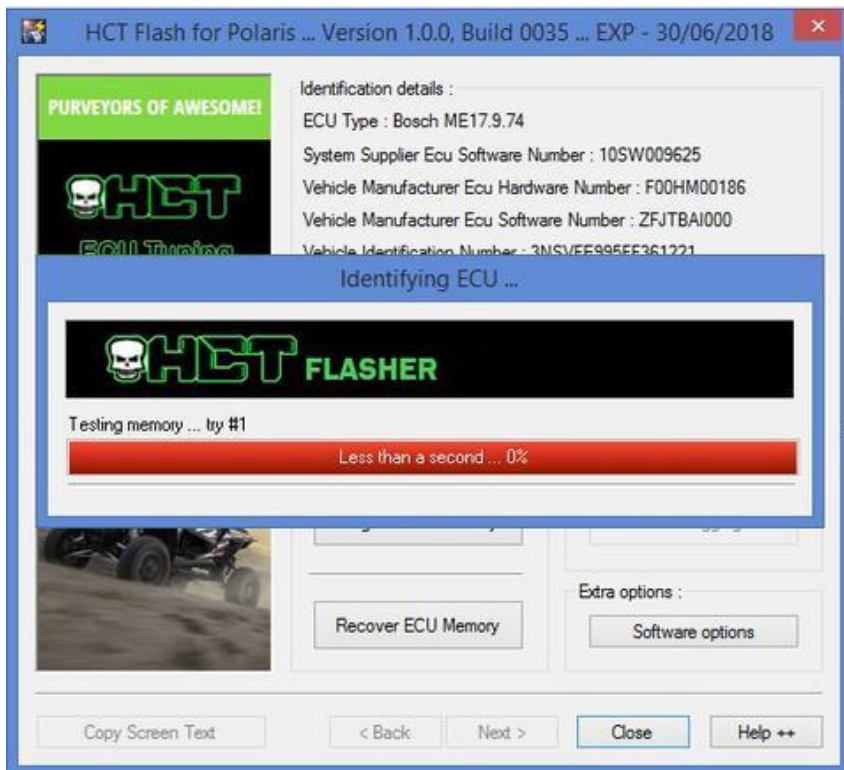
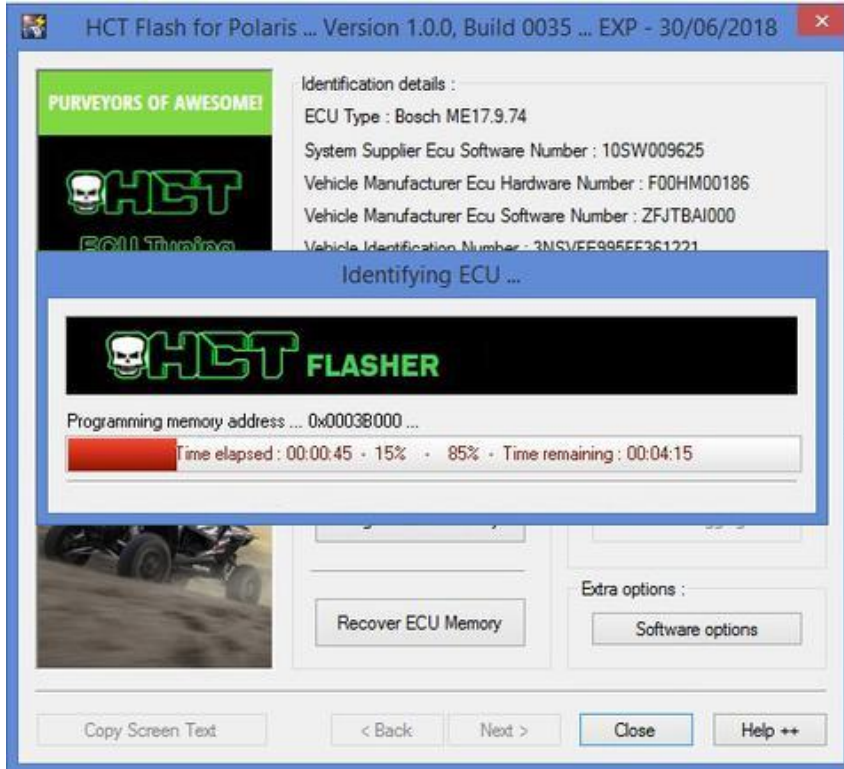


Click OK to accept.

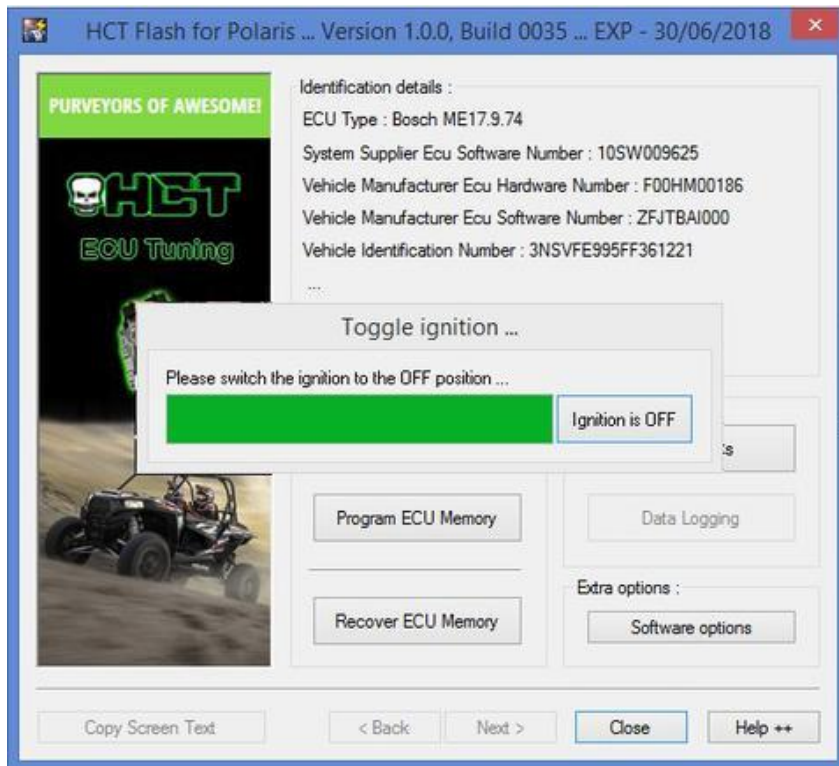


Step 6 – Click Program ECU Memory. Then select the tuned file from your computer where it was saved. The ECU programming sequence will go through. Do not turn anything off, let your computer go to sleep, or let the battery die.

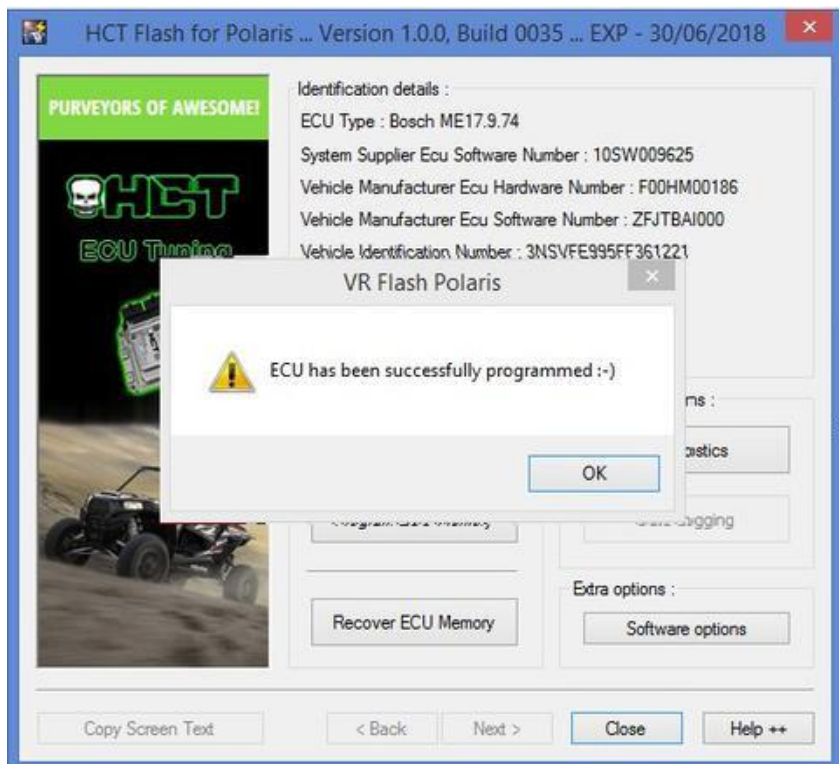




Step 7 – When the ECU programming is done, it will ask you to turn off your ignition. Proceed and click the off button.



Step 8 – Your ECU has been programmed!



Step 9 - Shred!