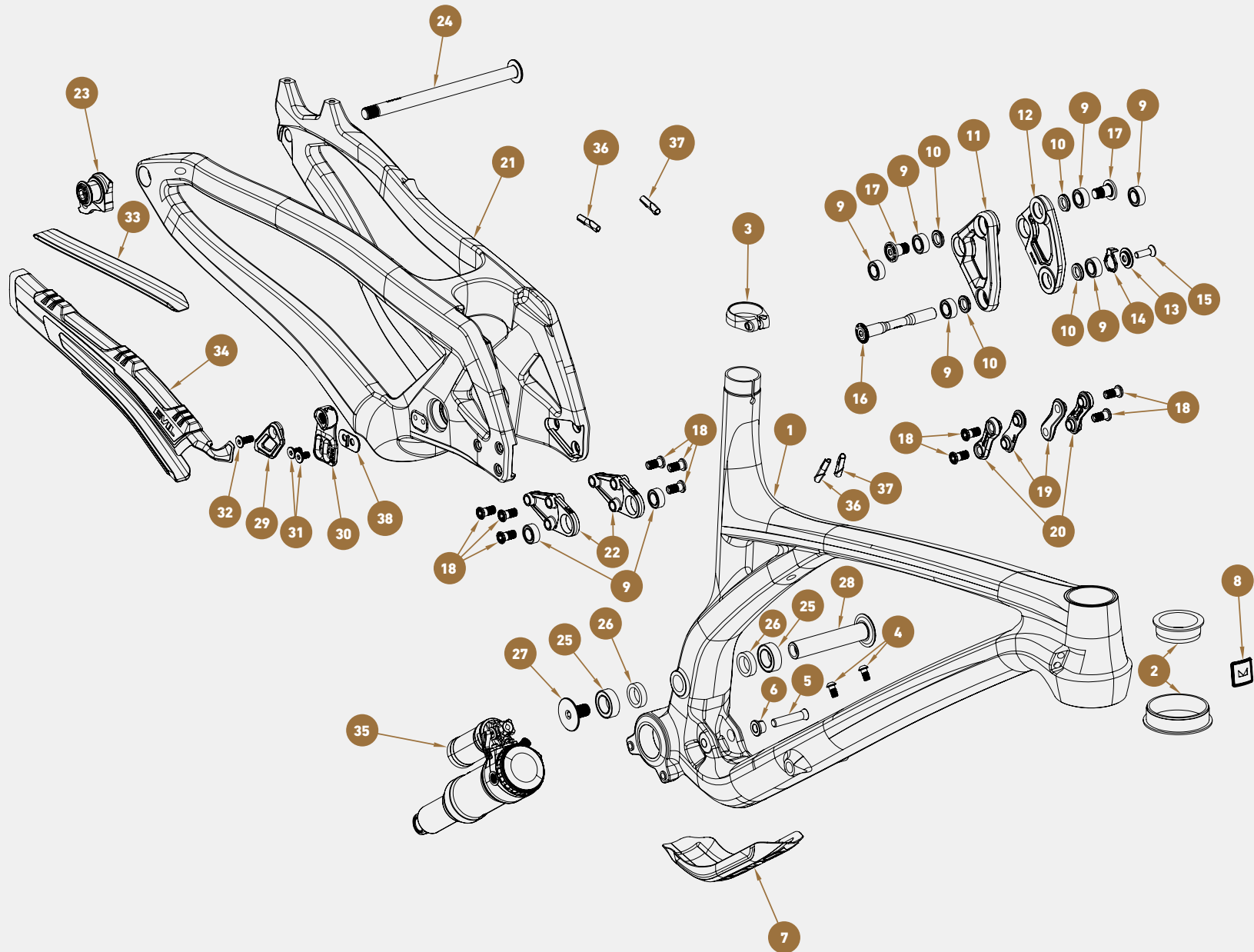


OFFERING LS

EXPLODED VIEW

Evil Bikes highly recommends using a torque wrench when assembling or tuning any part of your bike. Here is a list of specific items with their torque specs. Torque specifications can also be found on bike parts. It's important to note that over tightening and under tightening bolts can cause damage to the bike.



OFFERING LS

EXPLODED VIEW

Evil Bikes highly recommends using a torque wrench when assembling or tuning any part of your bike. Here is a list of specific items with their torque specs. Torque specifications can also be found on bike parts. It's important to note that over tightening and under tightening bolts can cause damage to the bike.

ITEM #	PART #	DESCRIPTION	QUANTITY	TORQUE	LUBRICATION	ITEM #	PART #	DESCRIPTION	QUANTITY	TORQUE	LUBRICATION
1	ELBF-10-B-M	FRONT TRIANGLE	1	-	-	27	50405_R2.0	MAIN PIVOT SCREW	1	165 IN-LB (18.6 NM)	LOCTITE
2	CANE11	CANE CREEK 40 HEADSET	1	-	GREASE	28	60104	MAIN PIVOT AXLE	1	-	GREASE
3	JD-SC66A-5	SEAT CLAMP 30.9	1	44 IN-LB (5 NM)	-	29	CHAN09	CHAIN GUIDE OUTER PLATE	1	-	-
4	M5XP02	BOTTLE CAGE BOLT	2	8.8 IN-LB (1 NM)	GREASE	30	CHAN19	CHAIN GUIDE INNER PLATE - UDH	1	-	-
5	50402_B	LOWER SHOCK BOLT	1	85 IN-LB (9.6 NM)	GREASE	31	M6X101	M6x12 LOWER CHAIN GUIDE BOLT	2	44 IN-LB (5 NM)	-
6	50403	SHOCK BOLT EXPANDER	1	-	-	32	M6X102	M6x16 UPPER CHAIN GUIDE BOLT	1	44 IN-LB (5 NM)	-
7	DTPR01	DOWNTUBE PROTECTION	1	-	-	33	SSPR01	SEAT STAY PROTECTION	1	-	-
8	EVLH01	HEAD TUBE BADGE	1	-	-	34	FFER19	CHAINSTAY RUBBER	1	-	-
9	11197V2RSMNK-KRBOLU	BEARING 11x19x7	8	-	-	35	00.4118.295.219	REAR SHOCK 185x55	1	-	-
10	CAPT01	DELTA LINK SPACER	4	-	-	36	CABL06	CABLE CLIP - 4mm	2	-	-
11	DELT25	DELTA LINK - DRIVE SIDE	1	-	-	37	CABL07	CABLE CLIP - 5mm	2	-	-
12	DELT26	DELTA LINK - NON-DRIVE SIDE	1	-	-	38	CHAN20	CHAIN GUIDE SPACER - 56.5MM	1	-	-
13	50309	SAG INDICATOR HOLDER	1	-	-						
14	50310B	SAG INDICATOR	1	-	-						
15	50323	DELTA PIVOT SCREW	1	65 IN-LB (7.4 NM)	LOCTITE						
16	50408	DELTA PIVOT AXLE	1	8.8 IN-LB (1 NM)	GREASE						
17	50603	UPPER SHOCK BOLT TRUNNION	2	65 IN-LB (7.4 NM)	LOCTITE						
18	50322	BONE LINK BOLT	10	65 IN-LB (7.4 NM)	GREASE						
19	BNEL10	BONE LINK - INNER	2	-	-						
20	BNEL11	BONE LINK - OUTER	2	-	-						
21	ELBRT-10-B	REAR TRIANGLE	1	-	-						
22	60111	FLIP CHIP	2	-	-						
23	00.7918.089.000	SRAM UDH HANGER	1	225 IN-LB (25 NM)	-						
24	AXLE05	REAR AXLE - 157 UDH	1	165 IN-LB (18.6 NM)	GREASE						
25	17289V2RSMNK-KR-BOLU	MAIN PIVOT BEARING 17x28x9	2	-	-						
26	STRA01	MAIN PIVOT SPACER	2	-	-						