

THE
CHAMOIS HAGAR

OWNERS MANUAL



EVIL™

TABLE OF CONTENTS

GEOMETRY & SPECS	05
EXPLODED VIEW	07
PARTS / REBUILD PARTS	08
HOUSING & BRAKE LINE ROUTING	09
FRAME ASSEMBLY	12
FRAME SETUP	13
CHAIN RUBBER INSTALL	15
DECAL INSTALL	16
MAINTENANCE	17
COCKPIT SET-UP	18
WARRANTY	19

Evil highly suggests building your bike properly to protect your safety. If you don't have the tools and aren't comfortable doing the work, take it to your local bike shop for professional assembly.

TOOLS NEEDED:

- 3mm - 6mm Hex Key Wrench
- 4mm T25 Torx (brake specific)
- Torque Wrench
- Isopropyl Alcohol
- Lint Free Rag
- Grease



THE
CHAMOIS HAGAR
SHRED COMES TO GRAVEL

WTF! That's right! You heard it correctly. Some of us here have been known to wear tighter-fitting clothes and pedal long distances to visit nature's delights, we also saw the huge dollar signs in gravel which could fund the development of other ridiculous projects like a beer-powered jet ski. We have made what appears to be, in fact, a gravel bike—but not just any gravel bike. This gravel bike or The Hagar as we call it, has borrowed some things from its fully suspended Evil family members.

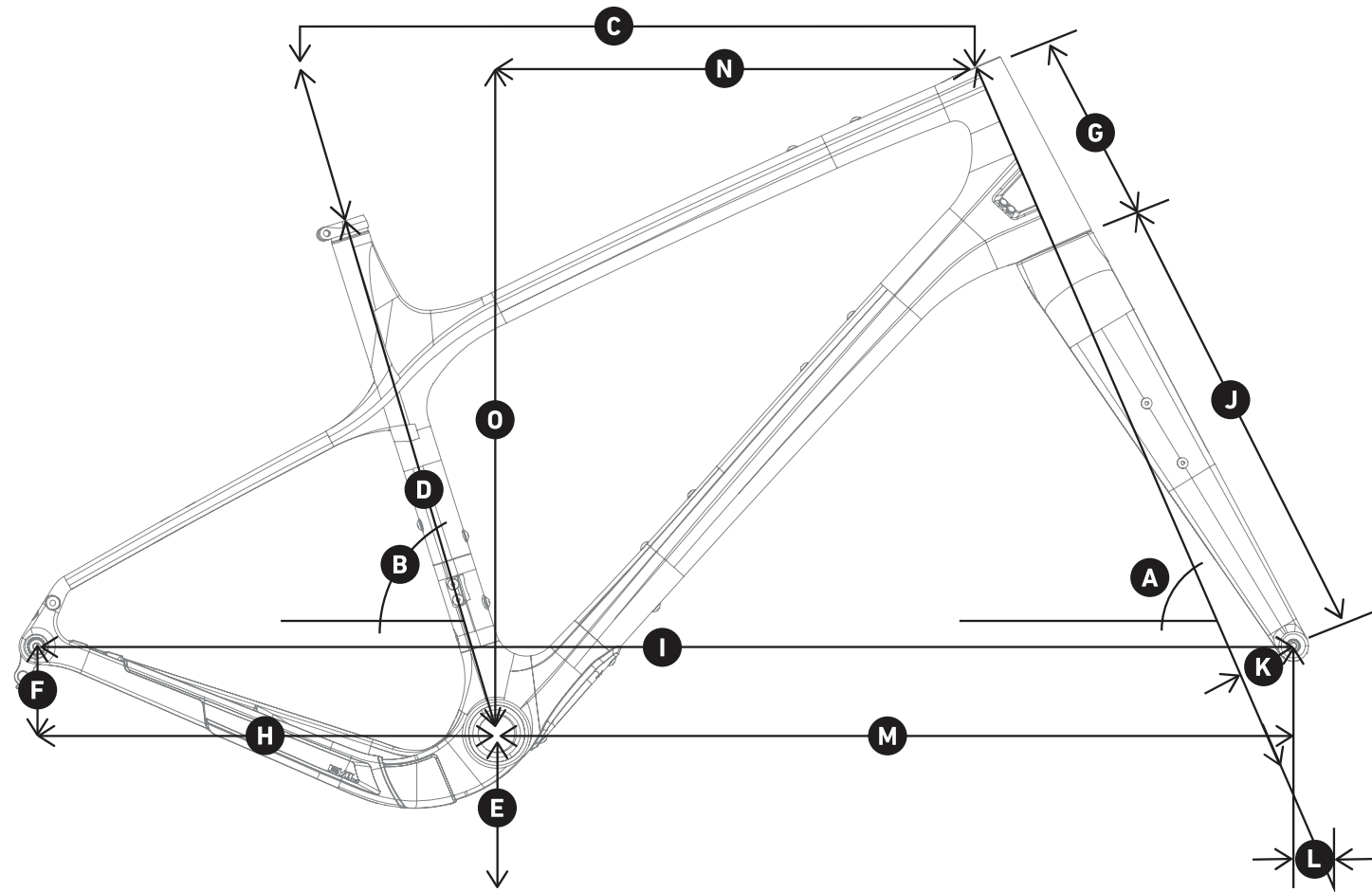
In an effort to be less terrified and have more fun we drew inspiration from the Offering which uses a longer front to center and reach, shorter stem, and 430mm chain stays to supply mountain bike stability and handling to the twitchy gravel category. We have added more trail and chain stay length for higher speeds both on and off gravel, while allowing for more party on singletrack.

In addition to aggressive geometry we added clearance for 50c tires for the most ambitious adventures. Super-low standover heights and dropper posts keep blood pressures in check when things point downward. 140-160mm flat mount or MTB discs hold down the stopping duties.

And while shred pumps through the Chamois Hagar's veins, versatility grounds the Hagar's infectious energy. Seven water bottle mounts, stealth rack and fender mounts, 1x and 2x options, close ratio and wide-range builds, internal routing, Di2 provisions, and 100x12/142x12 spacing just begin to tell its story. There's even rubber frame protection for when things get loose and rowdy. And while a 66.67° head tube angle may beckon berm-slapping daydreams, the Hagar begs to be ripped anywhere. For those wanting to tear legs off, we made sure it's at home devouring pavement on 34mm tires. For those wheeling to work, run a flat bar and bolt on a rack. Gritting your way through a weather-ravaged rando? Weather-sealed frame plugs keep the Chamois Hagar watertight. Our builds offer 125mm, 150mm and 180mm droppers so you still have room for a seatbag dropper while the multi water bottle boss layout allows for full or partial frame bags with hydration to spare—bikepacker's delight. If you're looking to pigeon hole, the Chamois Hagar defies classification. And shamefaced as we may be about now being in the gravel market, we're not even sure we're in it. Maybe we've invaded it, a hostile takeover—alert the press, gravel's been hijacked and the Chamois Hagar's here to party.

Because with the Chamois Hagar, you don't rethink riding. You board the Hagar and ride how you ride. It's meant for that. It wants it. Enough so that you ride that way even if it wasn't your intention, even if you're going long chasing light, searing past bewildered dirt tourists, or making your commute not suck. It has that effect—it is what it is and it isn't sorry about it—and that's just what we intended.

VELOCITY GEO



FRAME GEO

ITEM	S	M	L	XL
A. Head Tube Angle	66.67°	66.67°	66.67°	66.67°
B. Seat Tube Angle LOW	73°	74°	74°	74.5°
C. Virtual Top Tube Length	585mm 23.07"	605mm 23.80"	624mm 24.56"	643mm 25.33"
D. Seat Tube Length	450mm 17.72"	470mm 18.50"	490mm 19.29"	510mm 20.08"
E. Bottom Bracket Height	278mm 10.93"	278mm 10.93"	278mm 10.93"	278mm 10.93"
F. Bottom Bracket Drop	80mm 3.15"	80mm 3.15"	80mm 3.15"	80mm 3.15"
G. Head Tube Length	140mm 5.51"	160mm 6.30"	180mm 7.09"	200mm 7.87"
H. Chain Stay Length	430mm 16.93"	430mm 16.93"	430mm 16.93"	430mm 16.93"
I. Wheel Base	1098mm 43.22"	1126mm 44.32"	1154mm 45.42"	1182mm 46.52"
J. Axle to Crown	428mm 16.84"	428mm 16.84"	428mm 16.84"	428mm 16.84"
K. Fork Offset	57mm 2.23"	57mm 2.23"	57mm 2.23"	57mm 2.23"
L. Trail	93mm 3.64"	93mm 3.64"	93mm 3.64"	93mm 3.64"
M. Front to Center	680mm 26.77"	708mm 27.86"	736mm 28.96"	763mm 30.05"
N. Reach	408mm 15.75"	428mm 16.54"	448mm 17.32"	468mm 18.11"
O. Stack	575mm 22.66"	594mm 23.38"	612mm 24.10"	631mm 24.83"
Stand Over	662mm 26.08"	671mm 26.40"	682mm 26.85"	696mm 27.38"
Sizing	5'0" - 5'8"	5'7" - 6'0"	5'10" - 6'4"	6'3"
Road Sizing	43-52cm	53-56cm	57-60cm	61+cm

VELOCITY GEO

Let go of the brakes and you don't feel like a bushel of bowling balls just hit you in the back. You feel—nothing. Because the faster you go, the smoother it gets.

REAL REACH

Bringing a mountain mentality to drop-bar reach makes for a natural position—you can throw down, you can ride steady, you have both.

CUSTOM FORK

Forks designed around 66.8° head tubes, 50mm stems, and real reach? Not so much, so we made our own. It's big, smooth, and predictable with a 57mm offset and a 428mm axle-to-crown.

NOVERLAP

One of the most heinous road traits is toe overlap—turning the front wheel and demolishing your feet. The Chamois Hagar's Evil-approved front center GUARANTEES Noverlap—No toe Overlap. How can we GUARANTEE IT? With a 66.8° head tube angle, you WILL NOT hit your feet when you turn the bars. You are now free to turn like you enjoy riding.

GEARS FOR DAYS

1x and 2x options, close ratio and wide-range builds, internal routing and Di2 provisions.

01 TIRE OPTIONS



The Chamois Hagar'll be your huckleberry — throw on some 700 x 34s, devour pavement. Add 700 x 50s, hit the extra-credit line, just don't go smaller in diameter than 650 x 50mm or you'll be striking pedals.



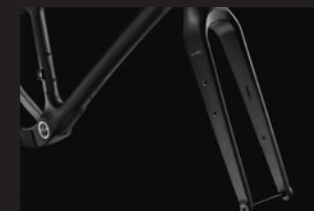
02 142X12



The go-to rear-axle size for gravel leaving plenty of wheelset options open for when hunting down lightweight road wheels or wider, mountain-tough options.



03 MOUNT UP



Seven bottle mounts (six for size SM) with three inside the front triangle make for enough tequila for a small family of moderate tolerances or one Evil rider.



04 WEATHER-SEALED FRAME



We reside in the PNW, which might as well stand for Pacific North Wet. Our snug frame plugs keep contamination out.



05 BOTTOM BRACKET DROP



We use 80mm of drop, unheard of for gravel bikes. It keeps big tires glued, provides innate cornering, and unflappable stability.



06

07

08

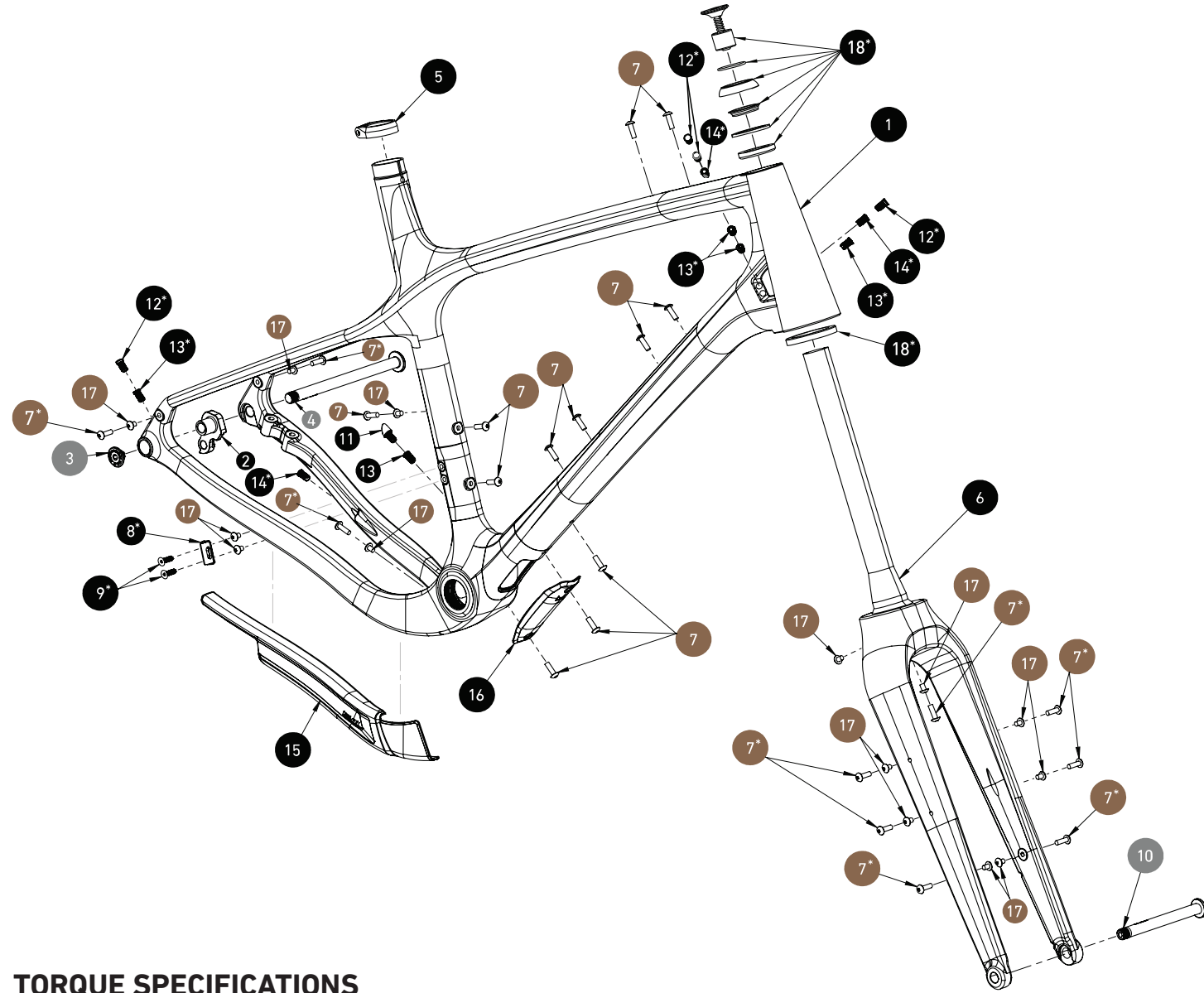
09

10

EXPLODED VIEW

● GREASED PART ● THREAD LOCKED PART

*PART COMES IN POLY BAG KIT, NOT ASSEMBLED ON FRAME
*APPLY THREAD LOCK TO THE TREADS ONLY



TORQUE SPECIFICATIONS

EVIL highly recommends to use a torque wrench when assembling or tuning any part of your bike. Here is a list of specific items with their torque specs. Torque specifications can also be found on bike parts. It's important to note that over tightening bolts can cause damage to the bike.

EXP. REF	ITEM	PART NO.	TORQUE
3	DERAILLEUR HANGER CAP NYLOC	50419	85 in-lb (9.60 Nm)
4	REAR AXLE, 166 x 12mm, M12 x 1.5	50430-166	165 in-lb (18.64 Nm)
5	SEAT CLAMP 30.9mm W/ EVIL LOGO	50348	44 in-lb (5 Nm)
7	ALLOY WATER BOTTLE BOLTS 16mm	M5XP02	18 in-lb (2 Nm)
9	FRONT DERAILLEUR BRAZE ON HANGER SCREW	70125	18 in-lb (2 Nm)
10	FRONT AXLE, 120 x 12mm BOLT ON, 5mm HEX	70430-120B	84-111 in-lb (9 -12.5 Nm)
17	ALLOY WATER BOTTLE BOLTS 7mm	M5XP01	18 in-lb (2 Nm)

PARTS / REBUILD PARTS

PARTS ARE AVAILABLE IN SPECIFIC KITS AT EVIL-BIKES.COM

PART SPECIFICATIONS

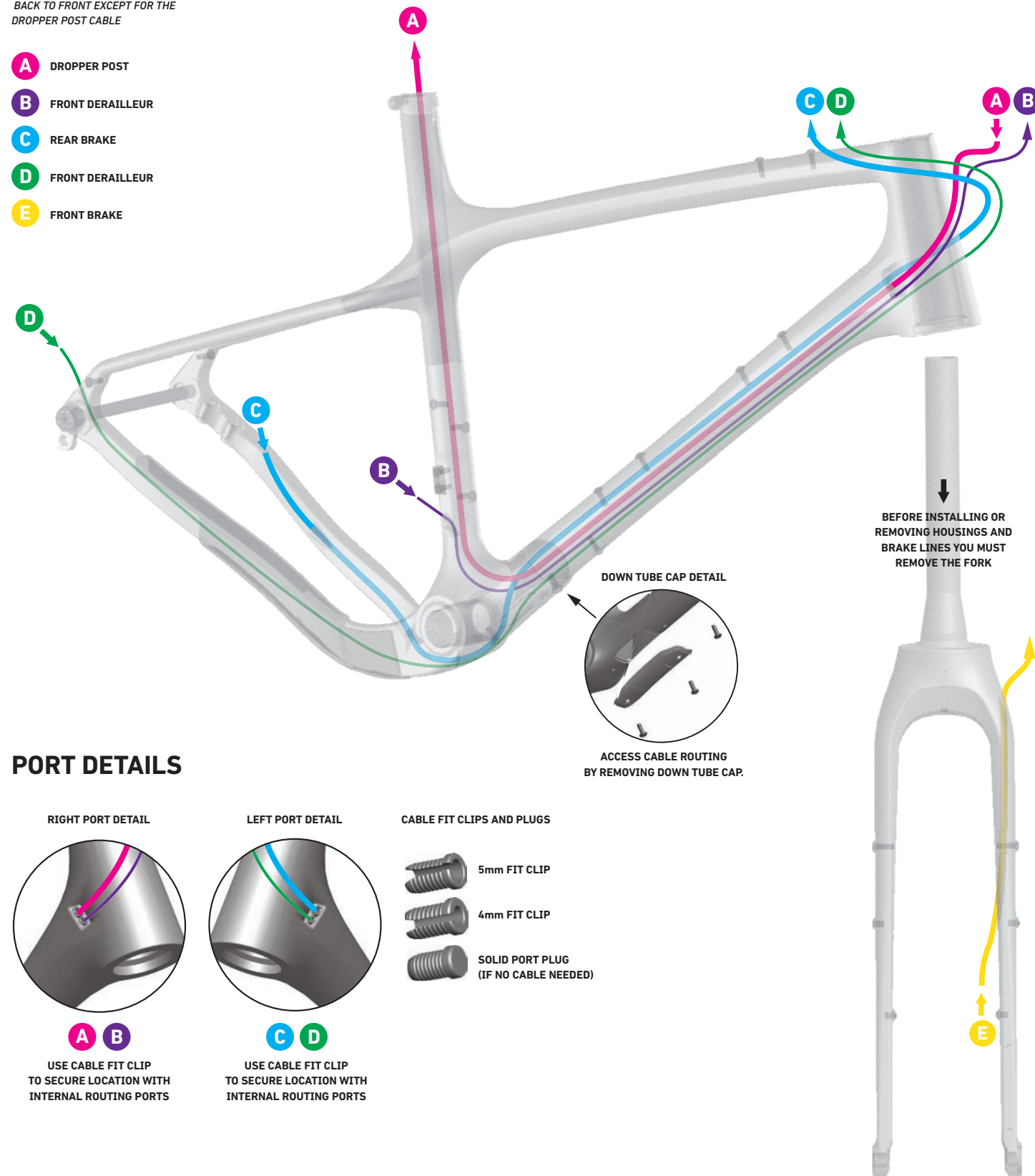
ENG. PART#	EXP. REF	ITEM	QTY
AXLE04 AXLE KIT - CHAMOIS HAGAR			
50430-166	4	REAR AXLE, 166 x 12mm, M12 x 1.5	1
50420	2	DERAILLEUR HANGER 12mm BOLT ON	1
50419	3	DERAILLEUR HANGER CAP NYLOC	1
FRNT03 FRONT AXLE			
70430-120B	10	FRONT AXLE, 120 x 12mm BOLT ON, 5mm HEX	1
DERA04 DERAILLEUR HANGER KIT			
50420	2	REAR HANGER 12mm BOLT ON	1
50419	3	REAR HANGER CAP	1
FRNT01 FRONT DERAILLEUR KIT			
70124	8	FRONT DERAILLEUR BRAZE ON HANGER	1
70125	9	FD BRAZE ON HANGER SCREW	2
FRAM06 FRAME PROTECTION KIT			
DWNT01	16	DOWN TUBE CAP	1
CHAN06	15	CHAIN STAY PROTECTION CHAMOIS	1
CABL08 CABLE FIT CLIP KIT - CHAMOIS HAGAR			
FDEX01	11	FRONT DERAILLEUR EXIT PORT PLUG, RUBBER	1
LDPR01	12	SOLID PORT PLUG, PLASTIC	4
CABL04	13	CABLE FIT CLIP 4mm, PLASTIC	5
CABL05	14	CABLE FIT CLIP 5mm, PLASTIC	2
SEA-CLP-ALL SEAT POST CLAMP, 30.9			
50348	5	SEAT CLAMP 30.9mm W/ EVIL LOGO	1
WATE01 WATER BOTTLE BOLT KIT - CHAMOIS HAGAR			
M5XP02	7	ALLOY WATER BOTTLE BOLTS 16mm	22
M5XP01	17	ALLOY WATER BOTTLE BOLTS 7mm	14
CANE04 CANE CREEK EVIL GRAVEL HEADSET			
CAA2031K-01	18	CANE CREEK 40 SERIES EVIL GRAVEL HEADSET	1

HOUSING & BRAKE LINE ROUTING

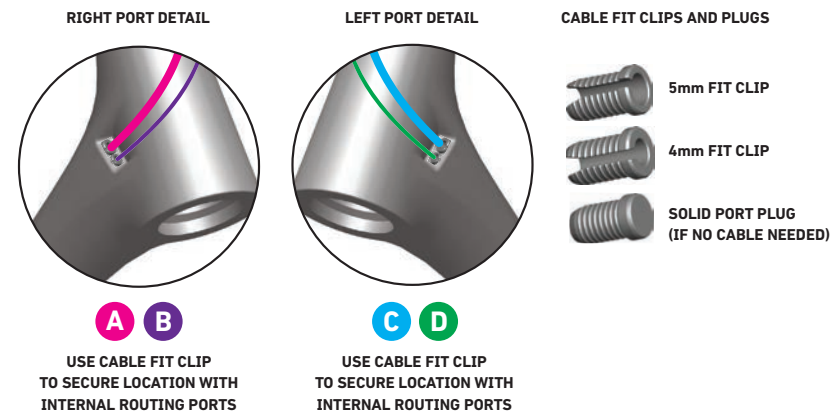
FRAME ROUTING DIAGRAM

*FEED ALL CABLES FROM BACK TO FRONT EXCEPT FOR THE DROPPER POST CABLE

- A** DROPPER POST
- B** FRONT DERAILLEUR
- C** REAR BRAKE
- D** FRONT DERAILLEUR
- E** FRONT BRAKE



PORT DETAILS



USE CABLE FIT CLIP TO SECURE LOCATION WITH INTERNAL ROUTING PORTS

USE CABLE FIT CLIP TO SECURE LOCATION WITH INTERNAL ROUTING PORTS

HOUSING & BRAKE LINE ROUTING

INSTALLATION

The Chamois Hagar's internal frame routing provides a clean, uninterrupted solution for routing your cable housing and brake lines. If you're unsure or uncomfortable installing your cables after reading through these instructions please consult with your local bicycle specialist.

A DROPPER POST

STEP 01



If installed, remove fork from frame and with a 3mm hex key, remove the down tube cap (DWNT01).

STEP 02



Starting at head tube, insert dropper cable housing into upper right (drive side upper) cable port. *Note: the dropper post is the only housing that you start from the front of the bike.*

STEP 03



Feed housing down the down tube, over bottom bracket and up seat tube until exiting seat tube near the seat collar. You can help guide the cable with your fingers through the down tube cap opening. **NOTE:** Route over the top of internal bottom bracket shell.

B FRONT DERAILLEUR

STEP 01



If installing a front derailleur, remove FRONT DERAILLEUR EXIT PORT PLUG (FDEX01) on the backside of the down tube and insert front derailleur housing into port. Guide cable over internal bottom bracket shell and up through the down tube.

STEP 02



Using finger to guide housing from inside the head tube, exit cable through the lower right (drive side) port.

C REAR BRAKE

STEP 01



Insert rear brake line trough inside port on left chain stay.

STEP 02



Using the down tube window, rout rear brake line under internal bottom bracket and up down tube.

STEP 03



Using finger to guide brake line from inside the head tube, exit brake line through the upper left port.

HOUSING & BRAKE LINE ROUTING

INSTALLATION CONTINUED

D REAR DERAILLEUR

STEP 01



Install rear derailleur housing into back port of the right (drive side).

STEP 02



Using the down tube window, route rear derailleur housing under internal bottom bracket and up down tube.

STEP 03



Using finger to guide rear derailleur housing from inside the head tube, exit cable through the bottom left port.

STEP 04



With a 3mm hex key, reattach the down tube cap (DWNT01).

STEP 05



Now that all cable housing and brake lines have been run, it's time to build the rest of your bike. **NOTE:** Dropper post housing length is relative to your personal saddle height. All housing and brake line length need to be adjusted appropriately to your custom bike fit.

E FRONT FORK BRAKE LINE

STEP 01



After assembling fork (as shown in next section) guide front brake line up through inside port.

STEP 02



Guide brake line up through the top port leaving enough line to cut to custom length.

FRAME ASSEMBLY

ASSEMBLING YOUR FRAME

The following pages are meant to help you assemble the main components specific to this frame. Please refer to the component manufacturer's assembly specifications and instructions for further assistance if necessary.

FIT CLIPS, PLUGS AND CAPS

STEP 01



Fit Clips come in 2 sizes, 5mm and 4mm. Sizes accommodate the outer diameter of the cable housing and the brake lines. Also included are Solid Port Plugs and a Rear Hanger Cap. Refer to the exploded view drawing for placement and location.

STEP 02



Once cables and lines are in final position insert Fit Clips and Port Plugs in to ports where needed.

STEP 03



Example of Rear Hanger Cap installed on the bottom of seat tube.

FORK INSTALL

STEP 01



Lightly apply grease to upper and lower integrated headset cups inside head tube.

STEP 02



Lightly apply grease to integrated crown race located on fork crown.

STEP 03



Install bearing over steer tube and onto fork crown race. Make sure bearing is in correct orientation and is seated correctly onto the integrated fork crown race.

STEP 04



With bearing installed onto fork, insert fork into bottom head tube opening. Ensure bottom bearing is correctly seated in lower integrated headset cup.

STEP 05



With fork installed into frame, install upper bearing onto steerer tube and into upper integrated headset up. Ensure upper bearing is in correct orientation.

STEP 06



Install top cover assembly onto steerer tube and into upper bearing. Ensure top cover assembly is in the correct orientation. **NOTE:** Installing spacers, stem and cutting steer tube to size will vary with individual bike setup.

FRAME SETUP

SETTING UP YOUR FRAME

Although components for the Chamois Hagar may vary per individual assembly, here are the basics for assembling derailleurs, brakes, and axles. Please refer to the component manufacturer's assembly specifications and instructions for further assistance if necessary.

BRAZE-ON FRONT DERAILLEUR INSTALL

STEP 01



With 3mm hex key, remove bolts from braze-on mounting inserts located on the drive side seat tube.

STEP 02



Install braze-on front derailleur hanger onto frame. Ensure hanger is in correct orientation as shown. Torque to 5 Nm.

REAR DERAILLEUR HANGER INSTALL

STEP 01



Before hanger installation, ensure dropout area is clean and free of dirt and debris. Insert hanger into frame. Ensure hanger is in correct orientation and mates correctly with frame.

STEP 02



With 5mm hex key, install rear derailleur hanger bolt and torque to 85 in-lbs.

STEP 03



Example of final assembly with hanger installed from left side.

BRAKE MOUNT

STEP 01



Ensure mounting surface on fork is clean and flat. With a 4mm hex key or T-25 Torx wrench align brake caliper with inserts and lightly tighten bolts. Bolts should be tightened to torque specs once the wheel and rotor have been attached and aligned. **Note:** Install using hardware provided by brake manufacturer.

STEP 02



Ensure mounting surface is clean and flat. With a 4mm hex key or T-25 Torx wrench align brake caliper and lightly tighten bolts. Tighten to torque specs once the wheel and rotor have been attached and aligned. **Note:** Bolt length and spacing washers are specific to frame width and brake assembly. Chamois Hagar rear chain stay width: 20mm.

FRAME SETUP

REAR AXLE MOUNT

STEP 01



Lightly apply grease to the axle shaft and insert into the hole.

STEP 02



With a 6mm hex key tighten axle bolt to 165in-lb (18.64 Nm).

FRONT AXLE MOUNT

STEP 01



Lightly grease axle, align with wheel and insert.

STEP 02



With a 5mm hex key tighten axle bolt to 80-105 in-lb (9-12.5 Nm).

CHAIN RUBBER INSTALL

FRAME PROTECTION

Protecting your bike from damage in common wear zones is critical to the longevity of your frame. Re-installing factory rubber protection is simple and easy.

PROTECTION INSTALL

STEP 01



Clean drive side chain stay and bottom bracket area with isopropyl alcohol. Make sure no dirt or residue is left on frame.

STEP 02



Locate correct install position and location on frame before install

STEP 03



Remove protective film from chain stay rubber adhesive tape

STEP 04



Align radius on the bottom of rubber to the radius on the drive side chain stay. Apply pressure to secure lower corner of rubber.

STEP 05



Evenly apply pressure from front to back adhering the rubber to the chain stay.

STEP 06



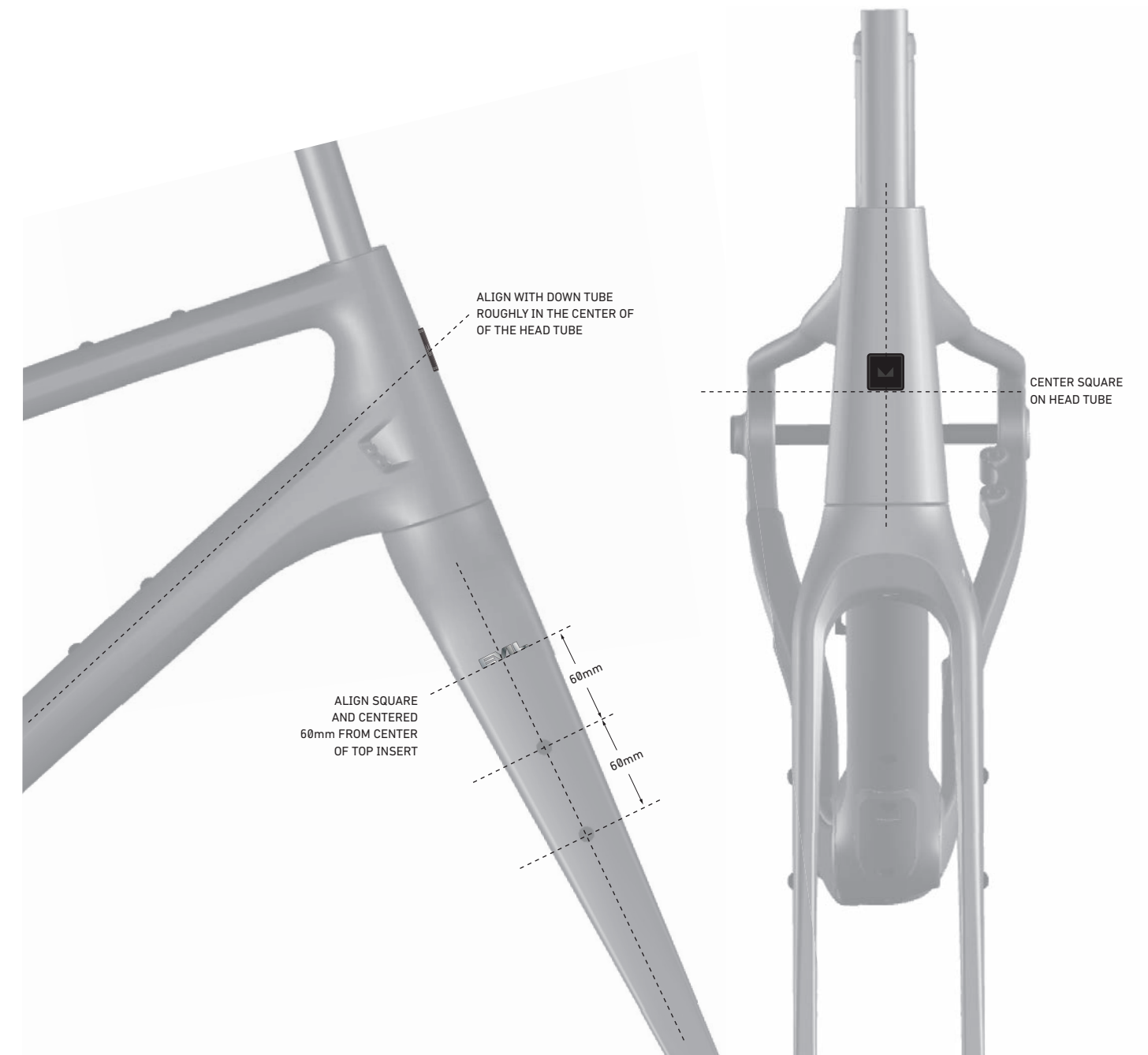
Firmly apply pressure to all surfaces of the rubber adhering all sides the chain stay. Final location shown.

DECAL INSTALL

CUSTOMIZE YOUR RIDE

Evil believes in leaving the flavor in your hands. We've provided removable decals in order for you to have the option to trick out your bike how ever you like. With that said, here are instructions on how to apply the current factory placed graphics.

REPLACEMENT KITS AVAILABLE ONLINE



MAINTENANCE

SCHEDULED MAINTENANCE

Following these guidelines will help maintain the performance of your bicycle and prevent serious problems from happening. It is important to remember that service intervals can vary depending on climate, trail conditions and riding frequency. If you are unsure about working on your own bicycle, contact your local bicycle shop or an authorized Evil dealer. For more information on general bicycle maintenance that pertains to your new Evil go to evil-bikes.com.

AFTER FIRST RIDE ON YOUR NEW EVIL

CHECKLIST

ENSURE REAR DERAILLEUR HANGER CAP IS TIGHT AND TORQUED TO 85 in-lb (9.60 Nm)	
ENSURE REAR AXLE IS TIGHT AND IS TORQUED TO 165 in-lb (18.64 Nm)	
ENSURE REAR DERAILLEUR IS TIGHT AND IS TORQUED TO MANUFACTURERS SPEC	
ENSURE FRONT AXLE IS TORQUED TO 84-111 in-lb (9.5 -12.5 Nm)	
ENSURE CRANK SET AND IS TORQUED TO MANUFACTURERS SPEC	
ENSURE BRAKE FRONT BRAKE CALIPER IS TORQUED TO MANUFACTURERS SPEC	
ENSURE REAR BRAKE CALIPER IS TORQUED TO MANUFACTURERS SPEC	
ENSURE ALL STEM BOLTS ARE TORQUED TO MANUFACTURERS SPEC	
ENSURE ALL SPOKES ARE TENSIONED TO MANUFACTURERS SPEC	
ENSURE SEAT COLLAR IS TORQUED TO 84-111 in-lb (9 -12.5 Nm)	
ENSURE FRONT BRAKE ROTOR IS TORQUED TO MANUFACTURERS SPEC	
ENSURE REAR BRAKE ROTOR IS TORQUED TO MANUFACTURERS SPEC	

REGULAR MAINTENANCE

INSPECTION	WEEKLY	MONTHLY	3 MONTHS	ANNUALLY
CLEAN AND LUBE CHAIN	X			
CHECK BRAKE FUNCTION	X			
CHECK TIRE PRESSURE	X			
CLEAN BIKE OF MUD AND DEBRIS	X			
CHECK FOR LOOSE BOLTS AND TIGHTEN IF NECESSARY		X		
CHECK BRAKE PADS, REPLACE IF NECESSARY		X		
CHECK TIRES FOR WEAR, REPLACE IF NECESSARY			X	
CHECK SPOKE TENSION AND RETENTION, REPLACE IF NECESSARY			X	
CHECK CHAIN WEAR, REPLACE IF NECESSARY			X	
COMPLETE TUN-UP PERFORMED BY AN AUTHORIZED EVIL DEALER				X

COCKPIT SETUP

FRAME POSITION

Self-fitting and correct positioning are one of the most important factors in getting the maximum performance out of your bicycle. Whether you choose to get a professional fitting, do it yourself, or have a friend help you, Evil highly advises taking the time to fit your bike properly.



SADDLE & BAR POSITION

Loosen seat collar bolt. With dropper post fully extended, adjust height to correct position. Correct position is defined by a 30° knee bend angle at the bottom of crank rotation. Saddle height should be level, or close to level, with handlebar height. Once correct saddle height position is found, use 4mm hex key to tighten seat collar bolt to 44 in-lb (5 Nm).



BRAKE HOODS

STEP 01



Brake hoods level (smooth transition) with handlebar

STEP 02



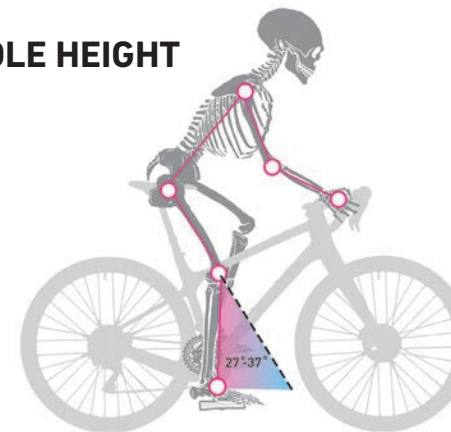
Brake hoods in line with the drop sweep

STEP 03



Brake hoods level with each other and level with ground

SADDLE HEIGHT



With Dropper post fully extended, adjust height to correct position by loosening seat collar bolt. Correct position is defined by a 27°- 30° knee bend angle at the bottom of crank rotation.



Position yourself at center of seat rails. When pedaling seated on saddle, knee should not extend in front of pedal spindle.



THIS LIMITED WARRANTY GIVES YOU SPECIFIC LEGAL RIGHTS AND YOU MAY ALSO HAVE OTHER RIGHTS, WHICH VARY FROM STATE TO STATE, PROVINCE TO PROVINCE, AND COUNTRY TO COUNTRY.

THE LIMITED WARRANTY CAN ALSO BE FOUND ONLINE AT [HTTPS://WWW.EVIL-BIKES.COM/PAGES/WARRANTY-POLICY](https://www.evil-bikes.com/pages/warranty-policy) OR IN THE DOCUMENTATION WE PROVIDE WITH THE PRODUCT.

WE WARRANT THAT DURING THE WARRANTY PERIOD, THE PRODUCTS SPECIFIED BELOW WILL BE FREE FROM DEFECTS IN MATERIALS AND WORKMANSHIP.

WE LIMIT THE DURATION AND REMEDIES OF ALL IMPLIED WARRANTIES, INCLUDING WITHOUT LIMITATION THE WARRANTIES OF MERCHANTABILITY AND FITNESS FOR A PARTICULAR PURPOSE TO THE DURATION OF THIS EXPRESS LIMITED WARRANTY.

SOME JURISDICTIONS, STATES, AND PROVINCES DO NOT ALLOW LIMITATIONS ON HOW LONG AN IMPLIED WARRANTY LASTS, SO THE ABOVE LIMITATION MAY NOT APPLY TO YOU.

OUR RESPONSIBILITY FOR DEFECTIVE GOODS IS LIMITED TO REPAIR OR REPLACEMENT AS DESCRIBED BELOW IN THIS WARRANTY STATEMENT.

1. WHO MAY USE THIS WARRANTY?

Evil Bikes LLC located at address 700 Harris Avenue, Bellingham, WA 98225 USA ("we" or "us" or "Evil") extend this limited warranty only to the consumer who originally purchased the product directly from us or from our authorized dealer ("you"). It does not extend to any subsequent owner or other transferee of the product.

2. WHAT DOES THIS WARRANTY COVER?

This limited warranty covers defects in materials and workmanship of the Evil products specified below (the "product") for the Warranty Period as defined below.

3. WHAT DOES THIS WARRANTY NOT COVER?

This limited warranty does not cover any damage due to: (a) transportation; (b) improper assembly, storage or use; (c) failure to follow the product instructions or to perform any preventive maintenance; (d) modifications to the product not approved by us; (e) unauthorized repair; (f) normal wear and tear; or (g) external causes such as accidents, crashes, neglect, abuse, or other actions or events beyond our reasonable control; (h) with respect to frame paint, the use or application of adhesives or decals not supplied by us, or the use of chemicals not intended for cleaning painted surfaces.

This limited warranty also does not cover third party components on any Evil bicycle. Third party components may be covered by their respective manufacturer's warranty. For warranty information and service for third party components, please contact their respective manufacturer. Should the manufacturer require that you process such warranty claim through the business from whom you purchased the third party component, please contact either our authorized dealer or Evil customer service, and our authorized dealer or we will be able to provide assistance and facilitation of such warranty claim.

4. WHAT IS THE PERIOD OF COVERAGE?

This limited warranty starts on the date of your purchase and lasts for

- Evil bike frames released from December 2019 (starting with Chamois Hagar), for the **lifetime** of the bike frame;
- Evil bike frames released prior to December 2019, for **3 years**;
- Evil bike frame paint, for **2 years**; and
- Evil bike frame bearings, for **1 year**

(the "Warranty Period").

Except in relation to the lifetime warranty period on Evil bike frames, the Warranty Period is not extended if we repair or replace the product. We may change the availability of this limited warranty at our discretion, but any changes will not be retroactive.

5. WHAT ARE YOUR REMEDIES UNDER THIS WARRANTY?

With respect to any product which we determine is defective and for which we have received a claim during the Warranty Period, we will, in our sole discretion, either: (a) repair such product (or the defective part) free of charge, or (b) replace such product (or the defective part) free of charge. We reserve the right to provide replacement product or parts thereof with a different color, or which is at least equivalent function, or a subsequent model. Any defective product which is replaced under this warranty becomes the property of Evil. If we cannot determine if the product is defective without the product being returned to us, you are responsible for the cost of shipping and handling to return the defective product to us. If when the damaged product is returned to us, we then determine that the product is defective, we will pay for the shipping to return the repaired or replaced product to you. If we can determine that the product is defective prior to the product being returned to us, we will pay for shipping and handling fees to return the damaged product to us and to return the repaired or replacement product to you.

6. CRASH REPLACEMENT FOR BIKE FRAMES

In the event that a damaged bike frame is determined by us to not be the result of a manufacturing defect, we will make replacement product available to you at a reduced price, subject to product availability and to Evil's sole discretion. Your replacement product will be the same or similar subsequent frame model. You are responsible for the cost of shipping and handling to return the damaged product to us and to ship the replacement product to you. Any damaged product which is replaced under this crash replacement provision becomes the property of Evil.

7. HOW DO YOU OBTAIN WARRANTY SERVICE?

To obtain warranty service, please contact an authorized Evil dealer, or contact Evil Customer Services at **1-877-696-3845** or info@evil-bikes.com during the Warranty Period to obtain a Return Authorization ("RA") number. **No warranty service will be provided without a RA number and proof of purchase.**

8. LIMITATION OF LIABILITY

THE REMEDIES DESCRIBED ABOVE ARE YOUR SOLE AND EXCLUSIVE REMEDIES AND OUR ENTIRE LIABILITY FOR ANY BREACH OF THIS LIMITED WARRANTY. OUR LIABILITY SHALL UNDER NO CIRCUMSTANCES EXCEED THE ACTUAL AMOUNT PAID BY YOU FOR THE DEFECTIVE PRODUCT, NOR SHALL WE UNDER ANY CIRCUMSTANCES BE LIABLE FOR ANY CONSEQUENTIAL, INCIDENTAL, SPECIAL OR PUNITIVE DAMAGES OR LOSSES, WHETHER DIRECT OR INDIRECT.

SOME COUNTRIES, STATES, AND PROVINCES DO NOT ALLOW THE EXCLUSION OR LIMITATION OF INCIDENTAL OR CONSEQUENTIAL DAMAGES, SO THE ABOVE LIMITATION OR EXCLUSION MAY NOT APPLY TO YOU.



THIS LIMITED WARRANTY GIVES YOU SPECIFIC LEGAL RIGHTS AND YOU MAY ALSO HAVE OTHER RIGHTS, WHICH VARY FROM STATE TO STATE, PROVINCE TO PROVINCE, AND COUNTRY TO COUNTRY.

THE LIMITED WARRANTY CAN ALSO BE FOUND ONLINE AT [HTTPS://CA.EVIL-BIKES.COM/PAGES/WARRANTY-POLICY](https://ca.evil-bikes.com/pages/warranty-policy) OR IN THE DOCUMENTATION WE PROVIDE WITH THE PRODUCT.

WE WARRANT THAT DURING THE WARRANTY PERIOD, THE PRODUCTS SPECIFIED BELOW WILL BE FREE FROM DEFECTS IN MATERIALS AND WORKMANSHIP.

EXCEPT FOR THE WARRANTIES SET FORTH IN THIS WARRANTY STATEMENT AND EXCEPT AS REQUIRED BY APPLICABLE LAW, WE MAKE NO WARRANTY OR CONDITION WHATSOEVER WITH RESPECT TO THE PRODUCTS, INCLUDING WITHOUT LIMITATION THE WARRANTIES OR CONDITIONS OF MERCHANTABILITY AND FITNESS FOR A PARTICULAR PURPOSE.

OUR RESPONSIBILITY FOR DEFECTIVE GOODS IS LIMITED TO REPAIR OR REPLACEMENT AS DESCRIBED BELOW IN THIS WARRANTY STATEMENT.

1. WHO MAY USE THIS WARRANTY?

Evil Bikes LLC located at address 700 Harris Avenue, Bellingham, WA 98225 USA ("we" or "us" or "Evil") extend this limited warranty only to the consumer who originally purchased the product directly from us or from our authorized dealer ("you"). It does not extend to any subsequent owner or other transferee of the product.

2. WHAT DOES THIS WARRANTY COVER?

This limited warranty covers defects in materials and workmanship of the Evil products specified below (the "product") for the Warranty Period as defined below.

3. WHAT DOES THIS WARRANTY NOT COVER?

This limited warranty does not cover any damage due to: (a) transportation; (b) improper assembly, storage or use; (c) failure to follow the product instructions or to perform any preventive maintenance; (d) modifications to the product not approved by us; (e) unauthorized repair; (f) normal wear and tear; or (g) external causes such as accidents, crashes, neglect, abuse, or other actions or events beyond our reasonable control; (h) with respect to frame paint, the use or application of adhesives or decals not supplied by us, or the use of chemicals not intended for cleaning painted surfaces.

This limited warranty also does not cover third party components on any Evil bicycle. Third party components may be covered by their respective manufacturer's warranty. For warranty information and service for third party components, please contact their respective manufacturer. Should the manufacturer require that you process such warranty claim through the business from whom you purchased the third party component, please contact either our authorized dealer or Evil customer service, and our authorized dealer or we will be able to provide assistance and facilitation of such warranty claim.

4. WHAT IS THE PERIOD OF COVERAGE?

This limited warranty starts on the date of your purchase and lasts for

- Evil bike frames released from December 2019 (starting with Chamois Hagar), for the **lifetime** of the bike frame;
- Evil bike frames released prior to December 2019, for **3 years**;
- Evil bike frame paint, for **2 years**; and
- Evil bike frame bearings, for **1 year**

(the "Warranty Period").

Except in relation to the lifetime warranty period on Evil bike frames, the Warranty Period is not extended if we repair or replace the product. We may change the availability of this limited warranty at our discretion, but any changes will not be retroactive.

5. WHAT ARE YOUR REMEDIES UNDER THIS WARRANTY?

With respect to any product which we determine is defective and for which we have received a claim during the Warranty Period, we will, in our sole discretion, either: (a) repair such product (or the defective part) free of charge, or (b) replace such product (or the defective part) free of charge. We reserve the right to provide replacement product or parts thereof with a different color, or which is at least equivalent function, or a subsequent model. Any defective product which is replaced under this warranty becomes the property of Evil. If we cannot determine if the product is defective without the product being returned to us, you are responsible for the cost of shipping and handling to return the defective product to us. If when the damaged product is returned to us, we then determine that the product is defective, we will pay for the shipping to return the repaired or replaced product to you. If we can determine that the product is defective prior to the product being returned to us, we will pay for shipping and handling fees to return the damaged product to us and to return the repaired or replacement product to you.

6. CRASH REPLACEMENT FOR BIKE FRAMES

In the event that a damaged bike frame is determined by us to not be the result of a manufacturing defect, we will make replacement product available to you at a reduced price, subject to product availability and to Evil's sole discretion. Your replacement product will be the same or similar subsequent frame model. You are responsible for the cost of shipping and handling to return the damaged product to us and to ship the replacement product to you. Any damaged product which is replaced under this crash replacement provision becomes the property of Evil.

7. HOW DO YOU OBTAIN WARRANTY SERVICE?

To obtain warranty service, please contact an authorized Evil dealer, or contact Evil Customer Services at **1-877-696-3845** or info@evil-bikes.com during the Warranty Period to obtain a Return Authorization ("RA") number. **No warranty service will be provided without a RA number and proof of purchase.**

8. LIMITATION OF LIABILITY

THE REMEDIES DESCRIBED ABOVE ARE YOUR SOLE AND EXCLUSIVE REMEDIES AND OUR ENTIRE LIABILITY FOR ANY BREACH OF THIS LIMITED WARRANTY. OUR LIABILITY SHALL UNDER NO CIRCUMSTANCES EXCEED THE ACTUAL AMOUNT PAID BY YOU FOR THE DEFECTIVE PRODUCT, NOR SHALL WE UNDER ANY CIRCUMSTANCES BE LIABLE FOR ANY CONSEQUENTIAL, INCIDENTAL, SPECIAL OR PUNITIVE DAMAGES OR LOSSES, WHETHER DIRECT OR INDIRECT. SOME JURISDICTIONS MAY NOT ALLOW THE EXCLUSION OR LIMITATION OF INCIDENTAL OR CONSEQUENTIAL DAMAGES, SO THE ABOVE LIMITATION OR EXCLUSION MAY NOT APPLY TO YOU.

QUEBEC PURCHASES

NOTICE CONCERNING THE LEGAL WARRANTY

The Act provides a warranty on the goods you purchase or lease: they must be usable for normal use for a reasonable length of time.

(The merchant is required to read you the above text)

The Consumer Protection Act gives a warranty on all goods you purchase or lease from a merchant.

The goods must be usable:

- for the purpose for which they are ordinarily used (section 37 of the Act) and
- in normal use for a reasonable length of time, which may vary according to the price paid, the terms of the contract and the conditions of use (section 38 of the Act).

For more information on this legal warranty, go to the Office de la protection du consommateur website at www.opc.gouv.qc.ca



CONSUMER GUARANTEES UNDER AUSTRALIAN CONSUMER LAW

Our goods come with guarantees that cannot be excluded under Australian Consumer Law. You are entitled to a replacement or refund for a major failure and compensation for any other reasonably foreseeable loss or damage. You are also entitled to have the goods repaired or replaced if the goods fail to be of acceptable quality and the failure does not amount to a major failure.

LIMITED WARRANTY

THIS LIMITED WARRANTY GIVES YOU SPECIFIC LEGAL RIGHTS AND YOU MAY ALSO HAVE OTHER RIGHTS, WHICH VARY FROM STATE TO STATE AND COUNTRY TO COUNTRY.

THE LIMITED WARRANTY CAN ALSO BE FOUND ONLINE AT [HTTPS://AU.EVIL-BIKES.COM/PAGES/WARRANTY-POLICY](https://au.evil-bikes.com/pages/warranty-policy) OR IN THE DOCUMENTATION WE PROVIDE WITH THE PRODUCT.

WE WARRANT THAT DURING THE WARRANTY PERIOD, THE PRODUCTS SPECIFIED BELOW WILL BE FREE FROM DEFECTS IN MATERIALS AND WORKMANSHIP.

WE LIMIT THE DURATION AND REMEDIES OF ALL IMPLIED WARRANTIES, INCLUDING WITHOUT LIMITATION THE WARRANTIES OF MERCHANTABILITY AND FITNESS FOR A PARTICULAR PURPOSE TO THE DURATION OF THIS EXPRESS LIMITED WARRANTY.

SOME JURISDICTIONS AND STATES DO NOT ALLOW LIMITATIONS ON HOW LONG AN IMPLIED WARRANTY LASTS, SO THE ABOVE LIMITATION MAY NOT APPLY TO YOU.

OUR RESPONSIBILITY FOR DEFECTIVE GOODS IS LIMITED TO REPAIR OR REPLACEMENT AS DESCRIBED BELOW IN THIS WARRANTY STATEMENT.

1. WHO MAY USE THIS WARRANTY?

Evil Bikes LLC located at address 700 Harris Avenue, Bellingham, WA 98225 USA ("we" or "us" or "Evil") extend this limited warranty only to the consumer who originally purchased the product directly from us or from our authorized dealer ("you"). It does not extend to any subsequent owner or other transferee of the product.

2. WHAT DOES THIS WARRANTY COVER?

This limited warranty covers defects in materials and workmanship of the Evil products specified below (the "product") for the Warranty Period as defined below.

3. WHAT DOES THIS WARRANTY NOT COVER?

This limited warranty does not cover any damage due to: (a) transportation; (b) improper assembly, storage or use; (c) failure to follow the product instructions or to perform any preventive maintenance; (d) modifications to the product not approved by us; (e) unauthorized repair; (f) normal wear and tear; or (g) external causes such as accidents, crashes, neglect, abuse, or other actions or events beyond our reasonable control; (h) with respect to frame paint, the use or application of adhesives or decals not supplied by us, or the use of chemicals not intended for cleaning painted surfaces.

This limited warranty also does not cover third party components on any Evil bicycle. Third party components may be covered by their respective manufacturer's warranty. For warranty information and service for third party components, please contact their respective manufacturer. Should the manufacturer require that you process such warranty claim through the business from whom you purchased the third party component, please contact either our authorized dealer or Evil customer service, and our authorized dealer or we will be able to provide assistance and facilitation of such warranty claim.

4. WHAT IS THE PERIOD OF COVERAGE?

This limited warranty starts on the date of your purchase and lasts for

- a. **Evil bike frames released from December 2019 (starting with Chamois Hagar),** for the **lifetime** of the bike frame;
- b. **Evil bike frames released prior to December 2019, for 3 years;**
- c. **Evil bike frame paint, for 2 years;** and
- d. **Evil bike frame bearings, for 1 year**

(the "Warranty Period").

Except in relation to the lifetime warranty period on Evil bike frames, the Warranty Period is not extended if we repair or replace the product. We may change the availability of this limited warranty at our discretion, but any changes will not be retroactive.

5. WHAT ARE YOUR REMEDIES UNDER THIS WARRANTY?

With respect to any product which we determine is defective and for which we have received a claim during the Warranty Period, we will, in our sole discretion, either: (a) repair such product (or the defective part) free of charge, or (b) replace such product (or the defective part) free of charge. We reserve the right to provide replacement product or parts thereof with a different color, or which is at least equivalent function, or a subsequent model. Any defective product which is replaced under this warranty becomes the property of Evil. If we cannot determine if the product is defective without the product being returned to us, you are responsible for the cost of shipping and handling to return the defective product to us. If when the damaged product is returned to us, we then determine that the product is defective, we will pay for the shipping to return the repaired or replaced product to you. If we can determine that the product is defective prior to the product being returned to us, we will pay for shipping and handling fees to return the damaged product to us and to return the repaired or replacement product to you.

6. CRASH REPLACEMENT FOR BIKE FRAMES

In the event that a damaged bike frame is determined by us to not be the result of a manufacturing defect, we will make replacement product available to you at a reduced price, subject to product availability and to Evil's sole discretion. Your replacement product will be the same or similar subsequent frame model. You are responsible for the cost of shipping and handling to return the damaged product to us and to ship the replacement product to you. Any damaged product which is replaced under this crash replacement provision becomes the property of Evil.

7. HOW DO YOU OBTAIN WARRANTY SERVICE?

To obtain warranty service, please contact an authorized Evil dealer, or contact Evil Customer Services at **1-877-696-3845** or info@evil-bikes.com during the Warranty Period to obtain a Return Authorization ("RA") number. **No warranty service will be provided without a RA number and proof of purchase.**

8. LIMITATION OF LIABILITY

THE WARRANTIES AND REMEDIES DESCRIBED ABOVE ARE YOUR SOLE AND EXCLUSIVE REMEDIES AND OUR ENTIRE LIABILITY FOR ANY BREACH OF THIS LIMITED WARRANTY, EXCEPT TO THE EXTENT TO WHICH YOU MAY BE ENTITLED UNDER THE AUSTRALIAN CONSUMER LAW AND ARE NOT INTENDED TO EXCLUDE, RESTRICT OR MODIFY ANY SUCH RIGHTS OR REMEDIES. OUR LIABILITY SHALL UNDER NO CIRCUMSTANCES EXCEED THE ACTUAL AMOUNT PAID BY YOU FOR THE DEFECTIVE PRODUCT, NOR SHALL WE UNDER ANY CIRCUMSTANCES BE LIABLE FOR ANY CONSEQUENTIAL, INCIDENTAL, SPECIAL OR PUNITIVE DAMAGES OR LOSSES, WHETHER DIRECT OR INDIRECT, EXCEPT AS YOU MAY BE ENTITLED UNDER THE AUSTRALIAN CONSUMER LAW.

SOME COUNTRIES AND STATES DO NOT ALLOW THE EXCLUSION OR LIMITATION OF INCIDENTAL OR CONSEQUENTIAL DAMAGES, SO THE ABOVE LIMITATION OR EXCLUSION MAY NOT APPLY TO YOU.



EVIL BIKES LLC

700 Harris Ave.
Bellingham, WA
98225

Phone: 877.696.EVIL
info@evil-bikes.com

EVIL BIKES GLOBAL, S.L.

Calle Bruselas 6-A
28232 Las Rozas de Madrid, Spain
CIF: ESB86483922

Phone: +34.902.46.3845
europe@evil-bikes.com